

STREET IMPROVEMENTS FOR SANDWEDGE CIRCLE & INCIDENTAL STORM WATER SEWER

to serve

AUBURN HILLS 11TH ADDITION

CITY OF WICHITA, KANSAS

Michael E. Lindebak, P.E. City Engineer

SANDWEDGE from the westerly line of Lot 4, Block B east to and including the cul-de-sac

Project Number

472-83403

O.C.A. Number

765692

DRAINAGE
BOOKED
10-16-02
MCG
C-230

Sheet Index

Title Sheet	1
29' Pavement Detail	2
Sign Detail	3
Soil Erosion BMPS	4-5
Sandwedge Cir.	6-7
Line 1	8
Easement Grading Plan	9
Headwall Detail	10
Single Type 1-A Inlet Detail	11
Shallow Manhole Detail	12
Ring & Cover Detail	13
Earthwork Cross Sections	14-16
Copy of Plat	17

GENERAL NOTES:

1. Contractor will be required to provide notice to utility companies a minimum of twenty-four (24) hours prior to any excavation, as follows:

Kansas One-Call	687-2470
Cox Communications	262-0661
Kansas Gas Service	383-8600
K.G.E.	383-8600
Peoples Gas Company	1-800-303-0752
Southwestern Bell Telephone Company	1-800-344-7233
City of Wichita Water Department	268-4908
City of Wichita Traffic Engineering	268-4446

The Contractor must notify the following in case of an emergency:

2. Utility service lines, poles, valve boxes, meters, and etceteras are to be adjusted as necessary by others prior to construction unless the plans specifically call for their adjustment by the Contractor or unless the plans specifically identify a utility to be adjusted by its owner during construction. Existing utilities and their location, as shown on the plans, represent the best information obtainable for design. The contractor will be required to work around existing utilities within the right-of-way which do not conflict with proposed construction.

3. Trees and shrubs in public right-of-way which are in direct conflict with proposed new construction shall be removed by the Contractor with the Engineer's approval. Trees and shrubs which are not in direct conflict with proposed new construction shall be saved and protected from damage.

4. All areas disturbed by construction shall be seeded at 300 lbs./acre with Rye Grass immediately following construction in that area. Contractor shall prepare ground per City specifications.

5. Rubble from the removal of miscellaneous structures and excess excavation which is to be wasted shall be disposed of on sites to be provided by the Contractor. These sites shall be approved by the Engineer as to suitability, appearance and site location. Locations that, in the opinion of the Engineer, will leave an unsightly appearance will not be approved. All disposal sites must be approved by the Kansas Department of Health and Environment. Material either stockpiled or disposed of in a flood plain would require a Kansas State Board of Agriculture permit. Any material dumped in waters of the United States or wetlands is subject to U.S. Corps. of Engineers permitting regulations. Any material buried or stockpiled beyond approved construction limits would require additional archaeological investigations unless buried in a previously approved borrow location.

6. The Contractor shall be responsible for preserving property irons. The Contractor will be required to reestablish any property irons which are damaged or destroyed by his construction operations. Such irons shall be reestablished by a licensed land surveyor in accordance with state law.

7. A saw cut of at least one-half the depth of existing surface courses of one-fourth the depth of the existing total pavement thickness shall be provided at locations where proposed construction abuts as existing surface course or pavement for which partial removal of that surface or pavement is required. Sawed joint to facilitate removal within three (3) feet of existing joints will not be permitted and for such instances the limits of removal shall extend to the existing joint. Such saw cuts will not be paid for directly and this cost shall be considered as subsidiary to the removal of the surface or pavement.

Benchmark

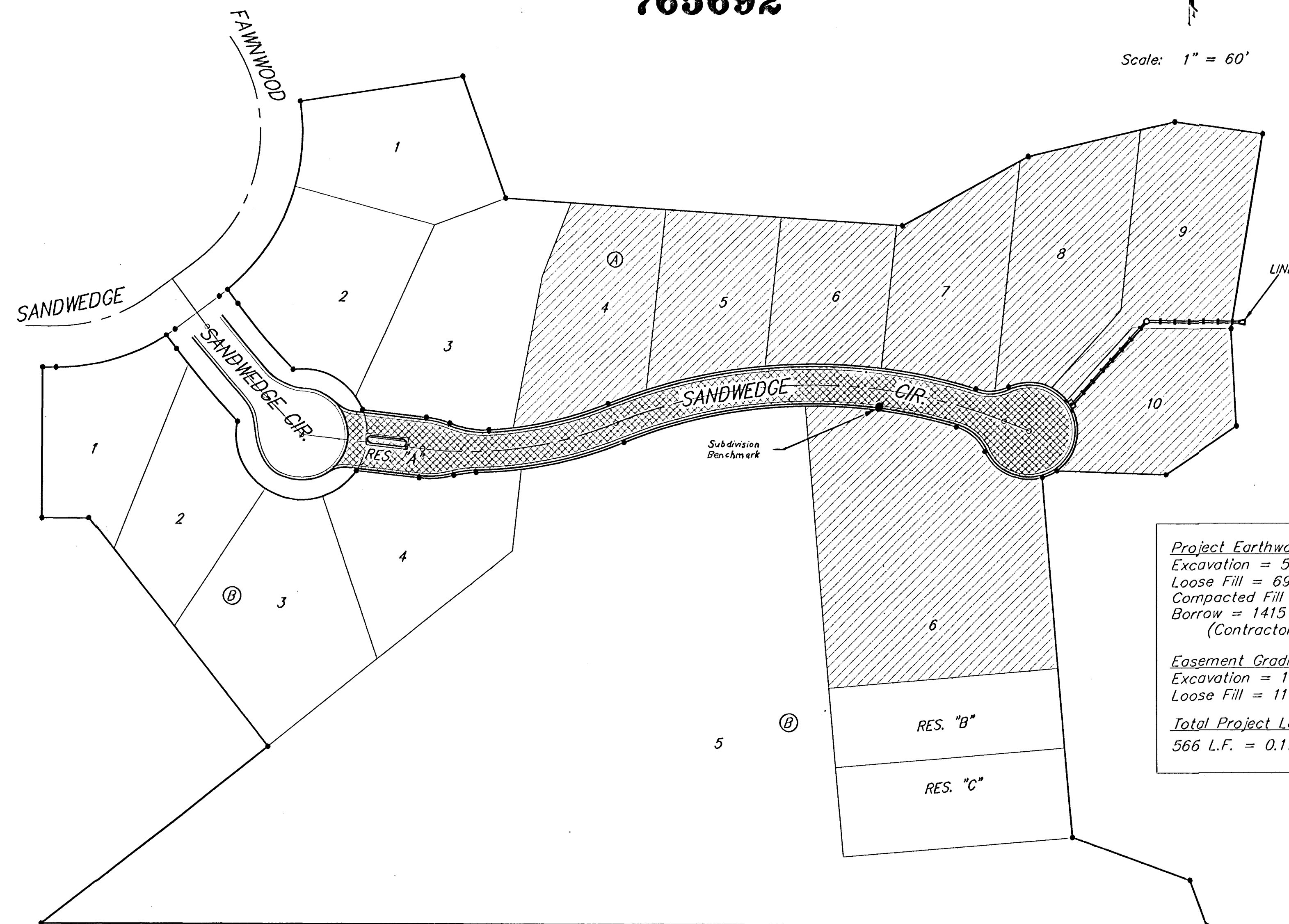
R.R. Spike in N. Side of Power Pole
780' E. of C 151st. W. & 60' N.
of Section Line on Kellogg
Elev. = 202.07 (City Datum)

R.R. Spike in Power Pole 493' N. &
30' E. of Section Corner @ 151st. W.
& Kellogg, adjacent to S.S. Lift Station.
Elev. = 207.28 (City Datum)

Top of 1" Iron 12" Deep, W1/4 Cor.,
Sec. 26, Twp. 27-S, R-2-W.
Elev. = 209.13 (City Datum)

"□" cut on Top of Curb Adjacent to
Common Lot Line of Lots 16 & 17,
Block B, Auburn Hills 5th Addition
Elev. = 202.65 (City Datum)

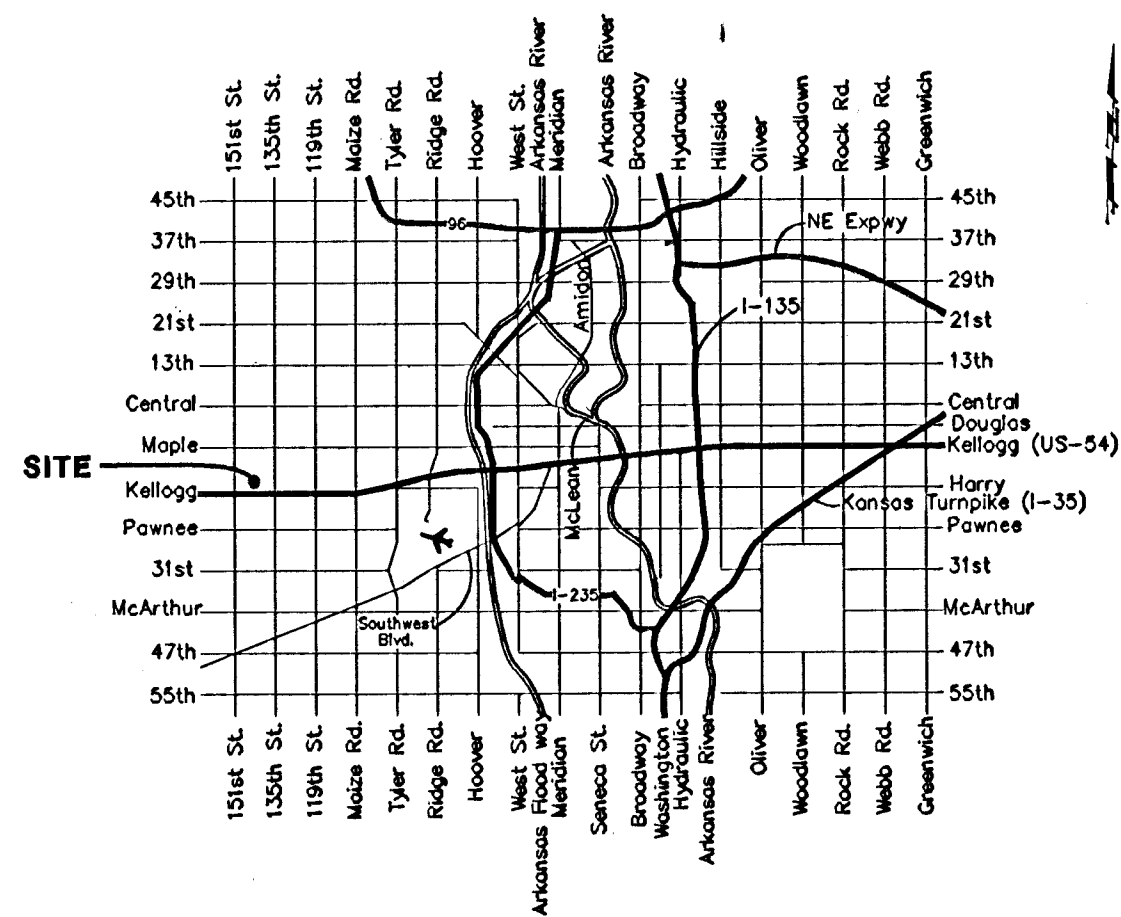
Scale: 1" = 60'



Project Earthwork Totals
Excavation = 528 C.Y.
Loose Fill = 694 C.Y.
Compacted Fill = 953 C.Y.
Borrow = 1415 C.Y.
(Contractor Furnished)

Easement Grading Totals
Excavation = 17 C.Y.
Loose Fill = 11 C.Y.

Total Project Length
566 L.F. = 0.11 Miles



Vicinity Map

Benefit District:

Proposed Streets:

