

# Parking Lot At Park Maintenance Facilities

## 1245 S. McLean

Project Number

472-84197

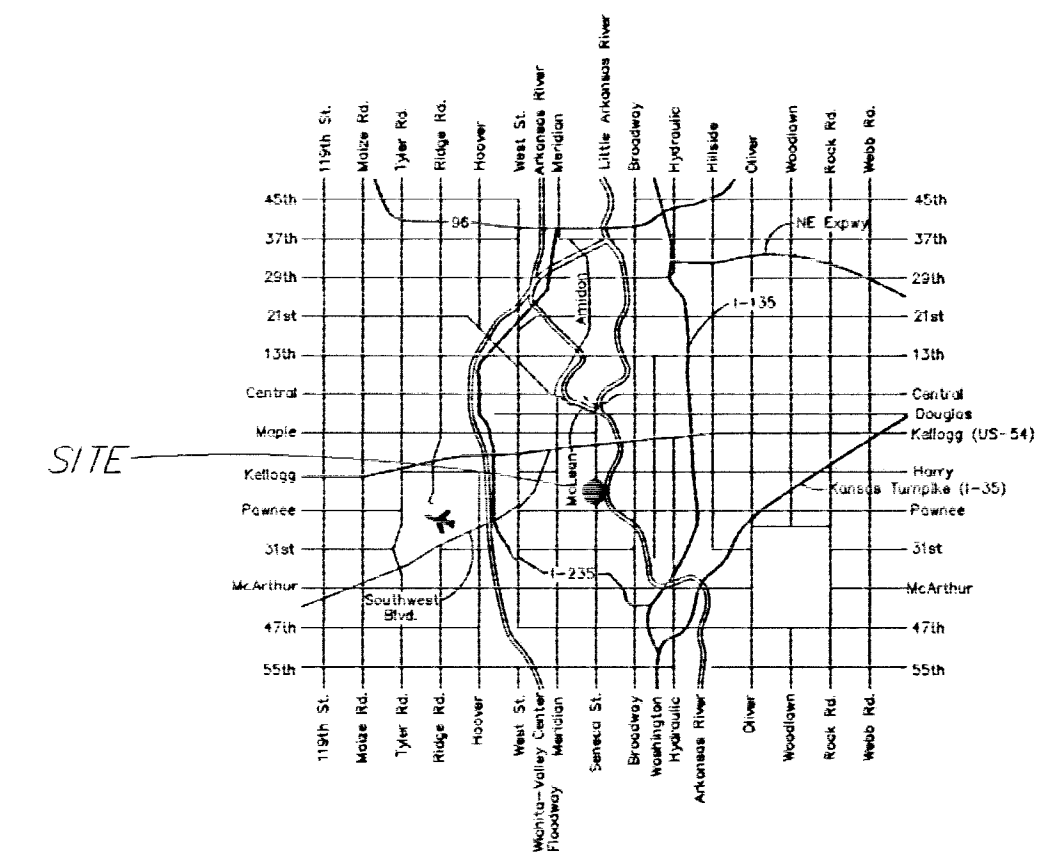
OCA No. 785048

CITY OF WICHITA, KANSAS

Jim Armour, P.E., City Engineer

Index of Sheets:

1. Title Sheet
2. Site Plan
3. Grading Plan
4. Erosion Plan
5. Joint Plan
6. SWS Plan and Profile
7. Inlet Details
8. Erosion Details
9. Erosion Details
10. Joint Details



City of Wichita

GENERAL NOTES

1. Contractor will be required to provide notice to utility companies a minimum of twenty-four (24) hours prior to any excavation, as follows:

Kansas One-Call 687-2470

The Contractor must notify the following in case of an emergency:

- |                                     |                |
|-------------------------------------|----------------|
| Cox Communications                  | 262-4270       |
| or                                  | 263-2061       |
| Westar Energy/                      |                |
| Kansas Gas & Electric Company       | 1-888-482-4950 |
| Southwestern Bell Telephone Company | 1-571-2611     |
| City of Wichita Water Department    | 268-4908       |
| City of Wichita Sewer Department    | 268-4071       |
| Aquila Natural Gas                  | 942-8811       |
| or                                  | 1-800-303-0357 |

2. Exist. utilities and their locations, as shown on the plans, represent the best information obtainable for design. Location information has been obtained from the various utility companies and is either from company record drawings or company-provided field locations. The Contractor will be required to work around existing utilities which do not conflict with proposed construction.

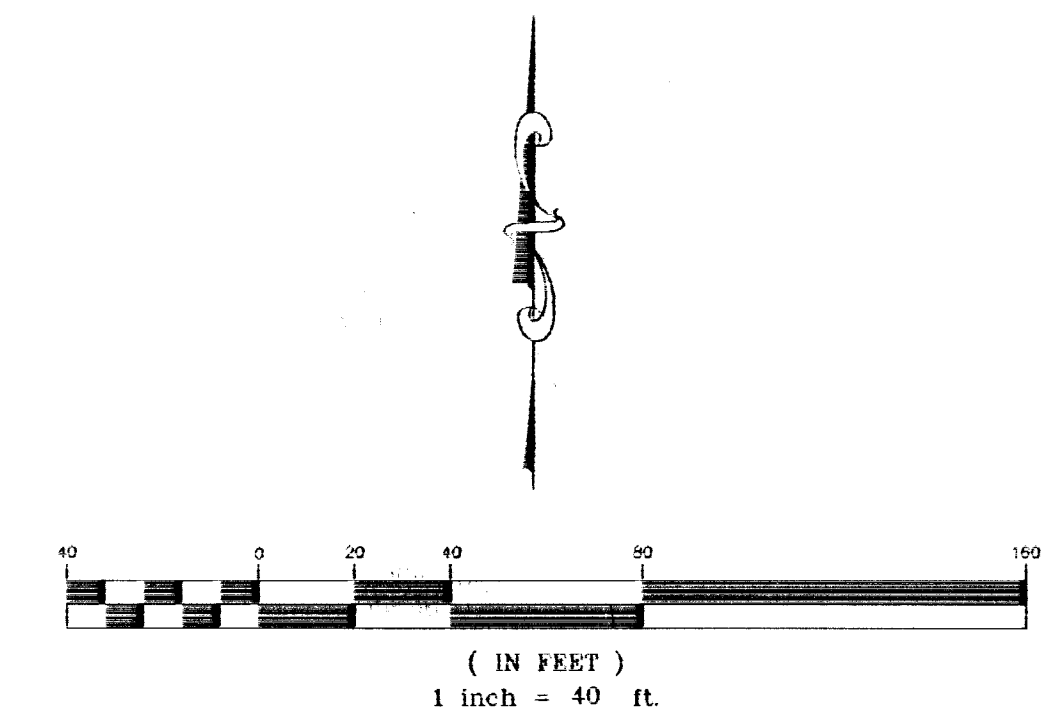
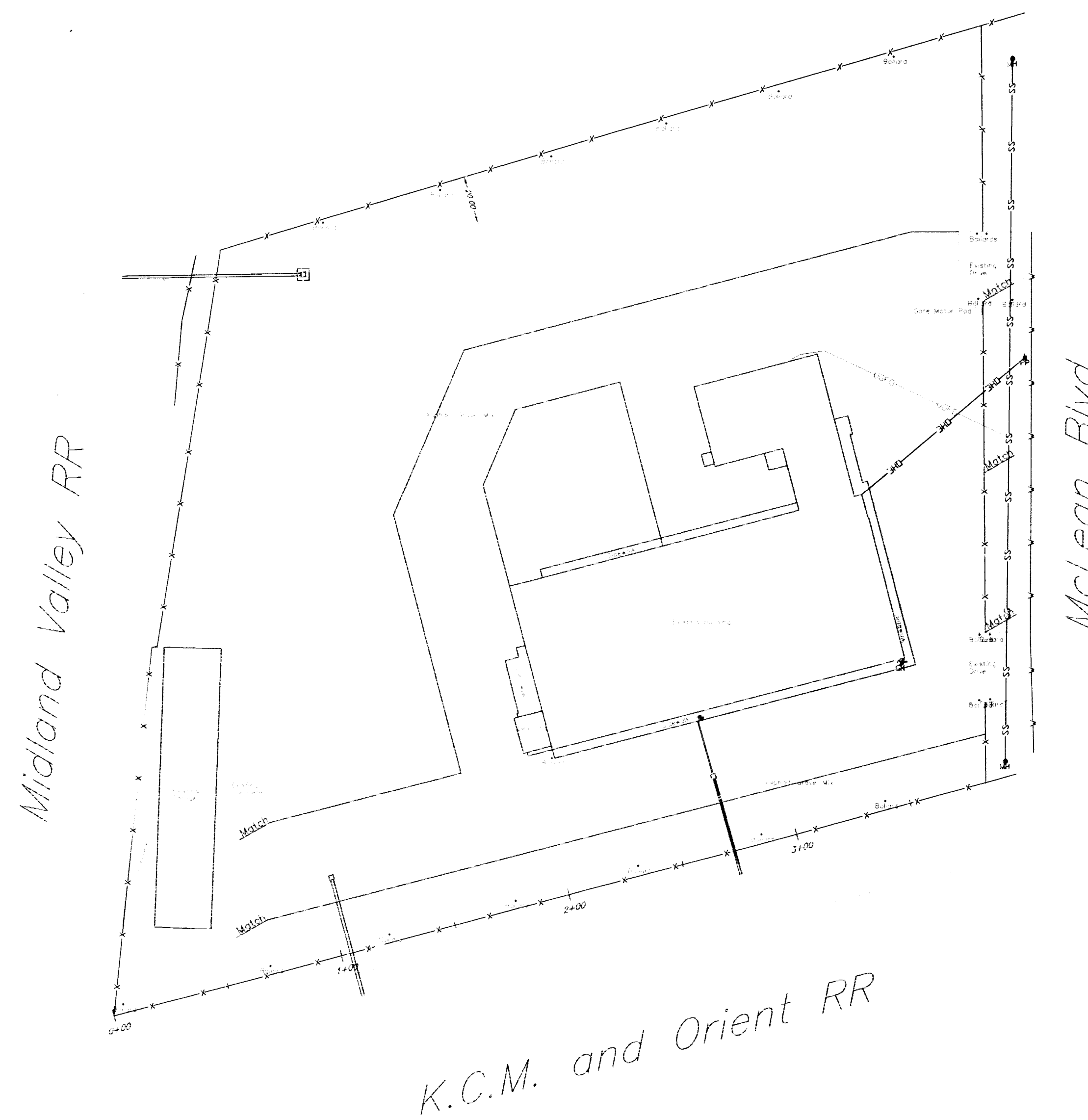
3. The Contractor to verify utility locations prior to construction of this project.

4. Utility service and installation shall be coordinated with the respective utility owners. Contacts are:

- |                    |               |          |
|--------------------|---------------|----------|
| Kansas Gas Service | Charlene Pint | 832-3121 |
| Westar Energy      | Miles Capps   | 261-6251 |
| Aquila Networks    | Calvin Briggs | 942-8811 |
| Wichita Water      | Paul Bryant   | 268-4555 |
| Southwestern Bell  | Jim Toben     | 268-2759 |
| Cox Communications | Brian Ring    | 262-4270 |

5. All lawn/turf areas disturbed by construction of proposed improvements shall be restored with seed. All seeding work shall be in accordance with the City of Wichita standard specifications and the City of Wichita administrative regulation No. AR78 which governs cleanup and replacement following construction. All costs for this work shall be subsidiary to the lump sum price bid for "Site Restoration."

6. Traffic affected by the construction of this project shall be handled in accordance with the latest edition of the Manual on Uniform Traffic Control Devices.



Benchmark:  
SW Corner of Bridge  
Lincoln and Arkansas River.  
NW Corner Gate Motor Pad  
North Gate.  
Elev. 108.90



516 S. Market,  
Wichita, KS 67202 316/264-0242

April 2005