

GENERAL NOTES

- THE CONTRACTOR SHALL COMPLY WITH ALL APPLICABLE SAFETY REGULATIONS. ALL CONSTRUCTION SHALL BE COMPLETED FOLLOWING CURRENT CITY STANDARD SPECIFICATIONS AND SPECIAL PROVISIONS.
- CONTRACTOR WILL BE REQUIRED TO PROVIDE NOTICE TO UTILITY COMPANIES A MINIMUM OF SEVENTY-TWO (72) HOURS PRIOR TO ANY EXCAVATION, AS FOLLOWS:
KANSAS ONE-CALL 687-2470
THE CONTRACTOR MUST NOTIFY THE FOLLOWING IN CASE OF AN EMERGENCY:
AT&T 1-800-246-8464
BLACK HILLS ENERGY (GAS) 1-800-694-8989
CITY OF WICHITA WATER & SEWER 1-316-219-8921
CITY OF WICHITA STORMWATER 1-316-268-4090
CITY OF WICHITA TRAFFIC 1-316-268-4034
COX COMMUNICATIONS 1-888-249-3530
KANSAS GAS SERVICE 1-888-482-4950
WESTAR ENERGY 1-800-544-4857
- UTILITY SERVICE LINES, POLES, ETC. ARE TO BE ADJUSTED AS NECESSARY BY OTHERS PRIOR TO CONSTRUCTION UNLESS THE PLANS SPECIFICALLY CALL FOR THEIR ADJUSTMENT BY THE CONTRACTOR OR UNLESS THE PLANS SPECIFICALLY IDENTIFY A UTILITY TO BE ADJUSTED BY ITS OWNER DURING CONSTRUCTION. EXISTING UTILITIES AND THEIR LOCATION, AS SHOWN ON THE PLANS, REPRESENT THE BEST INFORMATION OBTAINABLE FOR DESIGN. THE CONTRACTOR WILL BE REQUIRED TO WORK AROUND EXISTING UTILITIES WITHIN THE RIGHT-OF-WAY WHICH DO NOT CONFLICT WITH PROPOSED CONSTRUCTION.
- RUBBLE FROM THE REMOVAL OF MISCELLANEOUS STRUCTURES AND EXCESS EXCAVATION WHICH IS TO BE WASTED SHALL BE DISPOSED OF ON SITES TO BE PROVIDED BY THE CONTRACTOR. THESE SITES SHALL BE APPROVED BY THE ENGINEER AS TO SUITABILITY, APPEARANCE AND SITE LOCATION. LOCATIONS, IN THE OPINION OF THE ENGINEER, THAT WILL LEAVE AN UNSIGHTLY APPEARANCE WILL NOT BE APPROVED. ALL DISPOSAL SITES MUST BE APPROVED BY THE KANSAS DEPARTMENT OF HEALTH AND ENVIRONMENT. MATERIAL EITHER STOCKPILED OR DISPOSED OF IN A FLOOD PLAIN WILL REQUIRE A KANSAS STATE BOARD OF AGRICULTURE PERMIT. ANY MATERIAL DUMPED IN WATERS OF THE UNITED STATES OR WETLANDS IS SUBJECT TO U.S. CORPS OF ENGINEERS PERMITTING REGULATIONS. ANY MATERIAL BURIED OR STOCKPILED BEYOND APPROVED CONSTRUCTION LIMITS WILL REQUIRE ADDITIONAL ARCHAEOLOGICAL INVESTIGATIONS UNLESS BURIED IN A PREVIOUSLY APPROVED BORROW LOCATION.
- TREES AND SHRUBS IN PUBLIC RIGHT-OF-WAY WHICH ARE IN DIRECT CONFLICT WITH PROPOSED NEW CONSTRUCTION SHALL BE REMOVED BY THE CONTRACTOR WITH THE CITY ENGINEER'S APPROVAL. TREES AND SHRUBS WHICH ARE NOT IN DIRECT CONFLICT WITH PROPOSED NEW CONSTRUCTION SHALL BE SAVED AND PROTECTED FROM DAMAGE.
- THE CONTRACTOR SHALL GIVE ALL PROPERTY OWNERS AND/OR TENANTS OF DEVELOPED PROPERTY ABOUTING THE CONSTRUCTION OF THIS PROJECT A MINIMUM OF TEN (10) DAYS NOTICE PRIOR TO START OF CONSTRUCTION.
- THE CONTRACTOR SHALL BE RESPONSIBLE FOR PRESERVING PROPERTY IRONS. THE CONTRACTOR WILL BE REQUIRED TO RE-ESTABLISH ANY PROPERTY IRONS WHICH ARE DAMAGED OR DESTROYED BY HIS CONSTRUCTION OPERATIONS. SUCH IRONS SHALL BE RE-ESTABLISHED BY A LICENSED LAND SURVEYOR IN ACCORDANCE WITH STATE LAWS.
- THE ENGINEERING DIVISION SHALL FIELD LOCATE WATER VALVES ONE TIME DURING CONSTRUCTION WHEN REQUESTED BY THE CONTRACTOR. IT SHALL BE THE CONTRACTOR'S RESPONSIBILITY TO PRESERVE SUCH FIELD LOCATIONS DURING THE CONSTRUCTION PROCESS. WATER VALVES, VALVE BOXES OR FIRE HYDRANTS DAMAGED DURING CONSTRUCTION SHALL BE REPAIRED BY CONTRACTOR AT HIS OWN EXPENSE. VALVE BOXES AND WATER METERS WITHIN THE PROJECT LIMITS SHALL BE ADJUSTED TO MATCH FIELD GRADES BY THE CONTRACTOR.
- IF TRAFFIC WILL BE IMPACTED BY CONSTRUCTION, A TRAFFIC CONTROL PLAN MUST BE SUBMITTED AND APPROVED BY THE CITY TRAFFIC ENGINEER, MIKE ARMOUR AT traffic@wichita.gov. BEFORE CONSTRUCTION CAN BEGIN. THE CONTRACTOR SHALL BE RESPONSIBLE FOR ALL TRAFFIC CONTROL MEASURES TO FACILITATE CONSTRUCTION. ALL CONSTRUCTION ZONE MARKINGS AND SIGNAGE SHALL CONFORM TO THE LATEST VERSION OF THE MANUAL ON UNIFORM TRAFFIC CONTROL DEVICES (MUTCD) AS PUBLISHED BY THE US DEPT. OF TRANSPORTATION, FEDERAL HIGHWAY ADMINISTRATION. ALL COSTS ASSOCIATED WITH CONSTRUCTION MARKINGS AND SIGNAGE SHALL BE THE CONTRACTOR'S RESPONSIBILITY.
- ALL AREAS DISTURBED DURING CONSTRUCTION THAT WILL NOT BE UNDER PROPOSED PAVEMENT SHALL BE SEEDED AND MULCHED. COST SHALL BE CONSIDERED SUBSIDIARY TO PROJECT SEEDING.
- CONTRACTOR SHALL LIMIT THE EXTENT OF TRENCH OPEN OVERNIGHT AND WEEKENDS TO LESS THAN 50 FEET.
- EXISTING UTILITIES AND THEIR LOCATION, AS SHOWN ON THE PLANS REPRESENT THE BEST INFORMATION OBTAINABLE FOR DESIGN. LOCATION INFORMATION HAS BEEN OBTAINED FROM THE VARIOUS COMPANIES AND IS EITHER FROM COMPANY UTILITY DRAWINGS OR COMPANY PROVIDED FIELD LOCATIONS. THE PLAN LOCATIONS SHOWN ARE NOT GUARANTEED. ADDITIONAL EXISTING UTILITIES MAY ALSO BE ENCOUNTERED.
- A PORTION OF EXCESS EXCAVATED MATERIAL SHALL BE MOUNDED AROUND MANHOLES WHICH EXTEND MORE THAN ONE (1) FOOT ABOVE THE EXISTING GROUND. SUCH MOUND SHALL BE CONSTRUCTED WITH NEW DEVELOPMENT A SIX (6) FOOT DIAMETER FLAT TOP WITH 4 TO 1 SIDE SLOPES DOWN TO THE ORIGINAL GROUND. THE ELEVATION OF THE FLAT TOP OF THE MOUND SHALL BE 0.4 FOOT BELOW THE TOP OF THE MANHOLE.
- CONTRACTOR SHALL PROVIDE POSITIVE DRAINAGE AWAY FROM ALL MANHOLE COVERS.
- ALL STUBS AND PLUGGED PIPES SHALL BE LOCATED WITH GREEN PLASTIC TAPE IN THE SAME MANNER AS RISERS.
- CONNECTING TO EXISTING MANHOLES:
PRIOR TO LAYING SEWER LINES USING EXISTING STUBS IN EXISTING MANHOLES, THE CONTRACTOR SHALL EXPOSE AND VERIFY THE ELEVATION, GRADE AND ALIGNMENT OF EXISTING STUBS AND NOTIFY THE ENGINEER OF ANY DEVIATION FROM THE PLANS. WHERE CONNECTION TO AN EXISTING MANHOLE THAT DOES NOT HAVE AN EXISTING STUB OR THE STUB IS UNUSABLE DUE TO ELEVATION GRADE OR ALIGNMENT, THE CONTRACTOR SHALL BORE CUT INTO EXISTING MANHOLE WALL TO MAKE CONNECTION USING APPROVED WATER STOP GASKET, AND RESHAPE THE EXISTING MANHOLE INVERT TO PROVIDE SMOOTH FLOW. THE COST TO CONNECTING TO EXISTING MANHOLES IS INCIDENTAL TO THE PROJECT.
- THE CONTRACTOR SHALL PREVENT ANY CONSTRUCTION DEBRIS FROM ENTERING THE EXISTING SANITARY SEWER DURING CONSTRUCTION.
- THE CONTRACTOR SHALL BE RESPONSIBLE FOR MAINTAINING CONTINUOUS FLOW OF SEWAGE THROUGH CONSTRUCTION. CONTRACTOR'S PROPOSED METHOD FOR MAINTAINING SEWAGE FLOW SHALL BE SUBMITTED AND APPROVED BY THE SEWER MAINTENANCE DIVISION (316-268-4073) PRIOR TO STARTING AND BY-PASSING OF SEWAGE FLOWS.
- ALL TRAFFIC CONTROL DEVICES IN THE WORK ZONE (INCLUDING MARKINGS AND SIGNS) AND THEIR INSTALLATION AND MAINTENANCE SHALL COMPLY WITH THE LATEST EDITION OF THE MANUAL ON UNIFORM TRAFFIC CONTROL DEVICES (MUTCD). ALL TRAFFIC CONTROL DEVICES IN THE TRAVELED WAY OR CLEAR ZONE SHALL BE CRASHWORTHY (NCHRP REPORT 350 OR MASH COMPLIANT).
http://safety.fhwa.dot.gov/roadwaydept/policy/guide/road_hardware/wzd
- ALL CONSTRUCTION EQUIPMENT, INCLUDING VEHICLES, MATERIALS, AND DEBRIS, SHALL BE STORED OUTSIDE OF THE CLEAR ZONE. WHERE THIS CANNOT BE ACHIEVED THE CONTRACTOR SHALL PLACE APPROPRIATE SIGNS, ABJECT IDENTIFIERS, AND/OR BARRICADES IN COMPLIANCE WITH MUTCD.
- EXCEPT WHEN REQUIRED FOR SAFETY, TRAFFIC CONTROL SHALL NOT BLOCK ANY LANES OR SIDEWALKS WHEN WORK IS NOT BEING PERFORMED.
- FOLLOW THE LINK BELOW FOR DETAILS ON SPECIFIC CITY OF WICHITA STANDARD DETAILS:
<http://www.wichita.gov/PWU/Regulations.aspx>
- DEVELOPER FOR THIS PROJECT IS:
PERFECTION SIGNATURE PROPERTIES, LLC
11828 W. CENTRAL, SUITE 124
WICHITA, KANSAS, 67212
SCOTT LEHNER/JASON RONK
316-729-1900

SANITARY SEWER TO SERVE

AUBURN LAKES ADDITION

LATERAL 72, COWSKIN INTERCEPTOR

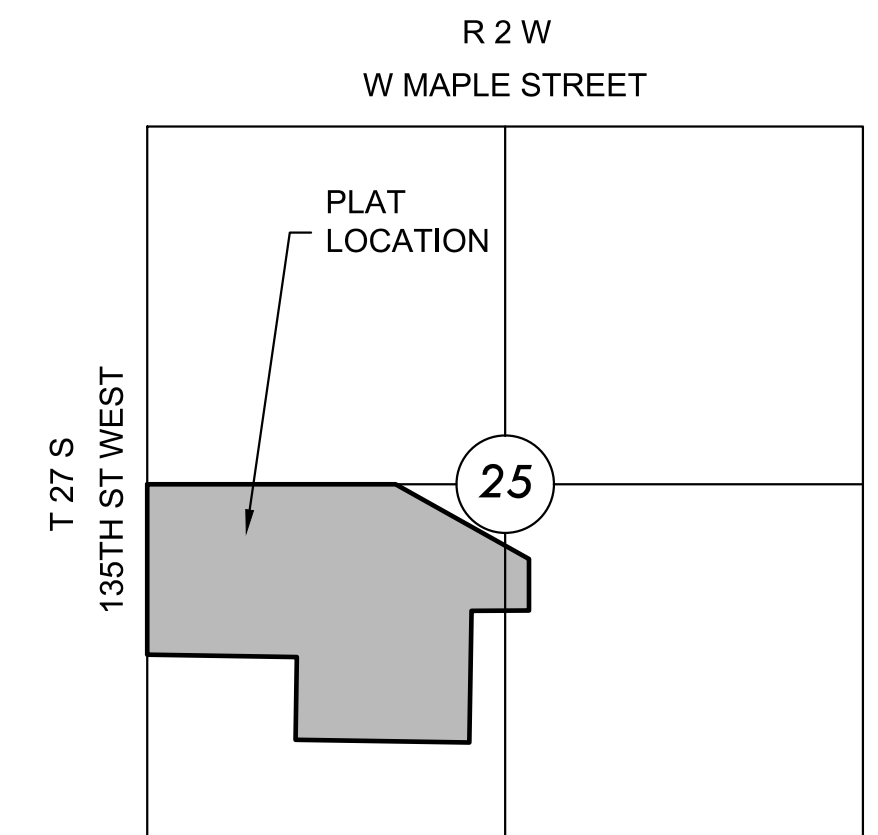
PROJECT NO. 468-2020-033942

THE CITY OF WICHITA, KANSAS
GARY JANZEN, P.E. - CITY ENGINEER

ORG CODE 47263521

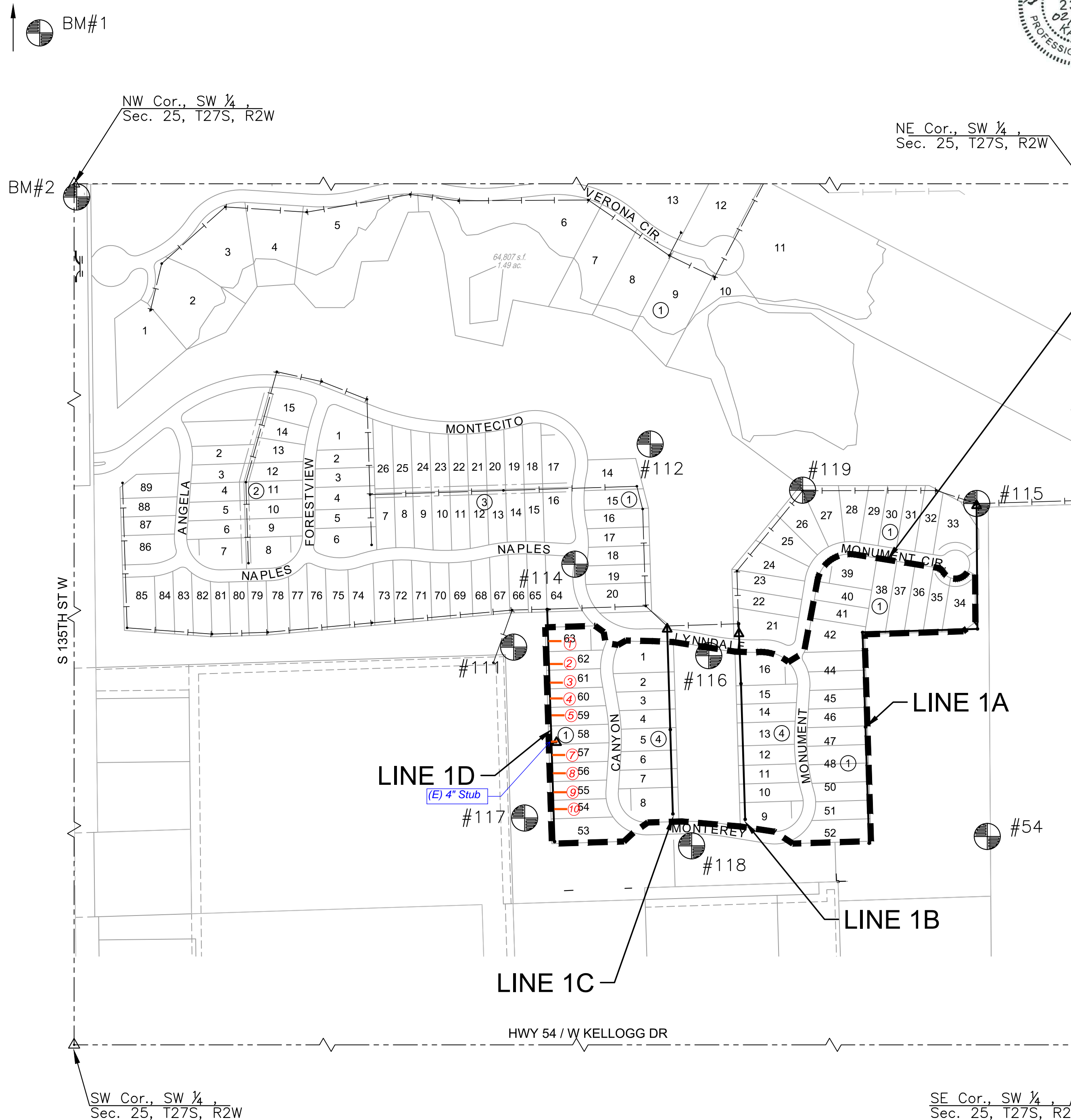
MUNIS NO. E1015

Apex Excavation - Contractor
K. Kerns - City of Wichita, Field Project Engineer
L. Schaller - MKEC, Inspector
As-built
Stub & Risers
Release Date (for connection purposes only): 8/27/2021
pdf: apr 12/7/2021



VICINITY MAP

No Scale



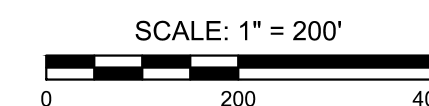
BENEFIT DISTRICT BOUNDARY

INDEX TO DRAWINGS

| SHEET NO. | DESCRIPTION |
|-----------|-------------|
| 01 | TITLE SHEET |
| 02-04 | DETAILS |
| 05-06 | LINE 1A |
| 07 | LINE 1B |
| 08 | LINE 1C |
| 09 | LINE 1D |
| 10 | BUBBLE MAP |
| 11-15 | BMP SHEETS |
| 16-17 | FINAL PLAT |

BENCHMARKS

| | |
|------|--|
| BM#1 | SQUARE CUT ON EAST NOSE OF CENTER ISLAND, 50 FEET WEST OF 135TH STREET WEST AND ONEWOOD STREET INTERSECTION. ELEV.=1350.35 NAVD88 |
| BM#2 | SQUARE CUT ON NORTHEAST CORNER CURB INLET, EAST SIDE OF 135TH STREET WEST, 33 FEET SOUTH OF NW 1/4, SEC. 25, T27S, R2W OF THE 6TH P.M. ELEV.=1346.29 NAVD88 |



SURVEY CONTROL (PHASE 3)

DATUM:
THE HORIZONTAL DATUM IS BASED ON THE KANSAS COORDINATE SYSTEM OF 1983(2011), SOUTH ZONE. COORDINATES SHOWN HAVE BEEN MODIFIED TO THE GROUND USING A COMBINED ADJUSTMENT FACTOR OF 1.0001200144. STATE PLANE COORDINATES CAN BE CALCULATED BY MULTIPLYING THE SHOWN VALUES BY 0.99988.

ALL ELEVATIONS SHOWN ARE BASED ON THE NAVD 88 VERTICAL DATUM.

| BENCHMARK/CONTROL POINTS (GND): | NORTHING | EASTING | ELEVATION | DESCRIPTION |
|---------------------------------|-------------|-------------|-----------|--|
| BM/CP# | 1678264.862 | 1604718.113 | 1319.680 | 5/8" BY 24 REBAR WITH 2" ALUM MKEC CP CAP |
| 111 | 1678753.722 | 1603495.058 | 1350.000 | 5/8" BY 36" REBAR WITH 2" ALUM MKEC CP CAP |
| 112 | 1679278.218 | 1603847.480 | 1331.140 | +CUT/SQ CUT @ SW CORNER CONCRETE WEIR. |
| 114 | 1678968.221 | 1603652.801 | 1328.525 | SQUARE CUT TC IN-FRONT OF FH @ NE CORNER LOT 64 BLK 1 |
| 115 | 1679125.545 | 1604690.460 | 1319.945 | VCUT N EDGE OF CONC AROUND MHSS NE CORNER OF LOT 33 BLK 1 |
| 116 | 1678731.390 | 1603998.647 | 1324.190 | +CUT E. EDGE OF RCB HDWL BETWEEN PONDS ON SOUTH SIDE OF LYNNDALE |
| 117 | 1678312.330 | 1603523.303 | 1350.400 | 3/4" BY 36" REBAR WITH 2" ALUM MKEC CP CAP |
| 118 | 1678240.632 | 1603954.475 | 1336.660 | 3/4" BY 36" REBAR WITH 2" ALUM MKEC CP CAP |
| 119 | 1679159.064 | 1604241.231 | 1328.025 | VCUT N EDGE OF CONC AROUND MHSS NW CORNER LOT 27 BLK1 |

NOTE:
ALL CONTROL POINTS SHOWN HAVE ELEVATIONS ESTABLISHED USING STANDARD SURVEYING PROCEDURES AND CAN BE USED AS TEMPORARY BENCHMARKS. WHEN USING A CONTROL POINT AS A TEMPORARY BENCHMARK, IT IS RECOMMENDED THAT CROSS-CHECKS BE MADE TO OTHER CONTROL POINTS OR BENCHMARKS TO CONFIRM ELEVATIONS PRIOR TO USE.



SANITARY SEWER PLANS FOR
AUBURN LAKES ADDITION
 PHASE 3

©2021
MKEC Engineering
All Rights Reserved
www.mkec.com
These drawings and their contents, including, but not limited to, all concepts, designs, & ideas are the exclusive property of MKEC Engineering (MKEC), and may not be used or reproduced in any way without the express consent of MKEC.

TITLE SHEET

| | | |
|-------------|-----------------|---------|
| PROJECT NO. | 468-2020-033942 | |
| DATE | FEB. 2021 | |
| SCALE | 1" = 200' | |
| DESIGNED | DRAWN | CHECKED |
| DLF | CRM | SLF |
| NO. | REVISION | DATE |

SHEET NO.
01 OF 17

©2021
MKEC Engineering
All Rights Reserved
www.mkec.com
These drawings and their contents, including, but not limited to, all concepts, designs, & ideas are the exclusive property of MKEC Engineering (MKEC), and may not be used or reproduced in any way without the express consent of MKEC.

LINE 1A

PROJECT NO. 468-2020-033942

DATE FEB. 2021

SCALE 1"=40'

DESIGNED DFL DRAWN CRM CHECKED SLF

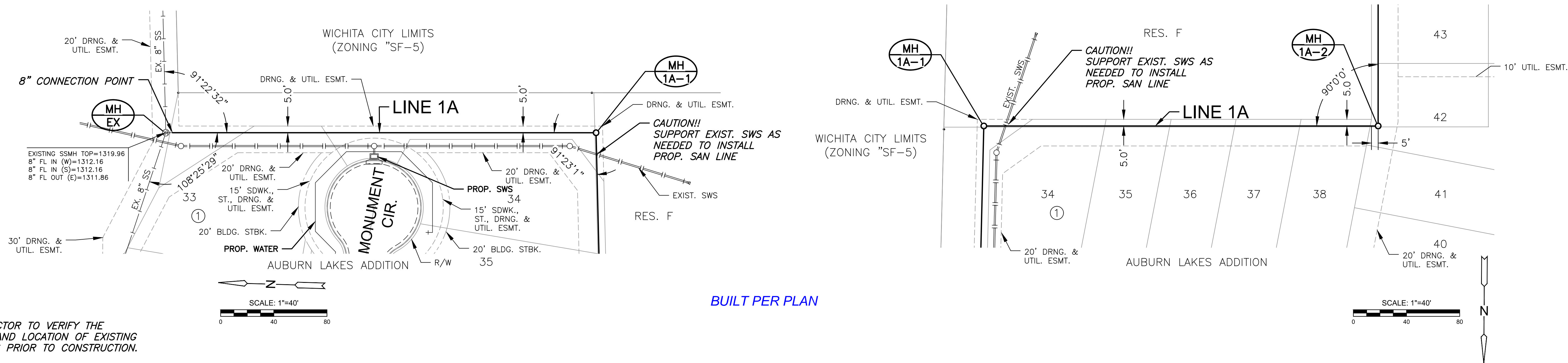
NO. REVISION DATE

SHEET NO.

05 OF 17

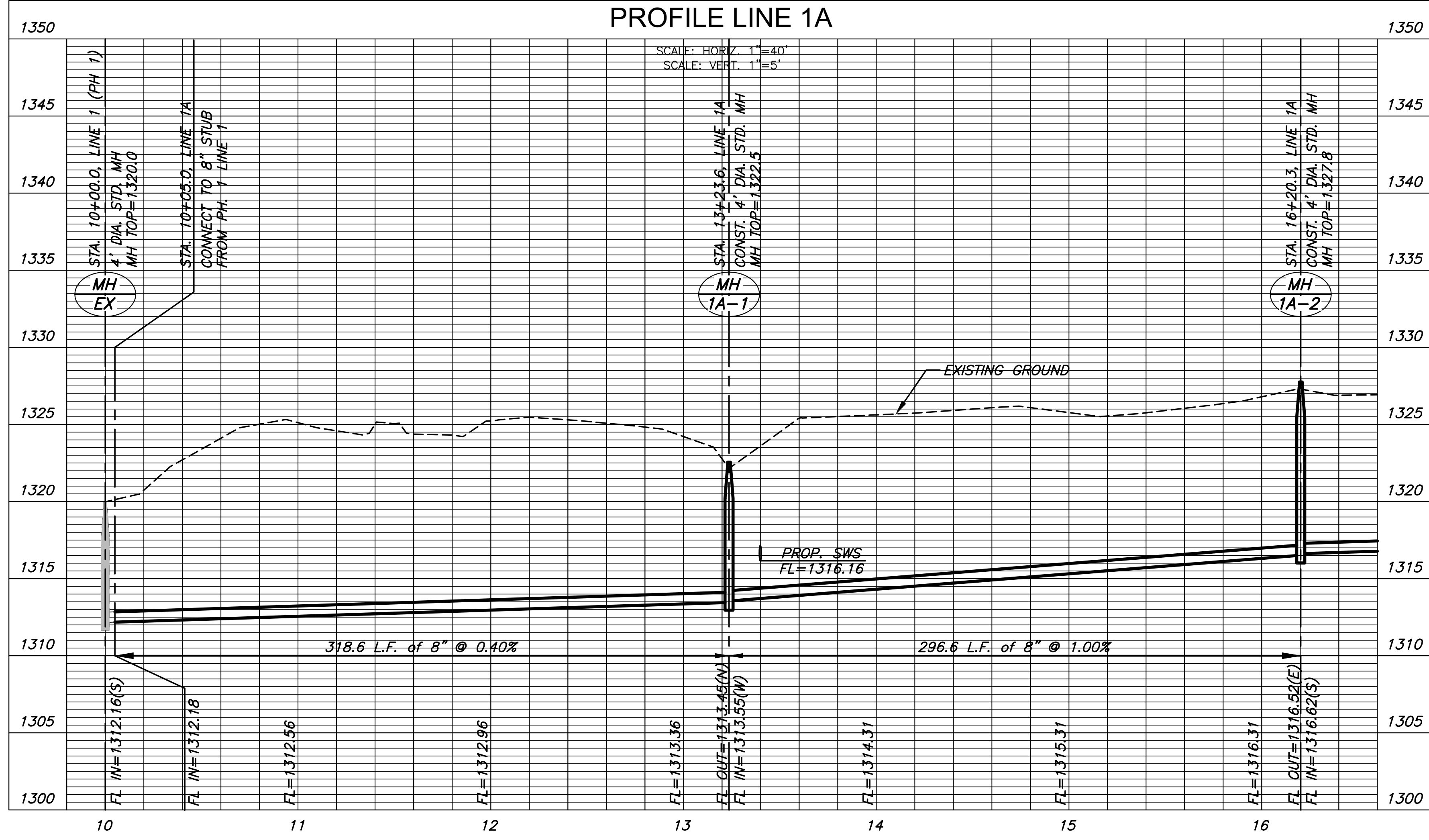
PLOTTED: Thursday, February 25, 2021 @ 04:08PM

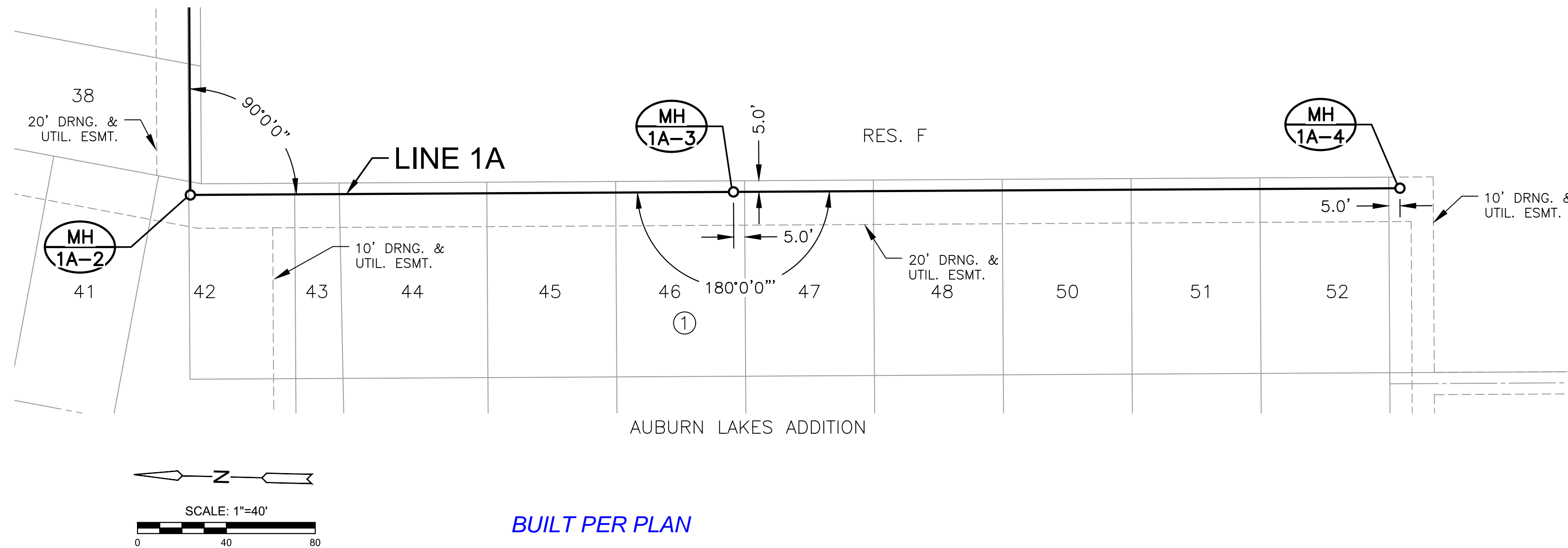
J:\PROJECTS\2016\1601010221_PERFECTION_AUBURN_LAKES_16221 CAD\SHOTS\05 CIVIL SAN\PHASE 3\16221-05-2201.DWG



BUILT PER PLAN

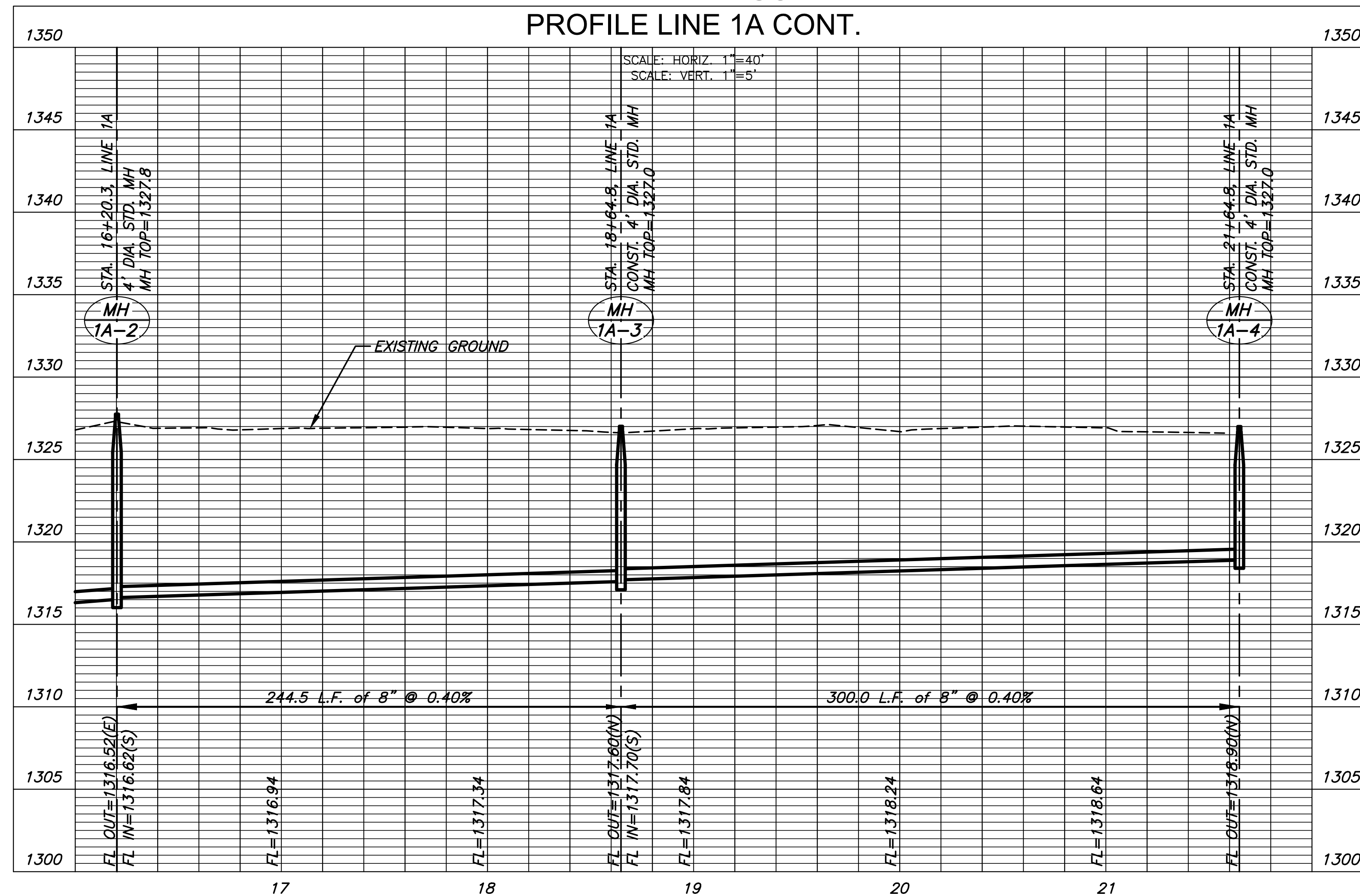
**PLAN LINE 1A
PROFILE LINE 1A**





NOTE:
 CONTRACTOR TO VERIFY THE
 DEPTH AND LOCATION OF EXISTING
 UTILITIES PRIOR TO CONSTRUCTION.

PLAN LINE 1A CONT.
 PROFILE LINE 1A CONT.



©2021
 MKEC Engineering
 All Rights Reserved
 www.mkec.com
 These drawings and their contents,
 including, but not limited to, all concepts,
 designs, & ideas are the exclusive
 property of MKEC Engineering (MKEC),
 and may not be used or reproduced in any
 way without the express consent of MKEC.

LINE 1A CONT.

| | |
|-------------|-----------------|
| PROJECT NO. | 468-2020-033942 |
| DATE | FEB. 2021 |
| SCALE | 1"=40' |
| DESIGNED | DFL |
| DRAWN | CRM |
| CHECKED | SLF |

| NO. | REVISION | DATE |
|-----|----------|------|
| | | |

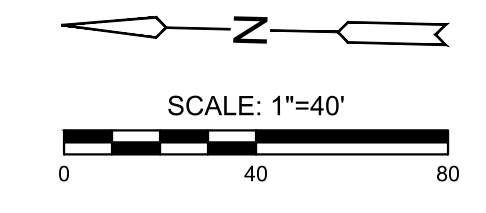
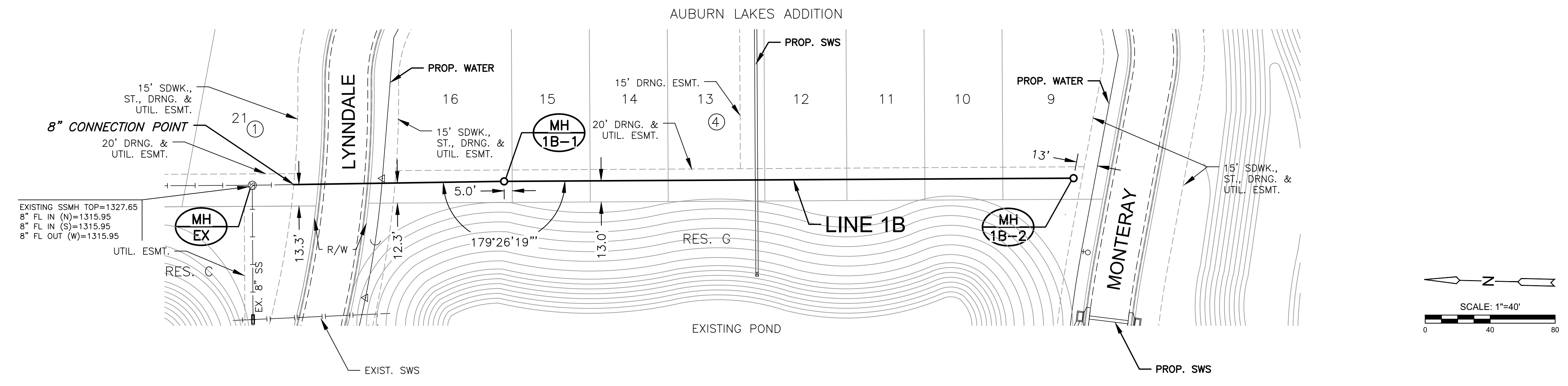
SHEET NO.

PLOTTED: Thursday, February 25, 2021 @ 01:35PM

J:\PROJECTS\2016\1601010221_PERFECTION_AUBURN_LAKES_16221_CAD\SHOTS\05_CIVIL\SANPHASE_3\16221-05-2203.DWG



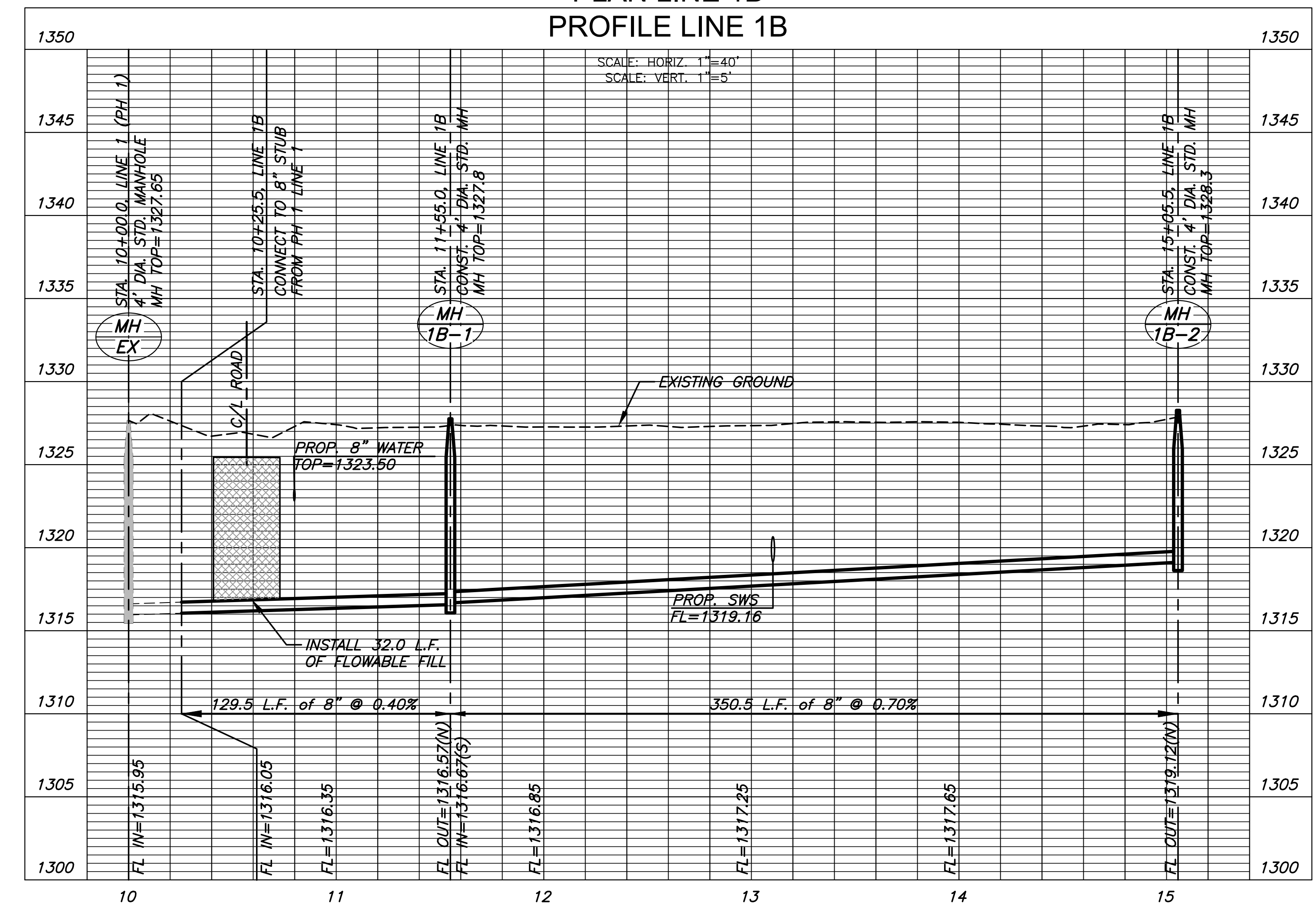
SANITARY SEWER PLANS FOR
AUBURN LAKES ADDITION
 PHASE 3



BUILT PER PLAN

NOTE:
 CONTRACTOR TO VERIFY THE
 DEPTH AND LOCATION OF EXISTING
 UTILITIES PRIOR TO CONSTRUCTION.

PLAN LINE 1B
 PROFILE LINE 1B

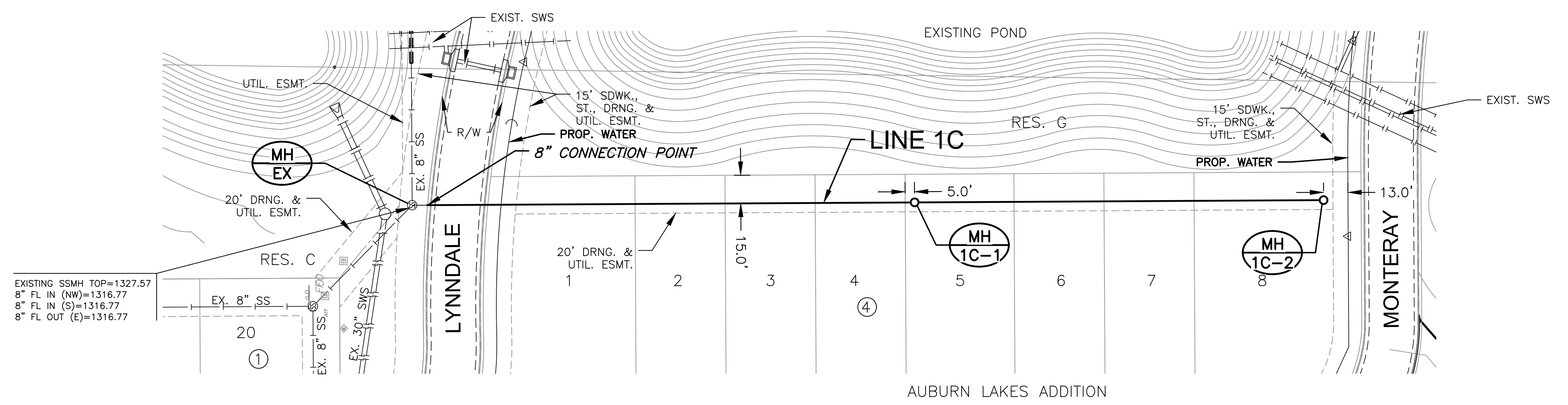


©2021
 MKEC Engineering
 All Rights Reserved
 www.mkec.com
 These drawings and their contents,
 including, but not limited to, all concepts,
 designs, & ideas are the exclusive
 property of MKEC Engineering (MKEC),
 and may not be used or reproduced in any
 way without the express consent of MKEC.

| | | |
|----------------|-----------------|---------|
| LINE 1B | | |
| PROJECT NO. | 468-2020-033942 | |
| DATE | FEB. 2021 | |
| SCALE | 1"=40' | |
| DESIGNED | DRAWN | CHECKED |
| DFL | CRM | SLF |
| NO. | REVISION | DATE |
| SHEET NO. | | |
| 07 OF 17 | | |

PLOTTED: Thursday, February 25, 2021 @ 01:55PM

J:\PROJECTS\2016\1601010221_PERFECTION_AUBURN_LAKES_16221_CAD\SHOTS\05_CIVIL\SANPHASE 3\16221-05-2204.DWG

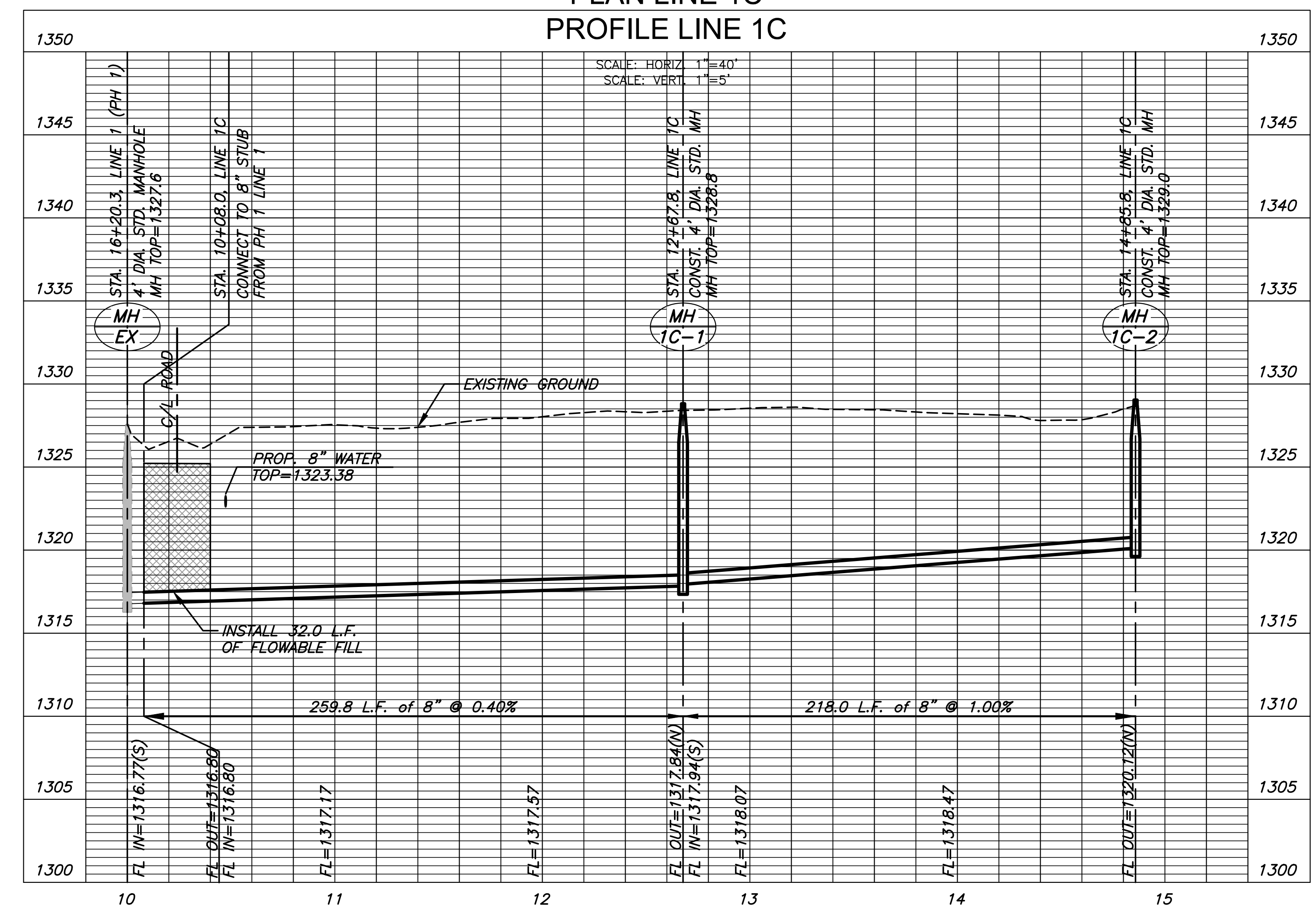


BUILT PER PLAN



NOTE:
CONTRACTOR TO VERIFY THE
DEPTH AND LOCATION OF EXISTING
UTILITIES PRIOR TO CONSTRUCTION.

PLAN LINE 1C
PROFILE LINE 1C



©2021
MKEC Engineering
All Rights Reserved
www.mkec.com
These drawings and their contents, including, but not limited to, all concepts, designs, & ideas are the exclusive property of MKEC Engineering (MKEC), and may not be used or reproduced in any way without the express consent of MKEC.

| LINE 1C | | |
|-----------------------|-----------------|------|
| PROJECT NO. | 468-2020-033942 | |
| DATE | FEB. 2021 | |
| SCALE | 1"=40' | |
| DESIGNED | DFL | |
| DRAWN | CRM | |
| CHECKED | SLF | |
| NO. | REVISION | DATE |
| SHEET NO. 08 OF 17 | | |

©2021
 MKEC Engineering
 All Rights Reserved
 www.mkec.com
 These drawings and their contents, including, but not limited to, all concepts, designs, & ideas are the exclusive property of MKEC Engineering (MKEC), and may not be used or reproduced in any way without the express consent of MKEC.

LINE 1D

PROJECT NO. 468-2020-033942

DATE FEB. 2021

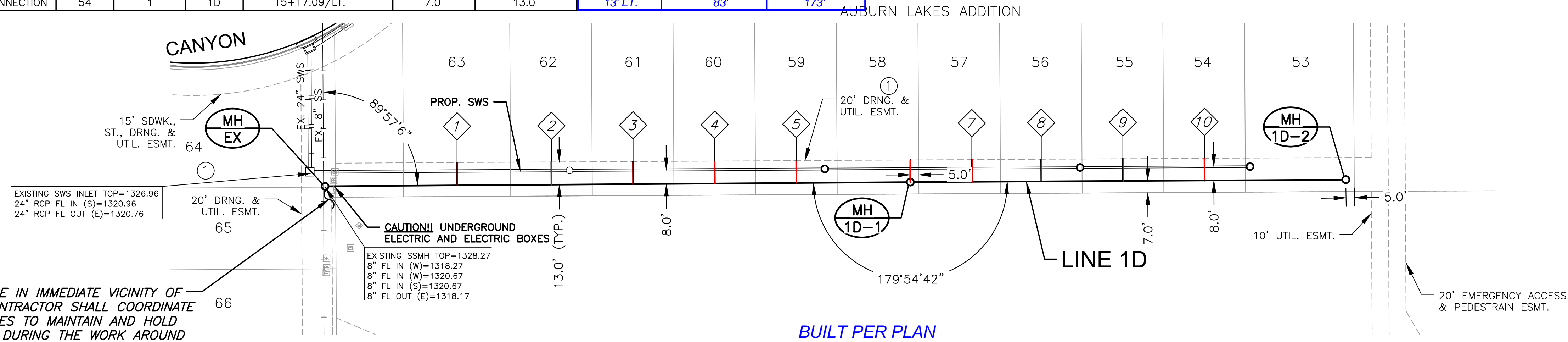
SCALE 1"=40'

DESIGNED DFL DRAWN CRM CHECKED SLF

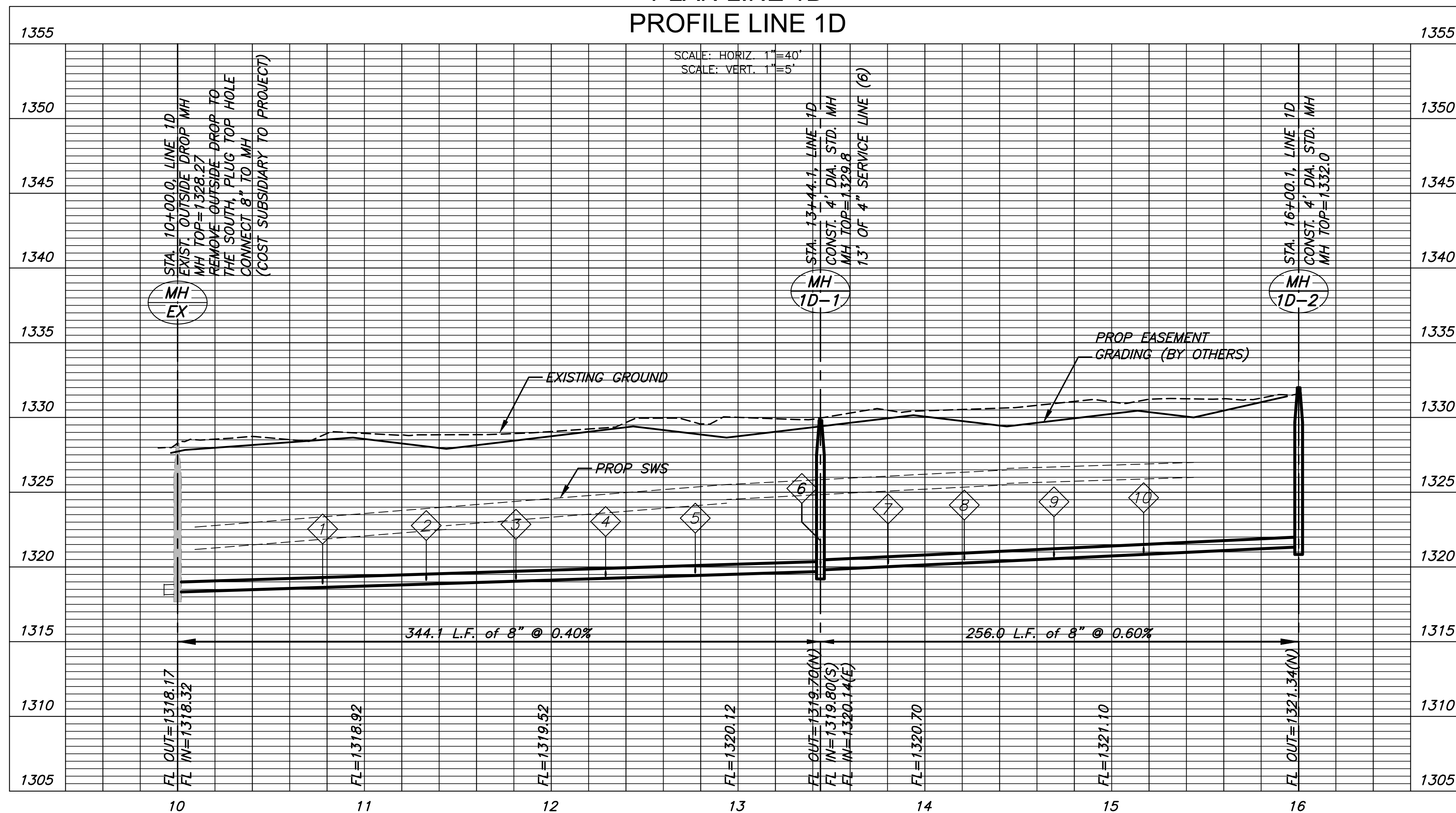
NO. REVISION DATE

SHEET NO.

| NO. | TYPE | LOCATION | | | STATION | FOR INFORMATION ONLY | | DISTANCE FROM MAIN TO RISER | DISTANCE FROM | |
|-----|------------------------|----------|-----------|----------|--------------|----------------------|---------------|-----------------------------|-----------------|-------------|
| | | LOT NO. | BLOCK NO. | LINE NO. | | APPROXIMATE LENGTH | VERTICAL (FT) | | HORIZONTAL (FT) | UPSTREAM MH |
| 1 | TEE SERVICE CONNECTION | 63 | 1 | 1D | 10+77.62/LT. | 7.0' | 13.0' | 13' LT. | 267' | 77.6' |
| 2 | TEE SERVICE CONNECTION | 62 | 1 | 1D | 11+33.08/LT. | 7.0' | 13.0' | 13' LT. | 211' | 133' |
| 3 | TEE SERVICE CONNECTION | 61 | 1 | 1D | 11+81.11/LT. | 7.0' | 13.0' | 13' LT. | 163' | 181' |
| 4 | TEE SERVICE CONNECTION | 60 | 1 | 1D | 12+29.11/LT. | 7.0' | 13.0' | 13' LT. | 115' | 229' |
| 5 | TEE SERVICE CONNECTION | 59 | 1 | 1D | 12+77.08/LT. | 7.0' | 13.0' | 13' LT. | 67' | 277' |
| 6 | 6" MH CONNECTION | 58 | 1 | 1D | 13+44.10/LT. | 7.0' | 13.0' | 13' LT. | @ MH | @ MH |
| 7 | TEE SERVICE CONNECTION | 57 | 1 | 1D | 12+80.31/LT. | 7.0' | 13.0' | 13' LT. | 220' | 36' |
| 8 | TEE SERVICE CONNECTION | 56 | 1 | 1D | 14+21.09/LT. | 7.0' | 13.0' | 13' LT. | 179' | 77' |
| 9 | TEE SERVICE CONNECTION | 55 | 1 | 1D | 14+69.09/LT. | 7.0' | 13.0' | 13' LT. | 131' | 125' |
| 10 | TEE SERVICE CONNECTION | 54 | 1 | 1D | 15+17.09/LT. | 7.0' | 13.0' | 13' LT. | 83' | 173' |

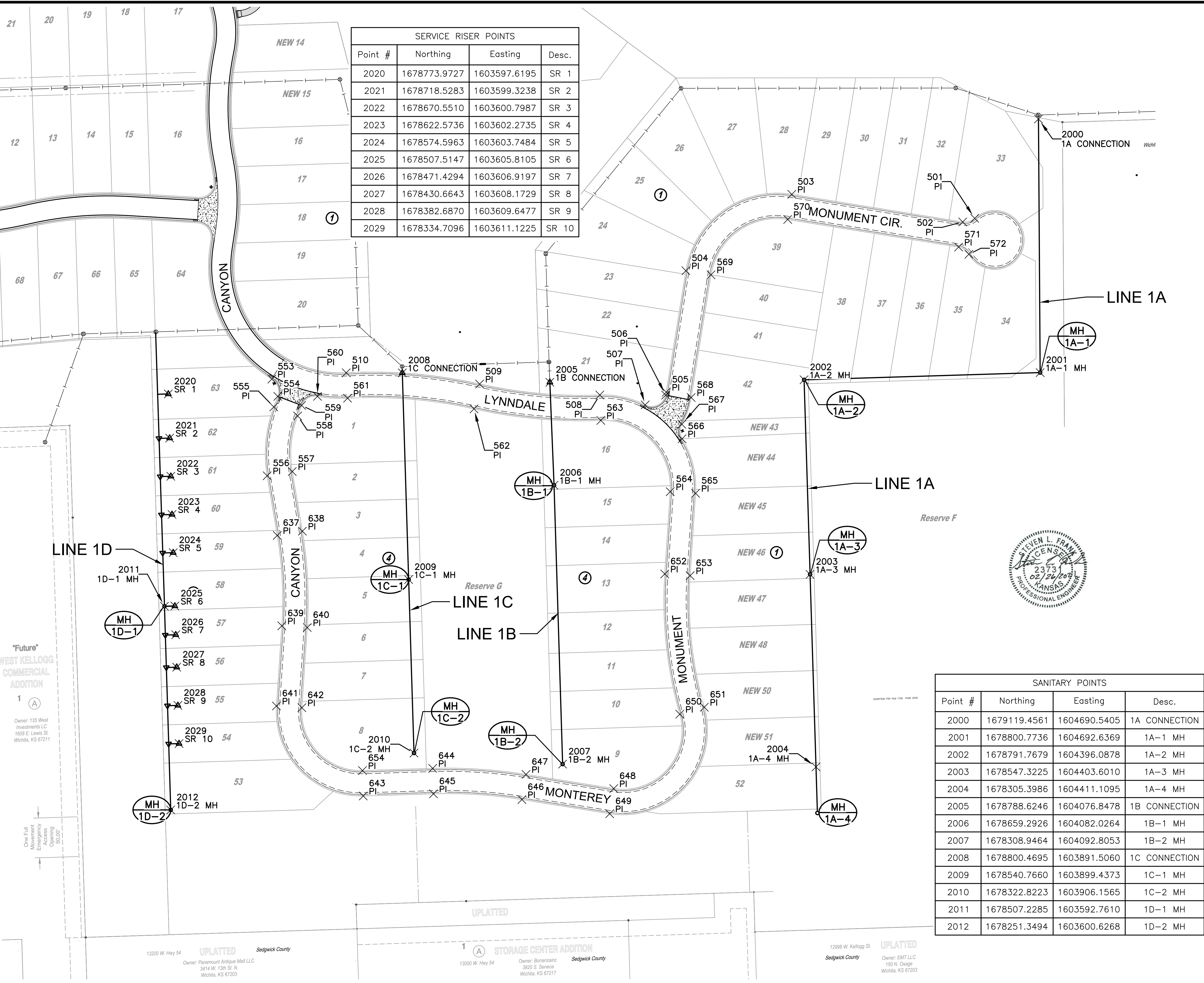


**PLAN LINE 1D
 PROFILE LINE 1D**



PLOTTED: Thursday, February 25, 2021 @ 01:36PM
 J:\PROJECTS\2018\1601010221_PERFECTION_AUBURN_LAKES_16221_CAD\SHOTS\05_CIVIL\SAN\PHASE 3\16221-05-2205.DWG

J:\PROJECTS\2018\1601010221_PERFECTION_AUBURN_LAKES_16221_CAD\SHOTS\05_CIVIL\SANPHASE_3\16221-05-2301.DWG
 PLOTTED: Thursday, February 25, 2021 @ 01:37PM
 Owner: 135 West Investments LLC, 1608 E. Lewis St, Wichita, KS 67211
 One Full Movement Emergency Access 50,000'



| SERVICE RISER POINTS | | | |
|----------------------|--------------|--------------|-------|
| Point # | Northing | Easting | Desc. |
| 2020 | 1678773.9727 | 1603597.6195 | SR 1 |
| 2021 | 1678718.5283 | 1603599.3238 | SR 2 |
| 2022 | 1678670.5510 | 1603600.7987 | SR 3 |
| 2023 | 1678622.5736 | 1603602.2735 | SR 4 |
| 2024 | 1678574.5963 | 1603603.7484 | SR 5 |
| 2025 | 1678507.5147 | 1603605.8105 | SR 6 |
| 2026 | 1678471.4294 | 1603606.9197 | SR 7 |
| 2027 | 1678430.6643 | 1603608.1729 | SR 8 |
| 2028 | 1678382.6870 | 1603609.6477 | SR 9 |
| 2029 | 1678334.7096 | 1603611.1225 | SR 10 |

| SANITARY POINTS | | | |
|-----------------|--------------|--------------|---------------|
| Point # | Northing | Easting | Desc. |
| 2000 | 1679119.4561 | 1604690.5405 | 1A CONNECTION |
| 2001 | 1678800.7736 | 1604692.6369 | 1A-1 MH |
| 2002 | 1678791.7679 | 1604396.0878 | 1A-2 MH |
| 2003 | 1678547.3225 | 1604403.6010 | 1A-3 MH |
| 2004 | 1678305.3986 | 1604411.1095 | 1A-4 MH |
| 2005 | 1678788.6246 | 1604076.8478 | 1B CONNECTION |
| 2006 | 1678659.2926 | 1604082.0264 | 1B-1 MH |
| 2007 | 1678308.9464 | 1604092.8053 | 1B-2 MH |
| 2008 | 1678800.4695 | 1603891.5060 | 1C CONNECTION |
| 2009 | 1678540.7660 | 1603899.4373 | 1C-1 MH |
| 2010 | 1678322.8223 | 1603906.1565 | 1C-2 MH |
| 2011 | 1678507.2285 | 1603592.7610 | 1D-1 MH |
| 2012 | 1678251.3494 | 1603600.6268 | 1D-2 MH |

| PLAT POINTS | | | |
|-------------|--------------|--------------|-------|
| Point # | Northing | Easting | Desc. |
| 501 | 1678994.6201 | 1604610.4448 | PI |
| 502 | 1678990.0923 | 1604595.3810 | PI |
| 503 | 1679024.7864 | 1604380.6729 | PI |
| 504 | 1678928.7759 | 1604247.6542 | PI |
| 505 | 1678776.2382 | 1604223.0061 | PI |
| 506 | 1678772.5237 | 1604222.3081 | PI |
| 507 | 1678760.2420 | 1604196.5727 | PI |
| 508 | 1678772.6774 | 1604139.5935 | PI |
| 509 | 1678786.4431 | 1603988.6216 | PI |
| 510 | 1678800.5813 | 1603821.0789 | PI |
| 553 | 1678792.6342 | 1603727.6478 | PI |
| 554 | 1678770.8987 | 1603735.1199 | PI |
| 555 | 1678757.6638 | 1603730.1176 | PI |
| 556 | 1678671.1816 | 1603721.7401 | PI |
| 557 | 1678676.5394 | 1603753.2884 | PI |
| 558 | 1678746.3503 | 1603760.0510 | PI |
| 559 | 1678759.5855 | 1603765.0533 | PI |
| 560 | 1678770.9452 | 1603785.0337 | PI |
| 561 | 1678768.6258 | 1603822.7651 | PI |
| 562 | 1678755.2220 | 1603981.6042 | PI |
| 563 | 1678740.7021 | 1604140.8486 | PI |
| 564 | 1678651.2388 | 1604227.9611 | PI |
| 565 | 1678649.1329 | 1604259.8917 | PI |
| 566 | 1678717.6191 | 1604242.9004 | PI |
| 567 | 1678735.9183 | 1604242.5543 | PI |
| 568 | 1678769.5020 | 1604254.3326 | PI |
| 569 | 1678923.6713 | 1604279.2445 | PI |
| 570 | 1678993.1962 | 1604375.5684 | PI |
| 571 | 1678958.5021 | 1604590.2764 | PI |
| 572 | 1678949.4604 | 1604603.1475 | PI |
| 637 | 1678596.1922 | 1603734.4754 | PI |
| 638 | 1678601.5499 | 1603766.0237 | PI |
| 639 | 1678482.6427 | 1603740.2143 | PI |
| 640 | 1678480.4931 | 1603772.1420 | PI |
| 641 | 1678381.9403 | 1603733.4342 | PI |
| 642 | 1678379.7906 | 1603765.3619 | PI |
| 643 | 1678268.8697 | 1603842.4517 | PI |
| 644 | 1678303.5662 | 1603929.6800 | PI |
| 645 | 1678271.5813 | 1603930.6632 | PI |
| 646 | 1678264.3789 | 1604041.7657 | PI |
| 647 | 1678295.9692 | 1604046.8703 | PI |
| 648 | 1678278.1614 | 1604157.0756 | PI |
| 649 | 1678246.5711 | 1604151.9711 | PI |
| 650 | 1678371.6124 | 1604240.0129 | PI |
| 651 | 1678380.4334 | 1604270.7731 | PI |
| 652 | 1678547.8090 | 1604221.1397 | PI |
| 653 | 1678545.7026 | 1604253.0703 | PI |
| 654 | 1678300.8546 | 1603841.4685 | PI |



SANITARY SEWER PLANS FOR
AUBURN LAKES ADDITION
 PHASE 3

©2021 MKEC Engineering
 All Rights Reserved
 www.mkec.com
 These drawings and their contents, including, but not limited to, all concepts, designs, & ideas are the exclusive property of MKEC Engineering (MKEC), and may not be used or reproduced in any way without the express consent of MKEC.

BUBBLE MAP

| | | |
|-------------|-----------------|---------|
| PROJECT NO. | 468-2020-033942 | |
| DATE | FEB. 2021 | |
| SCALE | 1"= | |
| DESIGNED | DRAWN | CHECKED |
| DFL | CRM | SLF |

| NO. | REVISION | DATE |
|-----|----------|------|
| | | |
| | | |
| | | |
| | | |

SHEET NO. 10 OF 17