

We, MKEC Engineering Consultants, Inc., a Registered Corporate Land Surveyor in Kansas, do hereby certify that we have been in responsible charge of surveying and platting of "NORTHWEST YMCA ADDITION" an addition to, Sedgwick County, Kansas, into Lots, a Block, a Reserve, and Streets, the same being accurately set forth in the accompanying plat and described herein.

A tract of land in the South half of the Southeast Quarter of Section 2, Township 27 South, Range 2 West of the 6th P.M., Sedgwick County, Kansas, described as follows:

BEGINNING at the Southeast corner of said Southeast Quarter; thence S88°37'28"W on a Kansas South Zone Grid Bearing along the South line of said Southeast Quarter, 1610.93 feet; thence N00°43'52"W, parallel with the East line of said section, 609.35 feet; thence S88°37'28"W, parallel with the South line of said section, 308.47 feet; thence N00°43'52"W, parallel with the East line of said section, 704.11 feet; thence N88°33'52"E, along the North line of the South half of said Southeast Quarter, 1919.42 feet to the sixteenth corner on the East line of said Southeast Quarter; thence S00°43'52"E, along the East line of said Southeast Quarter, 1315.46 feet to the POINT OF BEGINNING.

I hereby certify that the details of this plat are correct to the best of my knowledge and belief this ___ day of _____, 2004.

Gregory J. Allison, PE, LS #1257
MKEC Engineering Consultants, Inc.
411 North Webb Road
Wichita, Kansas 67206

Know all men by these presents that we the undersigned property owners of the land above set forth in the Registered Land Surveyor's Certificate, have caused the same to be surveyed and platted into Lots, a Block, a Reserve, and Streets the same to be known as "NORTHWEST YMCA ADDITION," an addition to, Sedgwick County, Kansas. Easements for the construction and maintenance of public utilities and drainage, as indicated on the accompanying plat are hereby granted to the public. The streets are hereby dedicated to and for the use of the public. All abutters right to access to or from 21st Street North over and across the South line of "NORTHWEST YMCA ADDITION," are hereby granted to the appropriate governing body, provided however, Lot 1 shall have access to 21st Street North at two locations having full turning movements, and Lot 2 shall have access to 21st Street North at two locations as indicated hereon. All abutters right to access to or from 135th Street West over and across the East line of "NORTHWEST YMCA ADDITION," are hereby granted to the appropriate governing body, provided however, Lot 2 shall have access to 135th Street West at one location as indicated hereon. A drainage plan has been developed for this plat and all drainage easements, right-of-way, or reserves shall remain at established grades or as modified with the approval of the applicable City or County Engineer, and unobstructed to allow for the conveyance of storm water. Lots 1 and 2, Block 1, are required to adhere to the minimum pad elevation as shown on the "Minimum Pad Elevations" table. The floodway, as indicated, shall be the responsibility of the owners until such time as the appropriate governing body exercising jurisdiction elects to assume the responsibility for the maintenance and improvements of the drainage, provided further, that no structure shall be constructed on or within said floodway, nor shall any fill, change of grade, creation of a channel or any other work be carried out without the permission of the City Engineer. Reserve "A" is platted for floodway drainage, open space, and outdoor recreational activities. The Reserve shall be owned and maintained by the owners of Lot 1, Block 1, Northwest YMCA Addition. This plat shall adhere and conform to the recitals of CUP DP-276 as approved and recorded at the Wichita-Sedgwick County Metropolitan Area Planning Department, Young Men's Christian Association of Wichita, Kansas, a Kansas corporation.

_____, General Executive
Dennis Shoenebeck, General Executive

STATE OF KANSAS, SEDGWICK COUNTY} ss:

This instrument was acknowledged before me on ___ day of _____, 2004, by Dennis Shoenebeck, General Executive, Young Men's Christian Association of Wichita, Kansas, a Kansas corporation.

IN WITNESS WHEREOF, I have hereunto set my hand and affixed my official seal, the day and year last above written.

My Term Expires: _____, Notary Public:
_____, Notary Public
Sign and print below

STATE OF KANSAS, SEDGWICK COUNTY} ss:

Entered on transfer record this ___ day of _____, 2004

_____, County Clerk
Don Brace, County Clerk

This is to certify that this instrument was filed for record in the Register of Deeds office this day of _____, 2004, at _____ o'clock _____ M, and is duly recorded.

DOCUMENT NO.

This plat of "NORTHWEST YMCA ADDITION" has been submitted to and approved by the Wichita-Sedgwick County Metropolitan Area Planning Commission, Wichita, Kansas.

Dated this ___ day of _____, 2004

WICHITA-SEDGWICK COUNTY METROPOLITAN AREA PLANNING COMMISSION

_____, Chair
Morris K. Dunlap, Chair

Affes: _____, Secretary
John L. Schlegel, Secretary

At the direction of the City Council.

_____, Mayor
Carlos Mayans, Mayor

Affes: _____, City Clerk
Karen Sublett, City Clerk

_____, Register of Deeds
Bill Meek, Register of Deeds

Affes: _____, Deputy
Linda Kizzire, Deputy

Reviewed in accordance with K.S.A. 58-2005 on this ___ day of _____, 2004.

STATE OF KANSAS, SEDGWICK COUNTY} ss:

This plat of "NORTHWEST YMCA ADDITION" has been submitted to and approved by the Board of Sedgwick County Commissioners, Sedgwick County, Kansas.

Dated this ___ day of _____, 2004

SEDGWICK COUNTY BOARD OF COUNTY COMMISSION

At the direction of the Board of Commissioners.

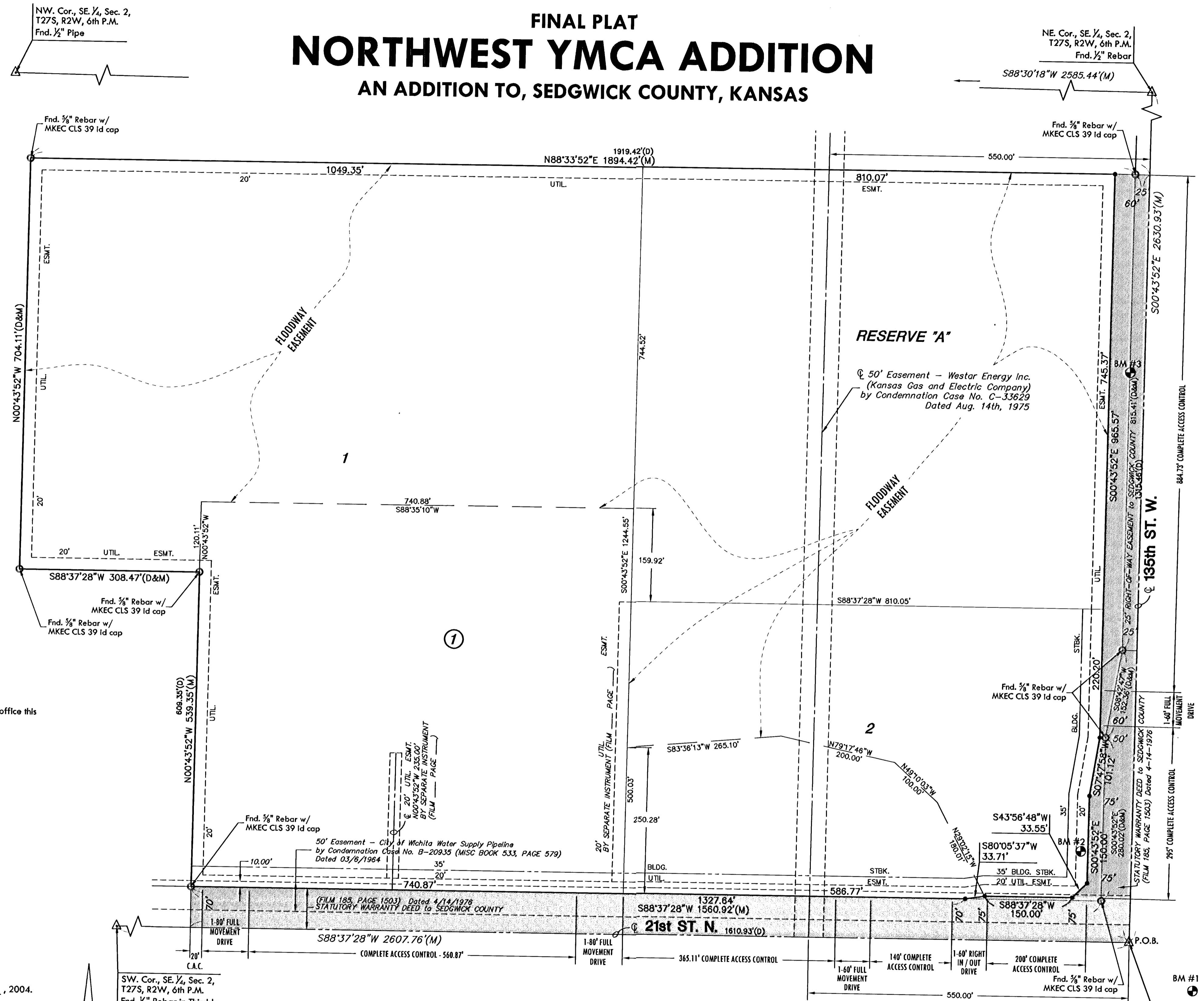
_____, Chair
Tom Winters, Chair

_____, Deputy County Surveyor
Tricia L. Robello, LS #1246
Deputy County Surveyor
Sedgwick County, Kansas

FINAL PLAT

NORTHWEST YMCA ADDITION

AN ADDITION TO, SEDGWICK COUNTY, KANSAS



LEGEND

- △ = Section Corner Monument Found
- = Found Survey Monument
- = 3/4" Rebar w/ MKEC CLS 39 Id. cap EXCEPT where annotated
- = Set 3/4" Rebar w/ MKEC CLS 39 Id. cap
- (M) = Measured
- (D) = Deeded
- ▭ = Street Dedication (width varies)

BENCH MARKS

- BM #1 M.J.H. disc #49 at Southwest corner of 21st and 135th
Elev.=1356.35 (NGVD) 168.95 (City)
- BM #2 Square cut at Southeast corner of Rural Water Vault at Southeast corner of Lot 2
Elev.=1366.07 (NGVD) 178.67 (City)
- BM #3 Railroad spike in East face of power pole, second power pole South of the (340) Northeast corner of Lot 1.
Elev.=1353.58 (NGVD) 166.18 (City)

NOTE

This plat shall adhere and conform to the recitals of CUP DP-276 as approved and recorded at the Wichita-Sedgwick County Metropolitan Planning Area Department.

MINIMUM PAD ELEVATIONS (LOWEST OPENINGS)			
LOT	BLOCK	ELEVATION (CITY DATUM)	ELEVATION (NGVD)
1	1	172.4	1359.8
2	1	170.4	1357.8

