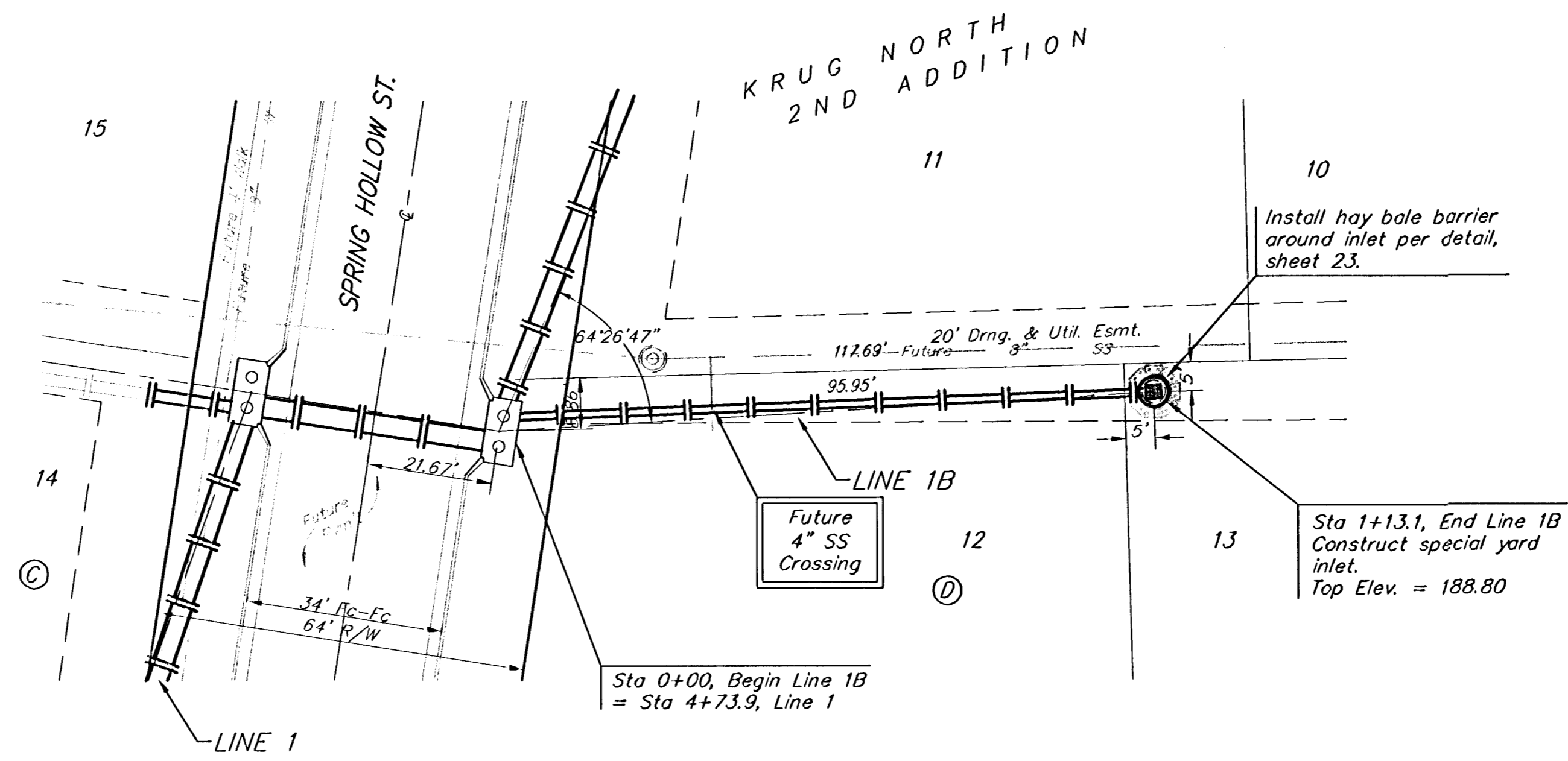


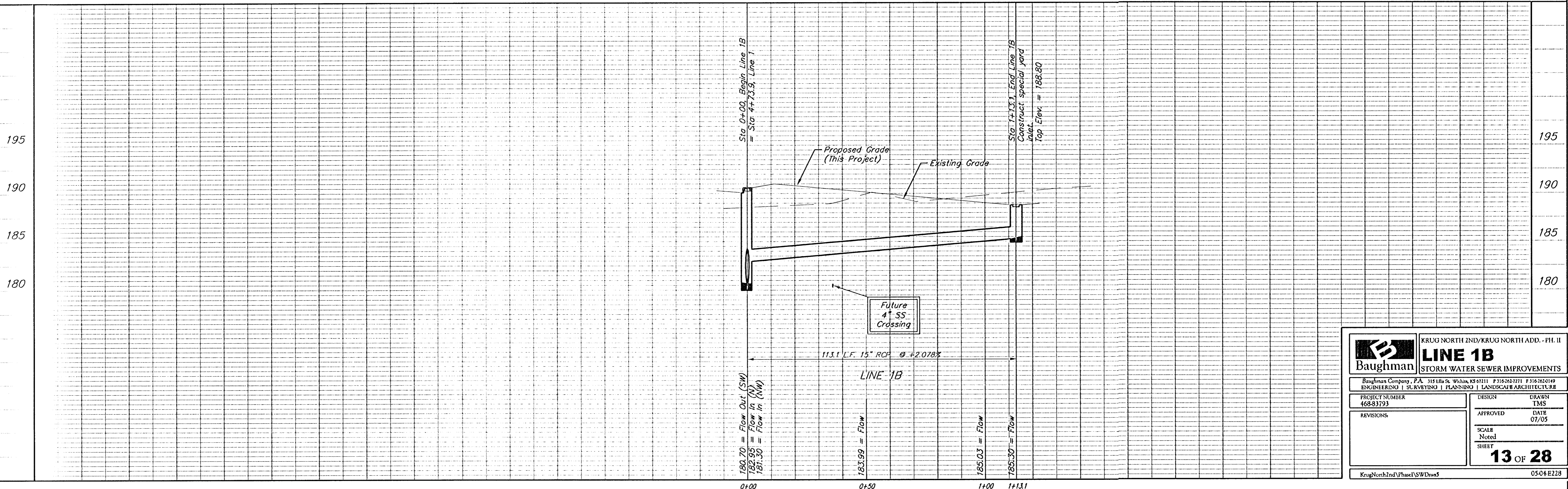
BENCHMARK:
 BM #1: "□" Cut in middle of
 N headwall of RCBC on 21st
 St. North. 1004.3' W & 22.1'
 N of SE Cor., SE1/4, Sec. 2,
 T-27-S, R-2-E.
 Elev. = 173.23 City Datum

BM #2: "□" Cut at the SE
 corner of the intersection of
 Castle Rock & Castle Rock Ct.,
 Krug North Addition.
 Elev. = 183.50 City Datum

Scale: 1" = 20' Horizontal
 1" = 5' Vertical
 • = Iron



Remove trees only as necessary
 for storm sewer construction and
 only with permission of Developer
 or Baughman Co. Cost of
 removal to be incidental to lump
 sum bid item "Site Clearing &
 Restoration".



	KRUG NORTH 2ND/KRUG NORTH ADD. - PH. II LINE 1B STORM WATER SEWER IMPROVEMENTS	
	<small>Baughman Company, P.A. 315 18th St., W. 2nd Fl., #315-262-2211 #315-262-0149 ENGINEERING SURVEYING PLANNING LANDSCAPE ARCHITECTURE</small>	
PROJECT NUMBER 468-81793	DESIGN TMS	DRAWN TMS
REVISIONS:	APPROVED DATE 07/05	SCALE Noted SHEET 13 OF 28
<small>KrugNorth2nd\Phase1\SWDwgs</small>		<small>0504E228</small>