

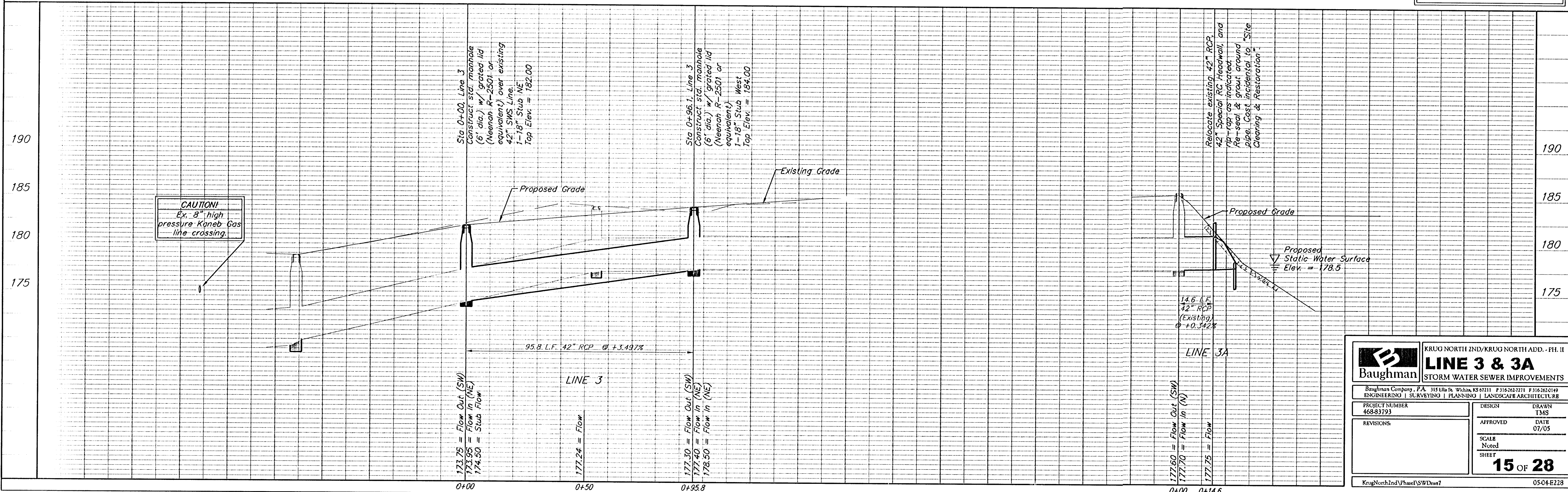
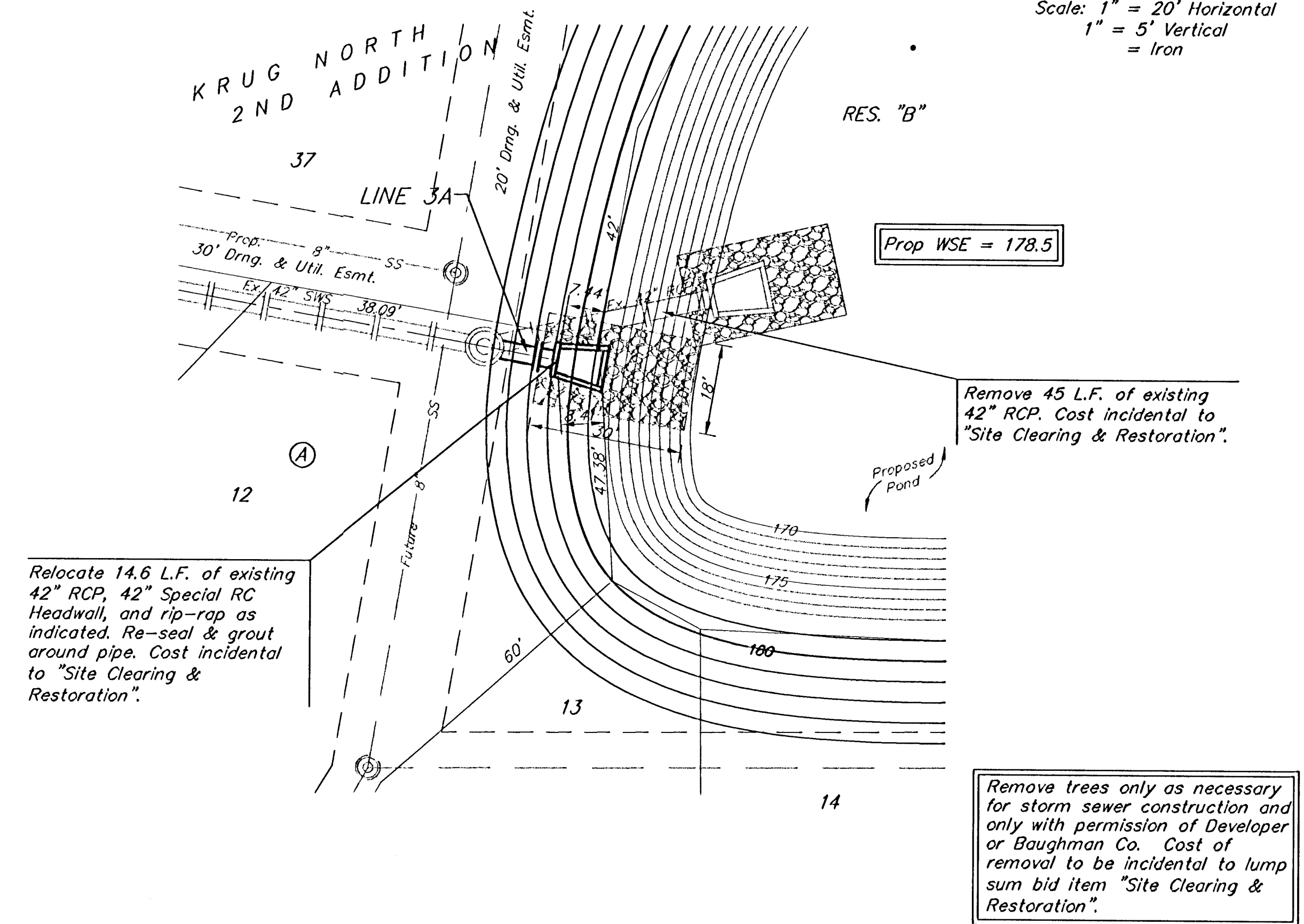
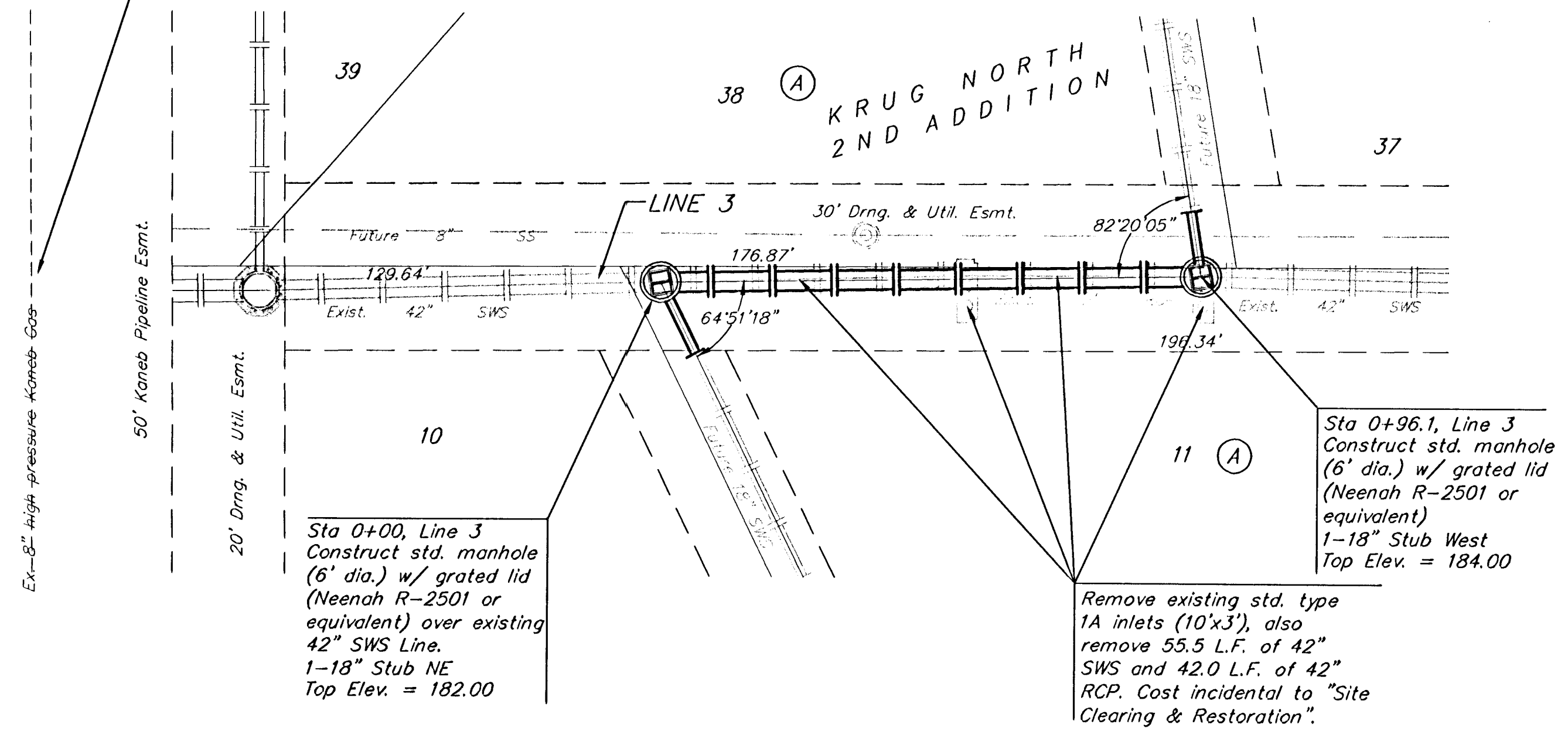
BENCHMARK:  
 BM #1: "□" Cut in middle of N headwall of RCBC on 21st St. North. 1004.3' W & 22.1' N of SE Cor., SE1/4, Sec. 2, T-27-S, R-2-E. Elev. = 173.23 City Datum

BM #2: "□" Cut at the SE corner of the intersection of Castle Rock & Castle Rock Ct., Krug North Addition. Elev. = 183.50 City Datum

**CAUTION!**  
 Ex. 8" high pressure Kaneb Gas line crossing. Contact J.B. Smith at (316)734-1223 prior to any construction in pipeline easement.

Scale: 1" = 20' Horizontal  
 1" = 5' Vertical  
 • = Iron

Scale: 1" = 20' Horizontal  
 1" = 5' Vertical  
 = Iron



**CAUTION!**  
 Ex. 8" high pressure Kaneb Gas line crossing.

<b>Baughman</b>		KRUG NORTH 2ND/KRUG NORTH ADD. - PH. II	
<b>LINE 3 &amp; 3A</b>		STORM WATER SEWER IMPROVEMENTS	
Baughman Company, P.A. 315 Ellis St. Wichita, KS 67211 F 3162627211 F 3162620149			
ENGINEERING   SURVEYING   PLANNING   LANDSCAPE ARCHITECTURE			
PROJECT NUMBER 468-83193	DESIGN	DRAWN TMS	
REVISIONS:	APPROVED	DATE 07/05	
	SCALE Noted	SHEET	
		<b>15 OF 28</b>	
KrugNorth2ndPhae1SWDws7		05-04-E228	