

GENERAL NOTES

- UNLESS SHOWN OR OTHERWISE STATED ON THESE DRAWINGS, MATERIALS AND CONSTRUCTION SHALL BE IN ACCORDANCE WITH THE CITY OF WICHITA STANDARD SPECIFICATIONS.
- THE CONTRACTOR SHALL BE RESPONSIBLE FOR PRESERVING PROPERTY IRONS. THE CONTRACTOR WILL BE REQUIRED TO REESTABLISH ANY PROPERTY IRONS WHICH ARE DAMAGED OR DESTROYED BY HIS CONSTRUCTION OPERATIONS. SUCH IRONS SHALL BE REESTABLISHED BY A LICENSED LAND SURVEYOR IN ACCORDANCE WITH STATE LAWS.
- EXISTING UTILITIES AND THEIR LOCATIONS, AS SHOWN ON THE PLANS REPRESENT THE BEST INFORMATION OBTAINABLE FOR DESIGN. LOCATION INFORMATION HAS BEEN OBTAINED FROM THE VARIOUS UTILITY COMPANIES AND IS EITHER FROM COMPANY RECORD DRAWINGS OR COMPANY PROVIDED FIELD LOCATIONS. THE PLAN LOCATIONS SHOWN ARE NOT GUARANTEED. ADDITIONAL EXISTING UTILITIES MAY ALSO BE ENCOUNTERED.
- CONTRACTOR WILL BE REQUIRED TO PROVIDE A MINIMUM ADVANCE NOTICE OF FORTY-EIGHT (48) HOURS TO UTILITY COMPANIES PRIOR TO STARTING ANY EXCAVATION AS FOLLOWS:

KANSAS ONE-CALL 1-800-344-7233
or 687-2470 (LOCAL WICHITA)

THE CONTRACTOR MUST NOTIFY THE FOLLOWING IN CASE OF AN EMERGENCY:

SBC (TELEPHONE)	800-870-8390
COX COMMUNICATIONS (CABLE)	262-0661
WESTAR (ELECTRIC)	383-8600
KANSAS GAS SERVICE (GAS)	832-3101
CITY OF WICHITA WATER & SEWER MAINTENANCE	262-6000
KANE PIPELINE	1-316-773-9000

- RUBBLE FROM THE REMOVAL OF MISCELLANEOUS STRUCTURES AND EXCESS EXCAVATION WHICH IS TO BE WASTED SHALL BE DISPOSED OF ON SITES TO BE PROVIDED BY THE CONTRACTOR. THESE SITES SHALL BE APPROVED BY THE ENGINEER AS TO SUITABILITY, APPEARANCE AND SITE LOCATION. LOCATIONS THAT, IN THE OPINION OF THE ENGINEER, WILL LEAVE AN UNSIGHTLY APPEARANCE WILL NOT BE APPROVED. ALL DISPOSAL SITES MUST BE APPROVED BY THE KANSAS DEPARTMENT OF HEALTH AND ENVIRONMENT. MATERIAL EITHER STOCKPILED OR DISPOSED OF IN A FLOOD PLAIN WOULD REQUIRE A KANSAS STATE BOARD OF AGRICULTURE PERMIT. ANY MATERIAL BURIED OR STOCKPILED BEYOND APPROVED CONSTRUCTION LIMITS WOULD REQUIRE ADDITIONAL ARCHAEOLOGICAL INVESTIGATIONS UNLESS BURIED IN A PREVIOUSLY APPROVED BORROW LOCATION.
- COST OF EXCAVATION, HAULING, AND DUMPING OF EXCESS EXCAVATION SHALL BE SUBSIDIARY TO THE PROJECT.
- A PORTION OF EXCESS EXCAVATED MATERIAL SHALL BE MOUNDED AROUND MANHOLES WHICH EXTEND MORE THAN ONE (1) FOOT ABOVE THE EXISTING GROUND. SUCH MOUNDS SHALL BE CONSTRUCTED WITH A SIX (6) FOOT DIAMETER FLAT TOP WITH 4 TO 1 SIDE SLOPES DOWN TO THE ORIGINAL GROUND. THE ELEVATION OF THE FLAT TOP OF THE MOUND SHALL BE 0.4 FOOT BELOW THE TOP OF THE MANHOLE.
- ALL STUBS AND PLUGGED PIPES SHALL BE LOCATED WITH GREEN PLASTIC TAPE IN THE SAME MANNER AS RISERS.
- PRIOR TO LAYING SEWER LINES USING EXISTING STUBS IN EXISTING MANHOLES, THE CONTRACTOR SHALL EXPOSE AND VERIFY THE ELEVATION, GRADE AND ALIGNMENT OF EXISTING STUBS AND NOTIFY THE ENGINEER OF ANY DEVIATION FROM THE PLAN. WHERE CONNECTION TO AN EXISTING MANHOLE THAT DOES NOT HAVE AN EXISTING STUB OR THE STUB IS UNUSABLE DUE TO ELEVATION GRADE OR ALIGNMENT, THE CONTRACTOR SHALL RESHAPE THE EXISTING MANHOLE INVERT TO PROVIDE SMOOTH FLOW. THE COST OF RESHAPING EXISTING MANHOLE INVERTS IS INCIDENTAL TO THE PROJECT.
- ALL EXISTING TREES ARE AN IMPORTANT ASSET TO THE DEVELOPER. NO TREE OF ANY SIZE SHALL BE REMOVED UNLESS NOTED OTHERWISE. THE CONTRACTOR SHALL COORDINATE TREE REMOVAL WITH MKEC.
- ALL DISTURBED AREAS TO BE SEEDED WITH RYE GRASS AT A RATE OF 200LBS./ ACRE WITHIN 10 DAYS OF CONSTRUCTION.
- EXCESS EXCAVATION MAY BE WASTED ON SITE IN APPROVED LOCATIONS.
- CONTRACTOR SHALL MAINTAIN EROSION CONTROL THROUGHOUT CONSTRUCTION. COST SUBSIDIARY TO BID ITEM FOR BMP.
- CONTRACTOR TO PRESERVE EXISTING LANDSCAPING. ANY LANDSCAPED AREAS DISTURBED DUE TO THE SPECIFIED WORK OR CONTRACTOR'S NEGLIGENCE SHALL BE REPLACED WITH MATERIAL OF THE SAME ATTRIBUTES AS EXISTING. COST SUBSIDIARY TO PROJECT.
- CONTRACTOR TO INSTALL PLASTIC SEWER MANHOLE MARKERS. SEWER DEPARTMENT WILL PROVIDE THE MATERIALS. COST TO INSTALL MARKERS SUBSIDIARY TO MANHOLES.

*McCullough Excavation, Inc. - Contractor
Eichacker, City - Inspector
Released 4/22/04
As-Built
Risers & Stubs
.pdf by JDL 6/21/04*

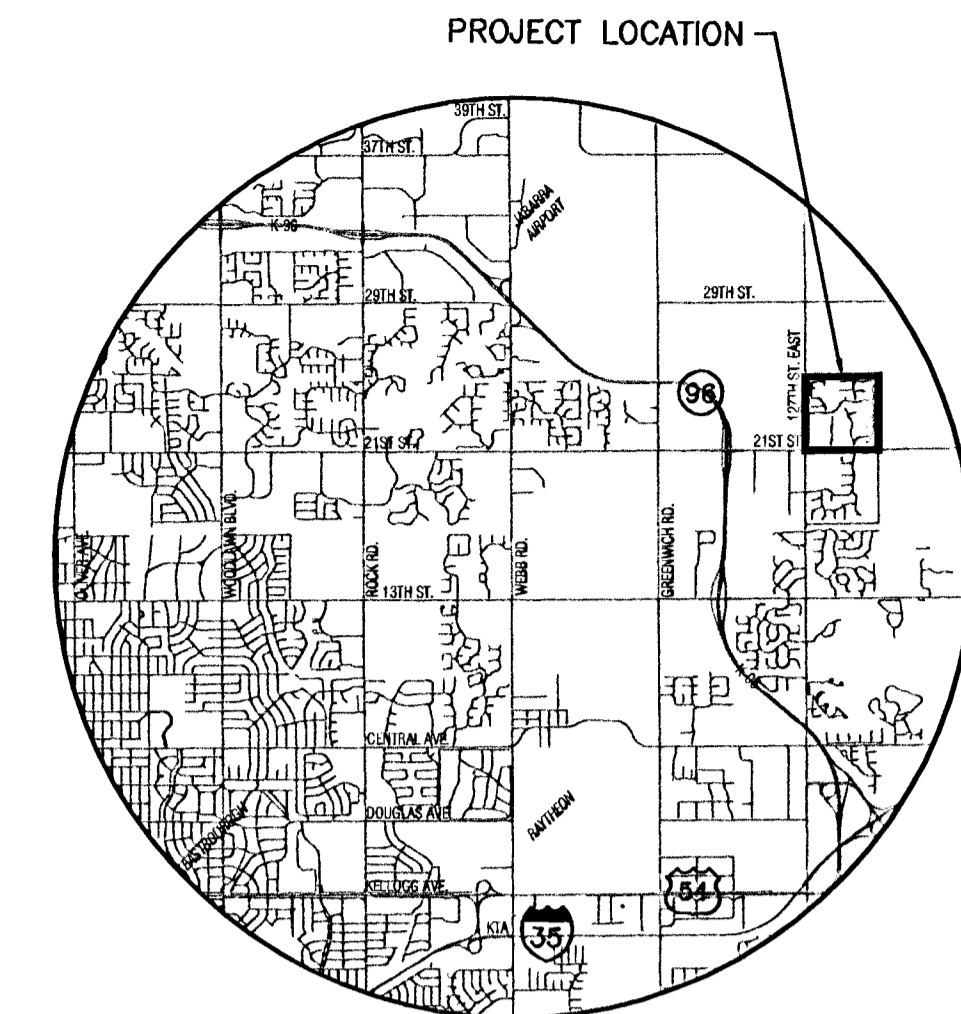
LATERAL 7, MAIN 13, FOUR MILE CREEK SEWER HAWTHORNE THIRD ADDITION PHASE 2

PROJECT NO. 468-83872

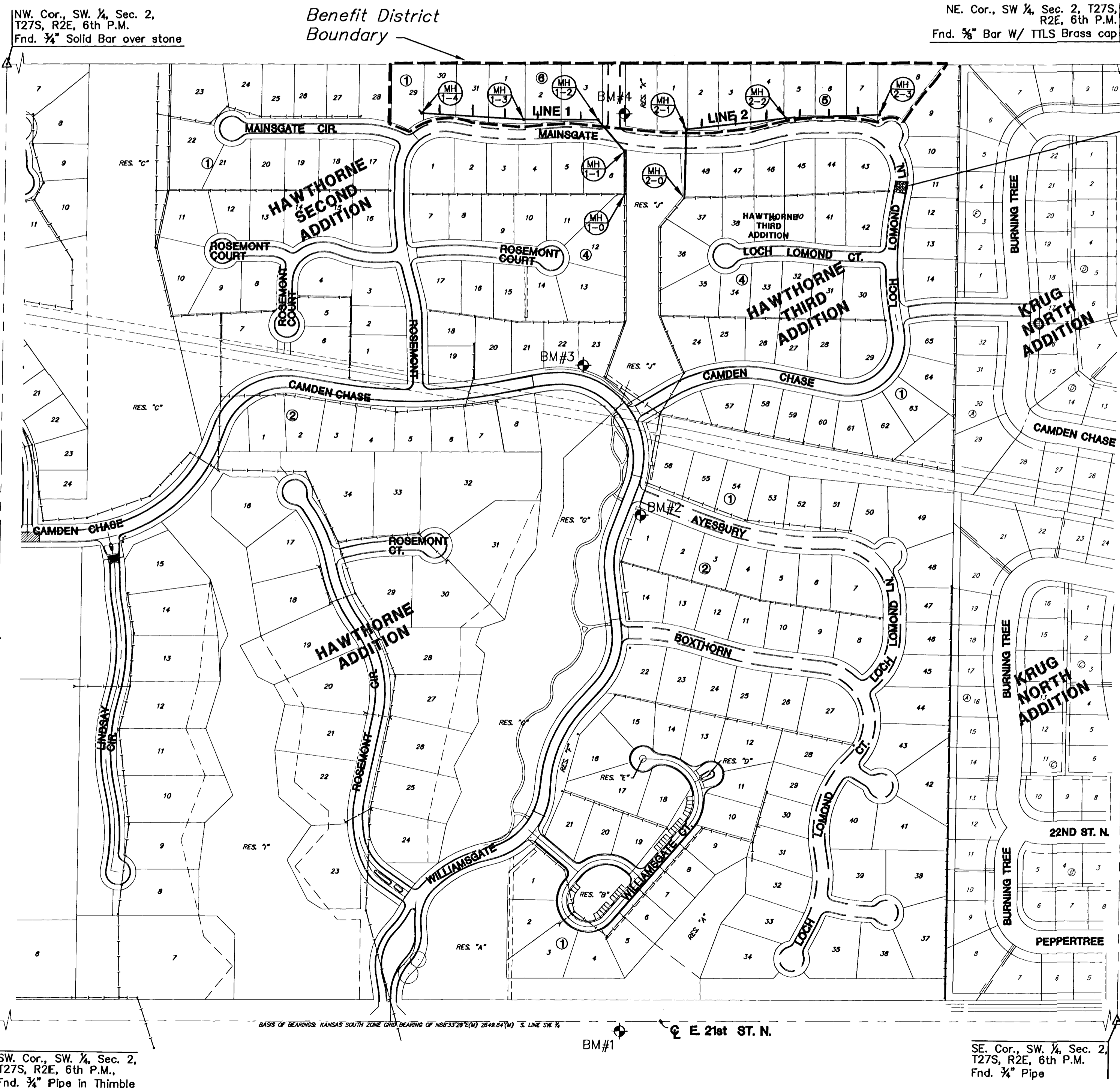
O.C.A # 744145

CITY OF WICHITA, KANSAS

JIM ARMOUR, P.E., CITY ENGINEER



LOCATION MAP



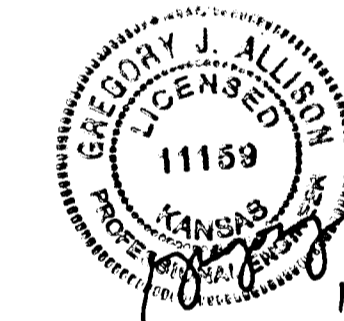
STABILIZED CONSTRUCTION ENTRANCE



SCALE: 1" = 200'

INDEX TO DRAWINGS

SHEET NO.	DESCRIPTION
1	TITLE SHEET
2	MANHOLE DETAILS
3	RISERS DETAILS
4	LINE 1
5	LINE 2
6-7	BMP DETAILS
8	BUBBLE MAP
9	FINAL PLAT



BENCHMARKS

- BM #1 RR SPIKE IN FACE OF 1ST PP SOUTH OF 21ST ST., 218'± WEST AND 48'± SOUTH OF THE N ¼ COR. SECTION 11-27S-2E ELEV=1357.15
- BM #2 "I" POST 33'± SOUTH AND 45'± EAST OF NW COR. LOT 1, BLOCK 2, HAWTHORNE 3RD ELEV=1364.24
- BM #3 "I" POST 56'± N AND 17'± W. OF CUSP OF CURVE AT SOUTH END OF RESERVE "J" ON CAMDEN CHASE ELEV=1361.18
- BM #4 "I" POST 5'± N, 5'± E OF SW COR. OF RESERVE "K" AT NE CORNER OF WILLIAMSGATE AND MAINSGATE ELEV.=1353.39

HAWTHORNE 3RD ADDITION - PHASE 2
PROJECT NAME

SANITARY SEWER PLANS
SHEET TITLE

DFL DESIGN BY:	MKEC DRAWN BY:	GJA CHECKED BY:
OCTOBER 2005 DATE	02167 JOB NO.	1 / 9 SHEET/OF

411 N. WEBB ROAD
WICHITA, KS. 67206
316-684-9600

SW. Cor., SW ¼, Sec. 2,
T27S, R2E, 6th P.M.,
Fnd. ¾" Pipe in Thimble

SE. Cor., SW ¼, Sec. 2,
T27S, R2E, 6th P.M.,
Fnd. ¾" Pipe

MKEC\LAB\744145\PH2\DWG\11159\31.DWG 11/12/05 10:28:55 AM CST