

FINAL PLAT

HAWTHORNE THIRD ADDITION

AN ADDITION TO WICHITA, SEDGWICK COUNTY, KANSAS

BM 431 1st Post 41' N. 5' W. of SE Cor. Williamsgate
 and Station on Hwy 279' N. S. of the
 and Station on Hwy 279' N. S. of the
 Elev. = 1364.24 (NGVD)
 176.84 City datum

BM 436 1st Post 5' N. & 5' W. of NW Cor.
 Room and Condom Chise - in Res. C.
 Elev. = 1368.63 (NGVD)
 181.23 City datum

NE Cor., SW 1/4, Sec. 2,
 T27S, R2E, 6th P.M.
 Find 3/4" Bar w/ TLLS
 Brass id. cap in Conc.

NE Cor., SE 1/4, Sec. 2,
 T27S, R2E, 6th P.M.
 Find 3/4" Rebar w/ cap in Thimble

LEGEND

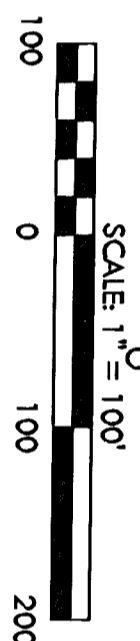
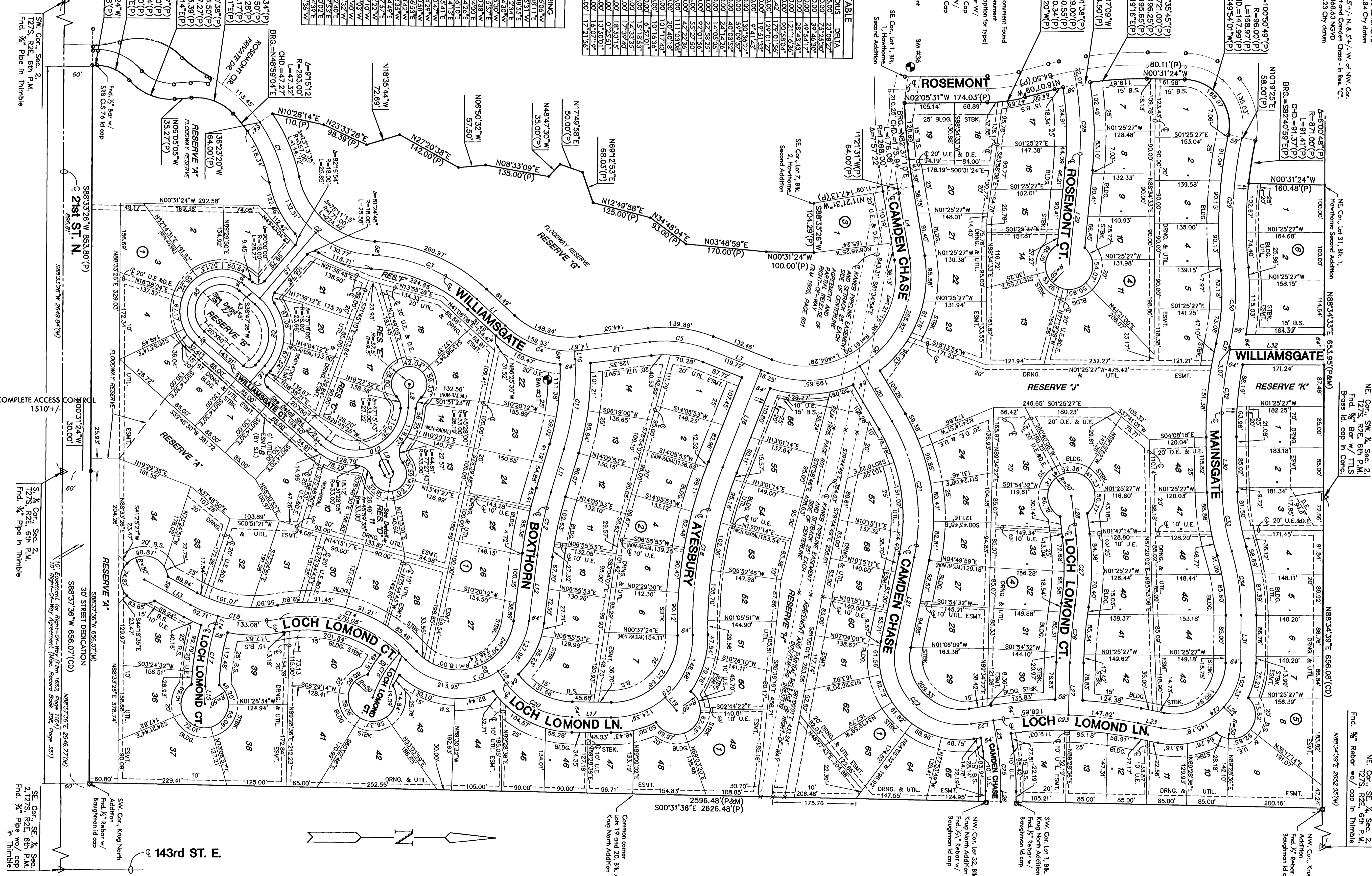
- △ = Station Corner Monument Found
- ⊠ = Found Survey Monument
- = Found 5/8" Rebar w/ MKCC C15 39 Id. Cap
- = Set 5/8" Rebar w/ MKCC C15 39 Id. Cap
- X = Node
- U.E. = Utility Easement
- D.E. = Drainage Easement
- (D) = Dotted
- (F) = Fenced
- (M) = Measured

CURVE	LENGTH	RADIUS	DELTA
C1	131.26	332.00	23.0827
C2	268.28	200.00	75.2830
C3	172.20	320.00	30.4630
C4	123.55	250.00	28.4212
C5	465.67	220.00	121.1436
C6	158.77	100.00	50.5804
C7	320.30	72.42	179.0156
C8	247.71	110.00	129.0177
C9	190.64	550.00	19.5133
C10	333.32	800.00	97.4128
C11	389.14	230.00	88.8427
C12	192.79	280.00	49.0352
C13	110.00	260.00	24.1426
C14	122.91	500.00	14.0355
C15	360.87	900.00	22.5825
C16	273.07	170.00	92.0156
C17	169.41	170.00	55.2750
C18	259.54	400.00	42.2236
C19	235.92	300.00	70.4039
C20	306.69	830.00	10.4039
C21	247.51	140.00	101.1743
C22	89.48	500.00	10.1636
C23	121.31	1000.00	6.5781
C24	147.01	550.00	17.8353
C25	177.88	700.00	17.3935
C26	277.42	900.00	1.3935
C27	184.81	500.00	18.5315
C28	188.43	748.00	12.6301
C29	136.62	450.00	16.0715
C30	136.39	450.00	17.2156

LINE	LENGTH	BEARING
L1	81.49	S41°00'00"W
L2	144.53	S08°48'11"W
L3	135.97	S19°59'31"W
L4	148.14	N7°28'39.53"E
L5	181.52	S51°12'34"E
L6	433.58	N50°14'30"W
L7	342.31	S59°43'30"W
L8	49.35	S59°43'30"W
L9	49.35	S59°43'30"W
L10	17.60	N83°24'00"E
L11	96.07	S74°44'26"E
L12	140.00	S84°29'10"E
L13	110.67	S75°42'41"E
L14	27.24	S75°42'41"E
L15	37.61	N89°50'42"W
L16	21.91	N70°04'29"W
L17	36.54	S47°03'43"W
L18	23.39	N82°52'36"E
L19	36.54	S47°03'43"W
L20	135.22	S37°52'33"W
L21	187.22	S79°44'49"E
L22	46.78	S10°47'57"E
L23	29.36	S09°53'22"W
L24	23.36	S09°53'22"W
L25	60.14	S79°12'03"W
L26	11.82	S89°53'00"W
L27	11.82	S89°53'00"W
L28	83.91	N81°33'40"E
L29	204.42	S85°57'30"E
L30	115.82	N87°20'02"E
L31	100.75	N83°34'39"E
L32	200.41	N01°35'56"E



MKEC
 ENGINEERING
 CONSULTANTS
 411 N. WEBB ROAD
 WICHITA, KS. 67206
 316 - 684 - 9600



SCALE: 1" = 100'

COMPLETE ACCESS ROAD
 1510' +/-

SW Cor., Sec. 2,
 T27S, R2E, 6th P.M.
 Find 3/4" Pipe in Thimble

SE Cor., Sec. 2,
 T27S, R2E, 6th P.M.
 Find 3/4" Pipe in Thimble

SE Cor., Sec. 2,
 T27S, R2E, 6th P.M.
 Find 3/4" Pipe in Thimble

SE Cor., Sec. 2,
 T27S, R2E, 6th P.M.
 Find 3/4" Pipe in Thimble