

# LATERAL 375, FOUR MILE CREEK SEWER SANITARY SEWER EXTENSION

LOT 2, MAPLE SHADE ADDITION

PROJECT NO. 468-83994

OCA # 744130

## GENERAL NOTES

Contractor will be required to provide a minimum advance notice of twenty-four (24) hours to utility companies prior to starting any excavation as follows:

Kansas One-Call 687-2470

The Contractor must notify the following in case of an emergency:

Cox Communications	262-0661
Kansas Gas Service	383-8600
K.G.E. Electric	383-8600
Southern Star Central Gas	640-7747
Southwestern Bell Telephone Company	1-800-286-8313
City of Wichita Water Department	262-6000
City of Wichita Sewer Maintenance	262-6000

Underground utility service lines and overhead utility pole lines are to be adjusted as necessary by others prior to construction unless the plans specifically call for their adjustment by the Contractor or unless the plans specifically identify a utility to be adjusted by its owner during construction. Existing utilities and their location, as shown on the plans, represent the best information obtainable for design. Location information has been obtained from the various utility companies and is either from company record drawings or company-provided field locations. The Contractor will be required to work around existing utilities within the right-of-way which do not conflict with proposed construction.

Rubble from the removal of miscellaneous structures and excess excavation which is to be wasted shall be disposed of on sites to be provided by the Contractor. These sites shall be approved by the Engineer as to suitability, appearance and site location. Locations that, in the opinion of the Engineer, will leave an unsightly appearance will not be approved.

All disposal sites must be approved by the Kansas Department of Health and Environment. Material either stockpiled or disposed of in a flood plain would require a Kansas State Board of Agriculture permit. Any material dumped in waters of the United States or wetlands is subject to U.S. Corps permitting regulations. Any material buried or stockpiled beyond approved of Engineers construction limits would require additional archeological investigations unless buried in a previously approved borrow location.

The Engineer shall take field ties to all quarter section corners. The Contractor shall set a City survey monument in the required location where such quarter section corners fall within the limits of pavement construction. Survey monuments will be furnished by the City. The Engineer will accurately locate and install the iron at the quarter section corner. This work will not be paid for directly, but shall be considered subsidiary to the other pay items of work in the contract.

The Contractor shall notify pipeline companies at least 24 hours in advance of any work being performed across and/or adjacent to pipelines.

The Contractor shall give all property owners and/or tenants of developed property directly abutting the construction of this project a minimum of ten (10) days advance notice prior to start of construction.

The Contractor shall seed, fertilize and mulch all disturbed areas upon completion of construction. Incidental to the bid item for "Site Clearing and Restoration".

Wilks Underground - Contractor  
Coykendall, City - Inspector  
Released 2/21/06  
As-Built  
Risers & Stubs  
pdf by JDL 4/10/06

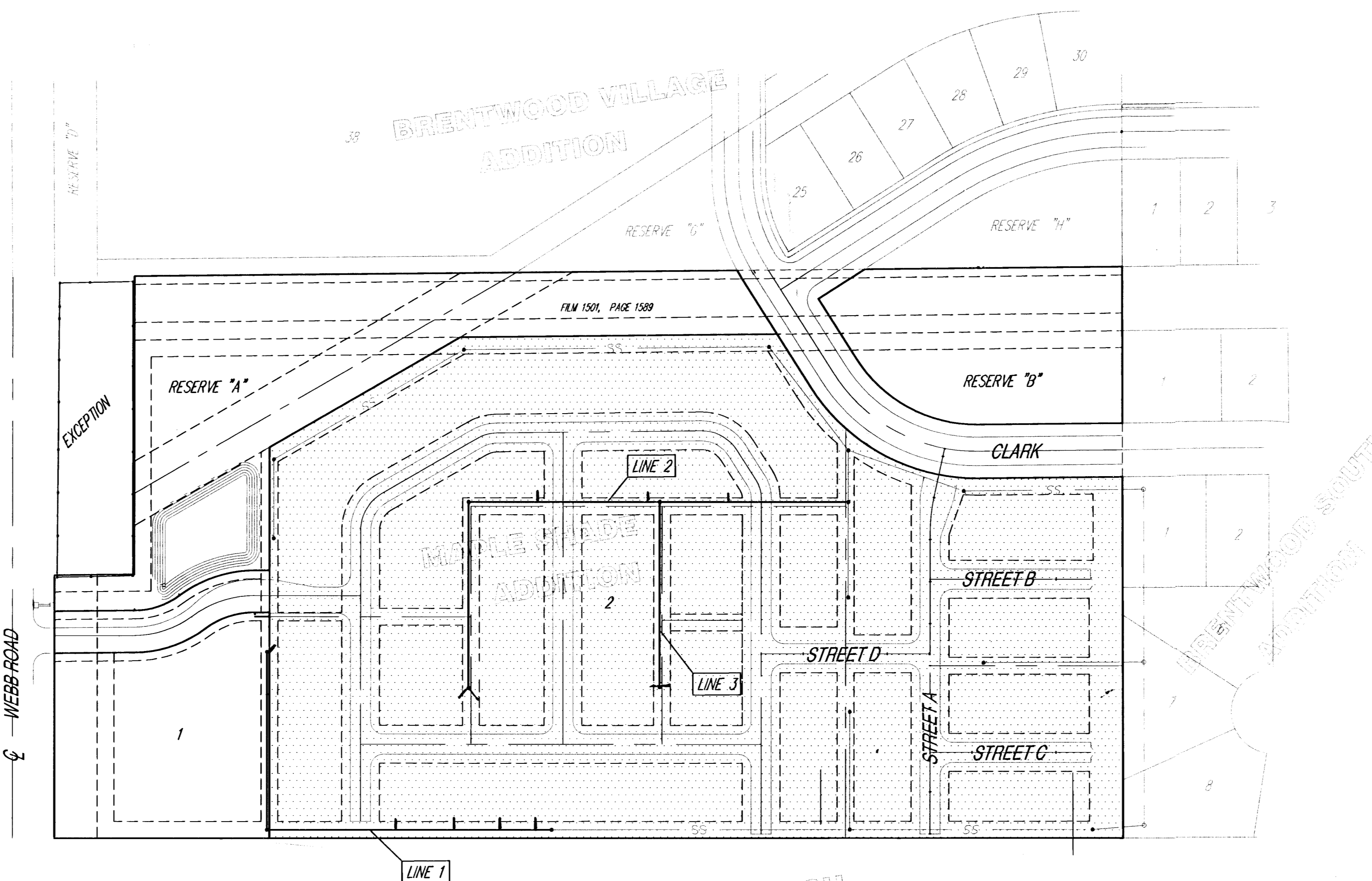
## BENCH MARKS

BENCH MARK #1: USGS BRASS PLUG 28' S. & 530' W. OF CENTERLINE INTERSECTION OF CAPRI & PAWNEE ELEV.=1386.25 NGVD

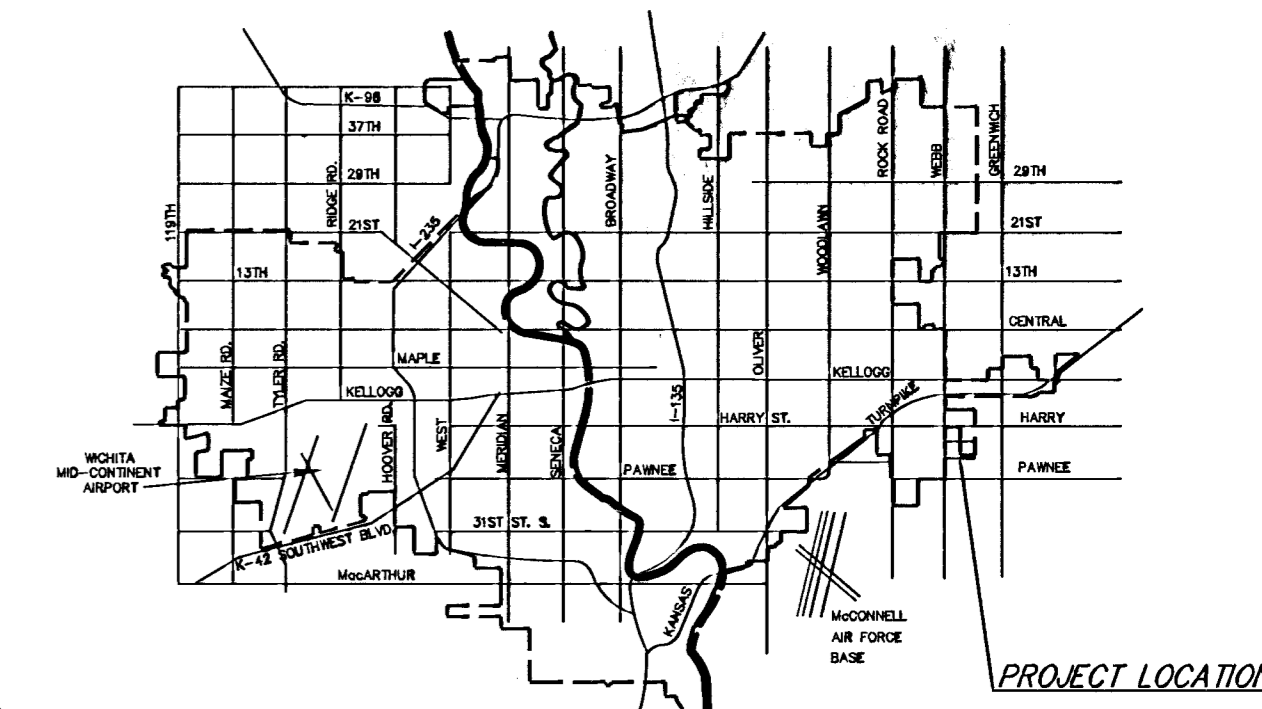
BENCH MARK #2: CITY OF WICHITA STD. DISC 20.8' W & 54.5' S. OF CENTERLINE INTERSECTION DALTON & PAWNEE ELEV.=1379.60

## INDEX OF SHEETS

1. COVER
- 2-3. SEWER PROFILES
4. EASEMENT GRADING
5. TYPE P MH DETAILS
6. RING AND COVER DETAILS
7. RISER DETAILS
8. BMP DETAILS
9. PLAT



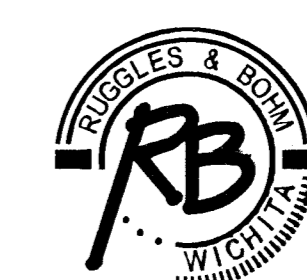
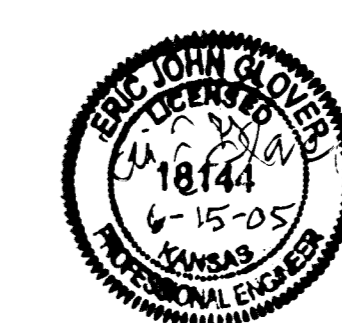
Scale: 1" = 100'



VICINITY MAP

IMPROVEMENT DISTRICT

CITY OF WICHITA, KANSAS  
JAMES ARMOUR, P.E. - CITY ENGINEER



Ruggles & Bohm, P.A.  
Engineering, Surveying, Land Planning  
924 North Main (316) 264-8008  
Wichita, Kansas 67203 (316) 264-4621 fax  
www.rbkansas.com E-mail: info@rbkansas.com