

GENERAL NOTES:

1. Contractor will be required to provide notice to utility companies a minimum of seventy-two (72) hours prior to any excavation, as follows:

- Kansas One-Call 687-2470
- The Contractor must notify the following in case of an emergency:
- Cox Communications 262-4270
 - Kansas Gas Service 1-888-482-4950
 - Westar Energy 383-8650
 - Aquila Energy 1-800-303-0357
 - AT&T 268-2245
 - City of Wichita Water Dept. 219-8921
 - City of Wichita Sewer Maint. 268-4024
 - City of Wichita Storm Sewer Maint. 268-4090
 - City of Wichita Traffic Maint. 268-4034
 - Conoco Phillips Pipeline Co. 1-877-267-2290
 - Southern Star Pipeline Co. 529-6600
 - Kinder-Morgan Pipeline Co. 1-888-844-5658

2. Utility service lines, poles, valve boxes, meters, and etcetera are to be adjusted as necessary by others prior to construction unless the plans specifically call for their adjustment by the Contractor or unless the plans specifically identify a utility to be adjusted by its owner during construction. Existing utilities and their location, as shown on the plans, represent the best information obtainable for design. The Contractor will be required to work around existing utilities within the right-of-way which do not conflict with proposed construction.

3. Rubble from the removal of miscellaneous structures and excess excavation which is to be wasted shall be disposed of on sites to be provided by the Contractor. These sites shall be approved by the Engineer as to suitability, appearance and site location. Locations, in the opinion of the Engineer, that will leave an unsightly appearance will not be approved. All disposal sites must be approved by the Kansas Department of Health and Environment. Material either stockpiled or disposed of in a flood plain would require a Kansas State Board of Agriculture permit. Any material dumped in waters of the United States or wetlands is subject to U.S. Corps of Engineers permitting regulations. Any material buried or stockpiled beyond approved construction limits would require additional archaeological investigations unless buried in a previously approved borrow location.

4. Trees and shrubs in public right-of-way which are in direct conflict with proposed new construction shall be removed by the Contractor with the Engineer's approval. Trees and shrubs which are not in direct conflict with proposed new construction shall be saved and protected from damage.

5. The Contractor shall give all property owners and/or tenants of developed property abutting the construction of this project a minimum of ten (10) days notice prior to start of construction.

6. The Contractor shall be responsible for preserving property irons. The Contractor will be required to re-establish any property irons which are damaged or destroyed by his construction operations. Such irons shall be re-established by a licensed land surveyor in accordance with state laws.

7. All existing and proposed erosion control measures including silt fencing, erosion control mat, straw bales, inlet barriers, and const. entrance shall be maintained throughout construction by the contractor and until project is accepted by the City of Wichita. The on-site engineer shall complete weekly reports on the status of erosion control measures. The contractor shall be required to comply with maintenance and/or replacement of erosion control measures as determined by the on-site engineer until project is accepted by City of Wichita. Maintenance and/or replacement of erosion control measures to be paid by L.S. bid item "Maintain Existing BMP's."

8. All excess excavation shall remain on-site and shall be stockpiled or spread at a location determined by the engineer.

9. The Contractor shall be responsible for maintaining continuous flow of sewage through construction. Contractor's proposed method for maintaining sewage flow shall be approved by the Engineer. Cost of maintaining flow of sewage through construction will not be paid for directly and this cost shall be considered as subsidiary to the other pay items of work.

10. All areas disturbed during construction shall be seeded as follows (Temporary Seeding):

Seed: Rye grass (PLS)--5 lbs./1000 Sq. Ft.

All costs associated with seeding shall be included in bid item "Seeding". All seeding operations shall conform to City of Wichita Standard Specifications.

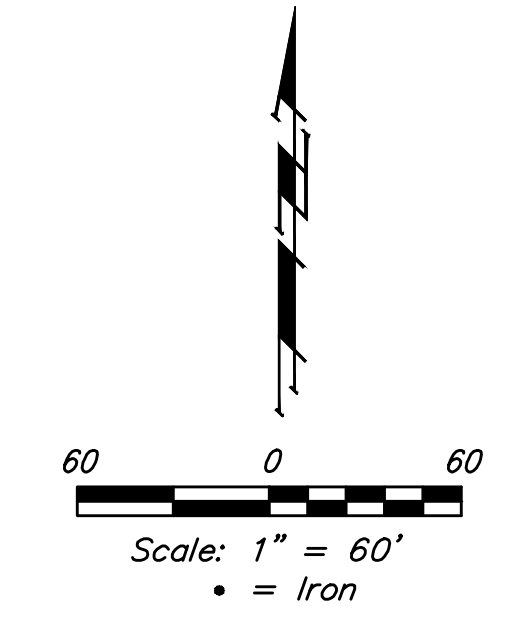
11. Trees and shrubs in the work area which are in direct conflict with proposed new construction shall be removed by the Contractor ONLY with the Developer or Baughman Company approval. Trees and shrubs which are not in direct conflict with proposed new construction shall be saved and protected from damage. If trimming is necessary, a chainsaw shall be used. Breaking limbs with equipment will not be allowed. An on-site pre-construction meeting will occur prior to any construction to discuss tree removal, tree protection, and tree trimming.

12. The Developer for this project is Jay Russell
P.O. Box 75337
Wichita, KS 67272
(316)990-2105
j@russellco.com

SANITARY SEWER IMPROVEMENTS to serve EDGE WATER 4TH ADDITION CITY OF WICHITA, KANSAS

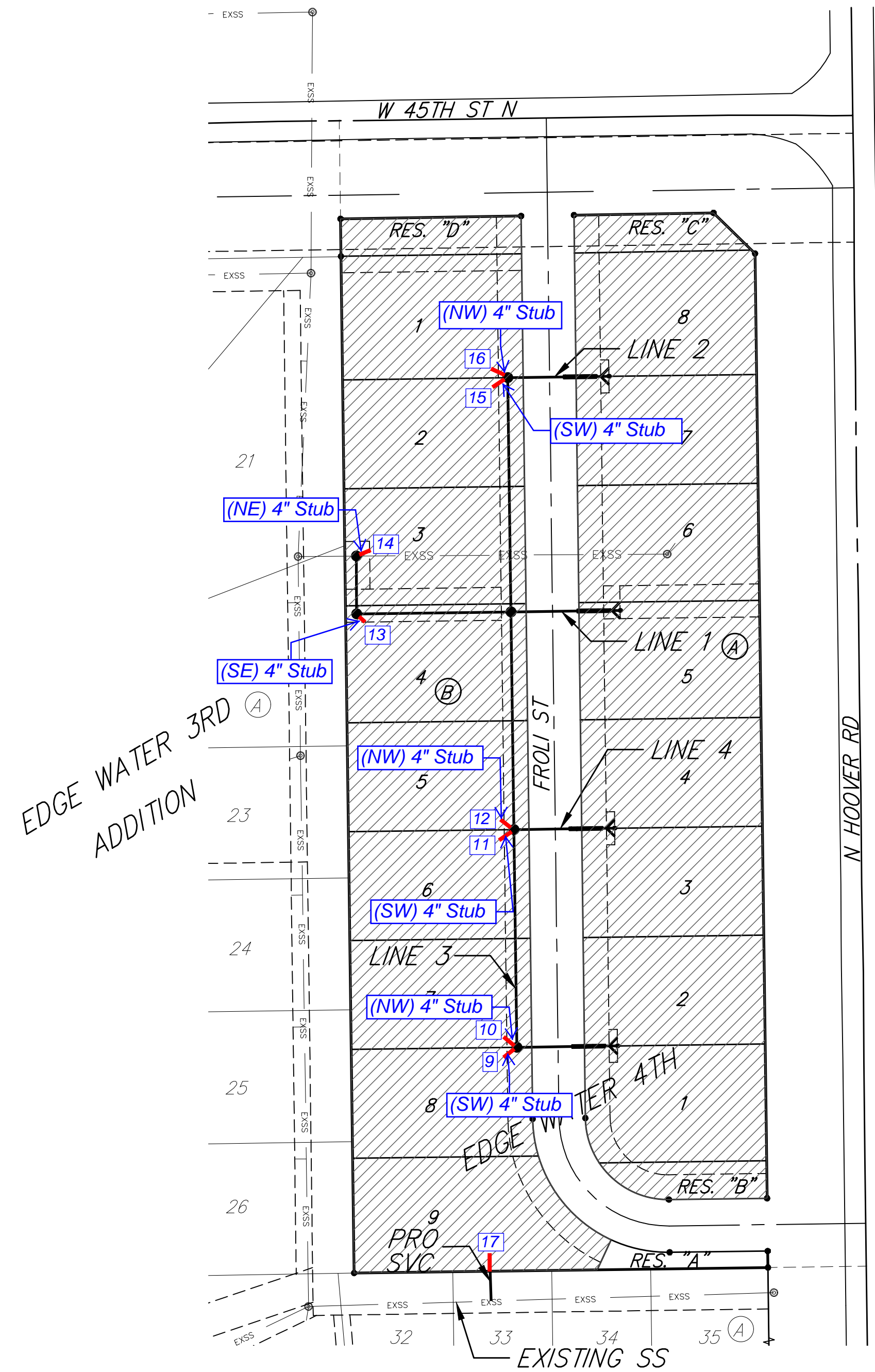
Gary Janzen, P.E. City Engineer
Project Number 468-2020-012801
OCA Number 810089

Nowak Construction - Contractor
B. Woods - City of Wichita, Field Project Engineer
L. Powell - Baughman, Inspector
As-built
Stubs & Risers
Release Date (for connection purposes only): 5/19/2021
Completion Date: 11/24/2021
pdf: 5/17/2021 apr



SHEET INDEX

Title Sheet	1
Line 1 & 2	2
Line 3 & 4	3
Proposed Sewer Main Service	4
Erosion Control Plan	5
Erosion Control BMP Details	6-10
Ring & Cover Detail	11
Vertical Riser Detail	12
Cleanout Detail	13
Coordinate Sheet	14
Copy of Plat	15
	16

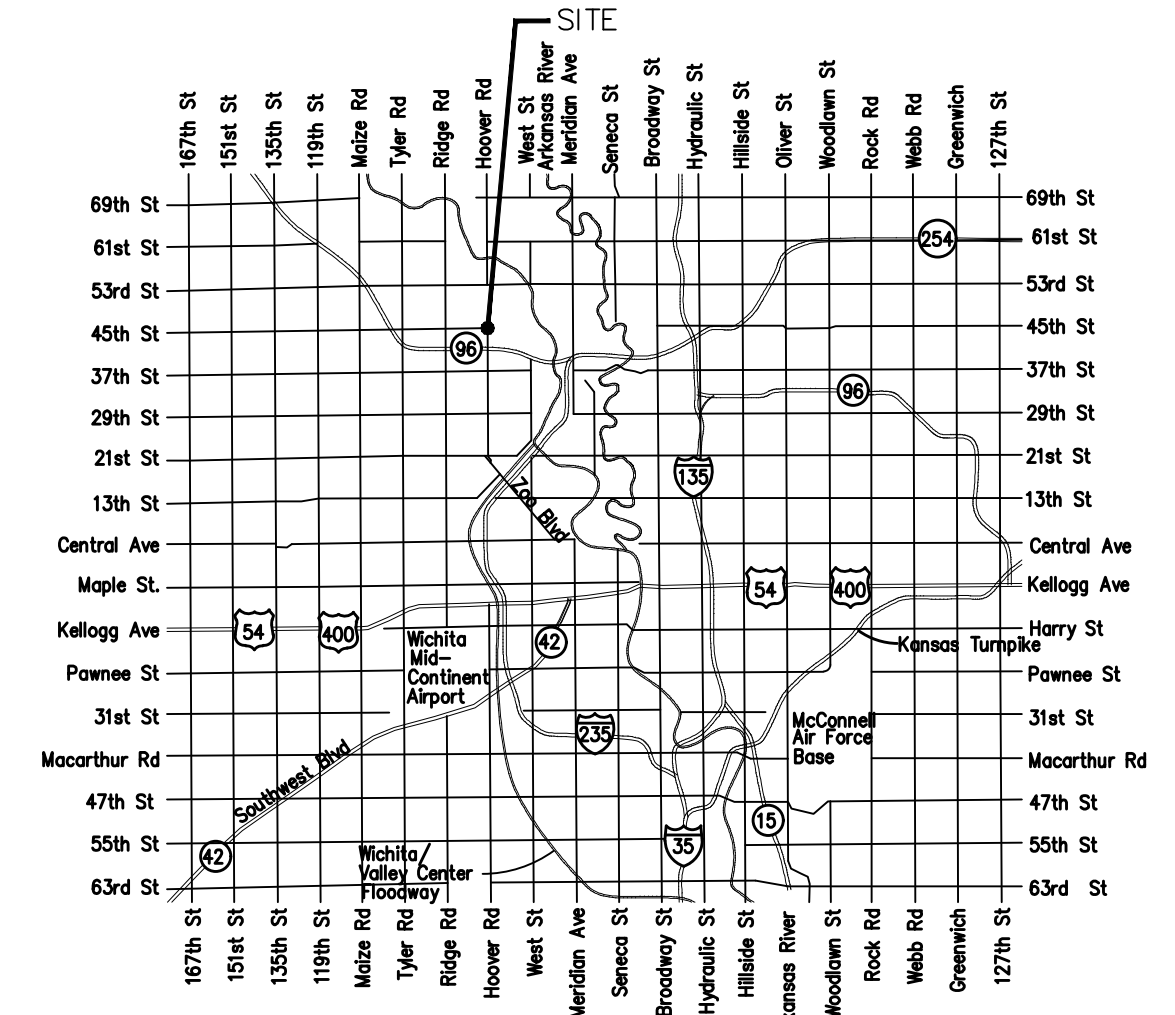
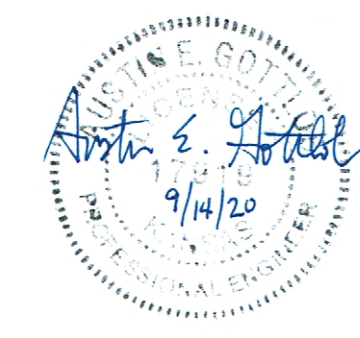


BENCHMARKS

disk adjacent to fire hydrant in SW corner of Lot 22 BLK A, Edgewater 3rd Addition
Elev. = 1,337.95 NGVD29

rail road spike in N face of power pole E of Lot 3 BLK A, Edgewater 4th Addition
Elev. = 1,336.93 NGVD29

BENEFIT DISTRICT



VICINITY MAP

Baughman ENGINEERING | SURVEYING | PLANNING | LANDSCAPE ARCHITECTURE
Baughman Company, P.A. 315 Ellis St. Wichita, KS 67211 P 316-262-7271 F 316-262-0148

Sanitary Sewer Riser Location Table

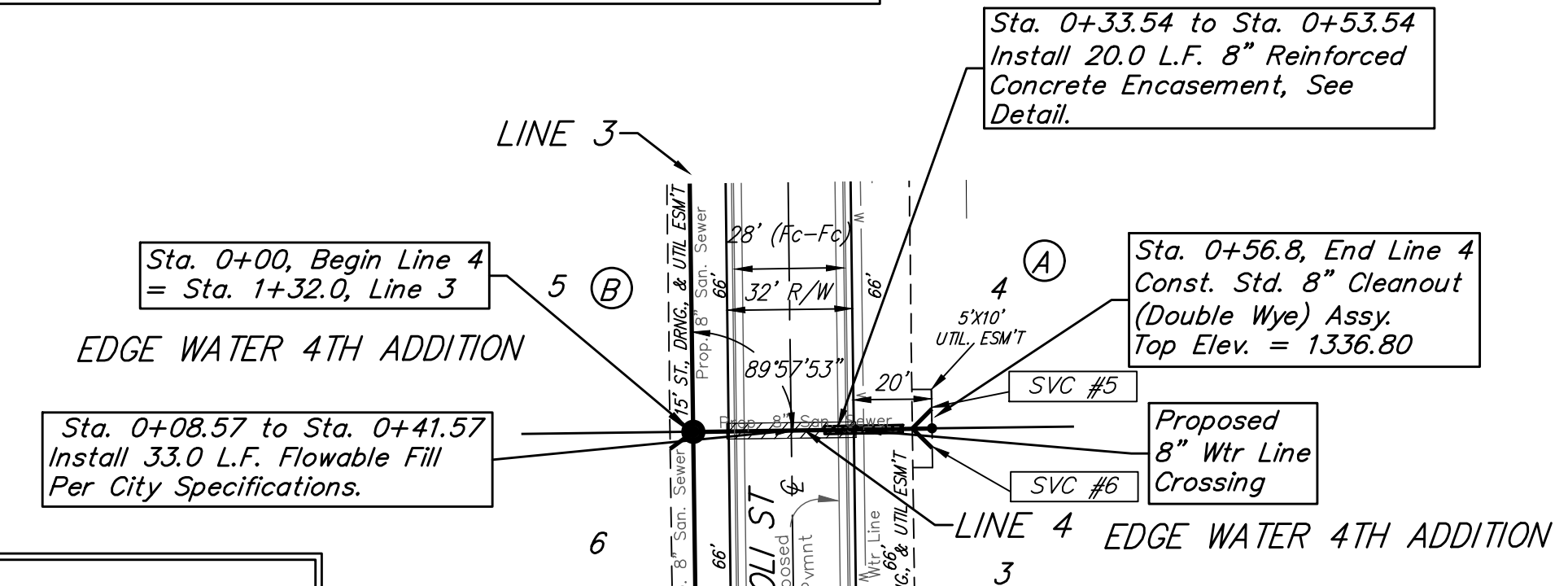
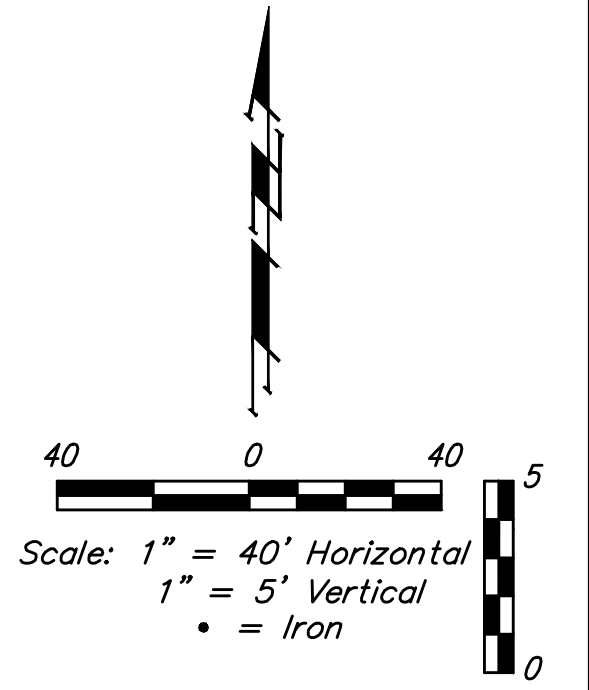
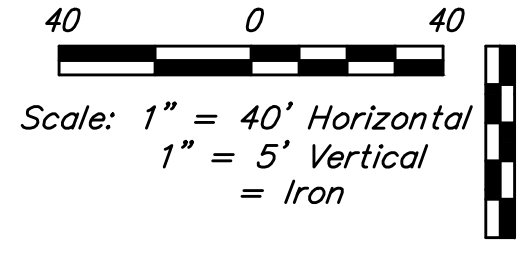
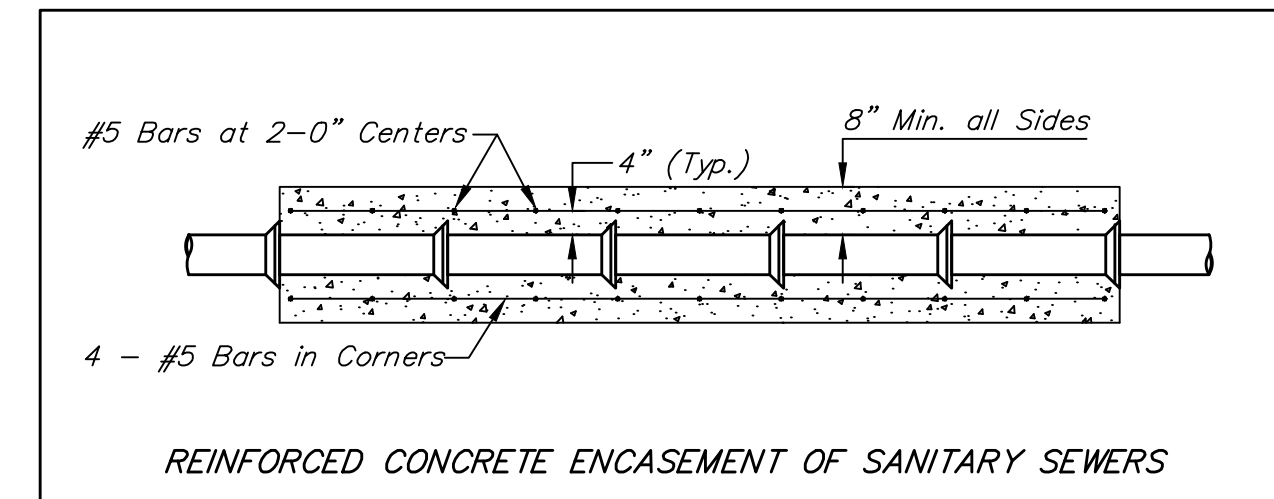
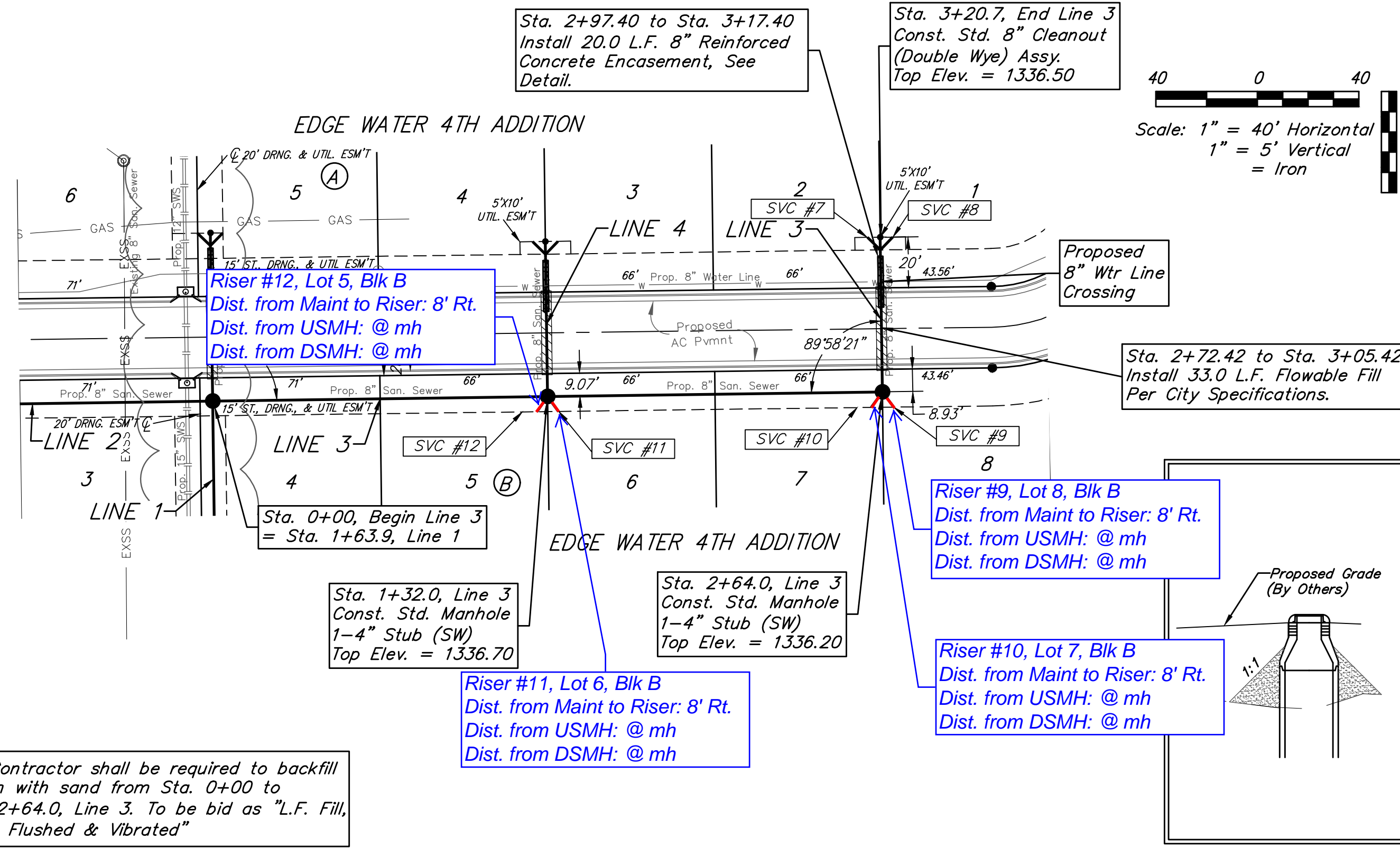
Project Name: Edge Water 4TH Addition
 Project Location: S.W.C. 45TH St. N. & Hoover Road
 Project No.: 468-2020-012801
 OCA No.: 810089
 Contractor: Nowak Construction
 Inspector: Larry Powell (Baughman Co.)

Riser No.	Line No.	Station	Distance From Main to Riser (Lt./Rt.)	Distance From	
				Upstream MH	Downstream MH
1	2	1+99.1	8'-Lt.	NE stub@CO	CO
2	2	1+99.1	7'- Lt. Rt.	SE stub@CO	CO
3	1	2+25.9	8'-Lt.	NE stub@CO	CO
4	1	2+25.9	7'-Rt.	SE stub@CO	CO
5	4	0+56.8	8'-Lt.	NE stub@CO	CO
6	4	0+56.8	7'-Rt.	SE stub@CO	CO
7	3	3+20.7	9'-Lt.	NE stub@CO	CO
8	3	3+20.7	7'-Rt.	SE stub@CO	CO
9	3	2+64.0	8'-Rt.	SW stub@MH	MH
10	3	2+64.0	8'-Rt.	NW stub@MH	MH
11	3	1+32.0	8'-Rt.	SW stub@MH	MH
12	3	1+32.0	8'-Rt.	NW stub@MH	MH
13	1	0+70.3	7'-Rt.	SE stub@MH	MH
14	1	0+35.2	9'-Lt.	NE stub@MH	MH
15	2	1+42.0	7'-Lt.	SW stub@MH	MH
16	2	1+42.0	7'-Lt.	NW stub@MH	MH
17	EX. SS	1+20	24'-Lt. (stub @ saddle)	162' East	120' West

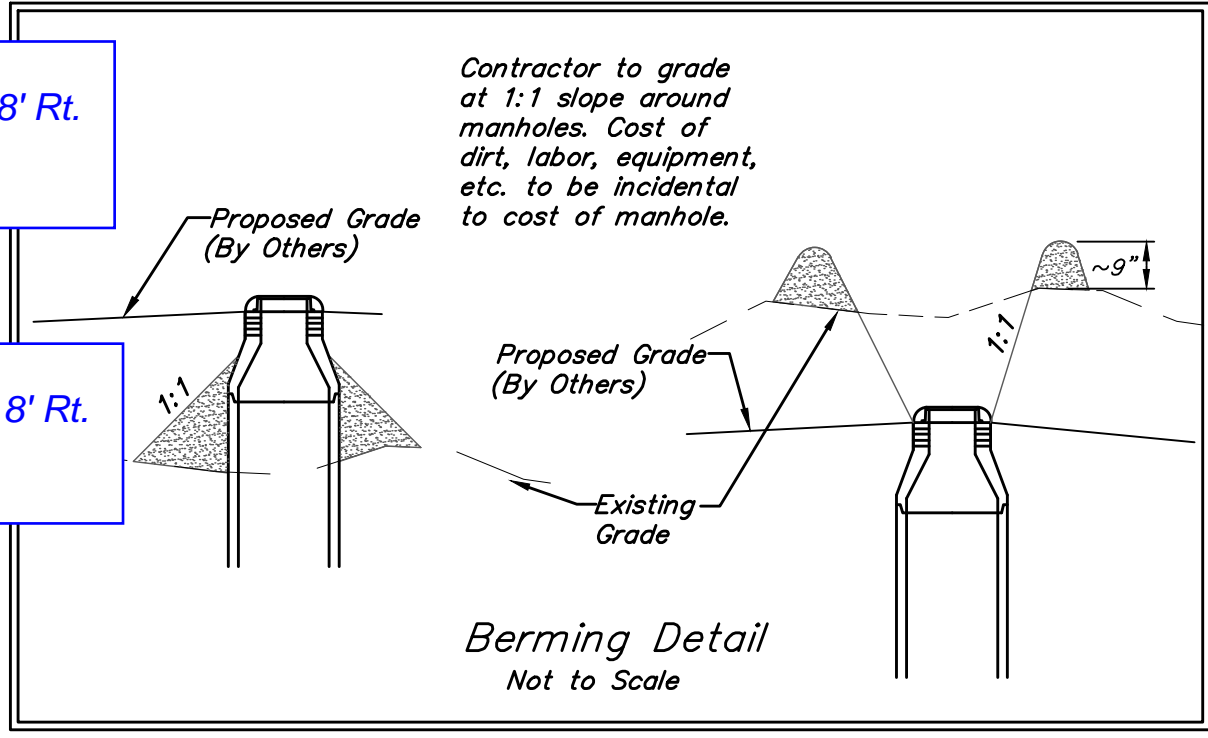
Note: CO = Clean Out MH = Manhole 3-1-21

BENCHMARKS:
 disk adjacent to fire hydrant in SW corner of Lot 22 BLK A, Edgewater 3rd Addition
 Elev. = 1337.95 NGVD29

rail road spike in N face of power pole
 E of Lot 3 BLK A, Edgewater 4th Addition
 Elev. = 1336.93 NGVD29



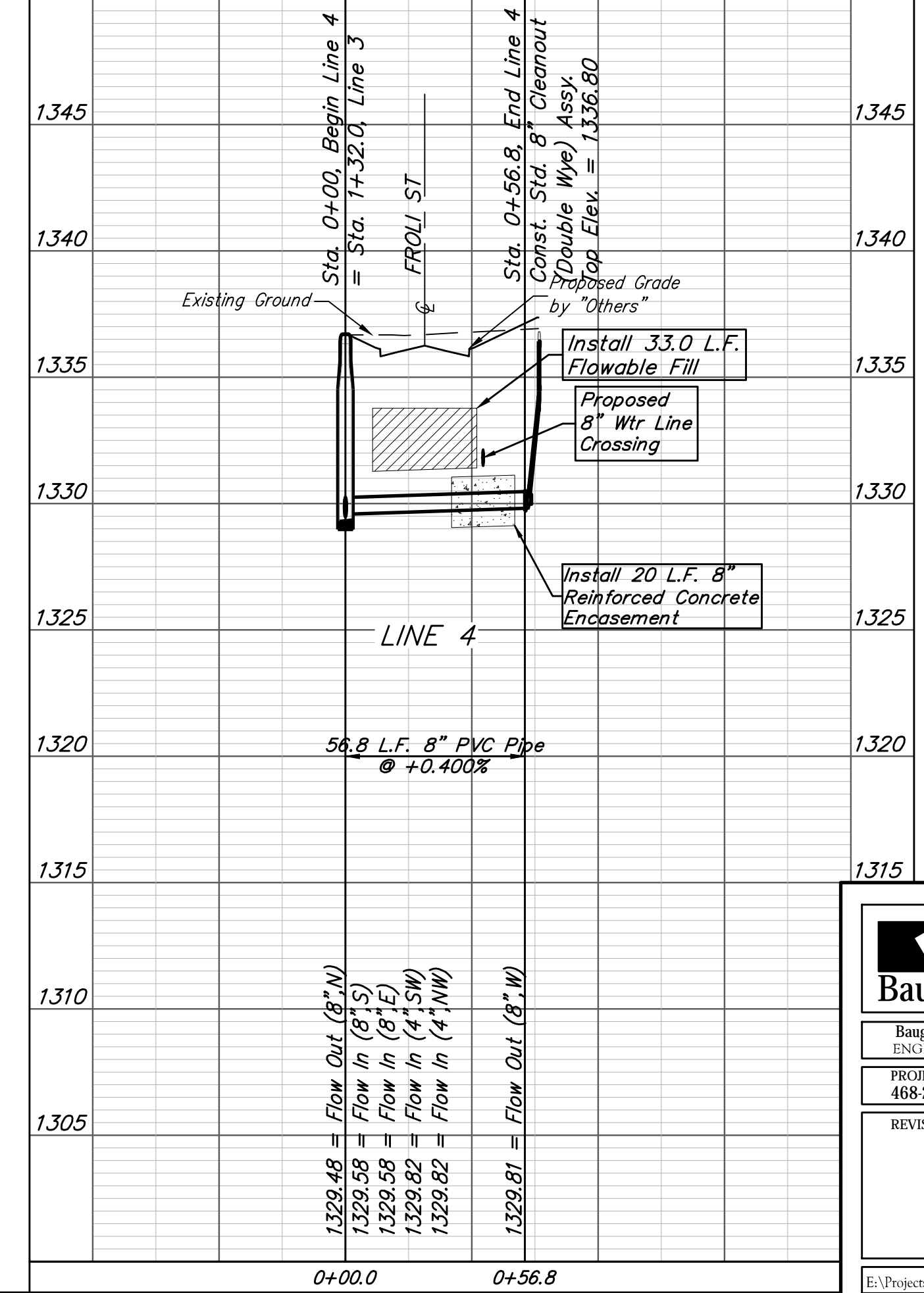
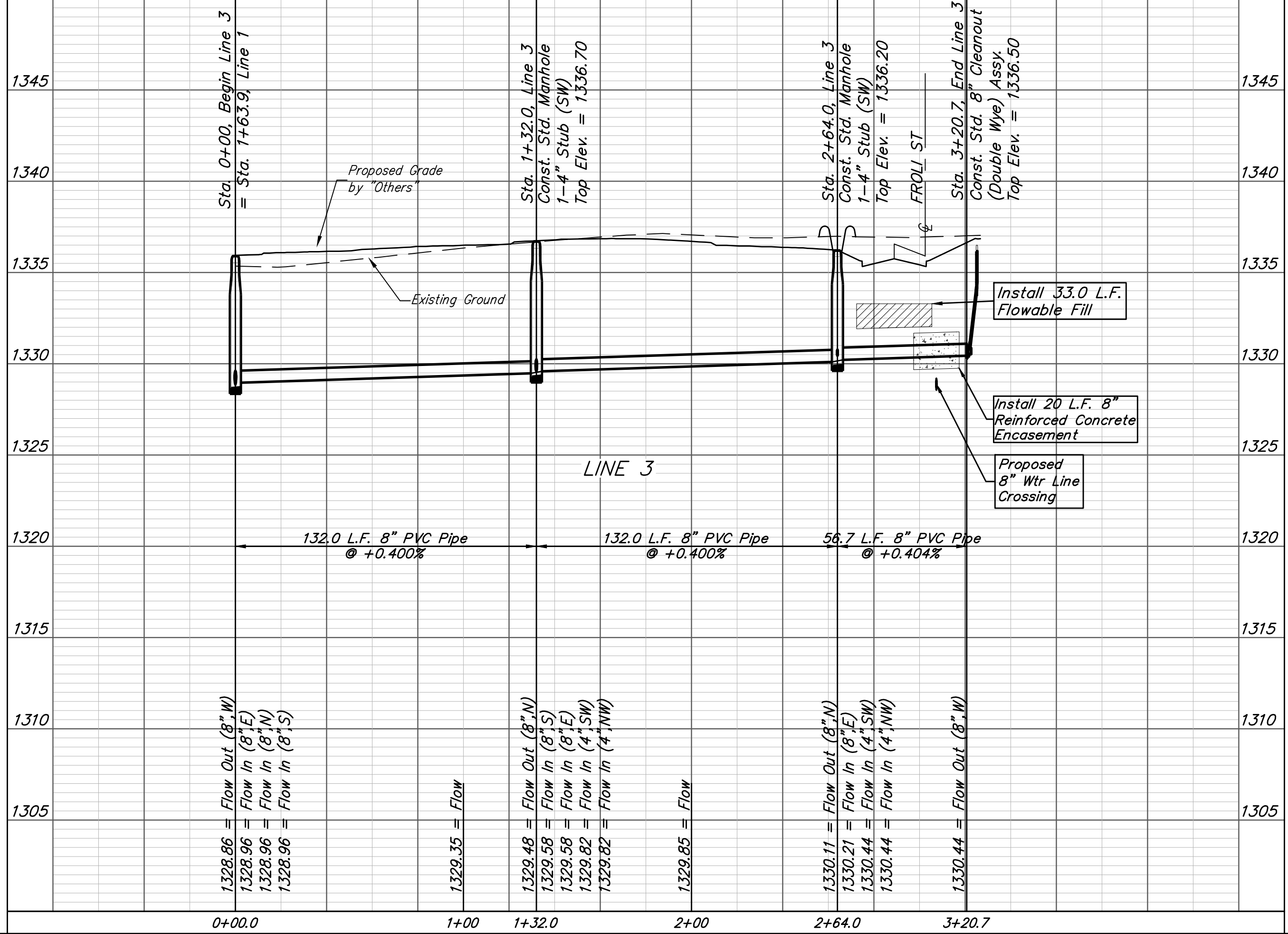
The Contractor shall be required to backfill trench with sand from Sta. 0+00 to Sta. 2+64.0, Line 3. To be bid as "L.F. Fill, Sand, Flushed & Vibrated"



SEWER SERVICE TABLE

NUMBER	TYPE	LOCATION			FOR INFORMATION ONLY	
		LOT NO.	BLOCK NO.	LINE NO.	STATION/ DIRECTION	APPROXIMATE LENGTH 4" PIPE
5	WYE Ext	4	A	4	0+56.8/Lt.	2' 8'
6	WYE Ext	3	A	4	0+56.8/Rt.	2' 7'
7	WYE Ext	2	A	3	3+20.7/Lt.	1' 9'
8	WYE Ext	1	A	3	3+20.7/Rt.	1' 7'
9	4" Stub	8	B	3	2+64.0/Rt.	1' 8'
10	4" Stub	7	B	3	2+64.0/Rt.	1' 8'
11	4" Stub	6	B	3	1+32.0/Rt.	3' 8'
12	4" Stub	5	B	3	1+32.0/Rt.	3' 8'

NOTE: Vertical Riser Pipe shall be extended to 2' minimum above ground water elevation and 4' maximum below proposed ground elevation.



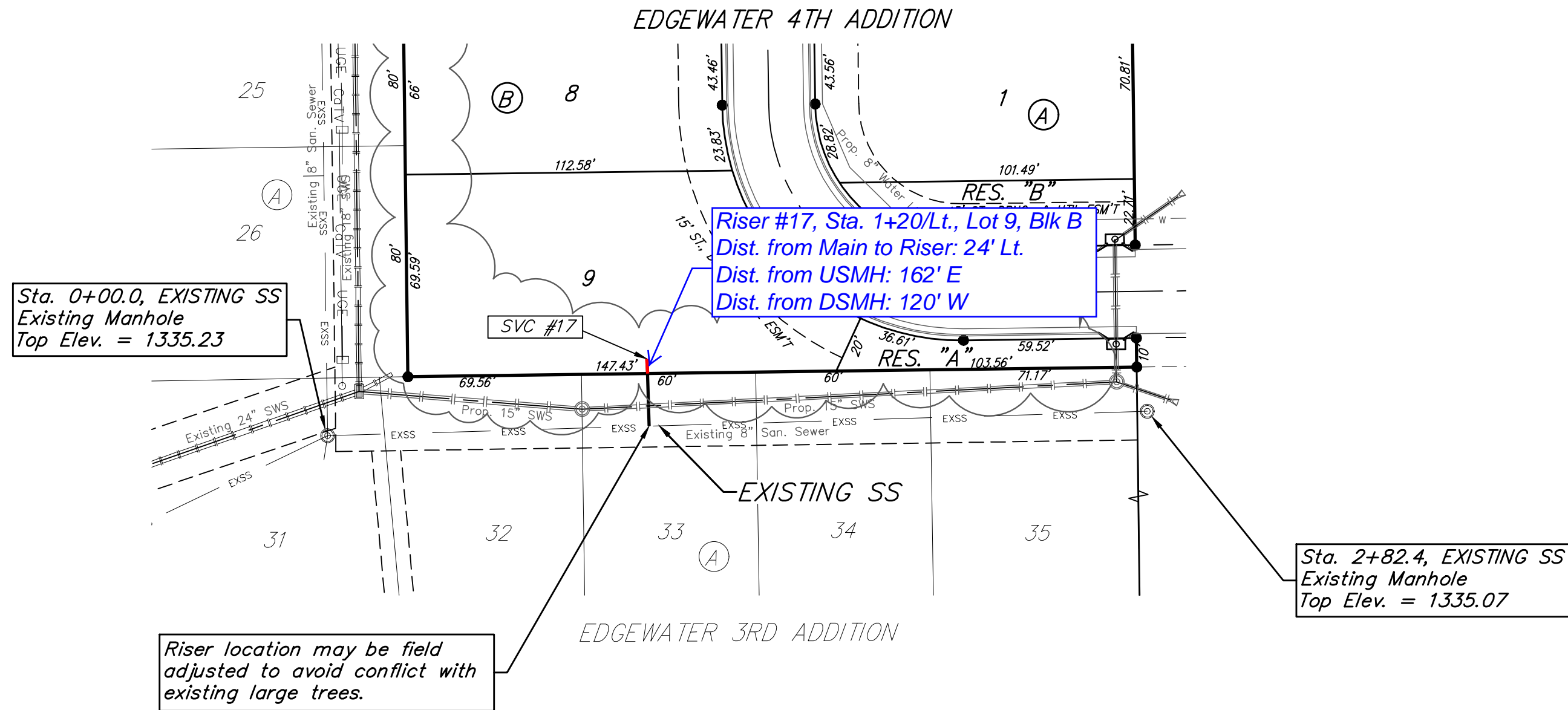
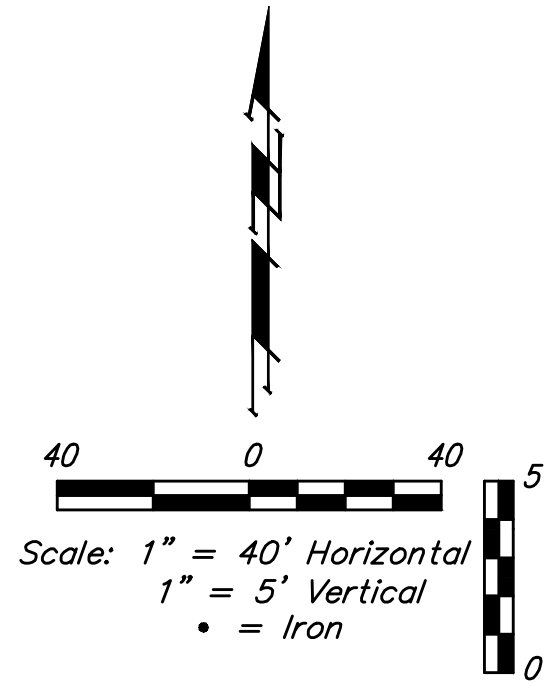
Baughman Edge Water 4th Addition
LINE 2 & 3
 Sanitary Sewer Improvements

Baughman Company, P.A. 315 Ellis St. Wichita, KS 67211 P 316-262-7271 F 316-262-0149
 ENGINEERING | SURVEYING | PLANNING | LANDSCAPE ARCHITECTURE

PROJECT NUMBER: 468-2020-012801
 DESIGN: AEG
 DRAWN: CDW
 APPROVED: [Signature]
 DATE: 09/09/20
 SCALE: Noted
 SHEET: 3 OF 16

REVISIONS:

BENCHMARKS:
 disk adjacent to fire hydrant in SW corner of Lot 22 BLK A, Edgewater 3rd Addition
 Elev. = 1337.95 NGVD29
 rail road spike in N face of power pole E of Lot 3 BLK A, Edgewater 4th Addition
 Elev. = 1336.93 NGVD29

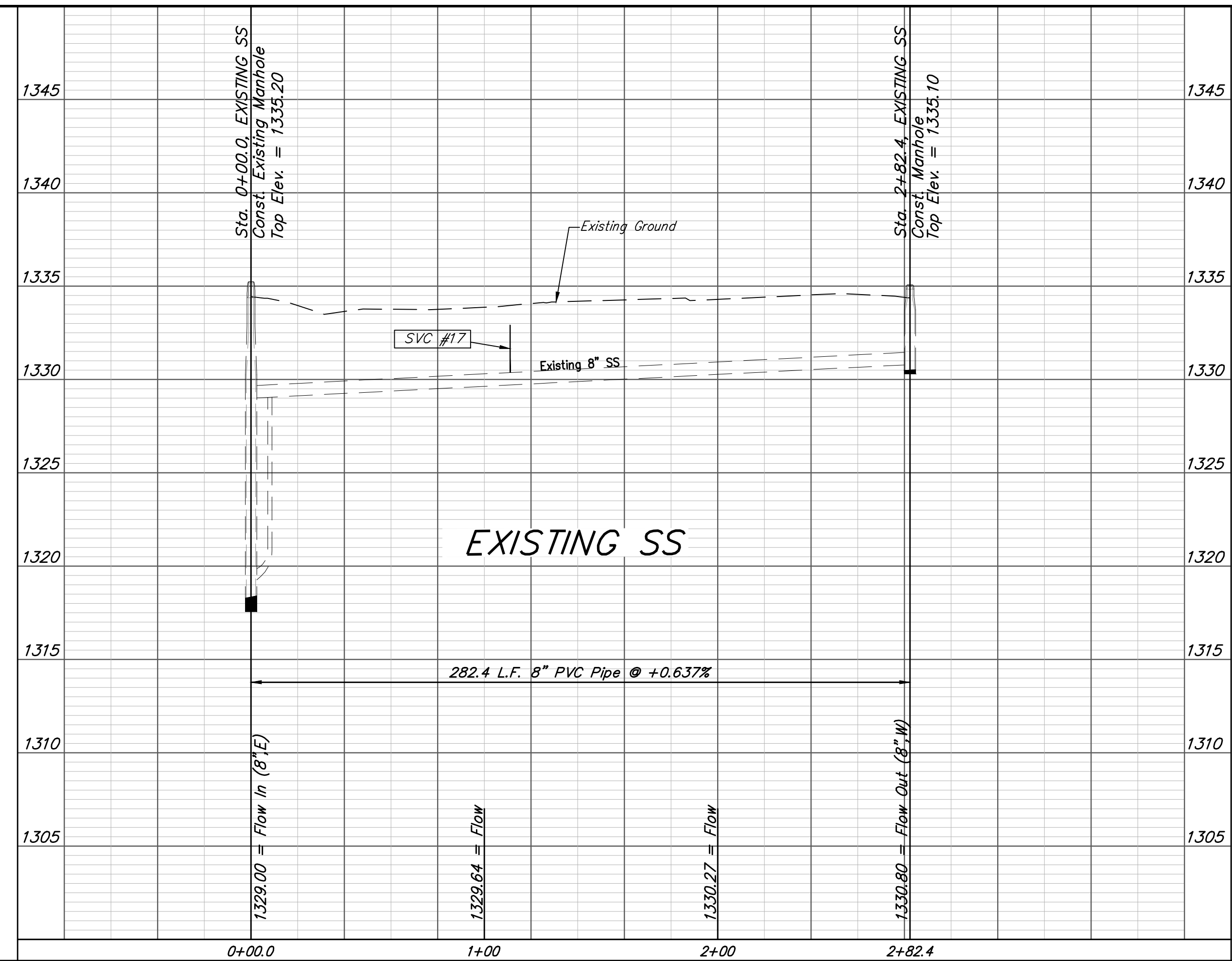


Note: Remove Existing Trees Only As Necessary for Construction. Do not Replace. Cost included in "Site Clearing" bid item.

SEWER SERVICE TABLE

NUMBER	TYPE	LOCATION				FOR INFORMATION ONLY	
		LOT NO.	BLOCK NO.	LINE NO.	STATION/DIRECTION	APPROXIMATE LENGTH 4" PIPE VERTICAL	HORIZONTAL
17	8" x 4" Saddle Tee	9	B	EX. SS	++1+0/Lt. 1+20/Lt.	0'	24'

NOTE: If vertical length is greater than zero, vertical Riser Pipe shall be extended to 2' minimum above ground water elevation and 4' maximum below proposed ground elevation.



Baughman Edge Water 4th Addition
PRO. SERVICE
 Sanitary Sewer Improvements

Baughman Company, P.A. 315 Ellis St. Wichita, KS 67211 P 316-262-7271 F 316-262-0149
 ENGINEERING | SURVEYING | PLANNING | LANDSCAPE ARCHITECTURE

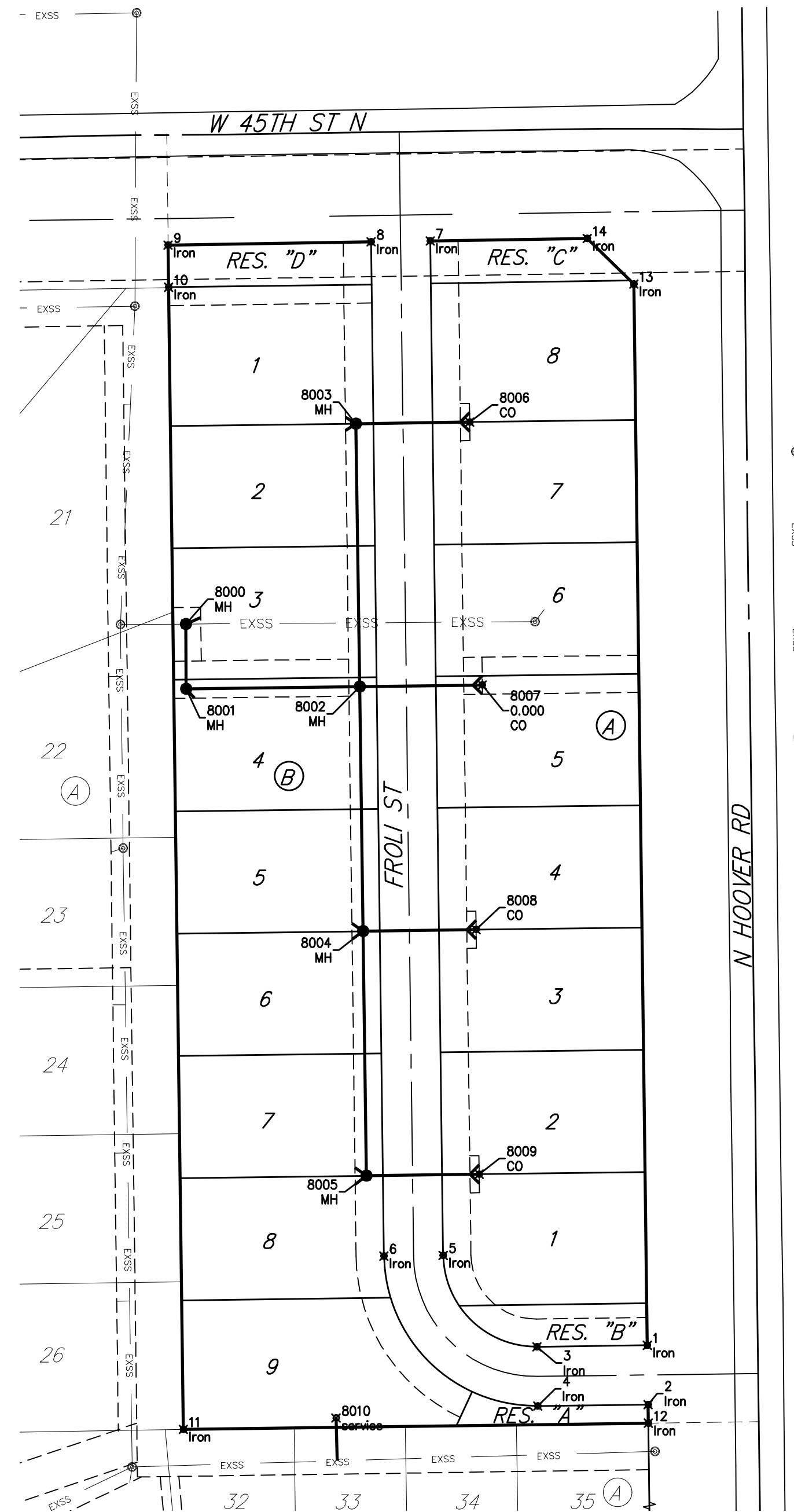
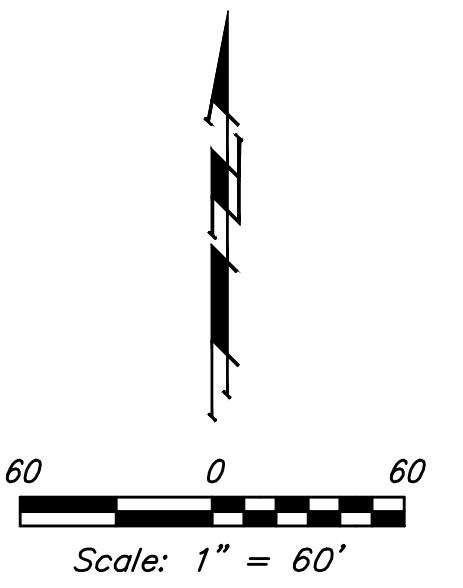
PROJECT NUMBER 468-2020-012801	DESIGN AEG	DRAWN CDW
REVISIONS:	APPROVED	DATE 09/09/20
	SCALE Noted	SHEET

4 OF 16

E:\Projects\Edge Water 4th Add_20-01-PS13\Engineering\Phase 1\SS_20-04-E555\SS PLANS.dwg

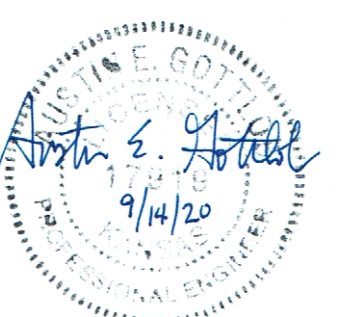
BENCHMARKS:
 disk adjacent to fire hydrant in SW
 corner of Lot 22 BLK A, Edgewater 3rd Addition
 Elev. = 1337.95 NGVD29

rail road spike in N face of power pole
 E of Lot 3 BLK A, Edgewater 4th Addition
 Elev. = 1336.93 NGVD29



Coordinates			
Point	Northing	Easting	Desc
1	34,460.49	50502.55	Iron
2	34,428.49	50502.96	Iron
3	34,459.69	50443.01	Iron
4	34,427.69	50443.44	Iron
5	34,509.05	50392.35	Iron
6	34,508.64	50360.35	Iron
7	35,056.59	50385.39	Iron
8	35,056.08	50353.39	Iron
9	35,054.32	50243.89	Iron
10	35,031.62	50244.18	Iron
11	34,415.13	50252.12	Iron
12	34,418.49	50503.08	Iron
13	35,033.30	50495.26	Iron
14	35,057.95	50470.11	Iron

Coordinates			
Point	Northing	Easting	Desc
8000	34,849.82	50253.39	MH
8001	34,814.78	50253.62	MH
8002	34,815.96	50347.23	MH
8003	34,957.95	50345.27	MH
8004	34,683.98	50349.05	MH
8005	34,551.99	50350.87	MH
8006	34,958.83	50406.63	CO
8007	34,816.88	50413.44	CO
8008	34,684.86	50410.12	CO
8009	34,552.86	50411.79	CO
8010	34,421.23	50334.49	service



	Edge Water 4th Addition	
	COORDINATES	
Sanitary Sewer Improvements		
<small>Baughman Company, P.A. 315 Ellis St. Wichita, KS 67211 P 316-262-7271 F 316-262-0149 ENGINEERING SURVEYING PLANNING LANDSCAPE ARCHITECTURE</small>		
PROJECT NUMBER 468-2020-012801	DESIGN AEG	DRAWN CDW
REVISIONS:	APPROVED	DATE 09/09/20
	SCALE Noted	SHEET
	15 OF 16	