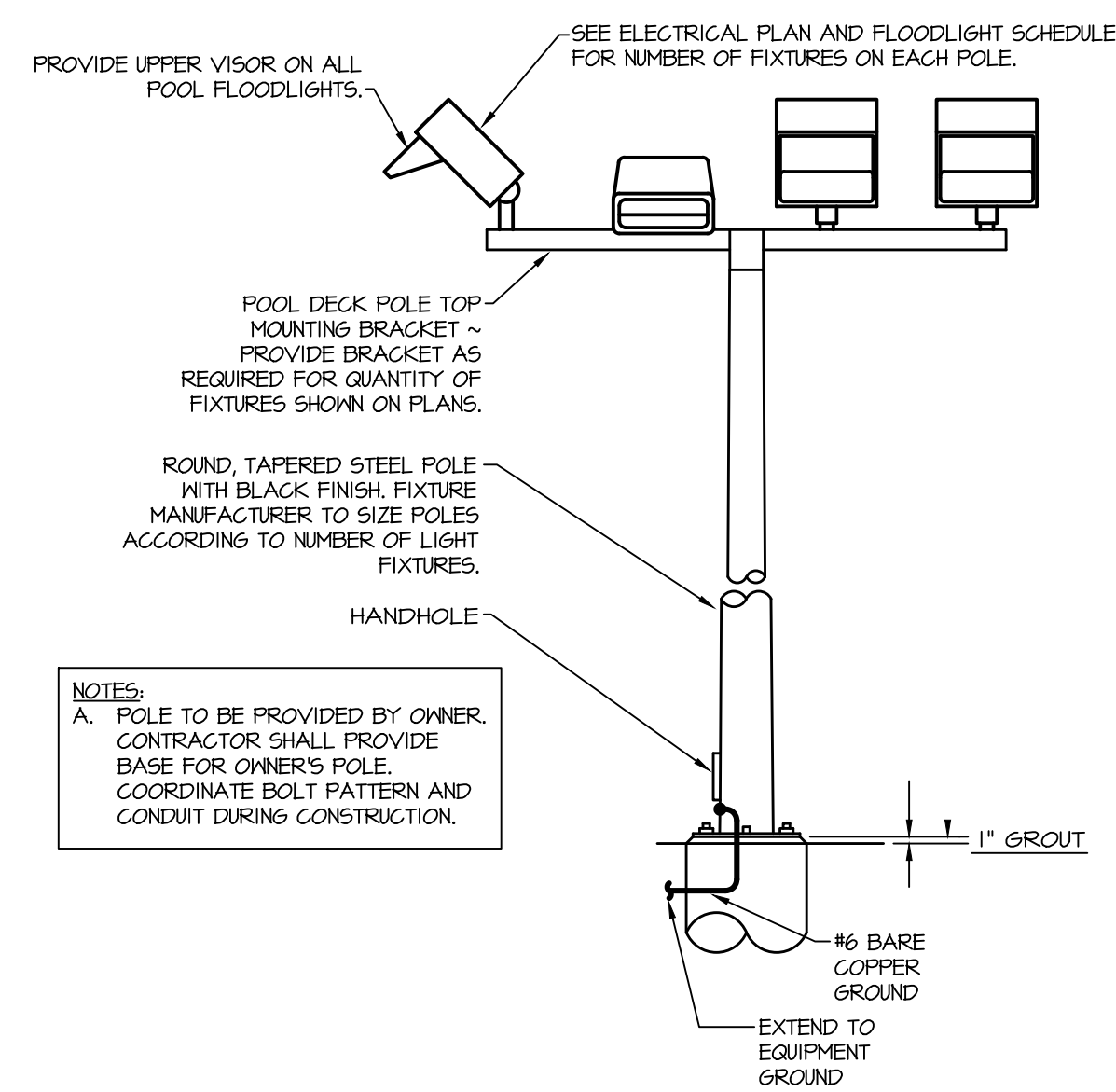
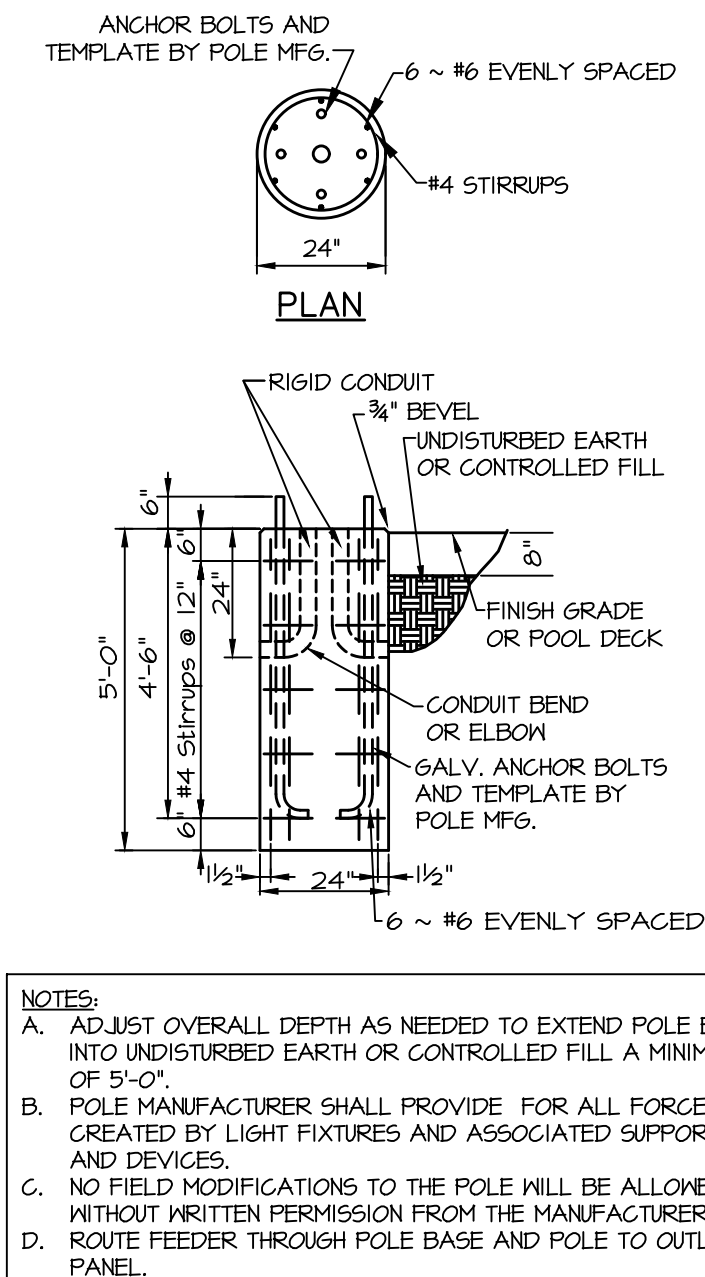


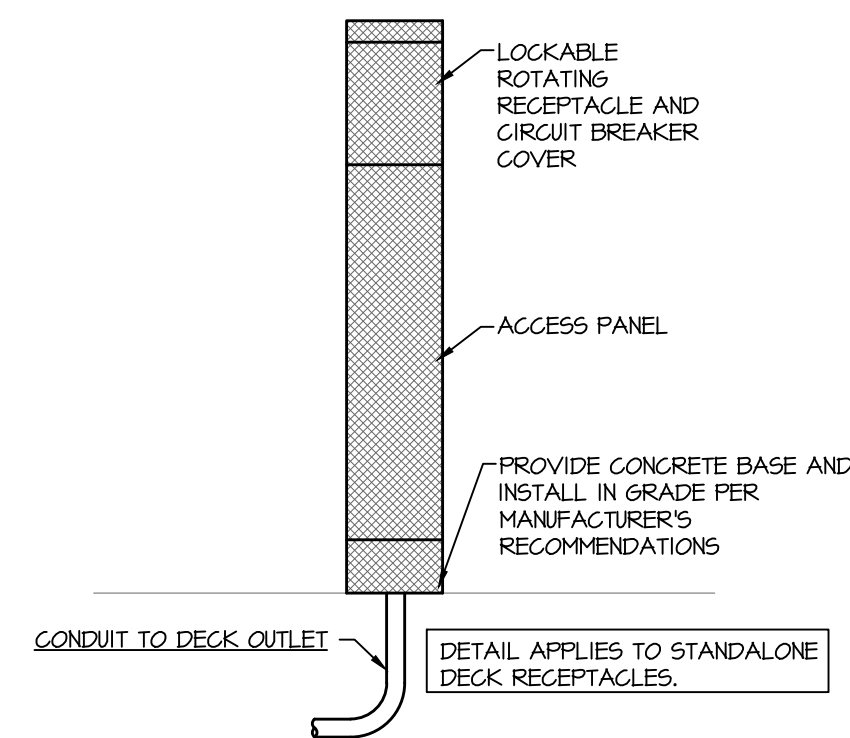
2 Equipotential Bonding Schematic
Scale: None



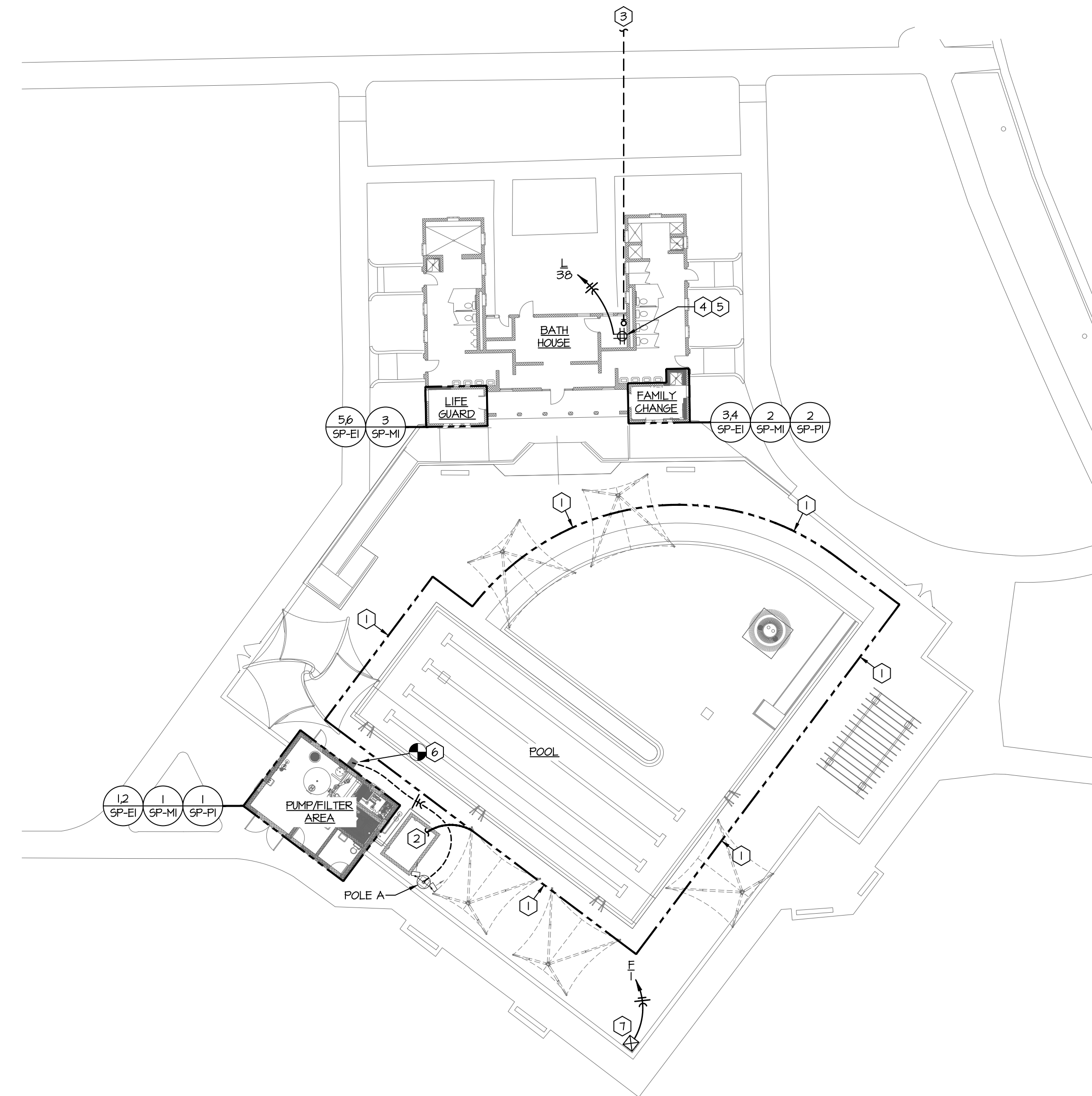
4 Pool Floodlight Pole Detail
Scale: None



3 Pool Floodlight Pole Base Detail
Scale: None



5 Pedestal Deck Receptacle Detail
Scale: None



1 MEP Site Plan
Scale: 1" = 20'-0"

FLOODLIGHT FIXTURE SCHEDULE															
POLE	MANUF.	MODEL	340W HEADS	600W HEADS	TOTAL HEADS	BALLAST TYPE	VOLTS	MOUNTING	EMERG BUTTON	DECK RCPT	SPEAKER HOLE	MIC HOLE	ANTENNA HOLE	TOTAL WATTS	NOTES
A	LITHONIA	HLFI-P4-40K-WFL-1VOLT-15-UBV	2	0	2	ELECTRONIC	UNV	POLE MOUNTED	NO	NO	NO	NO	NO	680	-

NOTES:

GENERAL NOTES (APPLIES TO ALL ABOVE):

A. FLOODLIGHT HEADS TO BE YOKE MOUNTED ON 30" POLES. POLES SHALL BE BLACK IN COLOR, CONSULT POOL DESIGNER TO VERIFY COLOR PRIOR TO ORDERING.

B. ALL FLOODLIGHTS ON POLE SHALL HAVE MANUFACTURER'S UPPER VISOR.

C. FIXTURES SHALL BE AIMED AT 45 DEGREES DOWN FROM THE HORIZONTAL PLANE.

D. 340W HEADS ARE SECURITY FIXTURES.

GENERAL NOTES:

THE FOLLOWING NOTES SHALL APPLY TO ALL WORK SHOWN ON SHEETS SP-ME1, SP-ME2, SP-MI, SP-PI, SP-EI, SP-E2, AND SP-E3 AND SHALL SUPERSEDE REQUIREMENTS DEFINED IN SPECIFICATIONS:

- UNLESS NOTED OTHERWISE, ALL CONDUITS SHALL BE SCHEDULE 40 PVC WITH BARE COPPER GROUND WIRE. ALL CONDUIT SHALL BE RUN PARALLEL OR PERPENDICULAR TO THE BUILDING SURFACES. ALL EMPTY CONDUIT SYSTEMS SHALL BE PROVIDED WITH FULL STRINGS.
- ALL POWER WIRES AND CABLES SHALL BE COPPER, #12 AWG, UNLESS NOTED OTHERWISE. WIRE SHALL BE CODE TYPE THHN OR THWN.
- JUNCTION, PULL, RECEPTACLE, AND LIGHT FIXTURE BOXES SHALL BE PVC.
- ALL FLUSH WIRING DEVICES SHALL BE PROVIDED WITH JUMBO PAGES 4 SEMI-CUR STAINLESS STEEL COVER PLATES. COVER PLATES FOR WIRING DEVICES IN SURFACE BOXES SHALL BE STAINLESS STEEL UTILITY BOX COVERS, RAISED 1/4".
- PROVIDE THE LIGHT FIXTURES AS SCHEDULED. MATERIAL, TRIM, EQUIPMENT OR SERVICES NECESSARY TO COMPLETE THE INSTALLATION OF THESE FIXTURES, BUT NOT SPECIFICALLY MENTIONED, SHALL BE FURNISHED AS THOUGH SPECIFIED.
- ALL ELECTRICAL EQUIPMENT AND INSTALLATION SHALL MEET THE REQUIREMENTS OF NEC ARTICLE 680. ALL EQUIPMENT IN AND AROUND THE POOL SHALL BE UL LISTED AND APPROVED FOR POOL USE.
- FOR ALL ELECTRICAL ENCLOSURES, PANELS, MCC, TRANSFORMERS, ETC., PROVIDE BLACK PHENOLIC PLASTIC TAGS WITH WHITE LETTERING. TAGS SHALL CLEARLY DESCRIBE CONTENTS OF ENCLOSURE OR FUNCTION OF DEVICE AND SHALL BE MECHANICALLY FASTENED TO THE ENCLOSURE. ADHESIVE FASTENING SHALL NOT BE ACCEPTABLE.
- ALL ELECTRICAL EQUIPMENT IN ENCLOSED PUMP PITS AND FILTER AREAS SHALL BE IN NEMA-4 ENCLOSURES. ALL EXTERIOR ELECTRICAL EQUIPMENT SHALL BE NEMA-3R ENCLOSURES. ALL ELECTRICAL EQUIPMENT IN DEDICATED MECHANICAL/ELECTRICAL ROOMS SHALL BE NEMA-1. THIS NOTE SHALL APPLY UNLESS NOTED OTHERWISE ON DRAWINGS.
- ALL BELOW GRADE CONDUITS ON SITE SHALL BE ROUTED IN GRANULAR FILL OR LOWER, AND NOT WITHIN THE CONCRETE DECK.

ELECTRICAL PLAN NOTES:

- #8 SOLID BARE COPPER SPRAY-GROUND BONDING LOOP. BOND ALL METALLIC ITEMS AS REQUIRED BY THE NATIONAL ELECTRIC CODE, 680.26. INSTALL BONDING LOOP 18" x 24" FROM INSIDE FACE OF POOL AND 4'-6" BELOW THE FINISHED DECK ELEVATION. SEE DETAIL #2/SP-ME2 FOR FURTHER INFORMATION.
- EXTEND #8 BONDING WIRE INTO FILTER AREA OR PUMP PIT AND BOND TO PUMPS.
- PROVIDE TWO (2) 2" CONDUITS WITH FULL STRING FOR DATA. ROUTE TO SERVICE PEDESTAL, COORDINATE PROVIDER AND EXACT LOCATION OF CONDUIT STUD-UP WITH OWNER DURING CONSTRUCTION.
- PROVIDE HALL-MOUNTED NEMA-3R ENCLOSURE FOR IT EQUIPMENT AND PROVIDE DEDICATED CIRCUIT TO QUAD RECEPTACLE WITHIN ENCLOSURE. COORDINATE REQUIRED ENCLOSURE SIZE WITH INTERNET SERVICE PROVIDER. ENCLOSURE SHALL BE LARGE ENOUGH TO ACCOMMODATE ISP EQUIPMENT AND AN 8-PORT SWITCH. CONFIRM ENCLOSURE LOCATION AND MOUNTING HEIGHT WITH OWNER.
- PROVIDE (1) CAT6 PLENUM RATED DATA CABLE WITHIN 3/4" C. FROM IT ENCLOSURE TO THE CHEMICAL CONTROLLER IN THE PUMP/FILTER AREA, TO WIRELESS ACCESS POINTS TO ALLOW FOR PUBLIC WI-FI, AND TO POINT OF SALE STATIONS. CONDUIT SHALL BE ROUTED CLEANLY. CONFIRM LOCATIONS AND ROUTING WITH OWNER PRIOR TO CONSTRUCTION. CABLE SHALL BE BLUE 23/4 SOLID CU CAT6 PLENUM RATED DATA CABLE BY SOUTHWIRE, MODEL 56418044 OR EQUAL.
- CONTRACTOR SHALL PROVIDE CONNECTION TO EXISTING EXTERIOR LIGHT FIXTURE. POLE LIGHT FIXTURES SHALL OPERATE ON THE SAME SCHEDULE AS THE EXISTING BUILDING EXTERIOR LIGHTING. CONFIRM THE CIRCUIT IS ROUTED THROUGH THE EXISTING LIGHTING CONTRACTOR AND PHOTOCELL LOCATED IN THE BATHHOUSE. FEEDER SHALL BE (2) #8 & #10G, IN 1" CONDUIT.
- DECK RECEPTACLE - PROVIDE PEDESTAL MOUNTED POWER OUTLET PANEL TYPICAL OF SQUARE D SERVICE PACK IIC WITH (2) 20A, 120V RECEPTACLES. ENCLOSURE SHALL BE NEMA-3R AND RECEPTACLE SHALL BE GFI PROTECTED. REFERENCE PEDESTAL DECK RECEPTACLE DETAIL ON THIS SHEET FOR MORE INFORMATION. FEEDER SHALL BE (2) #4 & #10G, IN 1" CONDUIT.



WICHITA, KANSAS
Spray Ground
COLLEGE HILL PARK



Casey John Steiner
License #19423
Date: 10-20-21 Job #: 18-512
Drawn: CDW Checked: CJS
Issue: CONSTRUCTION DOCUMENTS

MEP SITE
PLAN

SP-ME2