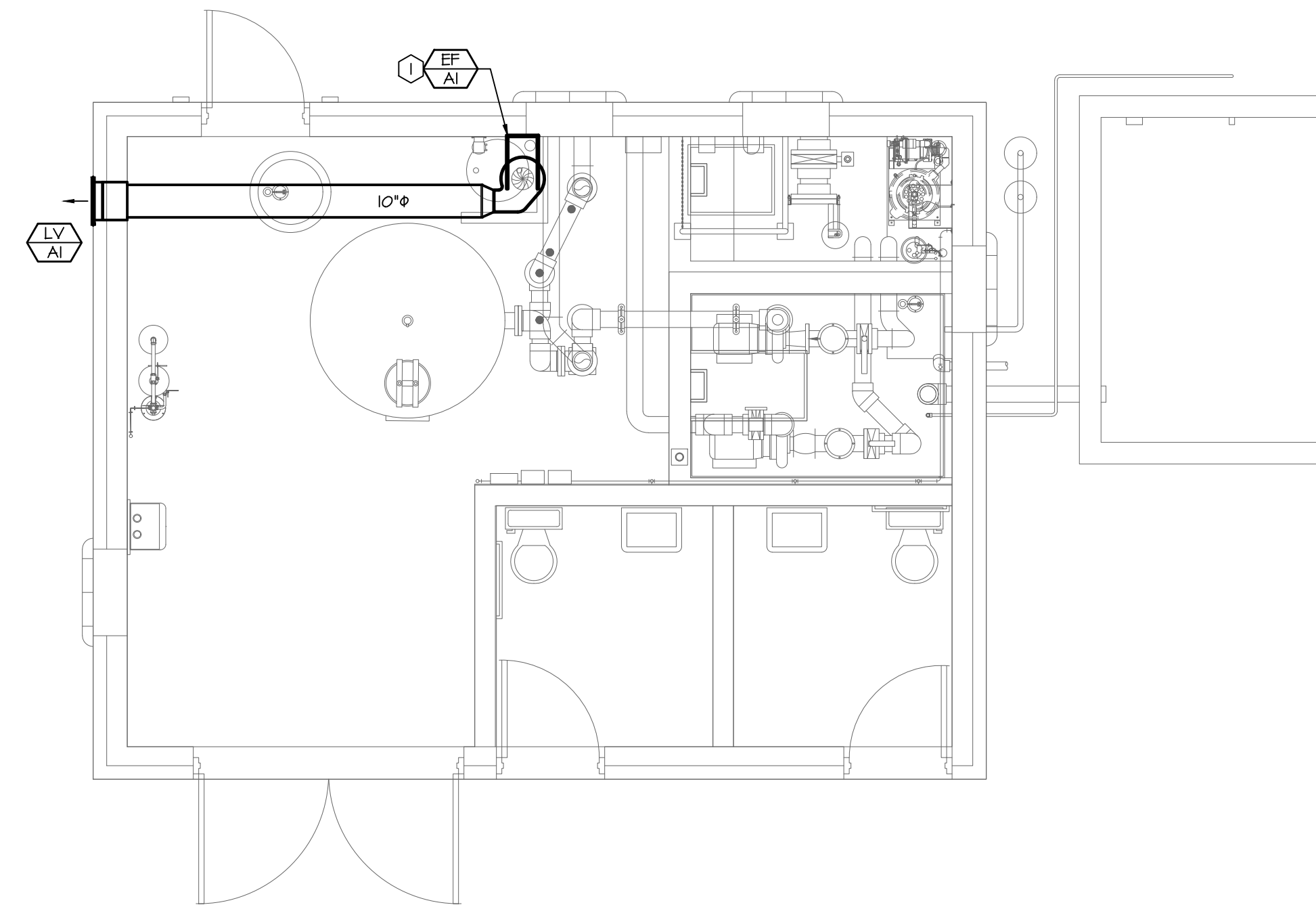
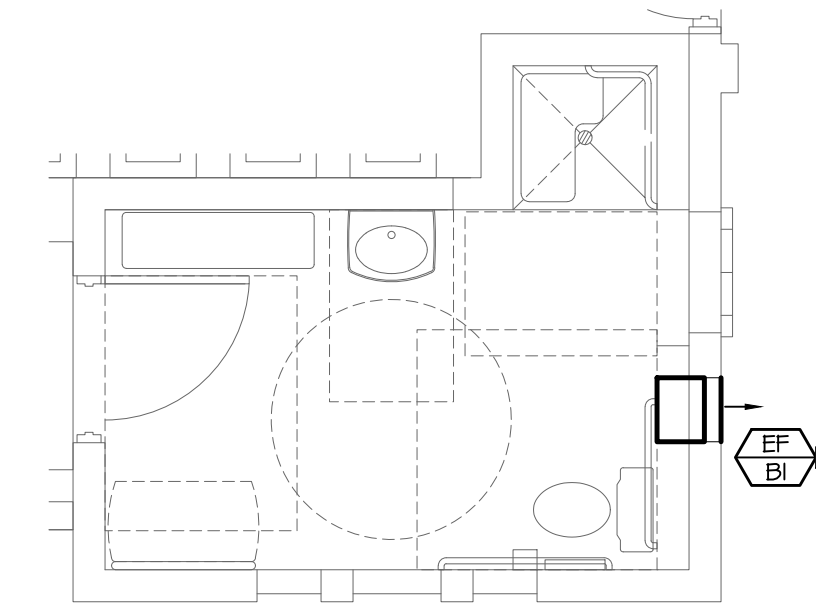


3 Chemical Exhaust Fan Detail
Scale: Not to Scale



1 Filter Room Mechanical Plan
Scale: 1/4" = 1'-0"



2 Family Change Mechanical Plan
Scale: 1/4" = 1'-0"

EXHAUST FAN SCHEDULE										
MARK	MANUFACTURER	MODEL	CFM	S.P.	DRIVE	RPM	WATTS	HP	V/PH	NOTES
EF-AI	FANAM	GBI-200	650	0.5	DIRECT	1125	-	1/4	120/1	12
EF-BI	COOK	GBF	200	0.4	DIRECT	-	Ø2	-	120/1	3,4

NOTES:

- FAN HOUSING AND WHEEL SHALL BE CONSTRUCTED OF POLYPROPYLENE.
- PROVIDE FAN WITH MANUFACTURER'S DISCONNECT SWITCH.
- PROVIDE FAN WITH MANUFACTURER'S SPEED CONTROLLER.
- PROVIDE FAN WITH MANUFACTURER'S SECOND GRILLE.

LOUVER SCHEDULE									
MARK	MANUFACTURER	MODEL	SERVICE	SIZE W x H (IN.)	AIRFLOW CFM	MIN. FREE AREA (S.F.)	MAX. PD INCHES WC	NOTES	
LV-AI	RUSKIN	5F640	EXHAUST	18x18	650	0.65	0.20	1	

PLAN NOTES:

- PROVIDE FIBERGLASS LOUVER WITH FIBERGLASS INSECT SCREEN.

GENERAL NOTES:

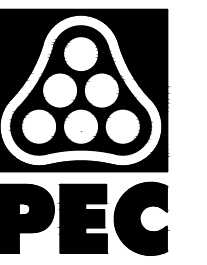
- PROVIDE MOUNTING FRAME TO MATCH CONSTRUCTION.
- CUSTOM COLOR TO BE SELECTED BY ARCHITECT DURING THE SUBMITTAL PROCESS.
- PROVIDE ALL FASTENERS, HANGERS, AND ASSOCIATED DEVICES REQUIRED FOR COMPLETE INSTALLATION.

GENERAL NOTES:

- THESE DRAWINGS ARE DIAGRAMMATIC AND INDICATE THE GENERAL EXTENT OF THE WORK. PROVIDE SHEET METAL SYSTEMS COMPLETE AND PER APPLICABLE CODES INCLUDING ALL NECESSARY OFFSETS, FITTINGS AND SPECIAL RADII OR MITRED ELBOWS WHICH ARE REQUIRED DUE TO SPACE CONSTRAINTS OR OTHER CONDITIONS.
- COORDINATE THE INSTALLATION OF THE DUCTWORK AND EQUIPMENT WITH THE WORK OF ALL OTHER TRADES. VERIFY ALL CLEARANCES PRIOR TO THE FABRICATION OF ANY SYSTEM COMPONENTS.
- DUCTWORK SHALL NOT BE LOCATED OVER ELECTRICAL EQUIPMENT OR PANELS. PROVIDE THE CODE REQUIRED WORKING CLEARANCE AROUND ALL ELECTRICAL EQUIPMENT AND PANELS.
- PROVIDE ALL MISCELLANEOUS SUPPORTING STEEL, ETC. FOR THE PROPER INSTALLATION OF ALL MECHANICAL SYSTEMS.
- COORDINATE FLOOR, WALL, ROOF PENETRATIONS, LOUVER SIZES, PAD LOCATIONS, ETC. WITH THE ARCHITECTURAL TRADES.
- ALL DUCTWORK DIMENSIONS INDICATE THE INSIDE CLEAR DIMENSION.

PLAN NOTES:

- PROVIDE CENTRIFUGAL FAN AS SCHEDULED MOUNTED HIGH IN MECHANICAL ROOM. PROVIDE 10" PVC PIPE DOWN TO APPROXIMATELY 8" AFF. JOG DUCTWORK TO BE TIGHT AGAINST WALLS IN CORNER TO ALLOW FOR REMOVAL OF CHEMICAL CONTAINERS WHEN REQUIRED. DISCHARGE DUCTWORK SHALL HAVE FLEXIBLE CONNECTION. PROVIDE 10" PVC DISCHARGE PIPE AND EXTEND TO LOUVER AS HIGH AS POSSIBLE. COORDINATE INSTALLATION OF INTAKE DUCTWORK WITH POOL ENGINEER.
- PROVIDE CINDER BLOCK FAN AS SCHEDULED MOUNTED APPROXIMATELY 8" AFF. FAN SHALL BE ORIENTED TO EXHAUST AIR FROM THE ROOM. THE FAN SHALL BE PROVIDED WITH MANUFACTURER'S SPEED CONTROLLER AND SECOND GRILLE. FAN SHALL OPERATE WITH ROOM LIGHTING. COORDINATE INSTALLATION WITH THE ELECTRICAL CONTRACTOR.



WICHITA, KANSAS
Spray Ground
COLLEGE HILL PARK



CASEY JOHN STEINER
LICENSE #19423

Date: 10-20-21 Job #: 18-512

Drawn: CDW Checked: CJS

Issue: CONSTRUCTION DOCUMENTS

MECHANICAL PLAN,
DETAILS &
SCHEDULES

SP-M1