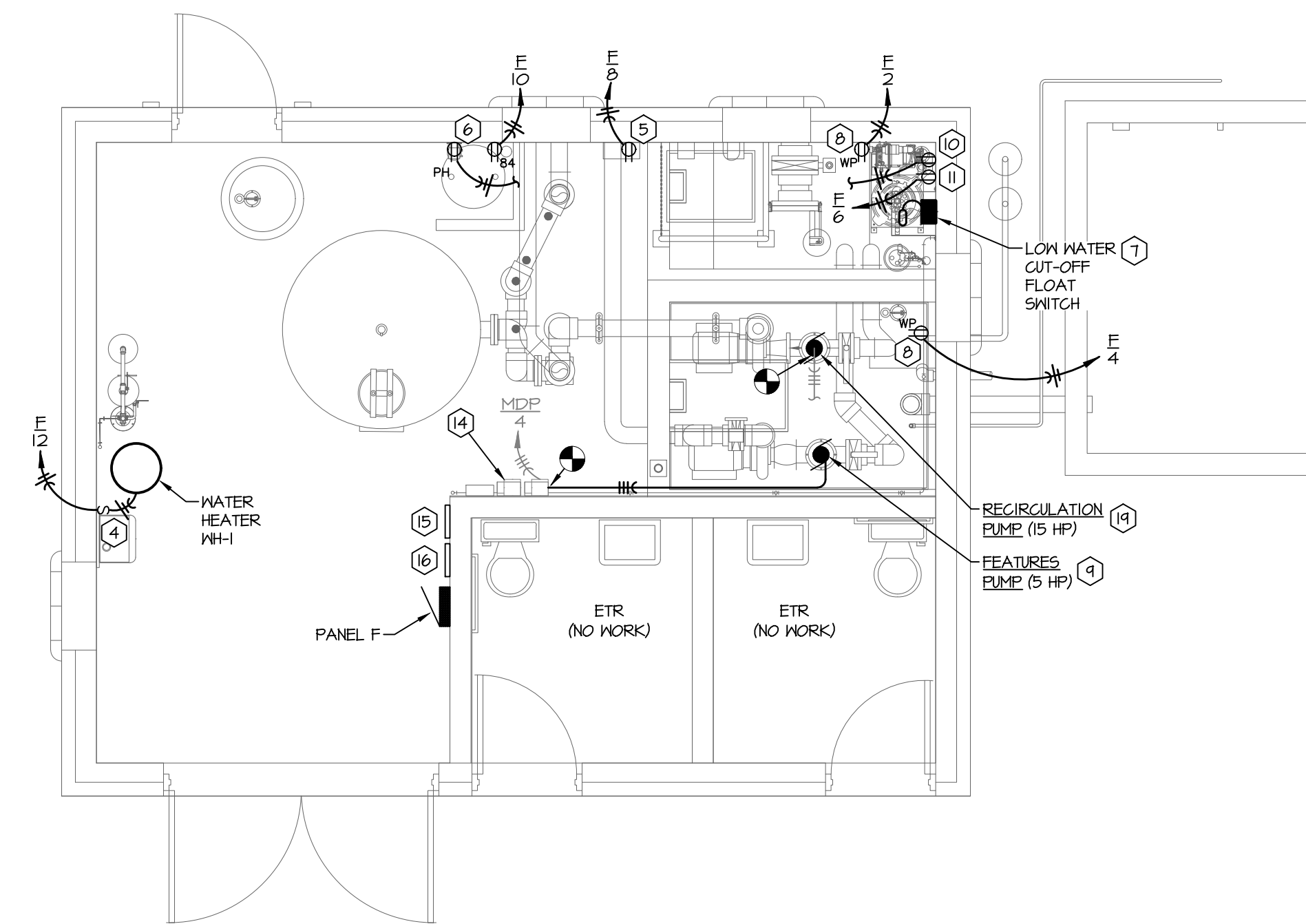
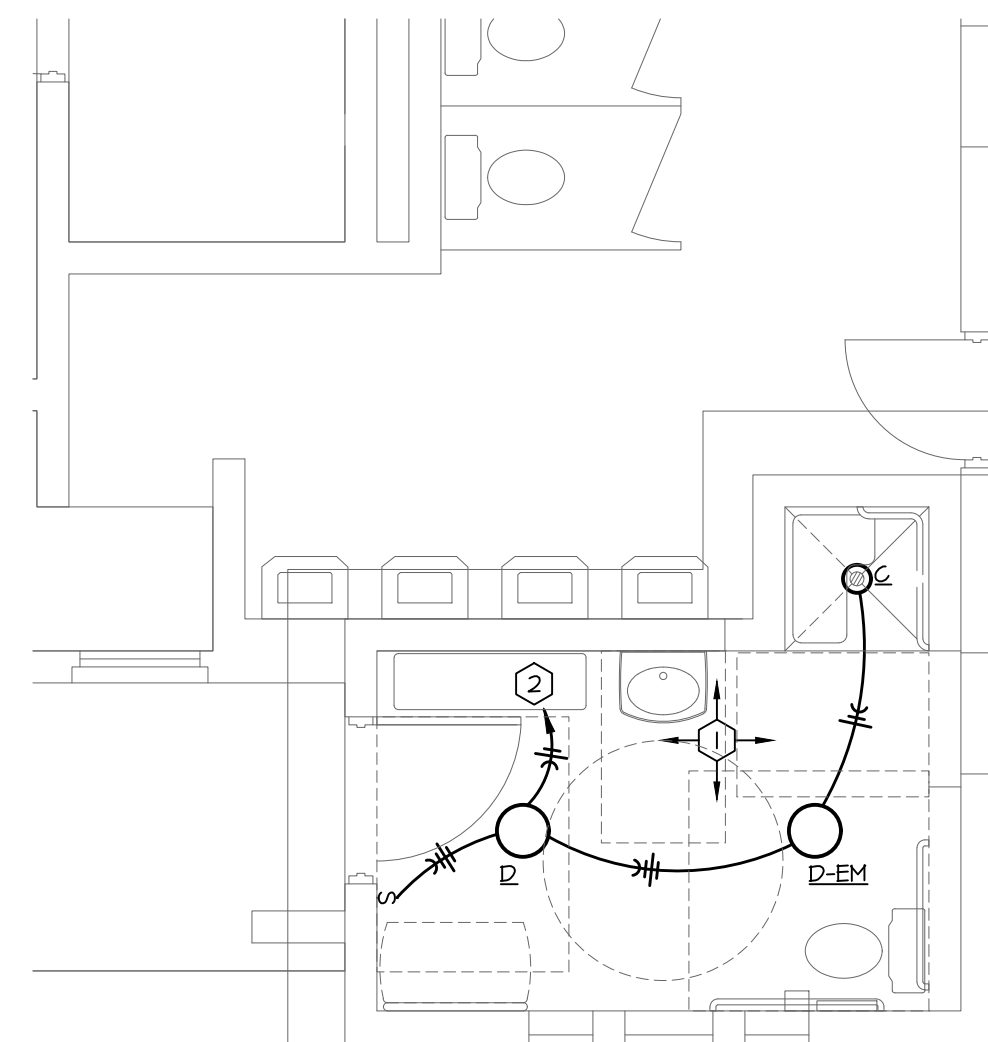


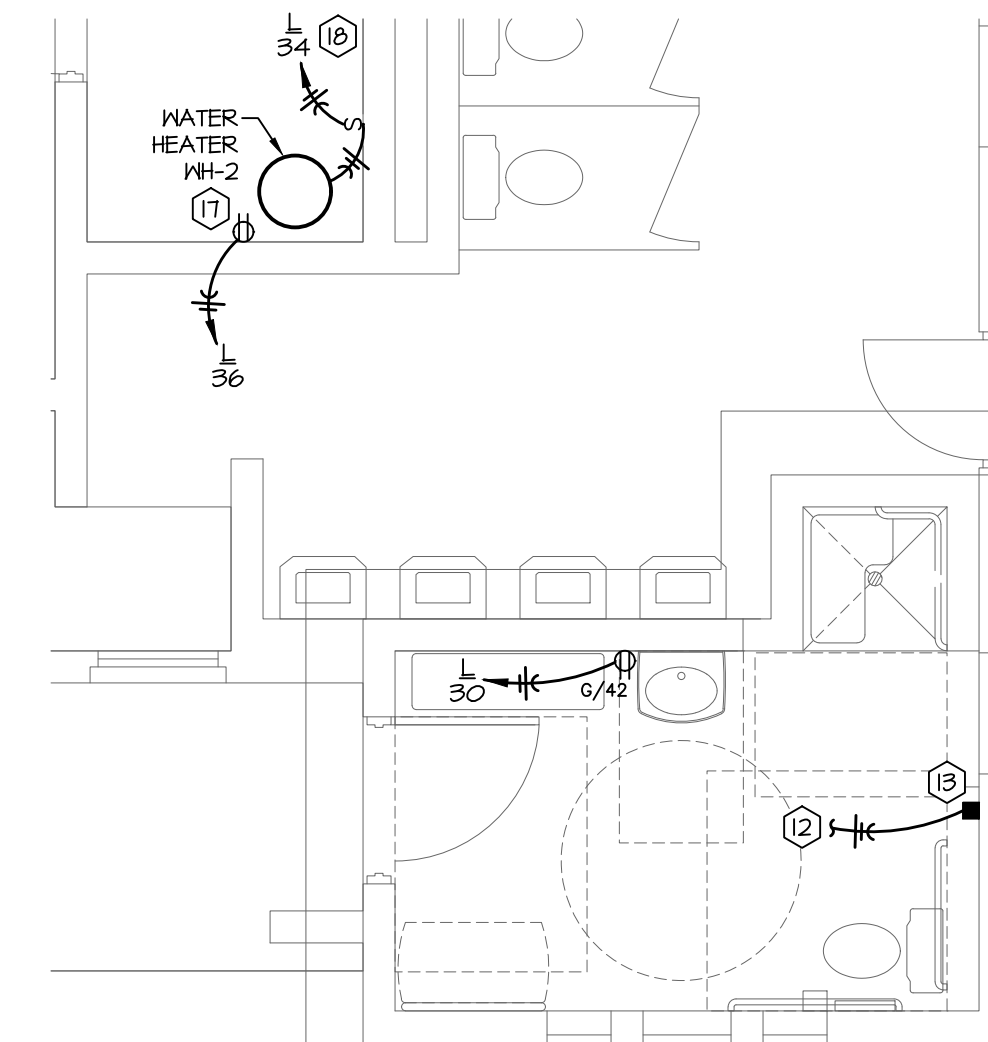
2 Filter Room Lighting Plan
Scale: 1/4" = 1'-0"



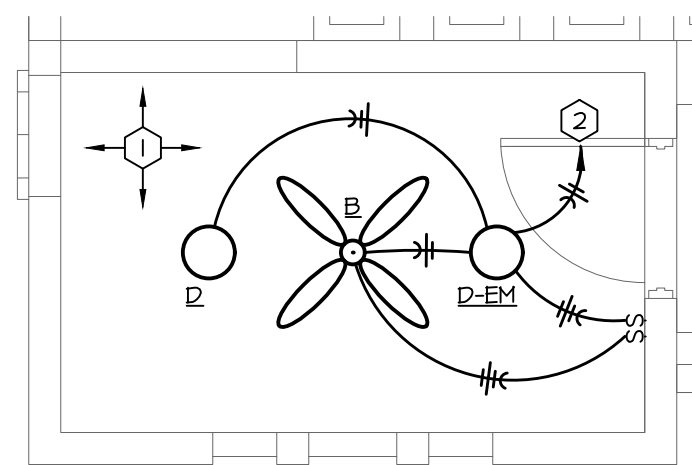
1 Filter Room Power Plan
Scale: 1/4" = 1'-0"



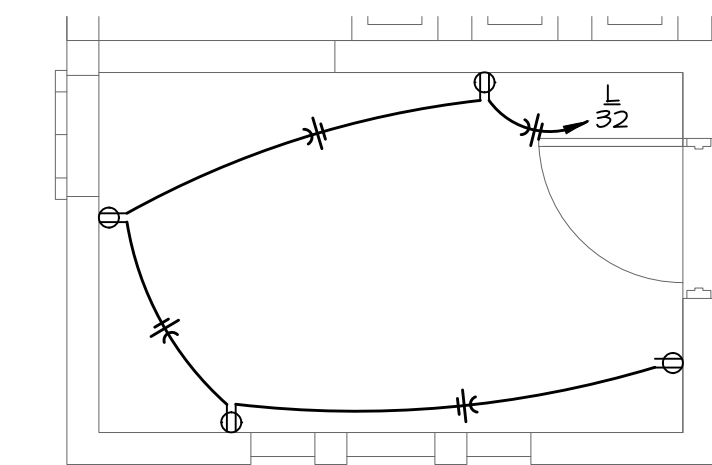
4 Family Change Lighting Plan
Scale: 1/4" = 1'-0"



3 Family Change Power Plan
Scale: 1/4" = 1'-0"



6 Lifeguard Room Lighting Plan
Scale: 1/4" = 1'-0"



5 Lifeguard Room Power Plan
Scale: 1/4" = 1'-0"

GENERAL NOTES:

- A. THESE DRAWINGS ARE DIAGRAMMATIC IN NATURE AND INDICATE THE GENERAL EXTENT OF THE WORK. THE ELECTRICAL CONTRACTOR SHALL PROVIDE ALL FULL BOXES, JUNCTION BOXES AND INCIDENTAL MATERIALS AND LABOR FOR A COMPLETE AND FULLY FUNCTIONAL SYSTEM.
- B. ELECTRICAL CONTRACTOR SHALL DERATE CONDUCTORS AS REQUIRED BY THE NEC WHEN GRADED IN COMMON RACEWAYS.
- C. COORDINATE THE EXACT LIGHT FIXTURE LOCATIONS WITH THE ARCHITECTURAL DRAWINGS.
- D. ALL WIRES RUN BELOW GRADE IN CONCRETE THAT IS IN DIRECT CONTACT WITH THE EARTH, OR MASONRY THAT IS IN DIRECT CONTACT WITH THE EARTH SHALL BE MET LOCATION LISTED.
- E. ALL RECEPTACLES SHALL BE GFI PROTECTED UNLESS NOTED OTHERWISE. AT CONTRACTOR'S OPTION, GFI BREAKERS OR RECEPTACLES MAY BE USED. RECEPTACLES SERVING CONCESSIONS REFRIGERATION EQUIPMENT, CHEMICAL CONTROLLERS, AND EXHAUST FANS SHALL NOT BE GFI PROTECTED.
- F. WHERE PHONE, DATA OR PHONE/DATA OUTLETS ARE SHOWN ON PLANS, CONTRACTOR SHALL PROVIDE A BACKBOX AND CONDUIT WITH PULL STRING BACK TO AN ACCESSIBLE LOCATION AT TELEPHONE BOARD FOR FUTURE WIRING INSTALLATION BY OWNER.
- G. ANY INTERRUPTION OF EXISTING SERVICES AND/OR EQUIPMENT SHALL BE PERFORMED AT A TIME APPROVED IN ADVANCE BY THE OWNER'S REPRESENTATIVE SO AS NOT TO INTERFERE WITH THE PRESENT BUILDING OPERATION.
- H. REMOVE ALL ELECTRICAL ITEMS ON THE SITE AND IN THE FILTER, PUMP, AND CHEMICAL AREAS NO LONGER REQUIRED AFTER THE RENOVATION. THIS SHALL INCLUDE BUT IS NOT LIMITED TO PUMPS, FILTERS, STARTERS, FEEDERS, AND CONTROLS.

PLAN NOTES:

1. REMOVE EXISTING LIGHT FIXTURES IN THIS SPACE. RETAIN CIRCUITING FOR CONNECTION TO NEW FIXTURES.
2. CONNECT NEW LIGHT FIXTURES TO EXISTING CIRCUIT RETAINED DURING DEMOLITION. -EM FIXTURES SHALL BE CONNECTED TO A "HOT" CONDUCTOR. MODIFY NEW CIRCUIT AS REQUIRED.
3. REPLACE EXISTING LIGHT FIXTURES IN THIS SPACE WITH FIXTURES AS SCHEDULED. RETAIN EXISTING CONTROLS. -EM FIXTURES SHALL BE CONNECTED TO A "HOT" CONDUCTOR. MODIFY NEW CIRCUIT AS REQUIRED.
4. PROVIDE 120V/1PH POWER TO NEW WATER HEATER LOCATED ABOVE/ADJACENT TO EMERGENCY EYEWASH/SHOWER STATION. PROVIDE TOGGLE SWITCH DISCONNECT.
5. CHEMICAL CONTROLLER RECEPTACLE. PROVIDE ENGRAVED COVERPLATE DENOTING POOL SERVED AND CHEMICAL CONTROLLER. ROUTE FEEDER BETWEEN CHEMICAL RECEPTACLE AND CHEMICAL CONTROLLER.
6. PH FEEDER RECEPTACLE. CONNECT CIRCUIT TO CHEMICAL CONTROLLER. SEE CIRCULATION PUMP CONTROL SCHEMATIC ON SHEET SP-E2 FOR MORE INFORMATION. PROVIDE ENGRAVED COVERPLATE DENOTING PH FEEDER.
7. PROVIDE ZOELLER SWITCH-MATE PIGGYBACK VARIABLE LEVEL FLOAT SWITCH (VLFS). FLOAT SHALL BE NORMALLY OPEN (NO) OR NORMALLY CLOSED (NC) PER NOTES BE RATED FOR 15A AT 125V, AND SHALL NOT CONTAIN MERCURY. COORDINATE MOUNTING HEIGHT WITH POOL ENGINEERS. INSTALL PER MANUFACTURER'S INSTRUCTIONS.
8. PROVIDE 50HP PUMP RECEPTACLE AS REQUIRED. RECEPTACLE SHALL BE ABOVE FLOOD RIM OF PIT.
9. ROUTE FEEDER BETWEEN PUMP MOTOR/DRIVE AND EXISTING DISCONNECT. FEEDER SHALL BE ROUTED CLEANLY AND SHALL NOT BE ROUTED ACROSS THE FLOOR.
10. CHLORINE FEEDER RECEPTACLE. CONNECT CIRCUIT TO CHEMICAL CONTROLLER. SEE CIRCULATION PUMP CONTROL SCHEMATIC ON SHEET SP-E2 FOR MORE INFORMATION. PROVIDE ENGRAVED COVERPLATE DENOTING POOL SERVED AND CHLORINE FEEDER.
11. CHLORINE FEEDER CONSTANT POWER RECEPTACLE. PROVIDE ENGRAVED COVERPLATE DENOTING POOL SERVED AND CHLORINE FEEDER. COORDINATE EXACT HEIGHT OF RECEPTACLE WITH MANUFACTURER.
12. EXHAUST FAN POWER SHALL BE ROUTED THROUGH NEW WALL. EXHAUST FAN SHALL BE INTERLOCKED WITH THE ROOM LIGHTINGS. COORDINATE EXACT HEIGHT AND LOCATION WITH MECHANICAL CONTRACTOR PRIOR TO ROUGH-IN.
13. INSTALL FAN SPEED CONTROLLER IN AN ACCESSIBLE LOCATION ABOVE THE CEILING. COORDINATE A 200 CFM EXHAUST RATE WITH THE MECHANICAL CONTRACTOR.
14. MODIFY EXISTING PUMP MOTOR STARTER WIRING AND INTEGRATE INTO NEW CONTROLS AND PUMP START/STOP STATION AS DETAILED ON SHEET SP-E2.
15. PUMP START/STOP STATION - PROVIDE PUMP START/STOP STATION. REFERENCE CIRCULATION PUMP CONTROL SCHEMATIC ON SHEET SP-E2 FOR ADDITIONAL INFORMATION. CONTROL STATION SHALL BE CENTERED 4'-6" AFF.
16. LOW WATER RESET STATION - PROVIDE LOW WATER PUMP RESET STATION. REFERENCE FLOAT SWITCH SCHEMATIC ON SHEET SP-E2 FOR ADDITIONAL INFORMATION. CONTROL STATION SHALL BE CENTERED 4'-6" AFF.
17. PROVIDE RECEPTACLE FOR RECIRCULATION PUMP ABOVE CEILING.
18. PROVIDE 120V/1PH POWER TO NEW WATER HEATER LOCATED ABOVE CEILING. PROVIDE TOGGLE SWITCH DISCONNECT.
19. PROVIDE CONNECTION BETWEEN REPLACEMENT RECIRCULATION PUMP AND EXISTING FEEDER. REFER TO ELECTRICAL RISER DIAGRAM FOR MORE INFORMATION.



WICHITA, KANSAS
Spray Ground
COLLEGE HILL PARK



CASEY JOHN STEINER
LICENSE #19423

Date: 10-20-21 Job #: 18-512

Drawn: CDW Checked: CJS

Issue: CONSTRUCTION DOCUMENTS

ELECTRICAL
PLAN

SP-E1