

POOL AREA KEY NOTES

- 1 Subgrade at new pool floor ~ See Detail C-SP-P2
~ Subgrade and backfill to be reviewed and revised as req'd by Engineer after receipt and review of Geotechnical Report
- 2 Existing subgrade at existing filter area and new pool expansion shall be shored as req'd
- 3 Subgrade at new pool deck
~ Remove existing settled subgrade, recompact, and provide 9" min. depth structural fill geotextile fabric, and 9" min. depth of granular fill, under all new deck
~ Subgrade and backfill to be reviewed and revised as req'd by Engineer after receipt and review of Geotechnical Report
- 4 Existing pool floor ~ See Detail A-SP-PM2
- 5 Existing pool wall ~ See Detail A-SP-PM2
- 6 Existing pool deck ~ See Detail A-SP-PM2
- 7 Existing sidewalk, fence, and pool deck ~ See Detail A-SP-PM2
- 8 Existing gutter outlet ~ See Detail A-SP-PM2
- 9 Existing recirc inlet lateral ~ See Detail A-SP-PM2
- 10a Existing piping shall be pressure tested and replaced as required per measured quantity/unit cost
- 10b Existing main drain piping
- 11 Existing gutter return piping
- 12 Existing recirc piping
- 13 Existing recirc floor inlet
- 14 Existing feature piping
- 15 Pool floor ~ See Detail A-SP-PM2
- 16 Pool wall ~ See Detail A-SP-PM2
- 17 Pool deck ~ See Detail A-SP-PM2
- 18 Gutter return piping
- 19 Recirc piping
- 20 Feature piping
- 21 Connection at existing piping to new piping
- 22 Deep area main drain VGB grate ~ Approx. 24" x 24" ~ Contractor shall verify ~ Raised finish with adjacent pool floor ~ Anchor per mfr. with S.S. hardware
- 23 Shallow area main drain VGB grate ~ Approx. 24" x 24" ~ Contractor shall verify ~ Flush finish with adjacent pool floor ~ Anchor per mfr. with S.S. hardware
- 24 Existing cup anchor
- 25 Cup anchor ~ See Detail A-SP-PM2
- 26 Racing line by Owner (N.I.C.)
- 27 Buoy line by Owner (N.I.C.)
- 28 Existing gutter grating shall be reinstalled
- 29 Gutter grating ~ See Detail A-SP-PM2
- 30 Tile deck/gutter wall ~ See Detail A-SP-PM2
- 31 Deck markers ~ See Detail A-SP-PM2 and Legend on Sheet SP-P0
- 32 Remove existing depth markers and repair deck
- 33 ADA ramp with handrails ~ See Detail B-SP-PM3
- 34 Pool floor construction joint ~ See Detail C-SP-PM3
- 35 Pool floor/wall to existing pool floor/wall ~ See Detail D-SP-PM3
- 36 Pool floor repair ~ See Detail E-SP-PM3
- 37 Existing pool construction joints (floor and wall) shall be filled with crystalline repair material ~ Grind existing joints to be clean and minimum 1" wide x 1 1/2" deep
- 38 Existing pool floor and wall cracks shall be filled with crystalline repair material ~ Route existing cracks to be clean and minimum 1" wide x 1 1/2" deep ~ Base bid quantity shall be 100 l.f.
- 39 "Vortex Frog No. 5" ~ See Detail F-SP-PM4
- 40 Pool wall construction joint equally spaced ~ See Detail G-SP-PM4
- 41 Gutter outlet ~ See Detail I-SP-PM4
- 42a Wall inlet fitting with 3/4" orifice (orifice only for existing wall inlets) ~ See Detail J-SP-PM4
- 42b Wall inlet fitting with 3/4" orifice (entire assembly for new wall inlets) ~ See Detail J-SP-PM4
- 43 (3) Recessed steps, (2) existing grab rails, with deck anchors ~ See Detail K-SP-PM4
- 44 Existing grab rails shall be reinstalled at existing recessed steps, with new deck anchors ~ See Detail K-SP-PM4 similar
- 45 Existing gazebo and footings
- 46 Sunshade types
Base bid
~ Mfr. Solar Shade
~ Approx. 30' diameter, single post, standard, hexagon
Alternate bid 1
~ Mfr. Solar Shade
~ Approx. 30' diameter, single post, custom rolled
Alternate bid 2
~ Mfr. Tensile Shade Products
~ Approx. 30' diameter, single post, Trillium
- 47 Sunshade types
Base bid
~ Mfr. Solar Shade
~ Approx. 16' x 16', single post, cantilever, standard, square
Alternate bid 1
~ Mfr. Solar Shade
~ Approx. 16' diameter, single post, hexagon, custom alternating high/low arms
Alternate bid 2
~ Mfr. Tensile Shade Products
~ Approx. 17' x 19', single post, cantilever, Visor
- 48 ADA ramp handrail wedge anchor ~ See Detail M-SP-PM4
- 49 Slip anchor and backstroke stanchion post ~ See Detail M-SP-PM4
- 50 Backstroke pennant and cable
- 51 Anchor and starting platform (30" setback and verify 5" freeboard) ~ See Detail M-SP-PM4
- 52 Anchors only for starting platform storage (verify spacing) ~ See Detail M-SP-PM4
- 53 Existing portable ADA lift provided by Owner (N.I.C.) ~ Contractor shall provide "Secure-It-Kit" deck anchor
- 54 Pool deck ~ See Detail N-SP-PM4 ~ Deck and drain finish surface elevations
~ Deck slopes shall be 1% min. / 2% max.
~ Water shall not be allowed to pond in any location
~ New deck elevations shall match flush with existing deck/sidewalk elevations
- 55 Pool deck at gutter elevation ~ Contractor shall verify existing
- 56 Construction joint ~ See Detail N-SP-PM4
- 57 Expansion joint ~ See Detail N-SP-PM4
- 58 Isolation joint ~ See Detail N-SP-PM4
- 59 Saw cut ~ See Detail N-SP-PM4
- 60 Valley/ridge line ~ No joint
- 61 Pool finish ~ See Detail O-SP-PM4
- 62 Racing floor and wall target ~ See Detail O-SP-PM4
- 63 Black stripe at main drain grate ~ See Detail O-SP-PM4
- 64 Warning stripe at 5'-0" water depth on floor and wall ~ See Detail O-SP-PM4
- 65 Black stripe at ADA ramp landing curb ~ See Detail O-SP-PM4
- 66 Paint existing backwash manhole lid non-slip white
- 67 Provide fence gate exit hardware and signage "EXIT" and "ATTENTION: EMERGENCY GATE ONLY"
- 68 Existing utility - electric
- 69 Existing utility - gas
- 70 Existing utility - sanitary sewer
- 71 Existing utility - sanitary sewer
~ Contractor shall verify actual existence and location for draining backwash pit
- 72 Existing utility - storm water brick structure shall be protected
~ Contractor shall locate and use extreme caution
- 73 Existing storm sewer inlet
- 74 Provide 12" RCP drain pipe
- 75 Connect to existing storm sewer brick structure
~ Carefully connect at existing penetration and repair
~ Angle of inflow shall be 90° or less relative to upstream flow
- 76 Sidewalk ~ See Detail N-SP-PM4
~ Provide #4 @ 18" dowels drilled and epoxied into existing sidewalk ~ Embed 4"
- 77 Existing utility - water
- 78 Contractor shall verify existing utility location and clearance at sunshade footing and pool piping
- 79 Existing bathroom ~ See Architectural Sheets for improvements
- 80 Existing filter building ~ See Filter Area Sheets for improvements
- 81 Existing backwash pit
- 82 Existing drinking fountain
- 83 Existing deck, steps, ramp, and rails
- 84 Existing bench reinstalled

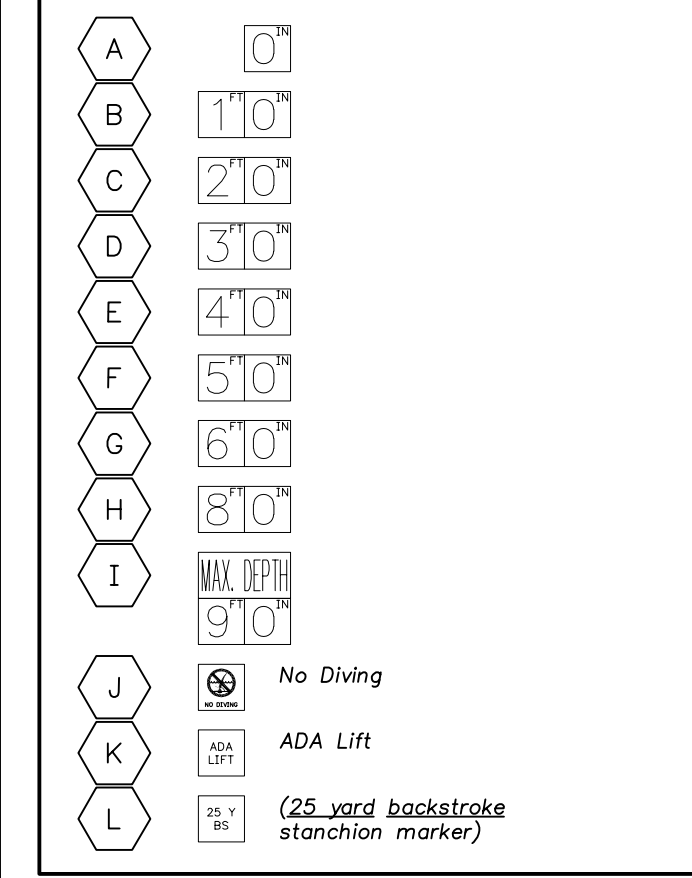
ABBREVIATIONS

&	And
@	At
°	Degree
φ	Diameter
"	Feet
"	Inches
#	Number
w/	With
w/o	Without
ACI	American Concrete Institute
Addl.	Additional
A.F.F	Above finish floor
Approx.	Approximately
Arch.	Architectural
BFV	Butterfly valve
Bldg.	Building
BM	Benchmark
Clr.	Clear
CMU	Concrete masonry unit
Ctr.	Center
Det.	Detail
Diag.	Diagonal
Dim.	Dimension
DIP	Ductile iron pipe
E.F.	Each face
E.W.	Each way
Ea.	Each
El.	Elevation or elbow
Elec.	Electrical
Eq.	Equal
Exp.	Expansion
Fipt	Female iron pipe thread
FRP	Fiberglass reinforced plastic
Fr.	Feet
Galv.	Galvanized
GPW	Gallons per minute
H.C.	Handicap
Hi.	High
HOA	Hand Off Automatic
Horiz./H.	Horizontal
HSS	Hollow steel section
I.D.	Inside diameter
Inv. El.	Invert elevation
Jt.	Joint
Lo.	Low
Long.	Longitudinal
Max.	Maximum
Mfr./Mfr.	Manufacturer
Min.	Minimum
Misc.	Miscellaneous
NEC	National Electrical Code
NEMA	National Electrical Manufacturers Association
N.I.C.	Not in contract
N.T.S.	Not to scale
O.C.	On center
O.D.	Outside diameter
Pl.	Plate
PSI	Pounds per square inch
PVC	Polyvinyl chloride
R	Radius
Rad.	Radius
RCP	Reinforced concrete pipe
Rebar	Reinforcing
Recirc.	Recirculation
Ref.	Reference
Reinf.	Reinforcing
Req'd	Required
S.S.	Stainless steel
Sch	Schedule
SDR	Standard dimension ratio
S.F.	Square feet
Soc	Socket
Sq.	Square
Struct.	Structural
T&B	Top and bottom
TDH	Total dynamic head
Thru	Through
Thus	Typical
Trans.	Transverse
Typ.	Typical
Vert./V.	Vertical

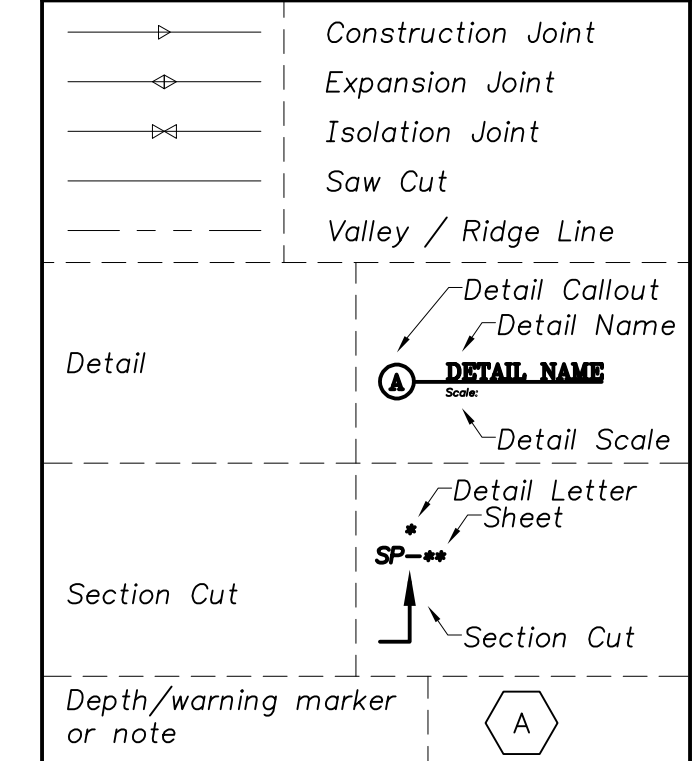
POOL SURFACE AREA DATA	
Shallow Area	2,415 S.F.
Lap Area	1,682 S.F.
Additional Lap Area	525 S.F.
Total Pool Surface Area	4,622 S.F.
Pool Perimeter	381 L.F.
Concrete Deck Area	6,836 S.F.
POOL VOLUME DATA	
Shallow Area	31,280 Gallons
Lap Area	86,160 Gallons
Additional Lap Area	27,220 Gallons
Total Pool Volume	144,660 Gallons
POOL RECIRC. RATE DATA	
Total Pool Recirc. Rate	600 GPM
POOL PATRON DATA	
Total Patrons (MAHC = 1/20s.f.)	231 Patrons

"CERAMIC TILE" DEPTH/WARNING MARKERS

- Ceramic tiles shall be imbedded flush into concrete pool deck
- Depth markers shall be located at 20'-0" O.C. max. spacing (Depth markers on vertical wall - if req'd - shall be located as indicated on plan)
- No Diving markers shall be located at 25'-0" O.C. max. spacing
- Contractor shall verify location of depth markers at proper water depth
- Do not saw cut thru ceramic tiles ~ Saw cuts shall be 6" min. from ceramic tile edge
- Depth/warning markers on deck shall be placed to be read from deck (not from pool)

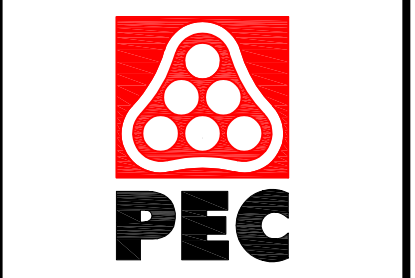


SYMBOLS



11205 W. 79th St.
Lenexa, KS 66214
t. 913.438.4338
www.WeDesignPools.com

Kansas STATE CERTIFICATE OF AUTHORITY #E-990



WICHITA, KANSAS
Pool Improvements
COLLEGE HILL PARK



Jeff Bartley - ENGINEER LICENSE #15116
Date: 09-27-21 Job #: 18-512
Drawn: SRS Checked: JAB

Issue: CONSTRUCTION DOCUMENTS

POOL AREA KEY NOTES AND DATA

SP-P0