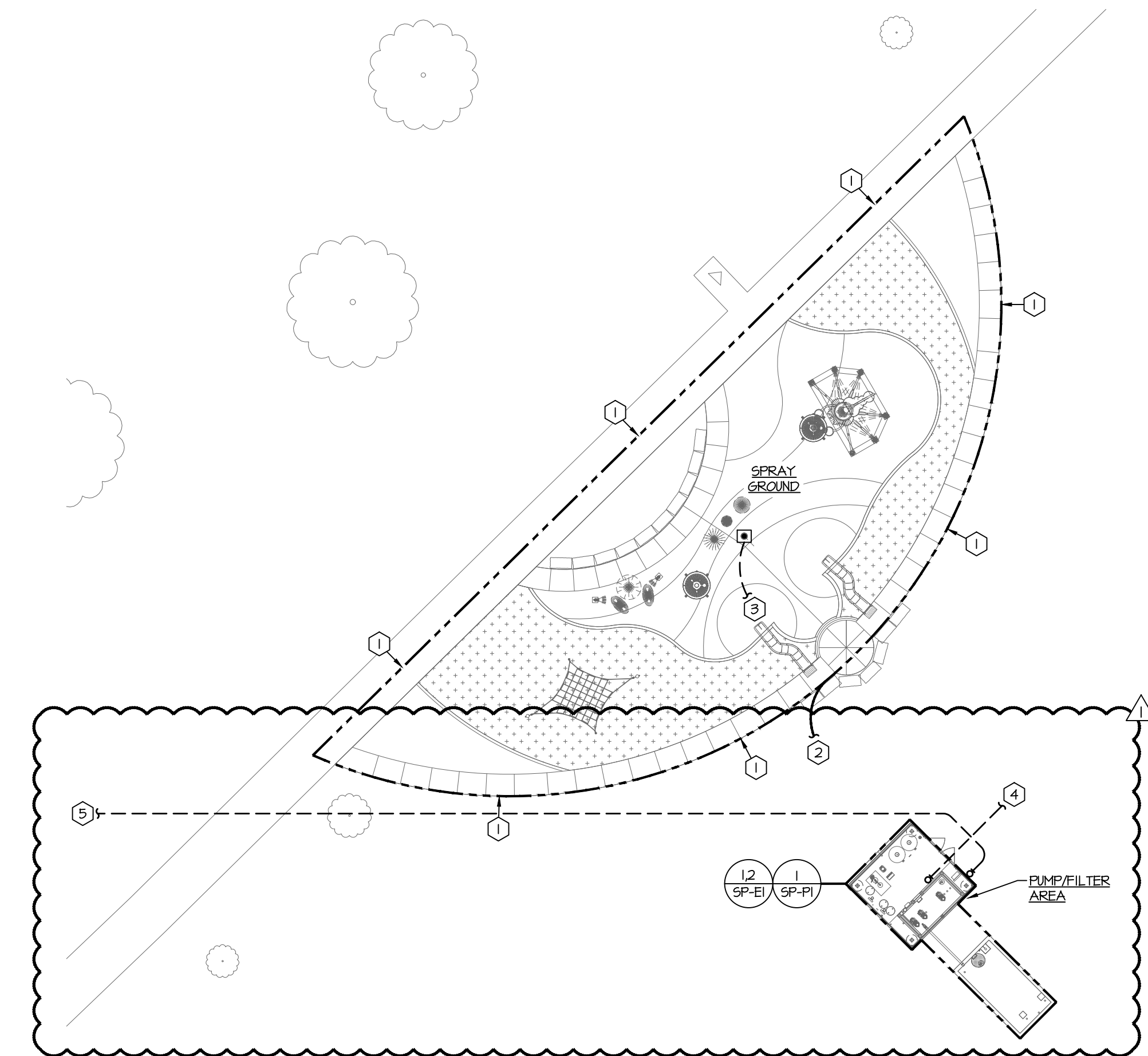


2 Equipotential Bonding Schematic
Scale: None

GENERAL NOTE:
ALL ITEMS SHOWN AND REQUIRED TO BE CONNECTED TO COMMON BONDING LOOP. ELECTRICAL CONTRACTOR SHALL TEST FOR CONTINUITY TO ALL ITEMS AT THE END OF CONSTRUCTION. THE MAXIMUM ALLOWABLE RESISTANCE BETWEEN ANY TWO ITEMS SHALL BE 5 OHMS.



1 MEP Site Plan
Scale: 1" = 20'-0"

- GENERAL NOTES:**
THE FOLLOWING NOTES SHALL APPLY TO ALL WORK SHOWN ON SHEETS SP-ME1, SP-ME2, SP-PI, SP-E1, SP-E2, AND SP-E3 AND SHALL SUPERSEDE REQUIREMENTS DEFINED IN SPECIFICATIONS.
- UNLESS NOTED OTHERWISE, ALL CONDUITS SHALL BE SCHEDULE 40 PVC WITH BARE COPPER GROUND WIRE. ALL CONDUIT SHALL BE RUN PARALLEL OR PERPENDICULAR TO THE BUILDING SURFACES. ALL EMPTY CONDUIT SYSTEMS SHALL BE PROVIDED WITH FULL STRINGS.
 - ALL POWER WIRES AND CABLES SHALL BE COPPER, #12 AWG, UNLESS NOTED OTHERWISE. WIRE SHALL BE CODE TYPE THHN OR THHN.
 - JUNCTION, PULL, RECEPTACLE, AND LIGHT FIXTURE BOXES SHALL BE PVC.
 - ALL FLUSH WIRING DEVICES SHALL BE PROVIDED WITH JUMBO PAGES 4 SEMI-COUR STAINLESS STEEL COVER PLATES. COVER PLATES FOR WIRING DEVICES IN SURFACE BOXES SHALL BE STAINLESS STEEL UTILITY BOX COVERS, RAISED 1/4".
 - PROVIDE THE LIGHT FIXTURES AS SCHEDULED. MATERIAL, TRIM, EQUIPMENT OR SERVICES NECESSARY TO COMPLETE THE INSTALLATION OF THESE FIXTURES, BUT NOT SPECIFICALLY MENTIONED, SHALL BE FURNISHED AS THOUGH SPECIFIED.
 - ALL ELECTRICAL EQUIPMENT AND INSTALLATION SHALL MEET THE REQUIREMENTS OF NEC ARTICLE 680. ALL EQUIPMENT IN AND AROUND THE POOL SHALL BE UL LISTED AND APPROVED FOR POOL USE.
 - FOR ALL ELECTRICAL ENCLOSURES, PANELS, MCC, TRANSFORMERS, ETC., PROVIDE BLACK PHENOLIC PLASTIC TAGS WITH WHITE LETTERING. TAGS SHALL CLEARLY DESCRIBE CONTENTS OF ENCLOSURE OR FUNCTION OF DEVICE AND SHALL BE MECHANICALLY FASTENED TO THE ENCLOSURE. ADHESIVE FASTENING SHALL NOT BE ACCEPTABLE.
 - ALL ELECTRICAL EQUIPMENT IN ENCLOSED PUMP PITS AND FILTER AREAS SHALL BE IN NEMA-4 ENCLOSURES. ALL EXTERIOR ELECTRICAL EQUIPMENT SHALL BE NEMA-3R ENCLOSURES. ALL ELECTRICAL EQUIPMENT IN DEDICATED MECHANICAL/ELECTRICAL ROOMS SHALL BE NEMA-1. THIS NOTE SHALL APPLY UNLESS NOTED OTHERWISE ON DRAWINGS.
 - ALL BELOW GRADE CONDUITS ON SITE SHALL BE ROUTED IN GRANULAR FILL OR LOWER, AND NOT WITHIN THE CONCRETE DECK.
- ELECTRICAL PLAN NOTES:**
- #8 SOLID BARE COPPER SPRAYGROUND BONDING LOOP. BOND ALL METALLIC ITEMS AS REQUIRED BY THE NATIONAL ELECTRIC CODE, 680.26. INSTALL BONDING LOOP 18"-24" FROM INSIDE FACE OF SPRAYGROUND AND 4"-6" BELOW THE FINISHED DECK ELEVATION. SEE DETAIL #2/SP-ME2 FOR FURTHER INFORMATION.
 - EXTEND #8 BONDING WIRE INTO FILTER AREA OR PUMP PIT AND BOND TO PUMPS.
 - PROVIDE (1) 3/4" SCHEDULE 40 PVC CONDUIT WITH (2) #12 CONTROL CONDUCTORS BELOW GRADE TO FILTER/PUMP AREA AND CONNECT TO VORTEX SMARTFLOW LOGICS CONTROLLER. REFER TO ELECTRICAL PLAN ON SHEET SP-E1 FOR CONTINUATION. COORDINATE ACTIVATION BOLLARD/BUTTON LOCATION WITH POOL ENGINEER.
 - PROVIDE TWO (2) 2" CONDUITS WITH PULL STRING FOR DATA. ROUTE TO SERVICE PEDestal. COORDINATE PROVIDER AND EXACT LOCATION OF CONDUIT STUB-UP WITH OWNER DURING CONSTRUCTION.
 - TRENCHING AND UTILITY TRANSFORMER SECONDARY CONDUIT ARE THE CONTRACTOR'S RESPONSIBILITY. THE UTILITY WILL PULL THE SECONDARY WIRES. CONTRACTOR SHALL COORDINATE REQUIREMENTS OF UTILITY TRANSFORMER SECONDARY CONDUIT WITH THE UTILITY PRIOR TO CONSTRUCTION. ESTIMATED APPROXIMATE LENGTH OF UTILITY TRANSFORMER SECONDARY FEEDER IS 400 FEET. ESTIMATED APPROXIMATE LOCATION OF UTILITY TRANSFORMER IS ALONG S. REEB ROAD ON THE NORTH SIDE OF THE PARKING LOT, EVERETT WICHITA CONSTRUCTION SERVICES PHONE NUMBER IS: 316-261-6301.

waters edge
AQUATIC DESIGN

11205 W. 79th St.
Lenexa, KS 66214
t. 913.438.4338
www.WaterDesignPools.com

Kansas STATE CERTIFICATE OF AUTHORITY #E-990

PEC

landworks
STUDIO

ARCHITECTURAL
URBAN PRAIRIE
COLLABORATIVE, P.C.

H&B
HOSS & BROWN
ENGINEERS

WICHITA, KANSAS
City of
WICHITA

Seal:
CASEY STEINER
LICENSED PROFESSIONAL ENGINEER
KANSAS
11/9/21

CASEY JOHN STEINER
LICENSE #19423
Date: 10-20-21 Job #: 18-512
Drawn: CDW Checked: CJS
Issue: CONSTRUCTION DOCUMENTS

MEP SITE PLAN

SP-ME2
Water's Edge Aquatic Design
© 2020

11/04/21 - REVISION #1



WICHITA, KANSAS
Spray Ground
HARRISON PARK



Seal:



CASEY JOHN STEINER
LICENSE #19423

Date: 10-20-21 Job #: 18-512

Drawn: CDW Checked: CJS

Issue: CONSTRUCTION DOCUMENTS

ELECTRICAL
DETAILS AND
RISER DIAGRAM

SP-E3

Water's Edge Aquatic Design
© 2020

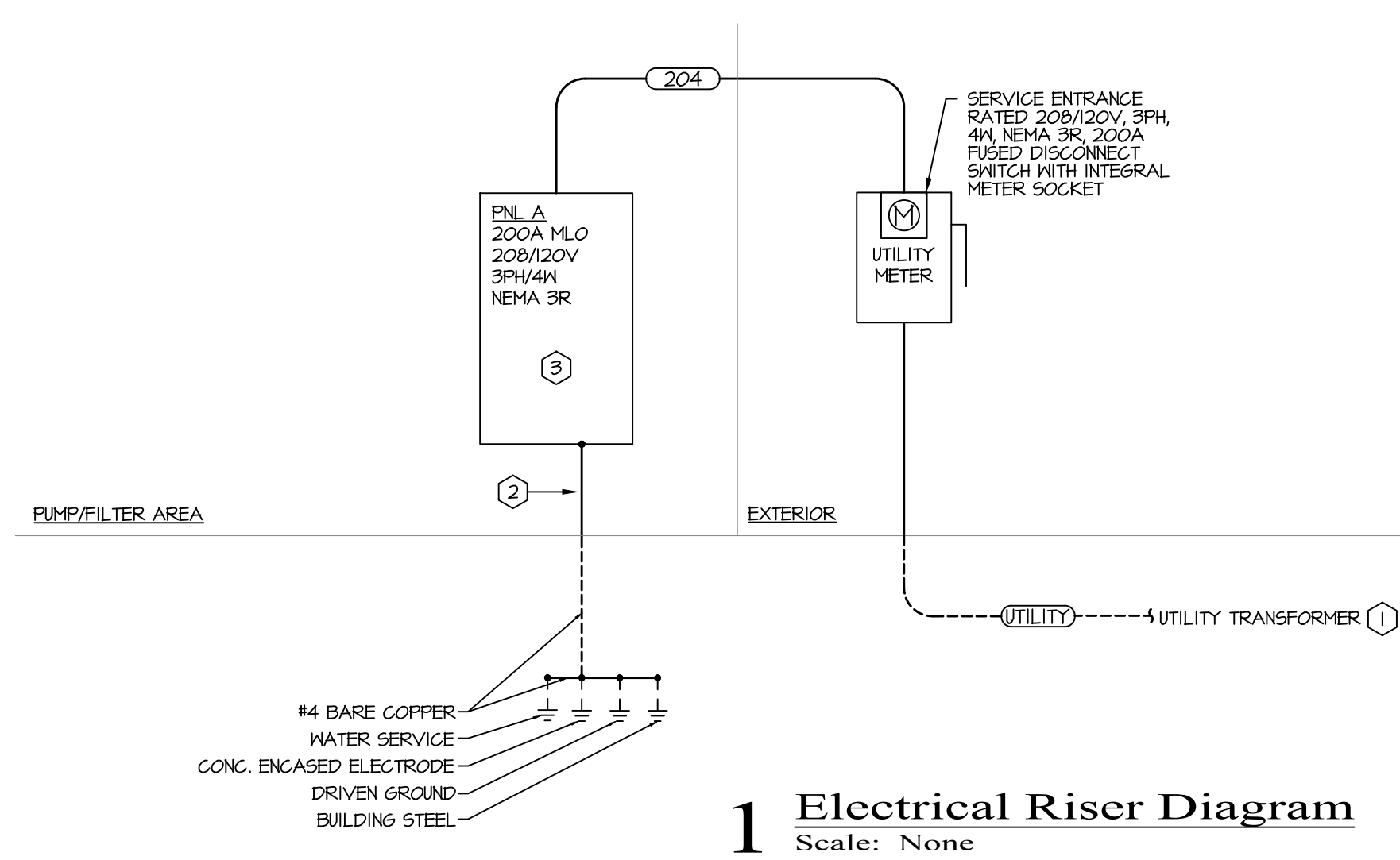
PANEL A						
DESCRIPTION: 200A MLO		100% Neutral Bus NEMA 3R Enclosure		VOLTAGE: 120/208V, 3PH, 4 WIRE		
22 kAIC RATING				TOTAL CONNECTED LOAD: 22kW @ 61A DEMANDED LOAD CONTINUOUS: 24kW @ 65A		
NO	LOAD (W)	LOAD DESCRIPTION	AMP P SIZE	AMP P SIZE	LOAD DESCRIPTION	LOAD (W) NO
1	210T	PUMP - RECIRC	3	40	A 20	RCPT - GENERAL 180 2
3	210T	(5 HP)			B 20	RCPT - CHEM FEEDERS 180 4
5	210T				C 20	RCPT - CHEM CONTROLLER 180 6
7	210T	PUMP - SCORPION	3	40	A 20	RCPT - VORTEXMAG 360 8
4	210T	(5 HP)			B 20	RCPT - SUMP 180 10
11	210T				C 20	LITG - FILTER AREA 200 12
13	210T	PUMP - SPRAYS	3	40	A 20	WATER HEATER 1500 14
15	210T	(5 HP)			B 20	IT EQUIPMENT 180 16
17	210T				C 20	SPARE 0 18
19	0	SPARE	1	20	A 20	SPARE 0 20
21	0	SPARE	1	20	B 20	SPARE 0 22
23	0	SPARE	1	20	C 20	SPARE 0 24
25	0	SPARE	1	20	A 20	SPARE 0 26
27	0	SPARE	1	20	B 20	SPARE 0 28
29	0	SPARE	1	20	C 20	SPARE 0 30

LIGHT FIXTURE SCHEDULE

MARK	MANUFACTURER	MODEL	LAMP DATA			VOLTS	MOUNTING	TOTAL WATTS	DESCRIPTION	NOTES
			LUMENS	TYPE	COLOR (K)					
A	WILLIAMS	96-4-L40/B40-HIAFR-KET/I-DRV-UNV	4000	LED	4000K/82CRI	UNV	40	4" DEEP ENCLOSED INDUSTRIAL, 4FT	I	
A-EM	WILLIAMS	96-4-L40/B40-HIAFR-EM/I/8VC-KET/I-DRV-UNV	4000	LED	4000K/82CRI	UNV	40	4" DEEP ENCLOSED INDUSTRIAL, 4FT, EM	I	

NOTES:
I. FIXTURE SHALL BE MET LISTED.

GENERAL NOTES (APPLIES TO ALL ABOVE):
A. ALL LIGHT FIXTURES SCHEDULED AND SHOWN ON THE PLANS WITH AN 'EM' TAG SUFFIX SHALL HAVE AN INTEGRAL EMERGENCY DRIVER.
B. CONTRACTOR SHALL VERIFY CEILING TYPE PRIOR TO ORDERING ALL FIXTURES.



- RISER NEW WORK NOTES:**
- UTILITY SERVICE - REFER TO SHEET SP-ME2 FOR MORE INFORMATION.
 - GROUNDING - SERVICE ENTRANCE EQUIPMENT SHALL BE GROUND PER THE GROUNDING ELECTRODE SYSTEM REQUIREMENTS SET FORTH IN NEC 250.50.
 - PANEL A - CONTRACTOR SHALL PROVIDE 200A MLO, 120/208V, 22kAIC, 30 POLE NEMA 3R PANEL.

- FEEDER SCHEDULE:**
- (UTILITY) (4) #3/0, #6 GROUND IN 2" CONDUIT
 - (204) (4) #3/0, #6 GROUND IN 2" CONDUIT

11/09/21 - REVISION #1