



WATER POINTS			
Point #	Northing	Easting	Desc.
3000	1683156.17	1602343.08	LINE 1 CONNECTION
3001	1683154.71	1602238.06	LINE 1 90° BEND
3002	1683279.60	1602236.32	LINE 1 BLOWOFF

PLAT POINTS			
Point #	Northing	Easting	Desc.
500	1683605.67	1602236.78	PI
501	1683194.75	1602242.50	PI
502	1683192.12	1601992.52	PI
503	1683018.59	1601994.93	PI
504	1683017.82	1601921.91	PI
505	1682947.83	1601922.88	PI
506	1682943.61	1601522.79	PI
507	1683013.61	1601521.71	PI
508	1683012.62	1601413.41	PI
509	1683415.97	1601407.79	PI
510	1683417.38	1601543.71	PI
511	1683467.00	1601678.18	PI
512	1683600.84	1601831.52	PI
513	1683424.64	1602239.30	LI

**CONTROL POINTS**

BM (CP #1)  
 Top of 5/8" rebar encased in concrete,  
 50 feet south of centerline of 23rd St.  
 70 feet east of east edge of the school exit road  
 35 feet west of centerline of north/south hedge.  
 Elev. = 1444.03' NAVD 88

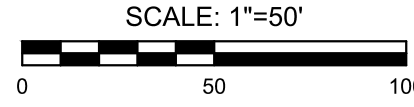
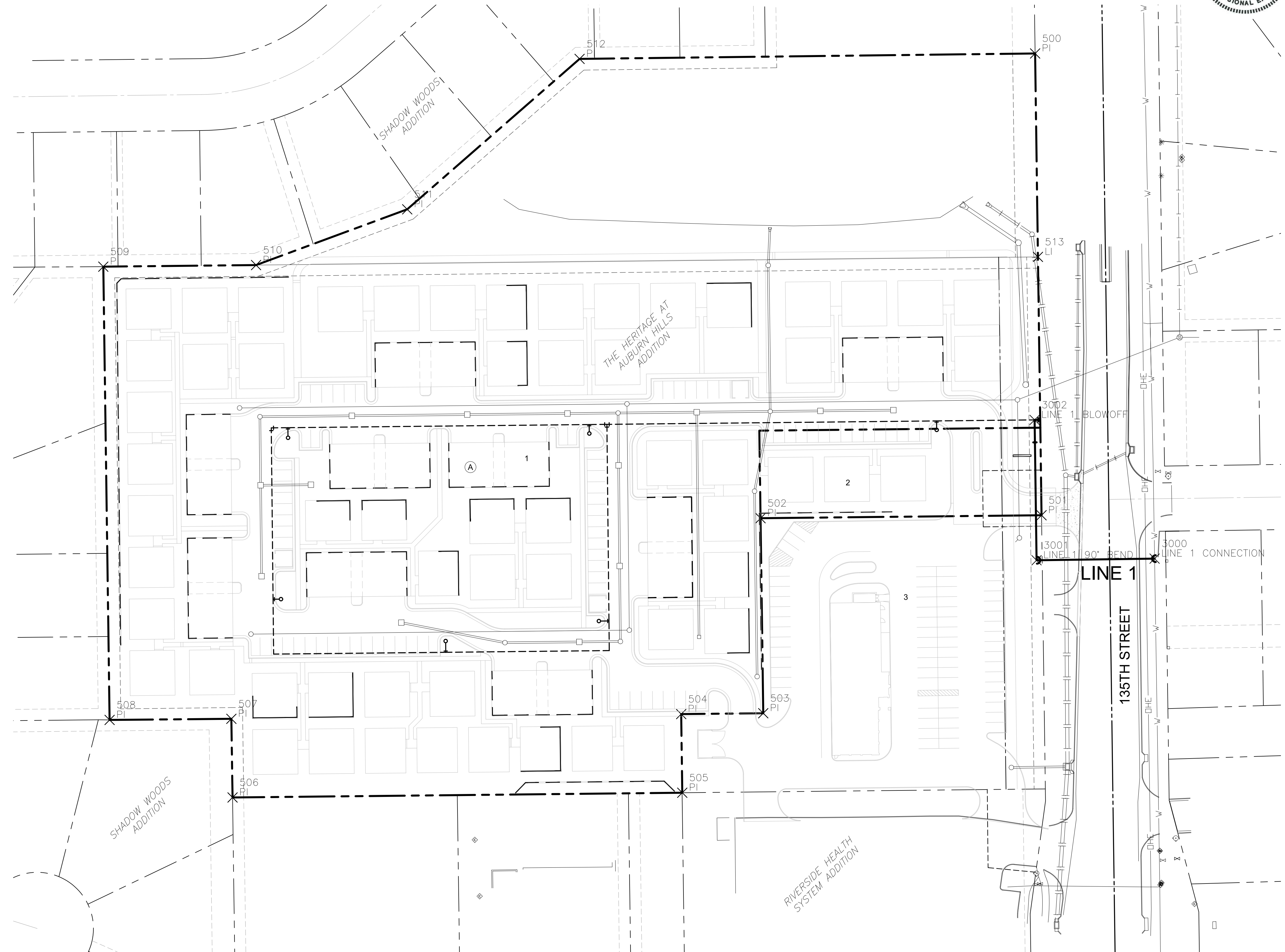
CP #1  
 5/8" rebar in concrete  
 N = 1671759.24 E = 1584158.43 Elevation 1444.03'  
 50 feet south of centerline 23rd St South  
 70 feet east of east edge of school exit road

CP #2  
 5/8" rebar with red MKEC cap  
 N = 1671833.22 E = 1585890.52 Elevation 1440.80'  
 6 feet south of south edge of 23rd St.  
 795 feet west of centerline 183rd St/23rd St intersection  
 90 feet Southeast of centerline end of culvert

CP #3  
 5/8" rebar with red MKEC cap  
 N = 1669986.35 E = 1586340.37 Elevation 1427.21'  
 1870 feet south of 23rd street  
 300 feet west of 183rd street

CP #4  
 5/8" rebar with red MKEC cap  
 N = 1669505.65 E = 1584095.22 Elevation 1448.85'  
 75.15 feet northeast of center of section  
 52.5 feet north of centerline of hedge row  
 49.0 feet east of centerline of hedge row  
 2292 feet south of 23rd St. and 2518 feet west of 183rd St.

Horizontal and Vertical Datum:  
 Horizontal Datum: Kansas Coordinate System 1983 South Zone.  
 (Horizontal coordinates modified to ground using a scale factor of 1.000120014)  
 Vertical Datum: NAVD 88



EVERY ATTEMPT HAS BEEN MADE TO INSURE ALL COORDINATE VALUES SHOWN ARE AN ACCURATE AND TRUE REPRESENTATION OF THE CURRENT PLANS. ALL VALUES ARE TO BE CONFIRMED WITH THE FINAL SIGNED PLAN SET BEFORE USE.

J:\PROJECTS\2020\2001010388\_ICT CAPITAL\_135TH & MARLEND 20338 CAD\SHITS05 CIVIL\WTRPUBLIC\030388 WTR BUBBLE MAP.DWG  
 PLOTTED: Monday, August 30, 2021 @ 10:37AM



WATER DISTRIBUTION PLANS FOR  
**HERITAGE AT AUBURN HILLS ADD.**  
 WICHITA, KANSAS

©2021 MKEC Engineering All Rights Reserved www.mkec.com  
 These drawings and their contents, including, but not limited to, all concepts, designs, & ideas are the exclusive property of MKEC Engineering (MKEC), and may not be used or reproduced in any way without the express consent of MKEC.

**BUBBLE MAP**

PROJECT NO.	448-2019-020416	
DATE	JULY 2021	
SCALE	1"=50'	
DESIGNED	MKB	
DRAWN	CJL	
CHECKED	SPE	
NO.	REVISION	DATE