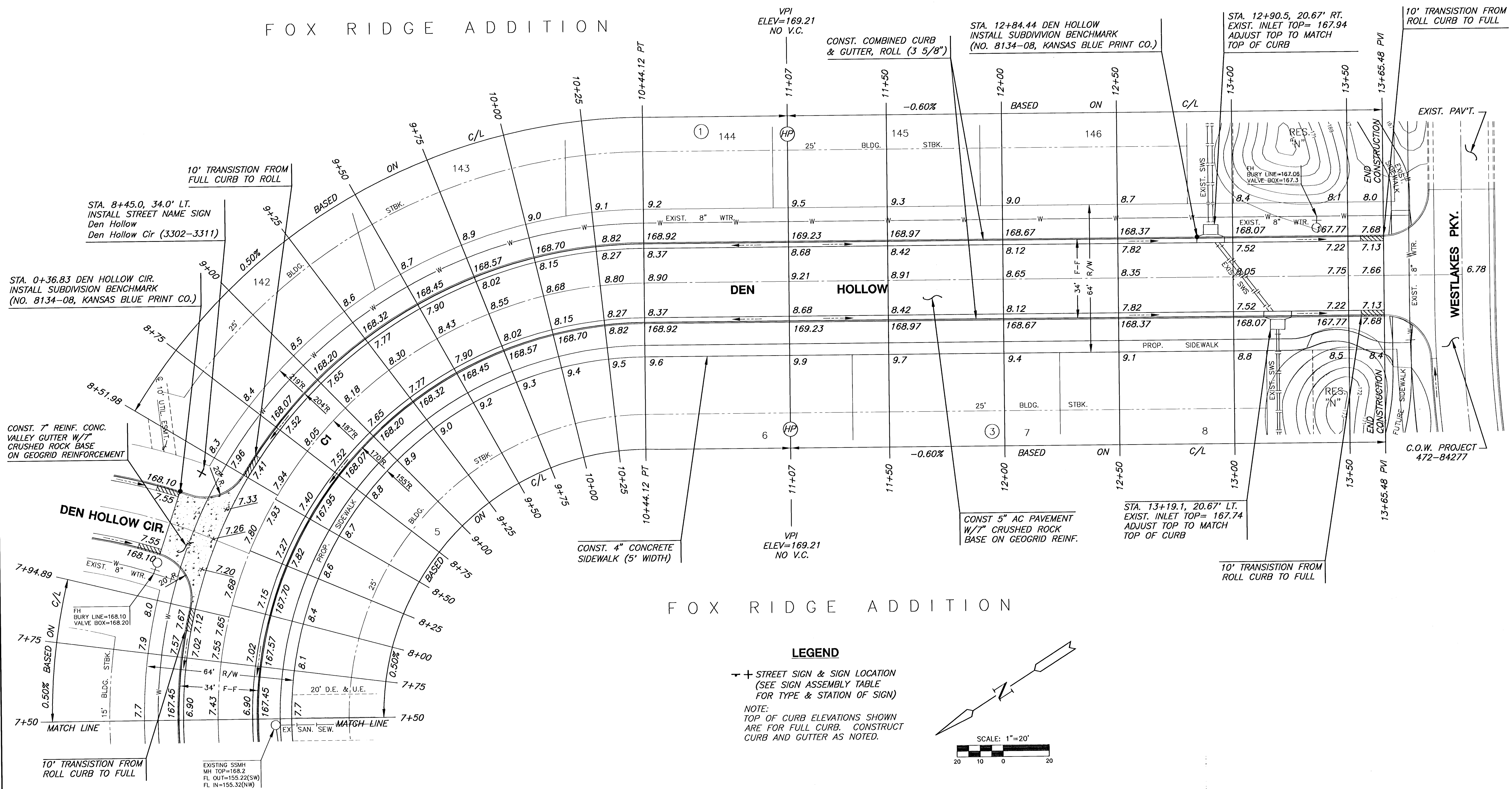


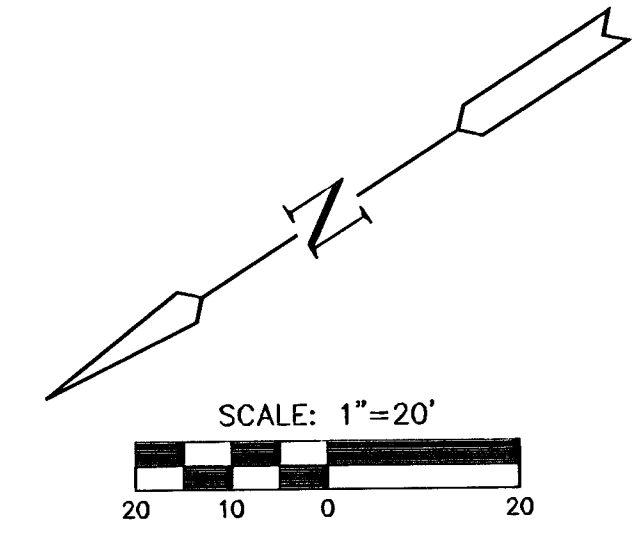
FOX RIDGE ADDITION



FOX RIDGE ADDITION

LEGEND

+ STREET SIGN & SIGN LOCATION
 (SEE SIGN ASSEMBLY TABLE
 FOR TYPE & STATION OF SIGN)
 NOTE:
 TOP OF CURB ELEVATIONS SHOWN
 ARE FOR FULL CURB. CONSTRUCT
 CURB AND GUTTER AS NOTED.



SUBDIVISION BENCH MARKS				
NO.	STREET AND STATION	FROM CL	DESCRIPTION	ELEVATIONS
1	WLD THICKET CT. STA 0+34.98	14.5' RT.	TOP OF CURB AT S. END OF N. RETURN, INTERSECTION OF WLD THICKET	168.16
2	DEN HOLLOW CIR. STA 0+36.83	14.5' RT.	TOP OF CURB AT S.W. END OF N.E. RETURN, INTERSECTION OF DEN HOLLOW	168.10
3	DEN HOLLOW CIR. STA 5+95.86	26.9' RT.	TOP OF CURB AT E. CORNER OF SWS INLET	168.75
4	DEN HOLLOW STA 12+84.44	17.5' LT.	TOP OF CURB AT E. CORNER OF SWS INLET	167.99

NOTE: CONTRACTOR SHALL INSTALL SUBDIVISION BENCH MARKS ("FLAT SURVEY MARKERS NO. 8134-08 3" TOP DIAMETER" PROVIDED BY KANSAS BLUE PRINT CO., INC.) COSTS TO BE CONSIDERED SUBSIDIARY TO CONSTRUCTION OF COMBINED RB AND GUTTER.

FOX RIDGE ADDITION - PHASE 13 - PART 1
PROJECT NAME

WILD THICKET PAVING
SHEET TITLE

DFL DESIGN BY. MKRK DRAWN BY. GJA CHECKED BY.
 SEPTEMBER 2005 99118 DATE JOB NO. 8 / 22 SHEET/OF

8: V:\CAL\98118\DWG\PAV\PH13.PART1\99118E2.DWG