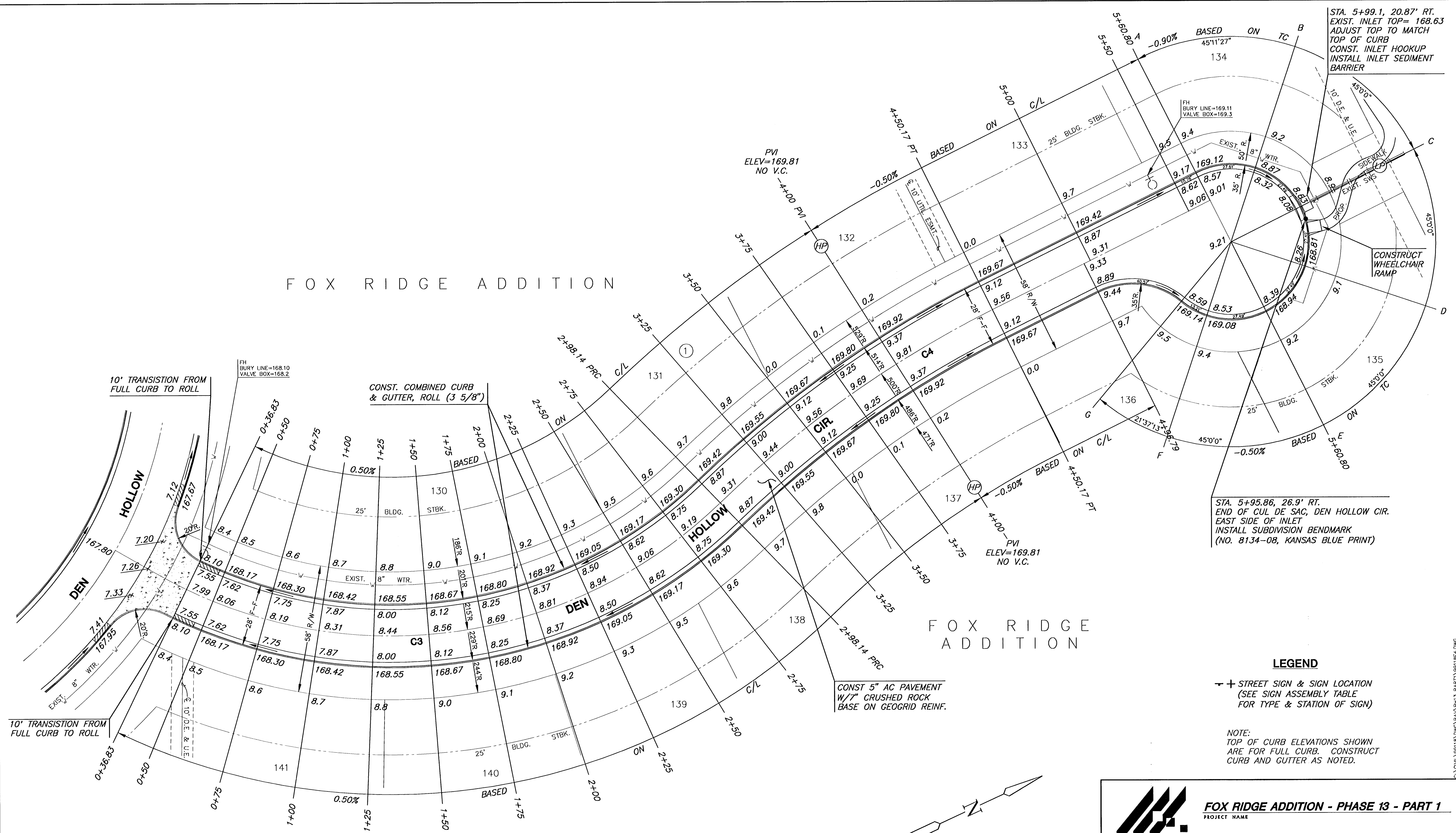


FOX RIDGE ADDITION

FOX RIDGE ADDITION



STA. 5+99.1, 20.87' RT.  
EXIST. INLET TOP= 168.63  
ADJUST TOP TO MATCH  
TOP OF CURB  
CONST. INLET HOOKUP  
INSTALL INLET SEDIMENT  
BARRIER

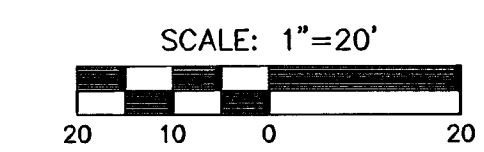
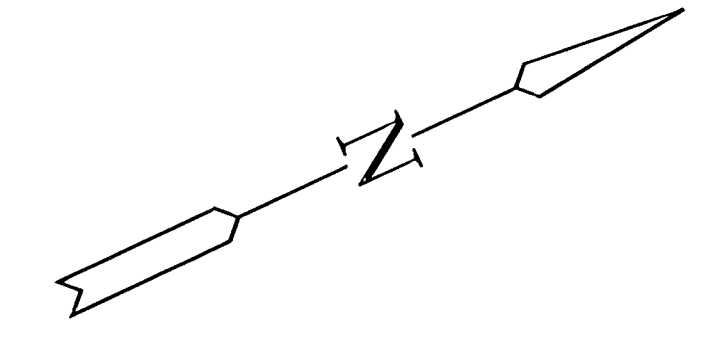
STA. 5+95.86, 26.9' RT.  
END OF CUL DE SAC, DEN HOLLOW CIR.  
EAST SIDE OF INLET  
INSTALL SUBDIVISION BENCHMARK  
(NO. 8134-08, KANSAS BLUE PRINT)

LEGEND

⊕ STREET SIGN & SIGN LOCATION  
(SEE SIGN ASSEMBLY TABLE  
FOR TYPE & STATION OF SIGN)

NOTE:  
TOP OF CURB ELEVATIONS SHOWN  
ARE FOR FULL CURB. CONSTRUCT  
CURB AND GUTTER AS NOTED.

CONST 5" AC PAVEMENT  
W/7" CRUSHED ROCK  
BASE ON GEOGRID REINF.



<p><b>MKEC</b> ENGINEERING CONSULTANTS 411 N. WEBB ROAD WICHITA, KS. 67204 316-684-9600</p>	<p><b>FOX RIDGE ADDITION - PHASE 13 - PART 1</b> PROJECT NAME</p>		
	<p><b>DEN HOLLOW CIRCLE PAVING</b> SHEET TITLE</p>		
	<p>DFL DESIGN BY:</p>	<p>MKrk DRAWN BY:</p>	<p>GJA CHECKED BY:</p>
	<p>SEPTEMBER 2005 DATE</p>	<p>99118 JOB NO.</p>	<p>10 / 22 SHEET/OF</p>

S:\CIVIL\99118.DWG\PAV\PH13.PART1\99118E4.DWG