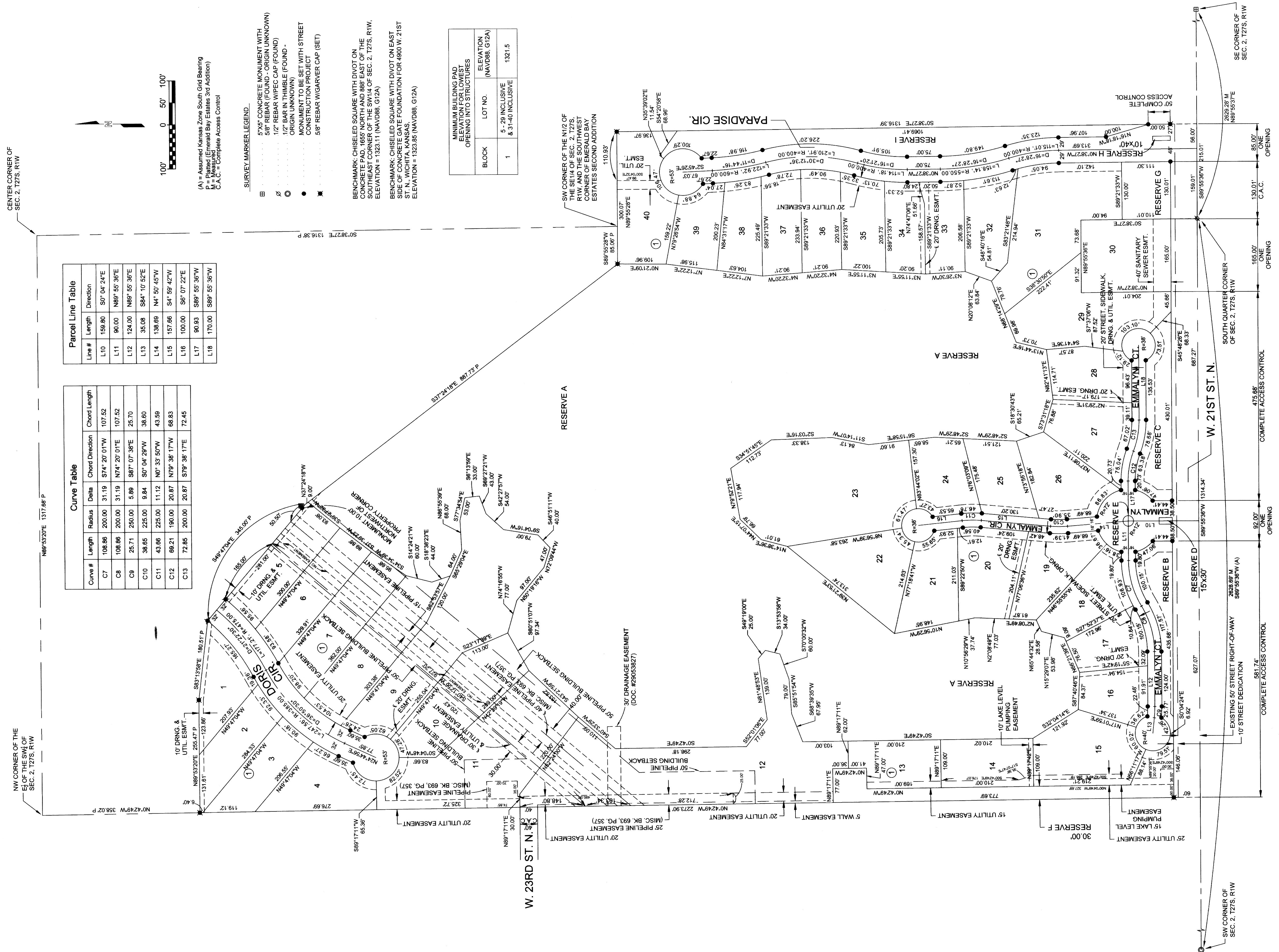


EMERALD BAY ESTATES 4TH ADDITION

Wichita, Sedgwick County, Kansas



Line #	Length	Direction
L10	159.80	S0° 04' 24"E
L11	90.00	N89° 55' 36"E
L12	124.00	N89° 55' 36"E
L13	35.08	S84° 10' 52"E
L14	138.69	N4° 50' 45"W
L15	157.66	S4° 59' 42"W
L16	100.00	S67° 07' 22"E
L17	90.83	S89° 55' 36"W
L18	170.00	S89° 55' 36"W

Curve #	Length	Radius	Delta	Chord Direction	Chord Length
C7	108.86	200.00	31.19	S74° 20' 01"W	107.52
C8	108.86	200.00	31.19	N74° 20' 01"E	107.52
C9	25.71	250.00	5.89	S87° 07' 36"E	25.70
C10	38.65	225.00	9.84	S0° 04' 29"W	38.60
C11	43.86	225.00	11.12	N0° 33' 50"W	43.59
C12	69.21	190.00	20.87	N79° 38' 17"W	68.83
C13	72.85	200.00	20.87	S79° 38' 17"E	72.45

SURVEY MARKER LEGEND

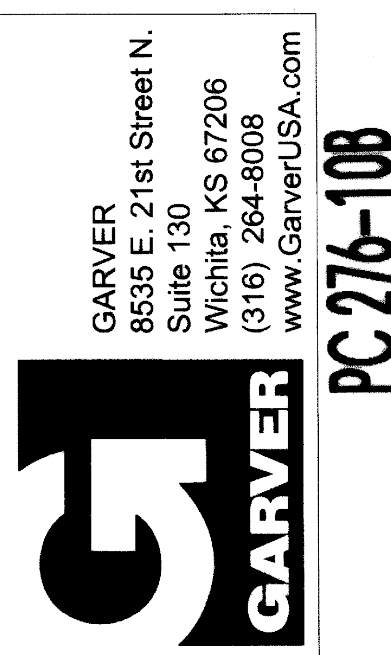
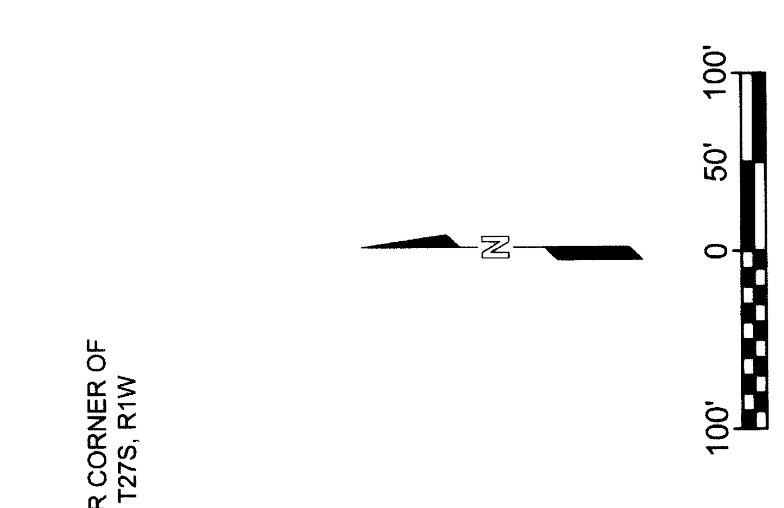
- 5"x5" CONCRETE MONUMENT WITH 5/8" REBAR (FOUND - ORIGIN UNKNOWN)
- 1/2" REBAR WIPEE CAP (FOUND)
- 1/2" BAR IN THIMBLE (FOUND - ORIGIN UNKNOWN)
- MONUMENT TO BE SET WITH STREET CONSTRUCTION PROJECT
- 5/8" REBAR WIGWAG CAP (SET)

(A) = Assumed Kansas Zone South Grid Bearing
 M = Measured
 C.A.C. = Complete Access Control

BENCHMARK: CHISELED SQUARE WITH DIVOT ON CONCRETE PAD, 1655' NORTH AND 888' EAST OF THE SOUTHEAST CORNER OF THE SW1/4 OF SEC. 2, T27S, R1W, ELEVATION = 1323.11 (NAVD88, G12A)

BENCHMARK: CHISELED SQUARE WITH DIVOT ON EAST SIDE OF CONCRETE FOUNDATION FOR 4800 W. 21ST ST. WICHITA, KANSAS, ELEVATION = 1323.85 (NAVD88, G12A)

BLOCK	LOT NO.	ELEVATION (NAVD88, G12A)
1	5 - 29 INCLUSIVE & 31-40 INCLUSIVE	1321.5



GARVER
 8535 E. 21st Street N.
 Suite 130
 Wichita, KS 67206
 PROJECT NO. 18266001
 APRIL 30, 2019
 www.GarverUSA.com

DWG FILE: EMERALD BAY 4TH
 PROJECT NO. 18266001
 APRIL 30, 2019