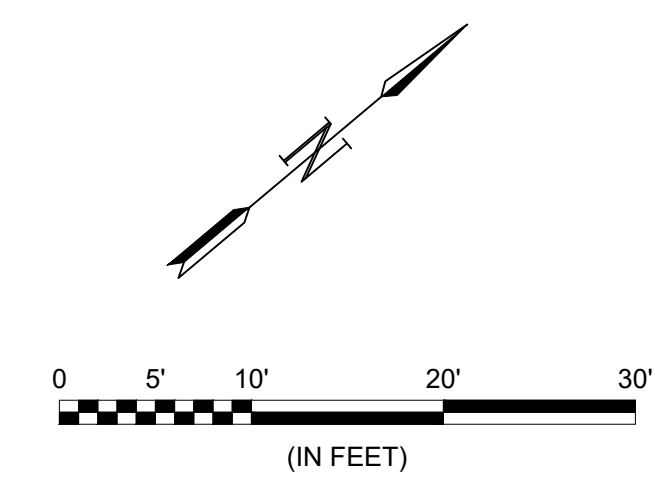
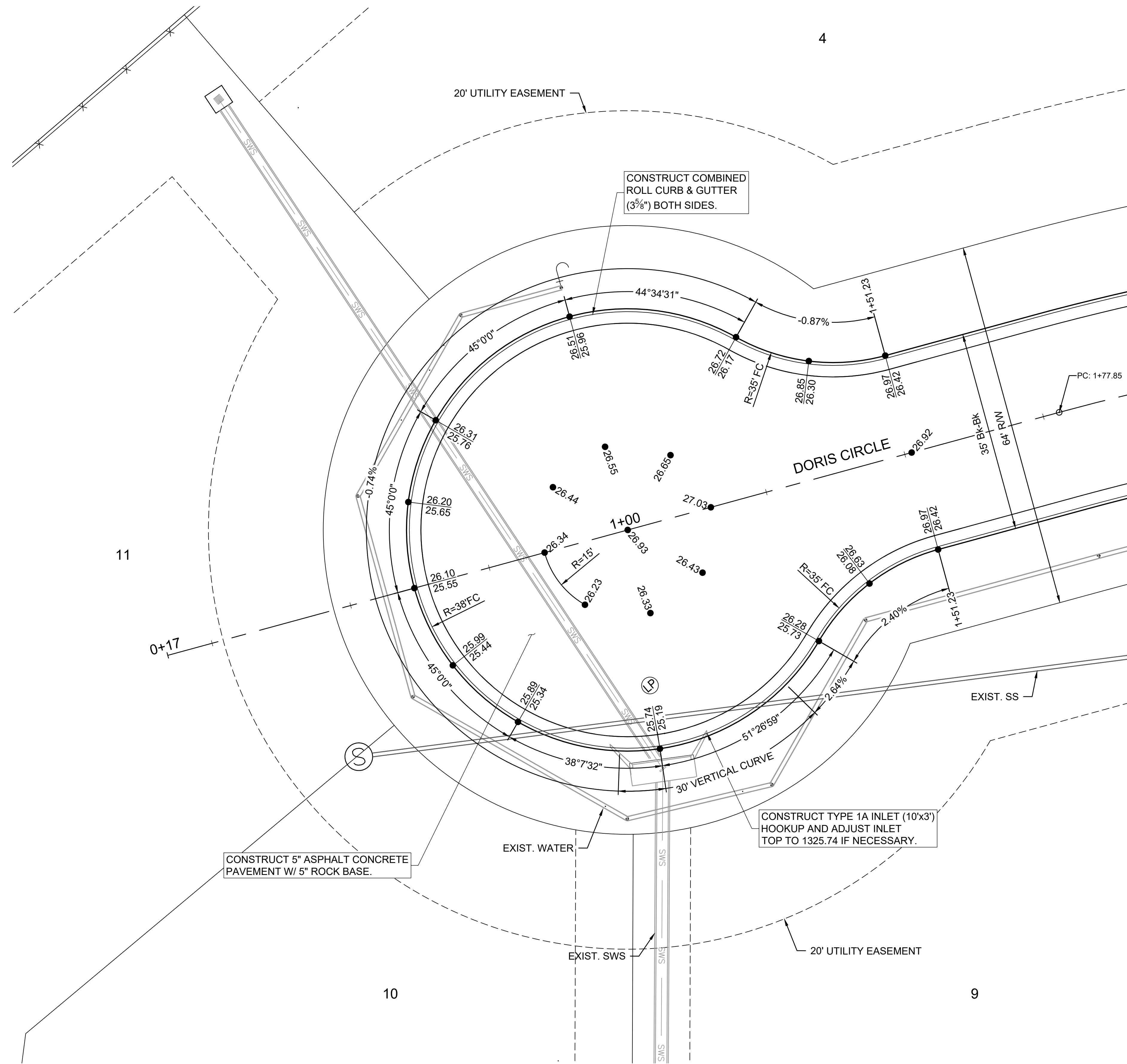


File: L:\2021\12\14\1004 - Emerald Bay 4th Ph. 3D Drawings\C3D\Paving\DORIS CIR_CUL-DE-SAC.dwg, Last Saved: 11/15/2021 3:38 PM, Last saved by: MCarreiaPledra
 Last plotted by: Glover, Eric J., Plot Style: ---, Plot Scale: 1:2,5649, Plot Date: 11/17/2021 8:32 AM, Plotter Used: None



GARVER
 © 2021 GARVER, LLC
 THIS DOCUMENT, ALONG WITH THE IDEAS AND DESIGNS CONVEYED HEREIN, SHALL BE CONSIDERED INSTRUMENTS OF PROFESSIONAL SERVICE AND ARE PROPERTY OF GARVER, LLC. ANY USE, REPRODUCTION, OR DISTRIBUTION OF THIS DOCUMENT, ALONG WITH THE IDEAS AND DESIGN CONTAINED HEREIN, IS PROHIBITED UNLESS AUTHORIZED IN WRITING BY GARVER, LLC OR EXPLICITLY ALLOWED IN THE GOVERNING PROFESSIONAL SERVICES AGREEMENT FOR THIS WORK.

1995 Midfield Road
 Wichita, KS 67209
 (316) 264-8008

REV.	DATE	DESCRIPTION	BY

CITY OF WICHITA
 WICHITA, KANSAS
PAVING PLANS
 EMERALD BAY 4TH, PHASE 3

DORIS CIR.
(CUL-DE-SAC)

JOB NO.: 21T41004
 DATE: NOV. 2021
 DESIGNED BY: .
 DRAWN BY: .

BAR IS ONE INCH ON ORIGINAL DRAWING
 IF NOT ONE INCH ON THIS SHEET, ADJUST SCALES ACCORDINGLY.

DRAWING NUMBER

SHEET NUMBER **5** OF **24**