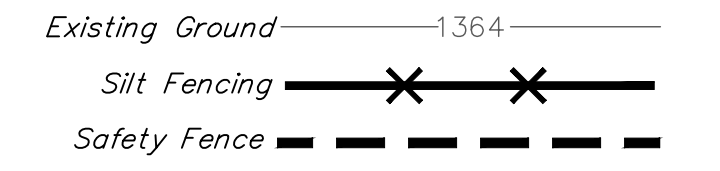
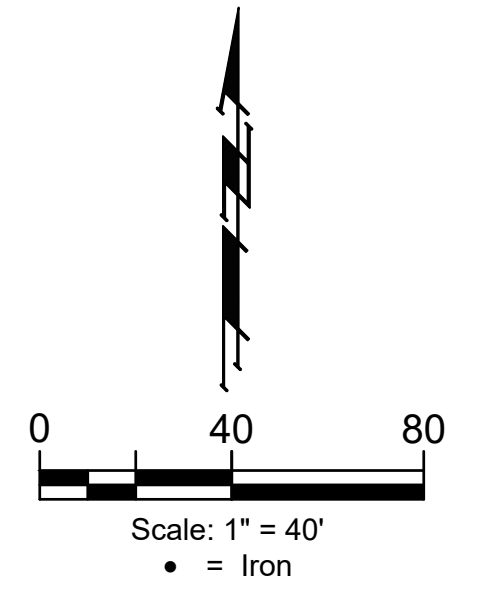
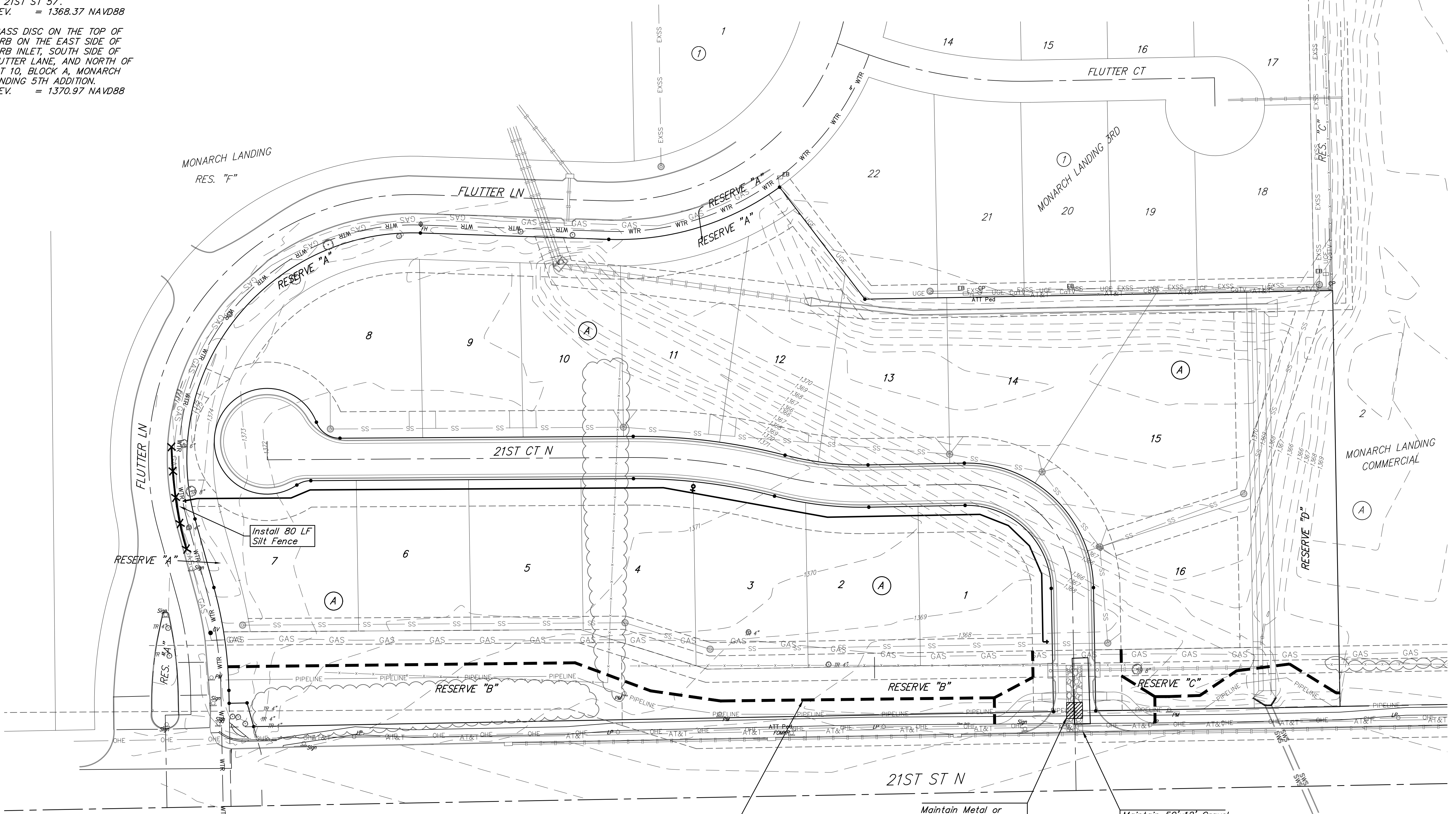


BENCHMARK:
 CITY OF WICHITA BENCHMARK
 DISC ON THE WEST END OF
 THE RCBC HEADWALL, NORTH
 OF 21ST ST 57".
 ELEV. = 1368.37 NAVD88

BRASS DISC ON THE TOP OF
 CURB ON THE EAST SIDE OF
 CURB INLET, SOUTH SIDE OF
 FLUTTER LANE, AND NORTH OF
 LOT 10, BLOCK A, MONARCH
 LANDING 5TH ADDITION.
 ELEV. = 1370.97 NAVD88



NOTES:
 Contractor shall make sure all erosion control is in place before project is accepted. This plan represents the minimum standard. Any additional erosion control measures shall be installed by the Contractor as needed.
 All areas disturbed during construction shall be seeded, mulched, and fertilized as per Cover Sheet General Notes.



Install 80 LF Silt Fence

Maintain 920 L.F. Safety Fence, 10' N of NuStar Pipeline.

Maintain Metal or Timber Air Bridge, 6' from either side of the NuStar Pipeline.

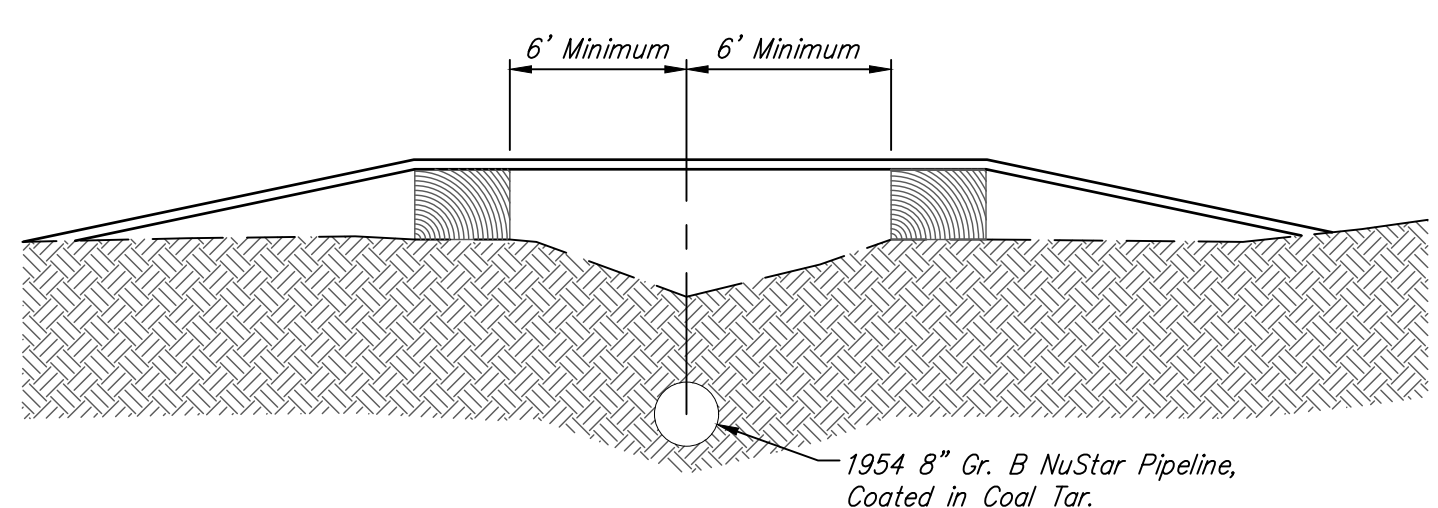
Maintain 50'x12' Gravel Construction Entrance. (Gravel Not To Be Placed Underneath Air Bridge.)

Contractor to verify depth and location of NuStar Pipeline prior to construction. Contact J.B. Smith (316-321-3500) a minimum of two weeks prior to construction.

EROSION CONTROL MEASURE	INSTALL	MAINTAIN
SAFETY FENCE (LF)	0	920
CONSTRUCTION ENTRANCE (EA)	0	1
SILT FENCE (LF)	80	0

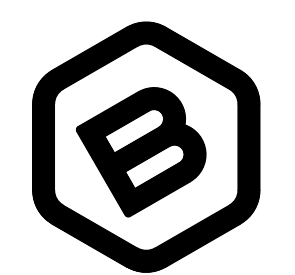
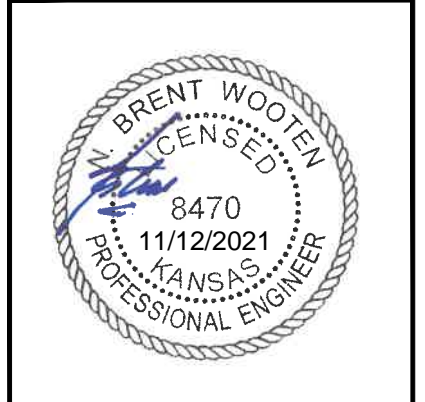
* ALL EXISTING BMPs INCLUDING CONSTRUCTION ENTRANCE, SEDIMENT BARRIERS, SILT FENCE, CUT-OFF TRENCH, AND EROSION CONTROL MAT SHALL BE MAINTAINED AND REPAIRED IF NECESSARY.

AIR BRIDGE DETAIL



- Notes:
- 1) Air bridge to be constructed with metal or timber.
 - 2) Air bridge must span 6' minimum from centerline of NuStar Pipeline.

NOTE: Contractor May Only Cross NuStar Pipeline Using the Proposed Air Bridge.



BAUGHMAN COMPANY
 315 Ellis St.
 Wichita, KS 67211
 316-262-7271
 BaughmanCo.com

MONARCH LANDING
 5TH ADDITION

EROSION CONTROL

WATER DISTRIBUTION SYSTEM
 PROJECT NUMBER:
 448-2021-022635
 DESIGN: NBW DRAWN: CDW
 DATE: Nov. 4, 2021
 SHEET OF
5 12