

Lateral 4, Main 23, FMC SANITARY SEWER IMPROVEMENTS

to serve

MONARCH LANDING 5TH ADDITION CITY OF WICHITA, KANSAS

Gary Janzen, P.E. City Engineer
Project Number: 468-2021-022637
Org Code Number: 47215721
Munis Number: E1086

GENERAL NOTES:

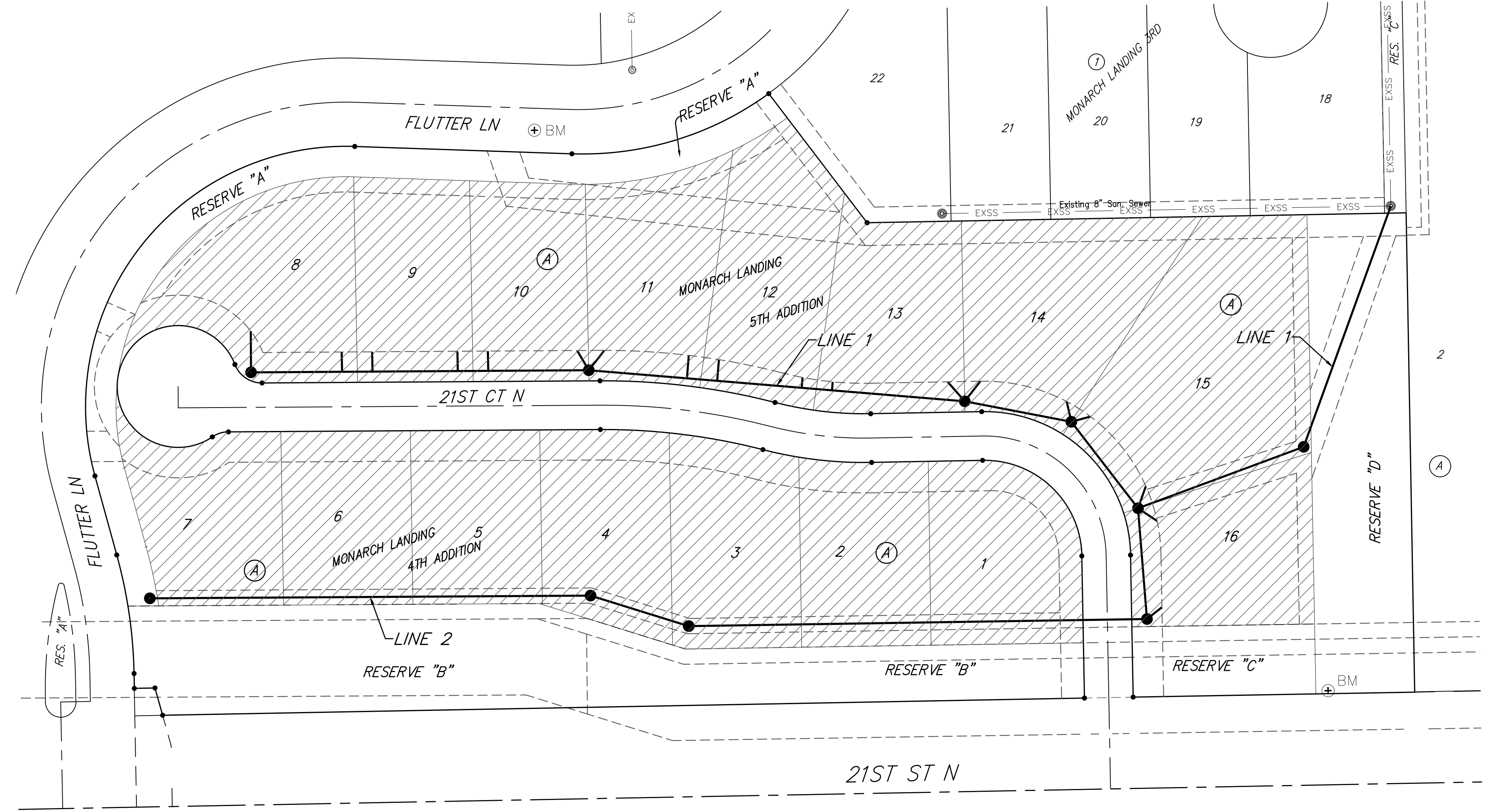
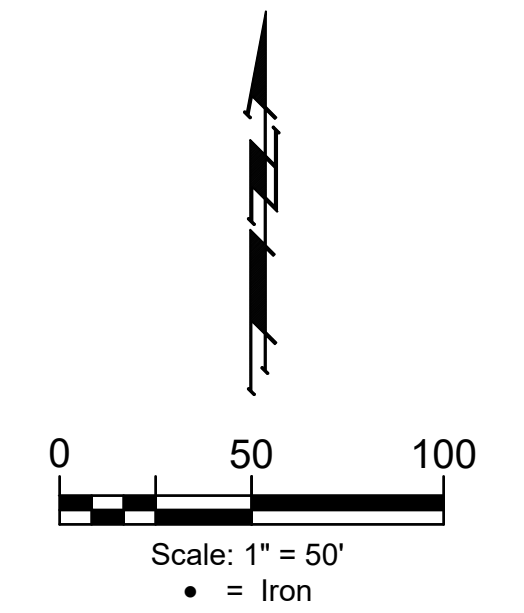
- Contractor will be required to provide notice to utility companies a minimum of forty-eight (72) hours prior to any excavation, as follows:

Kansas One-Call 687-2470

The Contractor must notify the following in case of an emergency:

Cox Communications 262-4270
Kansas Gas Service 1-888-482-4950
Everg 383-8650
Aquila Energy 1-800-303-0357
ATT 268-2245
City of Wichita Water Dept. 268-4563
City of Wichita Sewer Maint. 268-4024
City of Wichita Storm Sewer Maint. 268-4090
City of Wichita Traffic Maint. 268-4034
Conoco Phillips Pipeline Co. 1-877-267-2290
Southern Star Pipeline Co. 529-6600
Kinder-Morgan Pipeline Co. 1-888-844-5658
- Utility service lines, poles, valve boxes, meters, and etcetera are to be adjusted as necessary by others prior to construction unless the plans specifically call for their adjustment by the Contractor or unless the plans specifically identify a utility to be adjusted by its owner during construction. Existing utilities and their location, as shown on the plans, represent the best information obtainable for design. The Contractor will be required to work around existing utilities within the right-of-way which do not conflict with proposed construction.
- Rubble from the removal of miscellaneous structures and excess excavation which is to be wasted shall be disposed of on sites to be provided by the Contractor. These sites shall be approved by the Engineer as to suitability, appearance and site location. Locations, in the opinion of the Engineer, that will leave an unsightly appearance will not be approved. All disposal sites must be approved by the Kansas Department of Health and Environment. Material either stockpiled or disposed of in a flood plain would require a Kansas State Board of Agriculture permit. Any material dumped in waters of the United States or wetlands is subject to U.S. Corps. of Engineers permitting regulations. Any material buried or stockpiled beyond approved construction limits would require additional archaeological investigations unless buried in a previously approved borrow location.
- Trees and shrubs in public right-of-way which are in direct conflict with proposed new construction shall be removed by the Contractor with the Engineer's approval. Trees and shrubs which are not in direct conflict with proposed new construction shall be saved and protected from damage.
- The Contractor shall give all property owners and/or tenants of developed property abutting the construction of this project a minimum of ten (10) days notice prior to start of construction.
- The Contractor shall be responsible for preserving property irons. The Contractor will be required to re-establish any property irons which are damaged or destroyed by his construction operations. Such irons shall be re-established by a licensed land surveyor in accordance with state laws.
- All existing and proposed erosion control measures including silt fencing, erosion control mat, straw bales, inlet barriers, and const. entrance shall be maintained throughout construction by the contractor and until project is accepted by the City of Wichita. The on-site engineer shall complete weekly reports on the status of erosion control measures. The contractor shall be required to comply with maintenance and/or replacement of erosion control measures as determined by the on-site engineer until project is accepted by City of Wichita. Maintenance and/or replacement of erosion control measures to be paid by L.S. bid item "Maintain Existing BMP's."
- All excess excavation shall remain on-site and shall be stockpiled or spread at a location determined by the engineer.
- The Contractor shall be responsible for maintaining continuous flow of sewage through construction. Contractor's proposed method for maintaining sewage flow shall be approved by the Engineer. Cost of maintaining flow of sewage through construction will not be paid for directly and this cost shall be considered as subsidiary to the other pay items of work.
- All areas disturbed by construction are to be seeded as follows:
Seed -- Rye grass; 5 lbs./1000 Sq. Ft.

All costs associated with seeding including mobilization, preparation of ground, seeding, fertilizing, mulching, etc. shall be included in the L.S. bid item "Seeding".
- Trees and shrubs in the work area which are in direct conflict with proposed new construction shall be removed by the Contractor ONLY with the Developer or Baughman Company approval. Trees and shrubs which are not in direct conflict with proposed new construction shall be saved and protected from damage. If trimming is necessary, a chainsaw shall be used. Breaking limbs with equipment will not be allowed. An on-site pre-construction meeting will occur prior to any construction to discuss tree removal, tree protection, and tree trimming.
- Air Bridge Requirements:
a) The contractor shall supply all material required to construct the air bridge.
b) The contractor shall construct the air bridge at proposed location.
c) The contractor shall pick up the materials from the paving contractor post construction of the concrete entrance drive.
- The Developer for this project is Paul Gray
2024 N Woodlawn Blvd Suite 200, Wichita, KS 67208
(316) 978-9047 email: paul@grayconbg.com



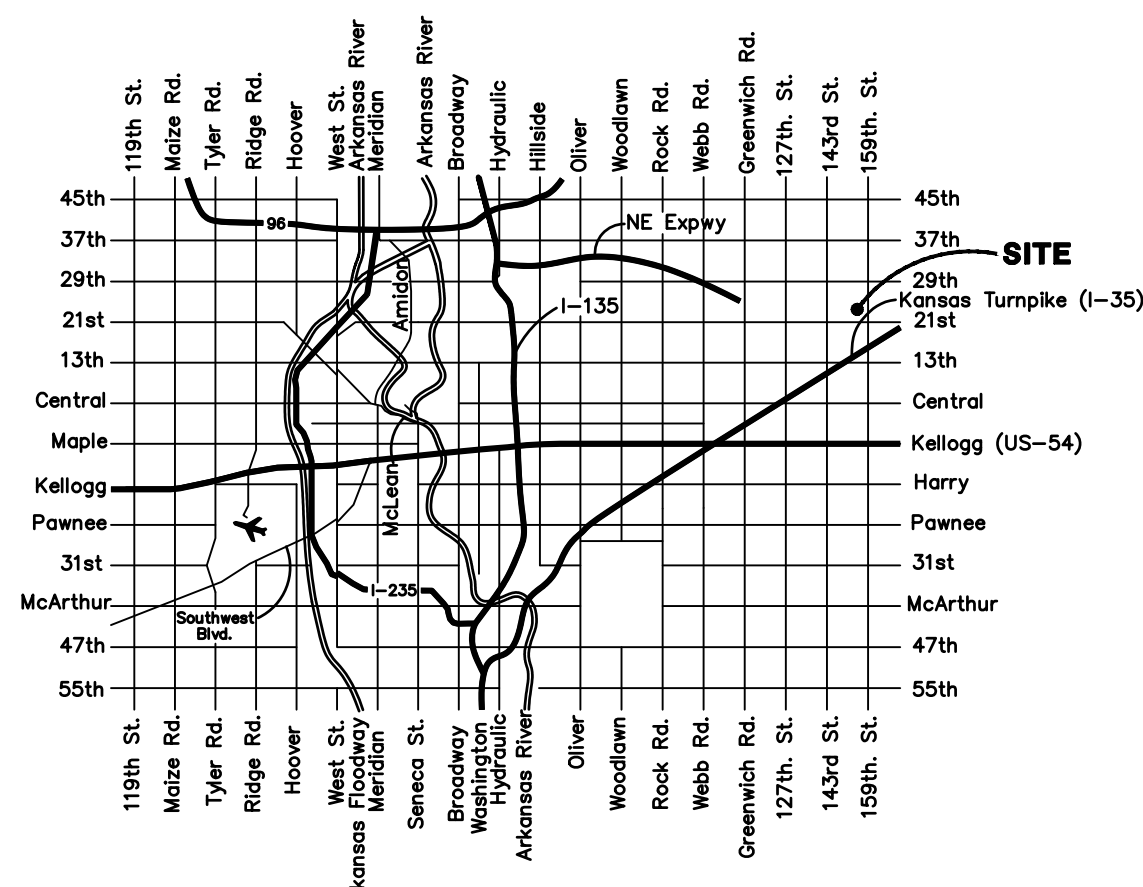
SHEET INDEX

Title Sheet	1
Line 1	2
Line 2	3
Erosion Control Plan	4
Erosion Control BMP Details	5-9
Standard Manhole Detail	10
Frame & Cover Detail	11
Vertical Riser Detail	12
Coordinate Sheet	13
Copy of Plat	14

BENCHMARKS

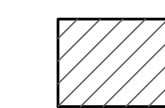
CITY OF WICHITA BENCHMARK
DISC ON THE WEST END OF
THE RCBC HEADWALL, NORTH
OF 21ST ST 57'.
ELEV. = 1368.37 NAVD88

BRASS DISC ON THE TOP OF
CURB ON THE EAST SIDE OF
CURB INLET, SOUTH SIDE OF
FLUTTER LANE, AND NORTH OF
LOT 10, BLOCK A, MONARCH
LANDING 5TH ADDITION.
ELEV. = 1370.97 NAVD88



Vicinity Map

BENEFIT DISTRICT



BAUGHMAN COMPANY
315 Ellis St. Wichita, KS 67211 316-262-7271
BaughmanCo.com

Nov. 4, 21

E:\Projects\Monarch Landing 5th Addition - Engineering\SS_17-07-EZ28.dwg