

**BENCHMARK:**  
 CITY OF WICHITA BENCHMARK  
 DISC ON THE WEST END OF  
 THE RCBC HEADWALL, NORTH  
 OF 21ST ST 57'.  
 ELEV. = 1368.37 NAVD88

BRASS DISC ON THE TOP OF  
 CURB ON THE EAST SIDE OF  
 CURB INLET, SOUTH SIDE OF  
 FLUTTER LANE, AND NORTH OF  
 LOT 10, BLOCK A, MONARCH  
 LANDING 5TH ADDITION.  
 ELEV. = 1370.97 NAVD88

Sta. 1+68.2, Line 1  
 Const. Standard Manhole  
 2-4" Stubs w/  
 Risers (NE & SE)  
 Top Elev. = 1368.50

Remove and replace existing wood fence  
 only as necessary for construction.  
 Cost to be included in "Site Clearing"

CAUTION!  
 Every, Cox, &  
 AT&T Near

Contractor shall repair any damaged  
 irrigation lines or sprinkler heads  
 and sod to match any disturbed  
 turf in developed adjacent lots or  
 right-of-ways due to construction  
 activity. Cost shall be included in  
 "Site Restoration".

Sta. 0+00, Begin Line 1  
 Core Existing Manhole and  
 Extend 8" Pipe Southwest  
 Reshape invert as necessary.  
 Contractor to Verify Depth  
 and Location of Existing  
 Manhole Prior to Construction.  
 Ex MH Rim = 1368.06

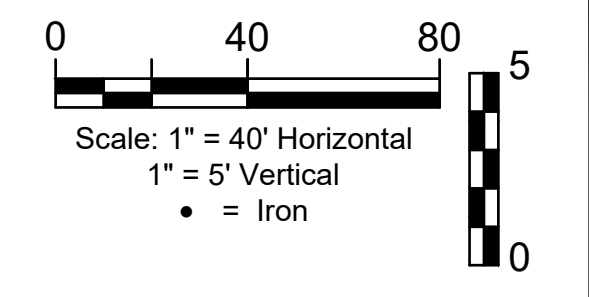
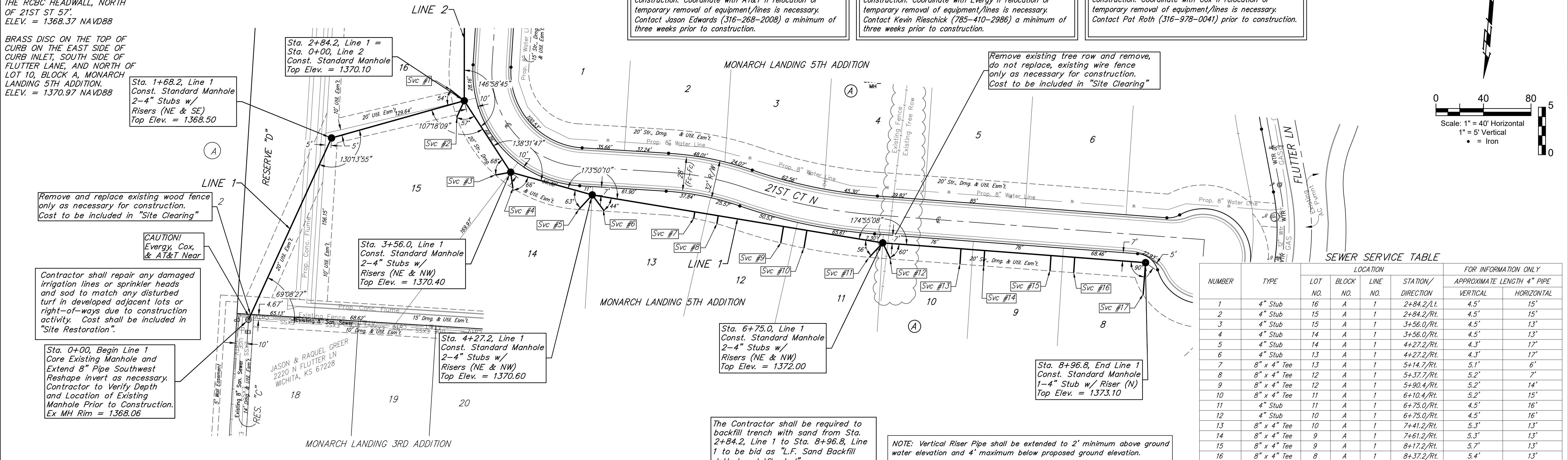
Jason & Raquel Greer  
 2220 N FLUTTER LN  
 WICHITA, KS 67228

Contractor to verify depth and location of AT&T prior to  
 construction. Coordinate with AT&T if relocation or  
 temporary removal of equipment/lines is necessary.  
 Contact Jason Edwards (316-268-2008) a minimum of  
 three weeks prior to construction.

Contractor to verify depth and location of Every prior to  
 construction. Coordinate with Every if relocation or  
 temporary removal of equipment/lines is necessary.  
 Contact Kevin Rieschick (785-410-2986) a minimum of  
 three weeks prior to construction.

Contractor to verify depth and location of Cox prior to  
 construction. Coordinate with Cox if relocation or  
 temporary removal of equipment/lines is necessary.  
 Contact Pat Roth (316-978-0041) prior to construction.

Remove existing tree row and remove,  
 do not replace, existing wire fence  
 only as necessary for construction.  
 Cost to be included in "Site Clearing"

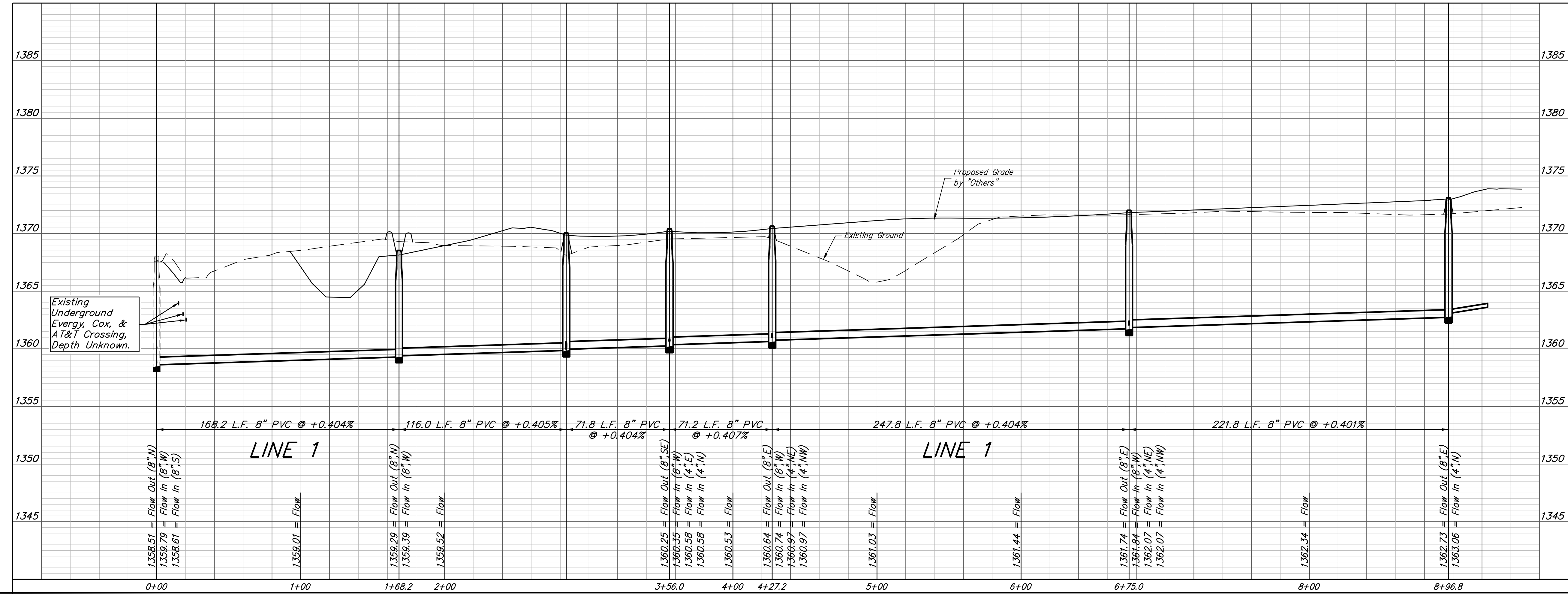


SEWER SERVICE TABLE

NUMBER	TYPE	LOCATION				FOR INFORMATION ONLY	
		LOT NO.	BLOCK NO.	LINE NO.	STATION/ DIRECTION	APPROXIMATE LENGTH 4" PIPE VERTICAL	HORIZONTAL
1	4" Stub	16	A	1	2+84.2/Lt.	4.5'	15'
2	4" Stub	15	A	1	2+84.2/Rt.	4.5'	15'
3	4" Stub	15	A	1	3+56.0/Rt.	4.5'	13'
4	4" Stub	14	A	1	3+56.0/Rt.	4.5'	13'
5	4" Stub	14	A	1	4+27.2/Rt.	4.3'	17'
6	4" Stub	13	A	1	4+27.2/Rt.	4.3'	17'
7	8" x 4" Tee	13	A	1	5+14.7/Rt.	5.1'	6'
8	8" x 4" Tee	12	A	1	5+37.7/Rt.	5.2'	7'
9	8" x 4" Tee	12	A	1	5+90.4/Rt.	5.2'	14'
10	8" x 4" Tee	11	A	1	6+10.4/Rt.	5.2'	15'
11	4" Stub	11	A	1	6+75.0/Rt.	4.5'	16'
12	4" Stub	10	A	1	6+75.0/Rt.	4.5'	16'
13	8" x 4" Tee	10	A	1	7+41.2/Rt.	5.3'	13'
14	8" x 4" Tee	9	A	1	7+61.2/Rt.	5.3'	13'
15	8" x 4" Tee	9	A	1	8+17.2/Rt.	5.2'	13'
16	8" x 4" Tee	8	A	1	8+37.2/Rt.	5.4'	13'
17	4" Stub	8	A	1	8+96.8/Rt.	4.5'	27'

The Contractor shall be required to  
 backfill trench with sand from Sta.  
 2+84.2, Line 1 to Sta. 8+96.8, Line  
 1 to be bid as "L.F. Sand Backfill  
 Jetted and Vibrated"

NOTE: Vertical Riser Pipe shall be extended to 2' minimum above ground  
 water elevation and 4' maximum below proposed ground elevation.



**BAUGHMAN COMPANY**

315 Ellis St.  
 Wichita, KS 67211  
 316-262-7271  
 BaughmanCo.com

MONARCH LANDING  
 5TH ADDITION

**LINE 1**

SANITARY SEWER  
 IMPROVEMENTS

PROJECT NUMBER:  
 468-2021-022637

DESIGN: NBW DRAWN: CDW

DATE: Nov. 4, 2021

SHEET OF  
**2 14**

File: E:\Projects\Monarch Landing 5th Addition - Engineering\SS-17-07-E728.dwg