

**BENCHMARK:**  
CITY OF WICHITA BENCHMARK  
DISC ON THE WEST END OF  
THE RCBC HEADWALL, NORTH  
OF 21ST ST 57'.  
ELEV. = 1368.37 NAVD88

BRASS DISC ON THE TOP OF  
CURB ON THE EAST SIDE OF  
CURB INLET, SOUTH SIDE OF  
FLUTTER LANE, AND NORTH OF  
LOT 10, BLOCK A, MONARCH  
LANDING 5TH ADDITION.  
ELEV. = 1370.97 NAVD88

Sta. 0+82.5 to Sta. 1+15.5  
Install 33.0 L.F. Flowable Fill  
Per City Specifications.  
Fill to Elev. 1367.10

Sta. 3+74.0, Line 2  
Const. Standard Manhole  
Top Elev. = 1370.40

Sta. 7+30.9, End Line 2  
Const. Standard Manhole  
Top Elev. = 1373.30

Sta. 0+73.0, Line 2  
Const. Standard Manhole  
1-4" Stub w/ Riser (NE)  
Top Elev. = 1370.00

Sta. 0+00, Begin Line 2  
= Sta. 2+84.2, Line 1  
Top Elev. = 1370.10

Sta. 4+41.5, Line 2  
Const. Standard Manhole  
Top Elev. = 1371.70

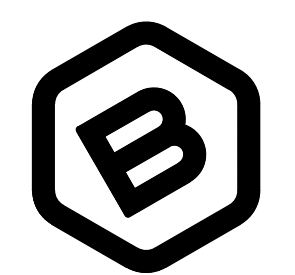
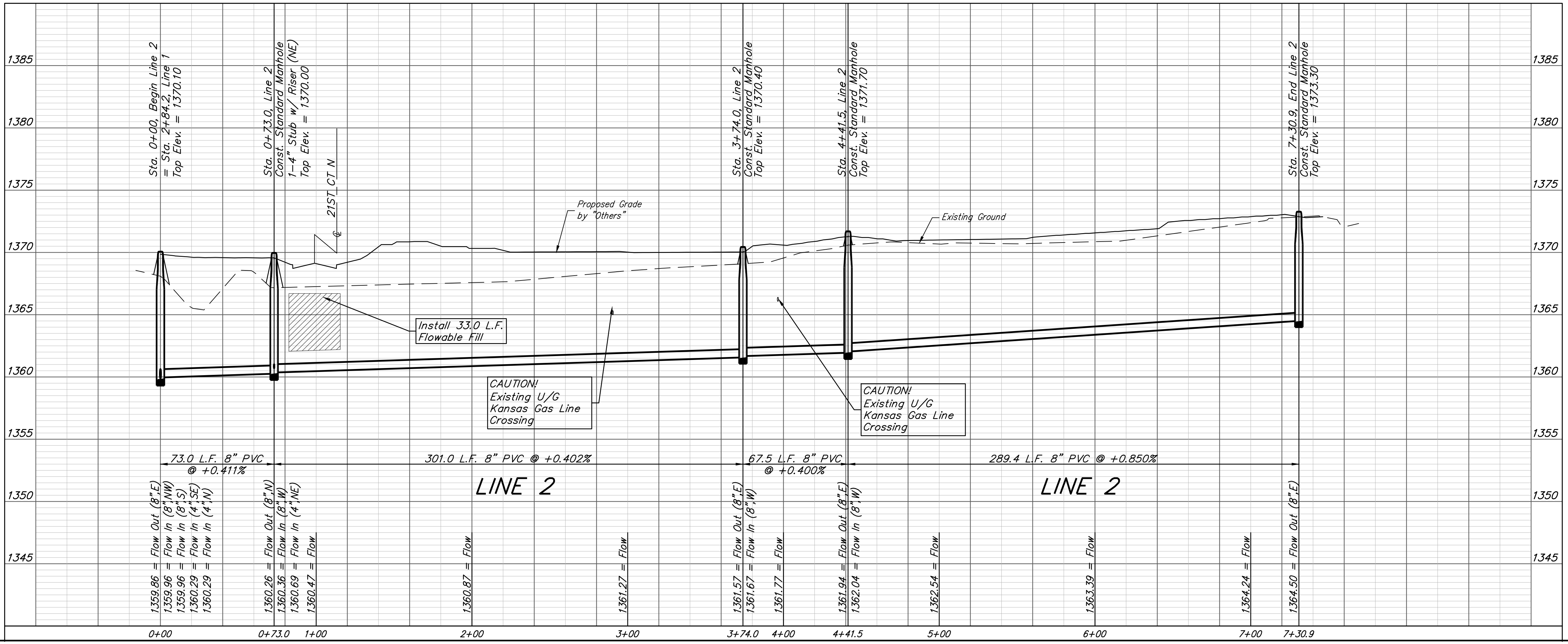
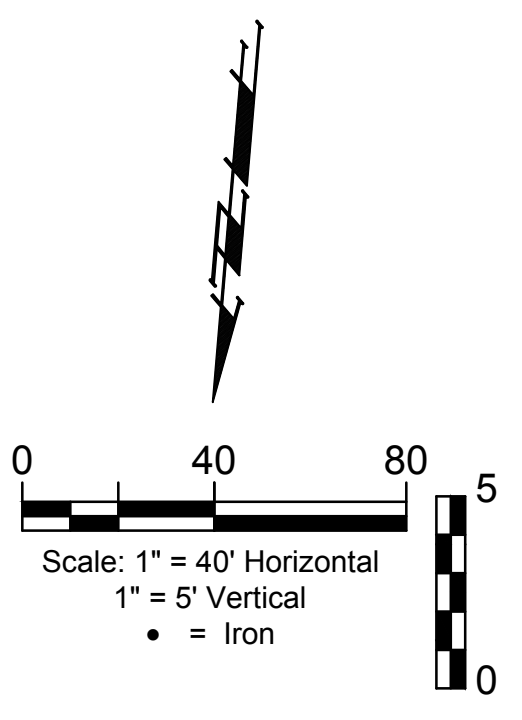
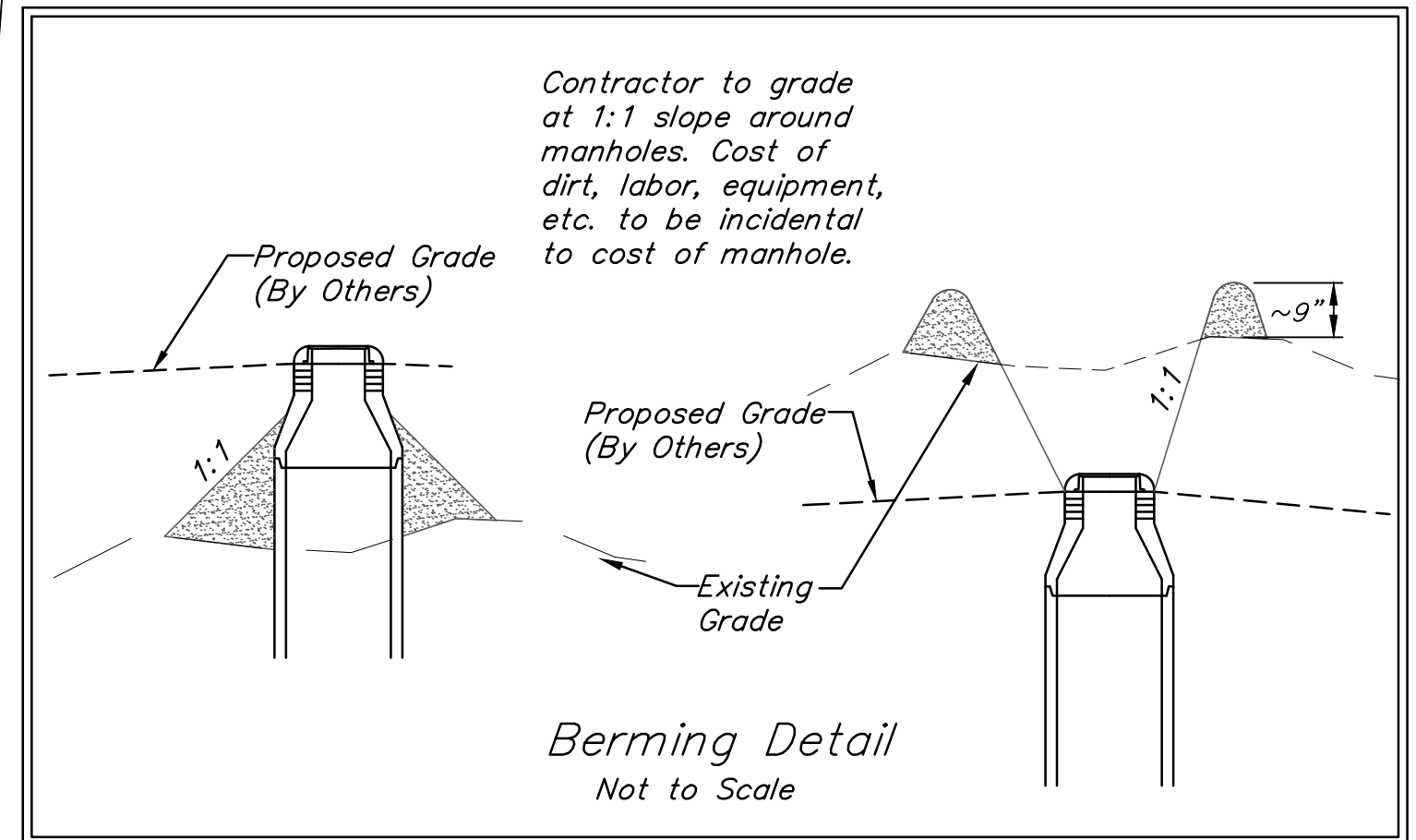
Remove existing tree row and remove,  
do not replace, existing wire fence  
only as necessary for construction.  
Cost to be included in "Site Clearing"

**SEWER SERVICE TABLE**

NUMBER	TYPE	LOCATION				FOR INFORMATION ONLY	
		LOT NO.	BLOCK NO.	LINE NO.	STATION/DIRECTION	APPROXIMATE LENGTH 4" PIPE	
18	4" Stub	16	A	1	2+84.2/Lt.	VERTICAL 4.0'	HORIZONTAL 15'

NOTE: Vertical Riser Pipe shall be extended to 2' minimum above ground water elevation and 4' maximum below proposed ground elevation.

The Contractor shall be required to  
backfill trench with sand from Sta.  
0+00, Line 2 to Sta. 0+73.0, Line 2  
to be bid as "L.F. Sand Backfill  
Jetted and Vibrated"



**BAUGHMAN  
COMPANY**

315 Ellis St.  
Wichita, KS 67211  
316-262-7271  
BaughmanCo.com

MONARCH LANDING  
5TH ADDITION

**LINE 2**

SANITARY SEWER  
IMPROVEMENTS

PROJECT NUMBER:  
468-2021-022637

DESIGN: NBW DRAWN: CDW

DATE: Nov. 4, 2021

SHEET OF  
**3 14**

File: E:\Projects\Monarch Landing 5th Addition - Engineering\SS-17-07-ET28.dwg