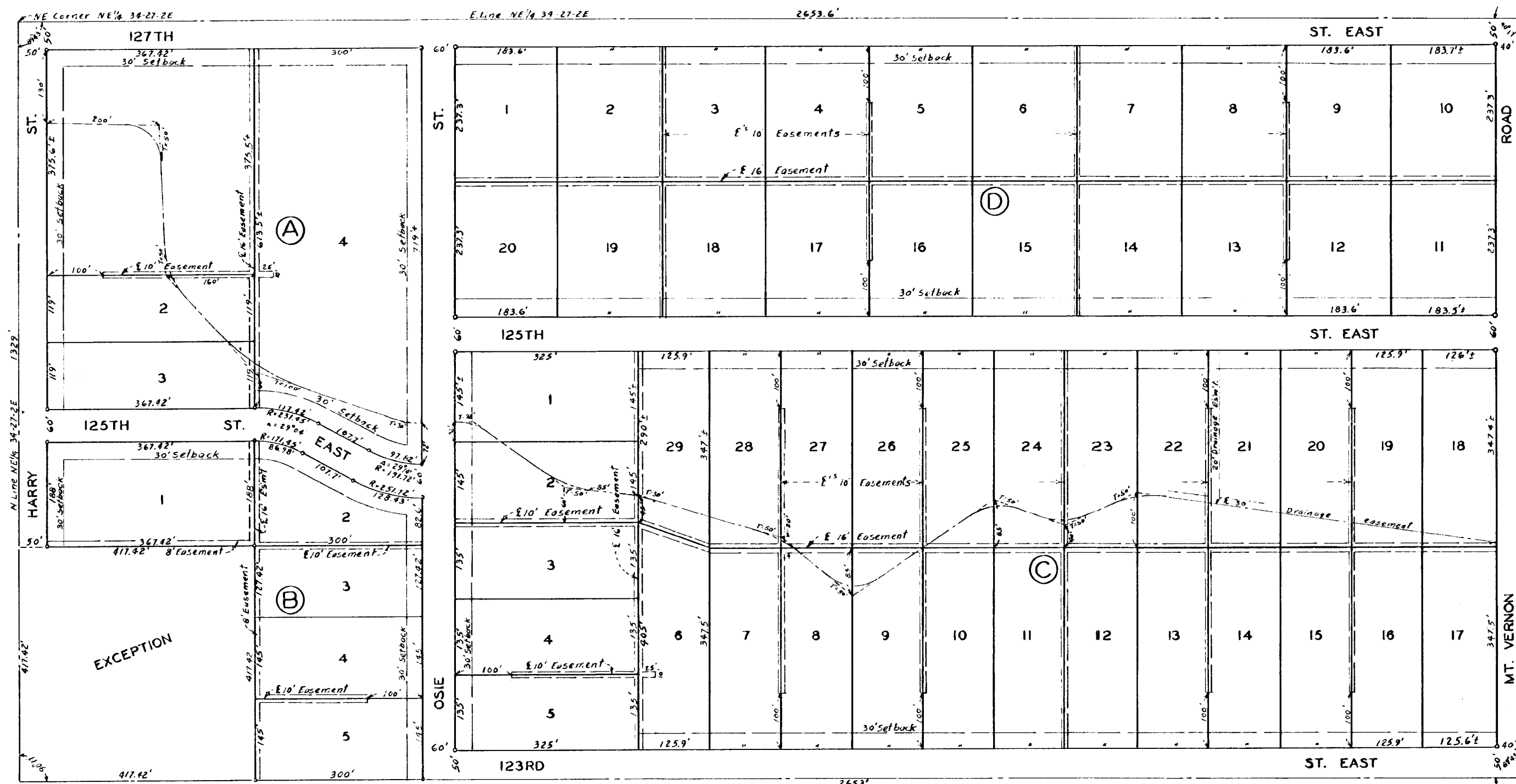


Mc EVOY ADDITION  
SEDGWICK COUNTY, KANSAS



State of Kansas }  
County of Sedgewick } ss  
I, Kenneth D. Taylor, Civil Engineer in and for said county and state do here  
by certify that I have surveyed and plotted the above Addition to Sedgewick County,  
Kansas and that the accompanying plat is a true and correct exhibit of said survey  
as shown. The plat of the NE 1/4 of Section 14, T15S, R12E of the 1st PM  
except as to that portion occupied by Harry St. and the NE 1/4 of said  
NE 1/4 shown east on the Northwest of said NE 1/4, were's lines were parallel to the west  
line of said East 1/2 of said NE 1/4, were's lines were parallel to the North line of said NE 1/4,  
were's lines were in the West line of said NE 1/4, were's lines to the place of  
beginning.

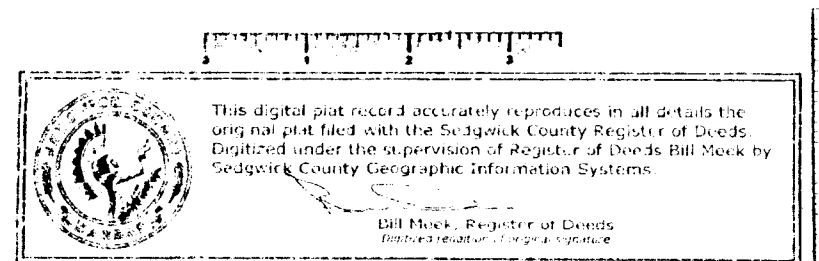
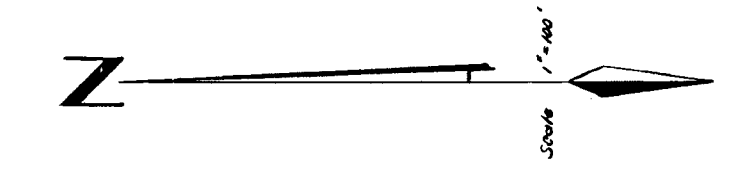
Know all men by these presents that we Thomas E. McEvoy and Helen E. McEvoy,  
his wife, have caused the land described in the foregoing certificate to be platted  
into lots, blocks, streets, and avenues in the town of "McEvoy Addition" Sedgewick County,  
Kansas. Easements are hereby granted as indicated on the plat for the construction  
and maintenance of all public utilities. Any such easements as indicated on the plat  
are also granted. The above and annexed are hereby dedicated to and for the use of the  
public.

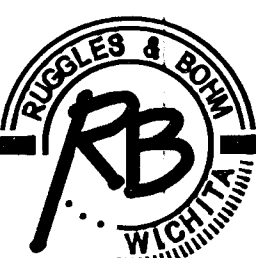
Thomas E. McEvoy  
Helen E. McEvoy

executed the foregoing instrument of writing and fully acknowledged the execution of same  
in my presence and I have received and my hand and official seal the day  
and year there written.  
My Commission expires July 1, 1932  
Approved by the county engineer Walter J. Schmitt, 1932  
Notary Public for Sedgewick County, Kansas  
Approved by the Board of County Commissioners Walter J. Schmitt, 1932  
County Clerk  
Walter J. Schmitt, County Clerk

Entered on former record on 11/28/05 at 11:52 AM, 1932  
Walter J. Schmitt, County Clerk

State of Kansas }  
County of Sedgewick } ss  
This is to certify that the instrument was filed by record in the Register of  
Deeds office on the 11th day of October, 1932, at 11:52 AM and is  
duly recorded.  
Walter J. Schmitt, Register of Deeds  
Deputy



<b>McEvoy Plat</b> WICHITA, KANSAS		DESIGN PDC	SHEET 17 OF 17
 <b>Ruggles &amp; Bohm, P.A.</b> Engineering, Surveying, Land Planning 924 North Main Wichita, Kansas 67203 www.rbkansas.com (316) 264-8008 (316) 264-4821 fax E-mail: info@rbkansas.com		DRAWN PDC	
		REVIEW PDC	
DRAWING FILE McEvoy Plat	PROJECT NUMBER 468-84026	DATE 11/28/05	