

FINAL PLAT

HAWTHORNE THIRD ADDITION

AN ADDITION TO WICHITA, SEDGWICK COUNTY, KANSAS

BENCH MARKS

BM #31 "T" post 41" x 4" SE of SE Cor. Williamsgate and Bottom end lying 27' 4" / S. of the North line of Lot 22, Blk. 1.
Elev. = 1844.24 (NGVD)
17634 City datum

BM #36 "T" post 5 1/2" x N. & 5 1/2" x W. of NW. Cor. Rosemont and Camden Chase - in Ret. "C".
Elev. = 1846.63 (NGVD)
18123 City datum

NE. Cor., SW 1/4, Sec. 2,
12725, R2E, 6th P.M.
Find 3/8" Rebar w/ T.I.S.
Bench Id. cap in Contc.

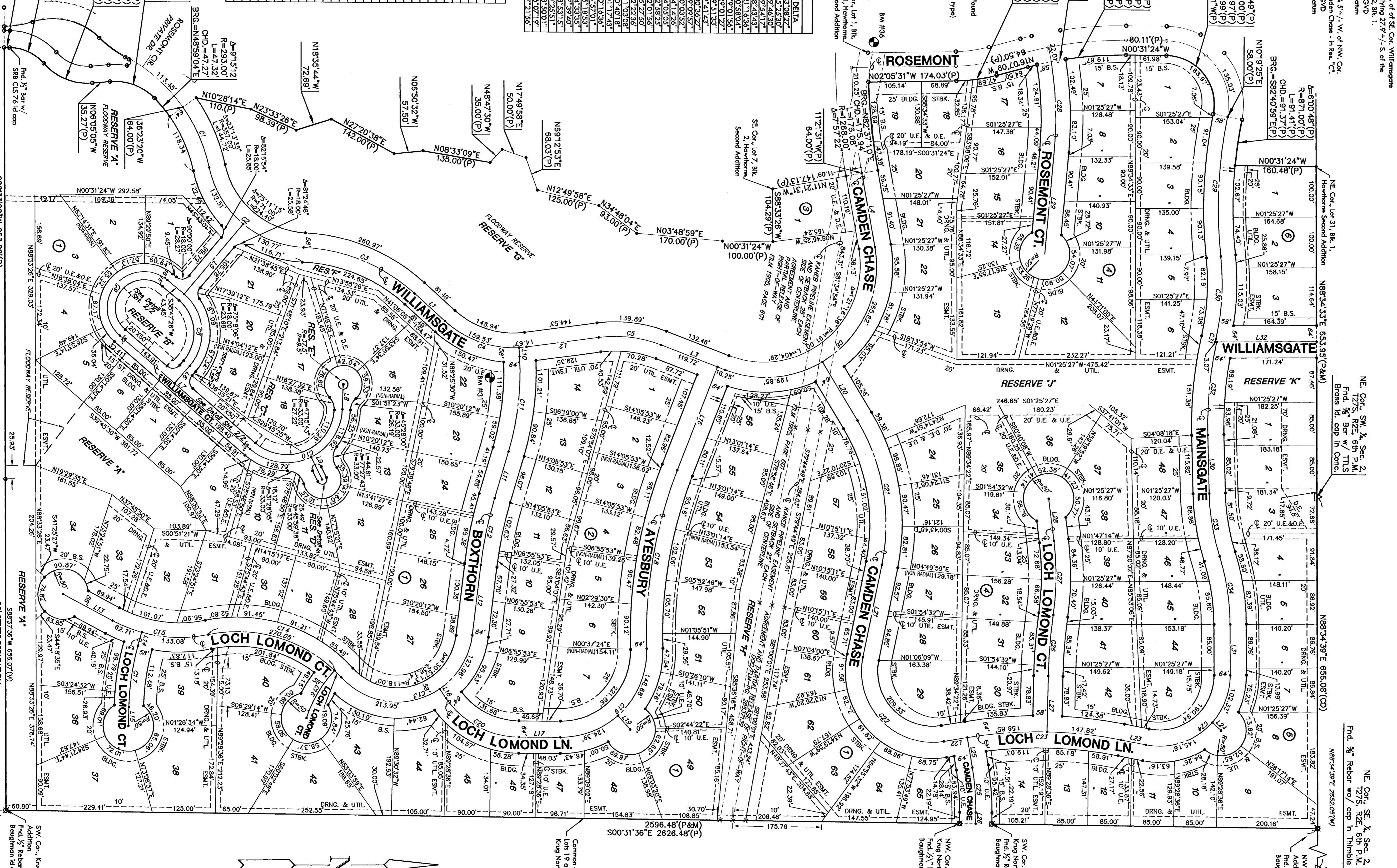
NE. Cor., SE 1/4, Sec. 2,
12725, R2E, 6th P.M.
Find 3/8" Rebar w/ cap in Thimble
18874.19' E 2852.05' W

- #### LEGEND
- △ Section Corner Monument Found
 - ⊠ Found Survey Monument (see omitted caption for type)
 - Found 5/8" Rebar w/ MKCC CLS 39 Id. Cap
 - Set 5/8" Rebar w/ MKCC CLS 39 Id. Cap
 - X = Middle
 - U.E. = Utility Easement
 - (D) = Deeded
 - (P) = Partial
 - (H) = Homestead
 - (M) = Measured

CURVE	LENGTH	RADIUS	DELTA
C1	31.26	325.00	23.0822
C2	268.29	200.00	252.9300
C3	242.97	350.00	97.4630
C4	174.20	200.00	49.5417
C5	128.35	250.00	78.4426
C6	158.27	100.00	91.5800
C7	324.30	72.42	179.0156
C8	242.71	110.00	190.4127
C9	190.64	550.00	97.5138
C10	333.39	800.00	97.5138
C11	388.12	300.00	80.8627
C12	192.79	250.00	40.0352
C13	110.00	500.00	24.1426
C14	122.91	200.00	4.0303
C15	304.87	170.00	22.5825
C16	72.00	170.00	9.0156
C17	295.84	400.00	42.2926
C18	271.35	140.00	111.0008
C19	300.67	850.00	20.4018
C20	247.51	140.00	101.1743
C21	97.88	100.00	101.638
C22	121.01	100.00	67.9101
C23	172.88	700.00	14.3935
C24	277.42	900.00	17.9740
C25	164.82	500.00	18.5318
C26	5.80	771.00	0.2451
C27	182.42	768.00	13.5001
C28	188.60	450.00	19.0719
C29	188.60	450.00	19.0719
C30	188.60	450.00	19.0719
C31	188.60	450.00	19.0719
C32	188.60	450.00	19.0719
C33	188.60	450.00	19.0719
C34	188.60	450.00	19.0719
C35	188.60	450.00	19.0719
C36	188.60	450.00	19.0719
C37	188.60	450.00	19.0719
C38	188.60	450.00	19.0719
C39	188.60	450.00	19.0719
C40	188.60	450.00	19.0719
C41	188.60	450.00	19.0719
C42	188.60	450.00	19.0719
C43	188.60	450.00	19.0719
C44	188.60	450.00	19.0719
C45	188.60	450.00	19.0719
C46	188.60	450.00	19.0719
C47	188.60	450.00	19.0719
C48	188.60	450.00	19.0719
C49	188.60	450.00	19.0719
C50	188.60	450.00	19.0719
C51	188.60	450.00	19.0719
C52	188.60	450.00	19.0719
C53	188.60	450.00	19.0719
C54	188.60	450.00	19.0719
C55	188.60	450.00	19.0719
C56	188.60	450.00	19.0719
C57	188.60	450.00	19.0719
C58	188.60	450.00	19.0719
C59	188.60	450.00	19.0719
C60	188.60	450.00	19.0719
C61	188.60	450.00	19.0719
C62	188.60	450.00	19.0719
C63	188.60	450.00	19.0719
C64	188.60	450.00	19.0719
C65	188.60	450.00	19.0719
C66	188.60	450.00	19.0719
C67	188.60	450.00	19.0719
C68	188.60	450.00	19.0719
C69	188.60	450.00	19.0719
C70	188.60	450.00	19.0719
C71	188.60	450.00	19.0719
C72	188.60	450.00	19.0719
C73	188.60	450.00	19.0719
C74	188.60	450.00	19.0719
C75	188.60	450.00	19.0719
C76	188.60	450.00	19.0719
C77	188.60	450.00	19.0719
C78	188.60	450.00	19.0719
C79	188.60	450.00	19.0719
C80	188.60	450.00	19.0719
C81	188.60	450.00	19.0719
C82	188.60	450.00	19.0719
C83	188.60	450.00	19.0719
C84	188.60	450.00	19.0719
C85	188.60	450.00	19.0719
C86	188.60	450.00	19.0719
C87	188.60	450.00	19.0719
C88	188.60	450.00	19.0719
C89	188.60	450.00	19.0719
C90	188.60	450.00	19.0719
C91	188.60	450.00	19.0719
C92	188.60	450.00	19.0719
C93	188.60	450.00	19.0719
C94	188.60	450.00	19.0719
C95	188.60	450.00	19.0719
C96	188.60	450.00	19.0719
C97	188.60	450.00	19.0719
C98	188.60	450.00	19.0719
C99	188.60	450.00	19.0719
C100	188.60	450.00	19.0719

LINE	LENGTH	BEARING
L1	81.49	S41°00'00"W
L2	144.53	S09°48'11"W
L3	35.97	S19°55'31"W
L4	148.14	N78°38'53"W
L5	81.53	S51°17'24"W
L6	45.56	S50°47'36"W
L7	49.32	S89°13'57"W
L8	49.32	S82°40'38"W
L9	17.60	N83°23'00"E
L10	96.07	S27°44'29"E
L11	140.00	S84°26'10"E
L12	27.44	S75°42'41"E
L13	37.61	N89°50'47"W
L14	27.44	S75°42'41"E
L15	219.41	N87°04'59"W
L16	32.38	N01°00'58"W
L17	82.38	N54°20'53"E
L18	22.37	N54°20'53"E
L19	16.54	S79°44'46"W
L20	182.42	S79°44'46"W
L21	182.42	S79°44'46"W
L22	46.78	S10°47'57"E
L23	46.78	S10°47'57"E
L24	33.36	S40°59'10"W
L25	60.14	S97°10'10"W
L26	110.33	S89°54'32"W
L27	83.91	S89°54'32"W
L28	204.62	S83°57'03"E
L29	115.82	N88°34'20"E
L30	100.25	N88°34'20"E
L31	200.41	N01°23'38"W

A=50°26'34"(P)	R=96.00(P)
L=110.50(P)	CHD=81.37(P)
L=97.28(P)	CHD=94.17(P)
L=190.81(P)	CHD=103.32(P)
L=534.39(P)	CHD=103.32(P)
L=140.50(P)	CHD=103.32(P)
L=107.27(P)	CHD=103.32(P)
L=574.39(P)	CHD=103.32(P)
L=81.50(P)	CHD=103.32(P)
L=76.84(P)	CHD=103.32(P)
L=74.60(P)	CHD=103.32(P)
L=103.32(P)	CHD=103.32(P)



MKEC
ENGINEERING
CONSULTANTS
1775 S. R2E, 6th P.M.
WICHITA, KS 67202
316-684-9900

