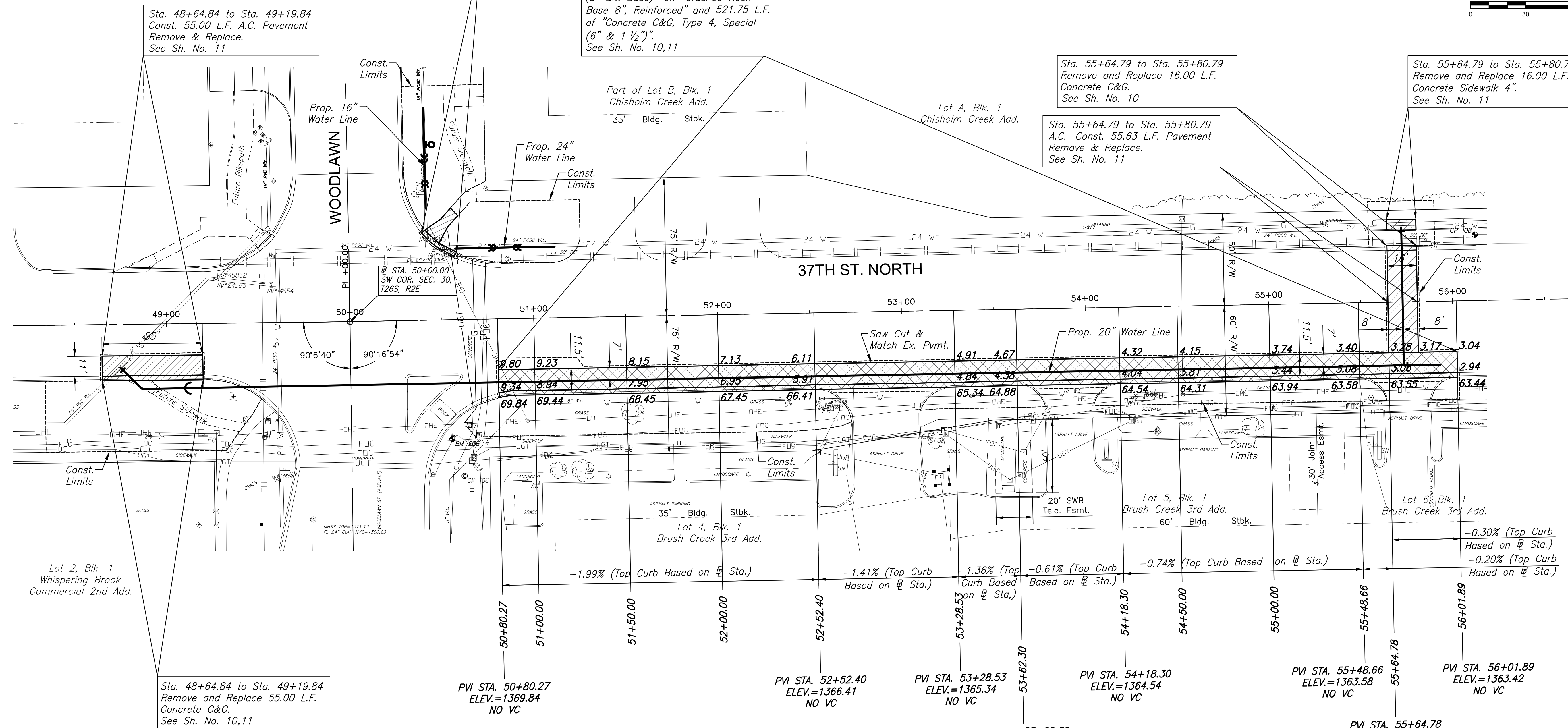
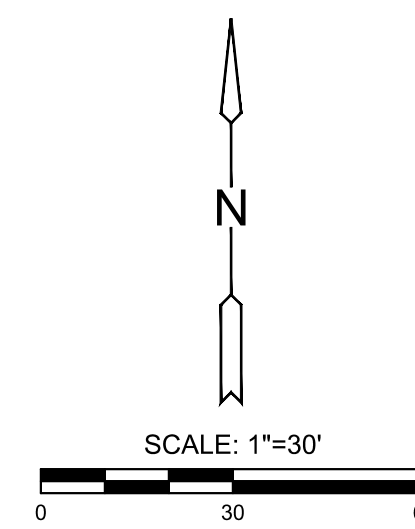


PLOTTED: Thursday, December 23, 2021 @ 12:58PM

POT STA. 48+00.00 37th St.
1. Not Set
2. N=1710184.106, E=1670130.659

PI STA. 50+00.00 37th St.
No Curve $\Delta=0^{\circ}23'34''$ Lt.
1. Found $\frac{3}{4}$ " pipe in thimble
2. "X" cut in top of curb, 24" east of handicap ramp
3. Center of traffic signal manhole
4. "X" cut in top of curb, 0.8' east of handicap ramp
5. N=1710186.490, E=1670330.645

POT STA. 56+50.00 37th St.
1. Not Set
2. N=1710198.695, E=1670980.530



Sta. 48+64.84 to Sta. 49+19.84
Const. 55.00 L.F. A.C. Pavement
Remove & Replace.
See Sh. No. 11

Sta. 50+39.76 to Sta. 50+58.61
Remove and Replace 21.31 L.F.
Concrete C&G. Remove and Replace
Wheelchair Ramp and 8.2 L.F. of
"Concrete Sidewalk 4"
See Sh. No. 10,11

Sta. 50+80.14 to Sta. 56+01.89
Const. 670.2 S.Y. "AC Pavement 7"
(5" Bit. Base) on "Crushed Rock
Base 8", Reinforced" and 521.75 L.F.
of "Concrete C&G, Type 4, Special
(6" & 1 1/2")".
See Sh. No. 10,11

Sta. 55+64.79 to Sta. 55+80.79
Remove and Replace 16.00 L.F.
Concrete C&G.
See Sh. No. 10

Sta. 55+64.79 to Sta. 55+80.79
Remove and Replace 16.00 L.F.
Concrete Sidewalk 4".
See Sh. No. 11

Lot 2, Blk. 1
Whispering Brook
Commercial 2nd Add.

Sta. 48+64.84 to Sta. 49+19.84
Remove and Replace 55.00 L.F.
Concrete C&G.
See Sh. No. 10,11

PVI STA. 50+80.27
ELEV.=1369.84
NO VC

PVI STA. 52+52.40
ELEV.=1366.41
NO VC

PVI STA. 53+28.53
ELEV.=1365.34
NO VC

PVI STA. 54+18.30
ELEV.=1364.54
NO VC

PVI STA. 55+48.66
ELEV.=1363.58
NO VC

PVI STA. 56+01.89
ELEV.=1363.42
NO VC

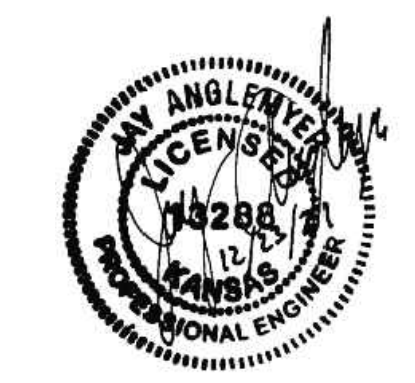
- SW Corner Sec. 30, T26S, R2E
Sta. 50+00.00, \square
1. Found $\frac{3}{4}$ " pipe in thimble
 2. "X" cut in top of curb, 24" E of handicap ramp
 3. Ctr. of traffic signal manhole
 4. "X" cut in top of curb, 0.8' E of handicap ramp
 5. N=1710186.490, E=1670330.645

BM#107 "+" Cut Ctr. S bound sidewalk @
E side Dillons entrance off 37th St.
Sta. 46+80.20, 64.47' Rt. Elev.=1380.50

CP#106 $\frac{5}{8}$ " Rebar w/2" MKEC cap on SE
corner of 37th St. & Woodlawn
Sta. 50+60.74, 85.09' Rt. Elev.=1371.73

BM#206 "□" cut on SW cor. of traffic signal MH @ SE
cor. of Woodlawn & 37th St.
Sta. 50+54.51, 64.87' Rt. Elev.=1370.82

BM#108 "□" cut NW cor. curb inlet, 129' W of W curb
Chisholm Creek Dr. & 35' N of \square 37th St.
Sta. 56+12.64, 35.78' Lt. Elev.=1363.32



LEGEND

	Pavement Removal
	Pavement/Curb/Sidewalk Removed and Replaced

PLANS FOR 37TH STREET WATER LINE WICHITA, KS

©2021
MKEC Engineering
All Rights Reserved
www.mkec.com
These drawings and their contents,
including, but not limited to, all concepts,
designs, & ideas are the exclusive
property of MKEC Engineering (MKEC),
and may not be used or reproduced in any
way without the express consent of MKEC.

PAVEMENT RESTORATION PLAN

PROJECT NO.	1901010483	
DATE	DEC. 2021	
SCALE	1"=30'	
DESIGNED	JRA	
DRAWN	WNJ	
CHECKED	JRA	
NO.	REVISION	DATE

SHEET NO.
9 OF 31