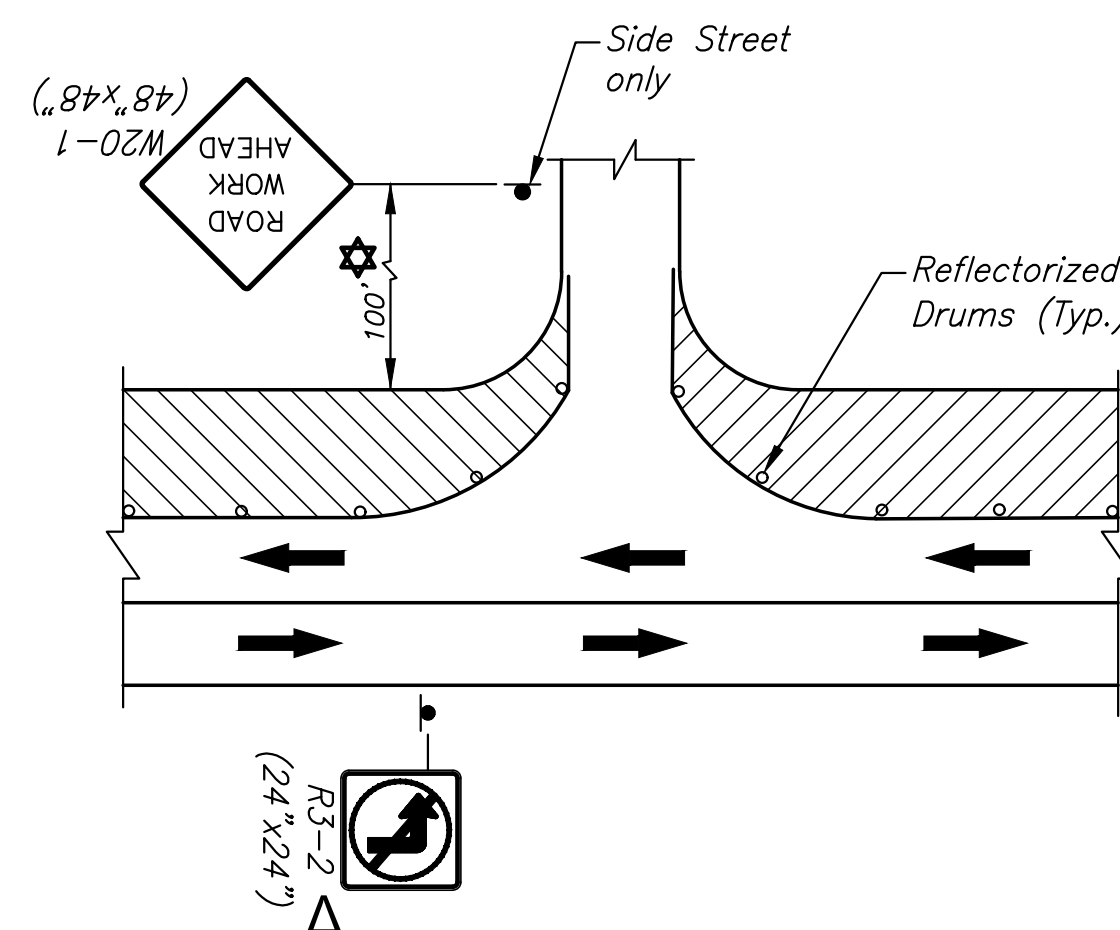
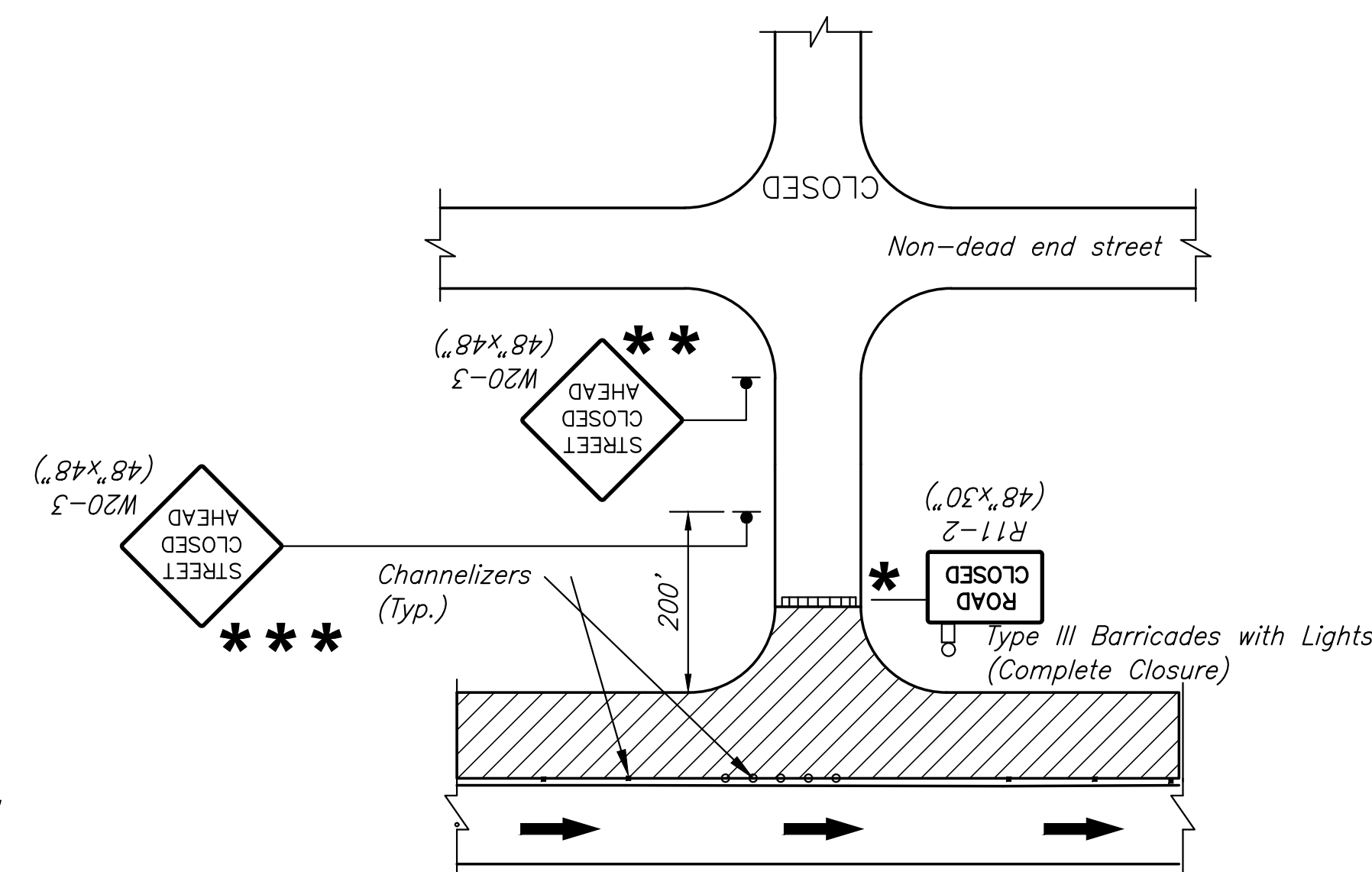


PLANS FOR
37TH STREET WATER LINE
WICHITA, KS



**TYPICAL ENTRANCE AND SIDE STREET
(ONE-WAY TRAFFIC ON WOODLAWN)**

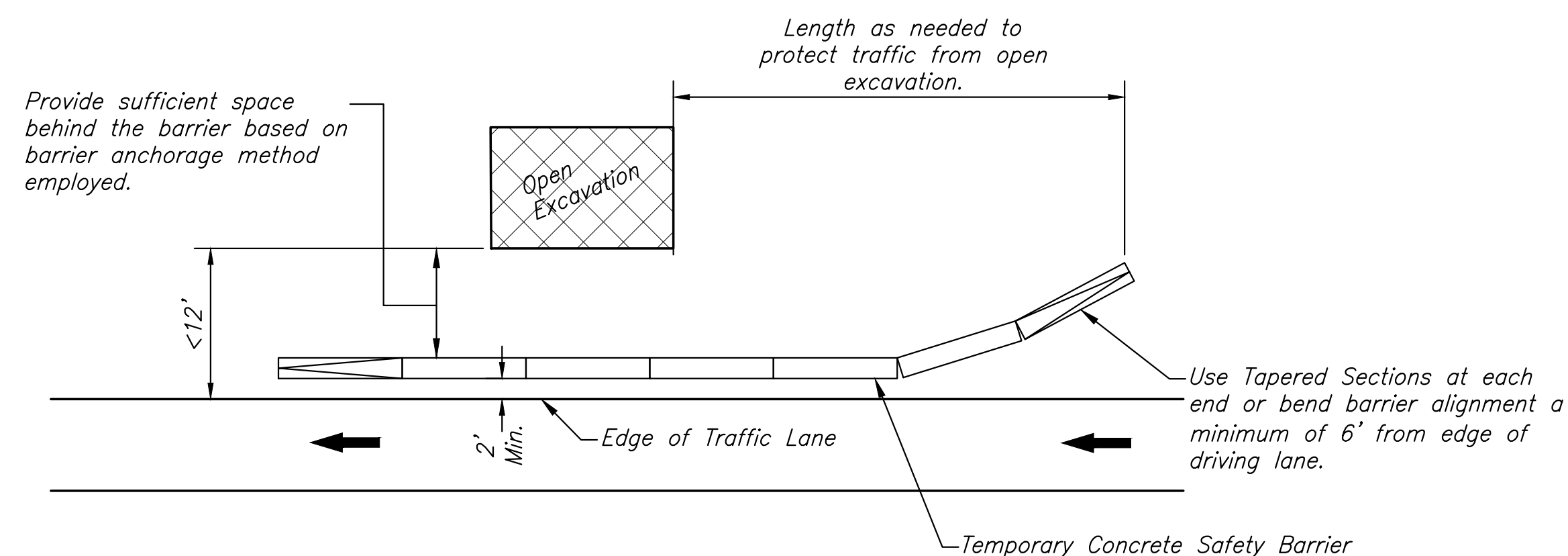
- △ Use only when directed by the engineer.
- ≠ Mount below stop sign when present.
- ⊛ Distance will vary depending on location. Entrances will not require Road Work Ahead sign.



TYPICAL CLOSED SIDE STREET/DRIVEWAY

Note:
One-way (R6-1) signs are only required when 37th St. is reduced to one-lane traffic.

- * Required on side streets and properties with alternate access.
- ** Required on side streets.
- *** Required on side streets when distance between first sign and 37th St. is greater than 500'.



TEMPORARY CONCRETE SAFETY BARRIER

CONSTRUCTION SEQUENCING AND TRAFFIC CONTROL NOTES

1. Open trenches remaining open during times of contractor inactivity shall be protected with appropriate temporary fencing.
2. Temporary concrete safety barrier adjacent to open excavations shall be utilized in accordance with these plans when the space between open excavations and the edge of traffic lanes is less than 12 feet. If 12 feet or more is provided, concrete safety barrier may be replaced with channelizers and temporary edge pavement markers in conformance with these plans and the MUTCD.

©2021
MKEC Engineering
All Rights Reserved
www.mkec.com
These drawings and their contents, including, but not limited to, all concepts, designs, & ideas are the exclusive property of MKEC Engineering (MKEC), and may not be used or reproduced in any way without the express consent of MKEC.

TRAFFIC CONTROL DETAILS

| | | |
|-------------|------------|---------|
| PROJECT NO. | 1901010483 | |
| DATE | DEC. 2021 | |
| SCALE | NTS | |
| DESIGNED | DRAWN | CHECKED |
| JRA | WNJ | JRA |

| | | |
|-----|----------|------|
| NO. | REVISION | DATE |
| | | |
| | | |

SHEET NO.

