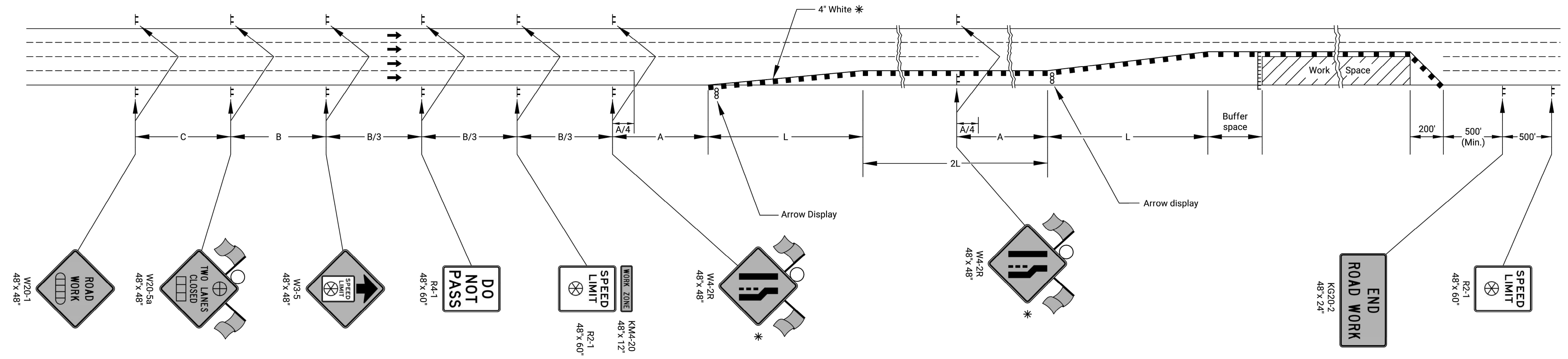


STATE	PROJECT NO.	YEAR	SHEET NO.	TOTAL SHEETS
KANSAS	1901010483	2022	27	31



- ⏏ Type 3 Barricades
- X Length to the Nearest Whole Mile
- Channelizing Device
- ⏏ Ahead, 1500 ft, or 1 mile
- ⏏ Ahead, 1000 ft, 1500 ft, or 1/2 mile
- ⊕ Right or Left
- ⊗ Speed to be Determined by the Engineer
- Type "A" Low Intensity Warning Light

\* For left lane closures use W4-2L and yellow edge line along channelizing devices.

One flagger should be stationed within each multi-lane roadway activity area where work is in a closed lane adjacent to traffic and not separated by a concrete safety barrier system.



3					
2					
1					
NO.	DATE	REVISIONS	BY	APP'D	

**KANSAS DEPARTMENT OF TRANSPORTATION**

**TRAFFIC CONTROL  
TWO LANES CLOSED**

TE746

DESIGNED	B.A.H.	DATE	06/01/15	APP'D	Kristina Erickson
DESIGN CK.		DETAIL CK.		QUAN. CK.	

J:\PROJECTS\2019\1901010483\_COW\_37TH STREET WATERLINE\_190483 CAD\SHOTS\05 CIVIL\TRAFFIC CONTROL\190483-05-5766.DWG  
 PLOTTED: Thursday, December 23, 2021 @ 01:35PM