

Note to Designer: For use on Haunched slab bridges, the Road Designer shall coordinate with the Bridge Designer for "corridor in the reinforcing steel layout to accommodate barrier anchoring". Road Designer shall coordinate barrier layout with Bridge Designer to accommodate for expansion during construction.

Plotted by: Amy Rockers@ks.gov 12-JUL-2021 20:25 File: rfd622b.dgn

RDOTED: Thursday, December 23, 2021 @ 01:14PM

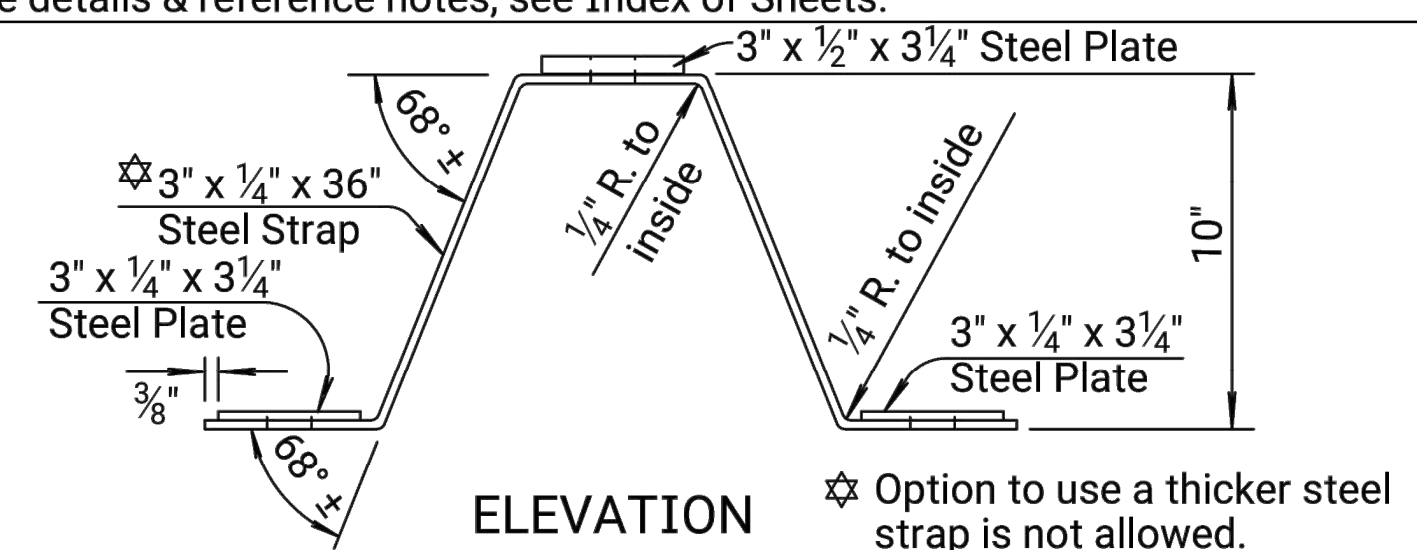
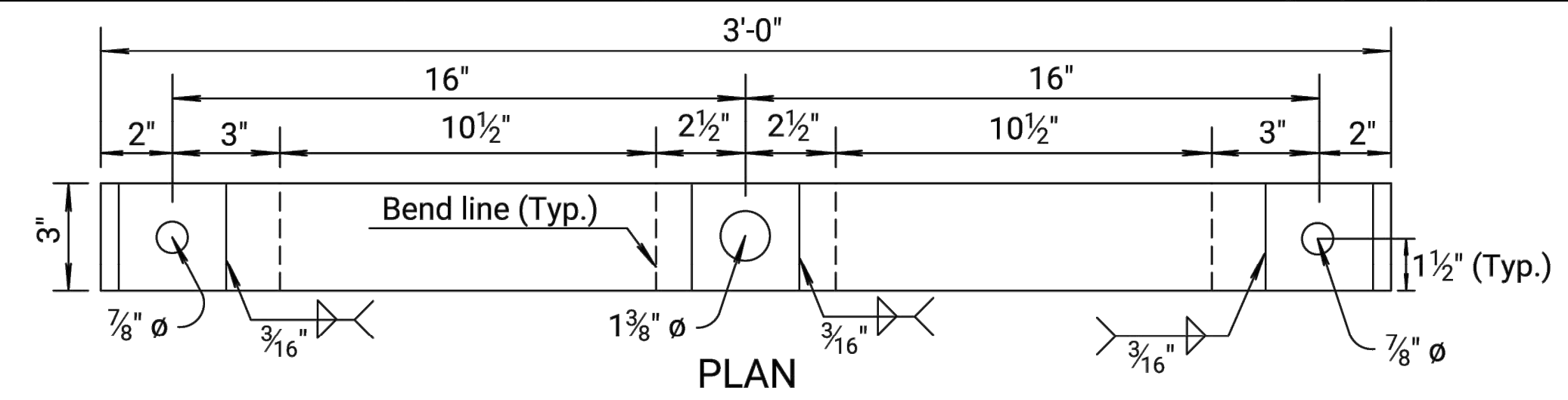
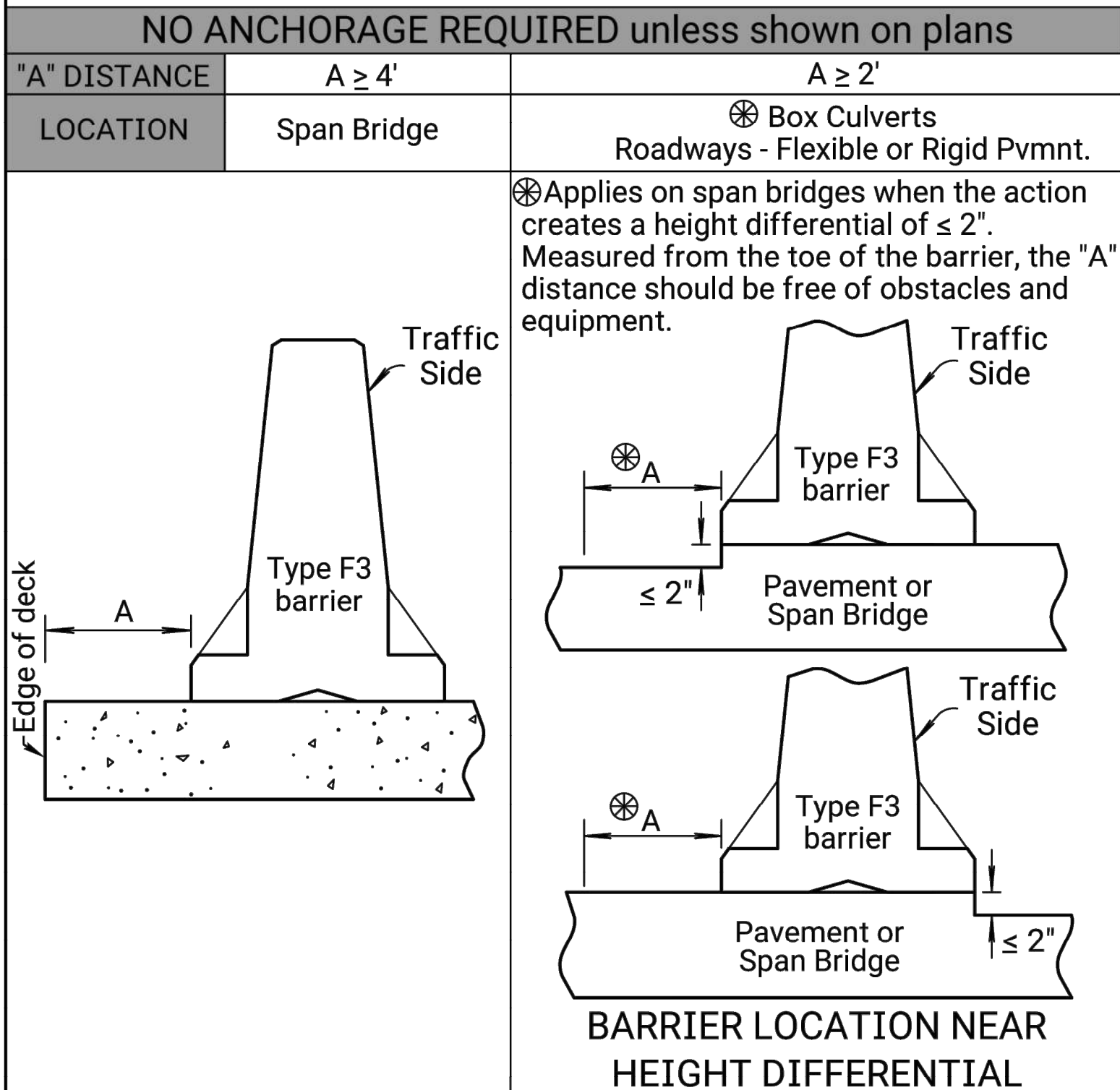
GENERAL NOTES:

INSTALLATION: Holes into the pavement to anchor the concrete safety barrier may be drilled after positioning barrier. When anchoring with 3 bolts on traffic side, install barrier with through anchor bolt where possible, use grouted anchor bolts where through bolt can't be used. Do not drill into or otherwise damage support beams, girders, or expansion joints. All work & materials required for the installation of the anchors are subsidiary to the bid item "Concrete Safety Barrier".
UTILITIES & STRUCTURES (Stakes): Verify buried utilities & structures within stake depth. If conflicts between stake & buried elements exist, up to 2 stakes maximum in a single barrier may be omitted if adjacent barriers have 3 stakes each.

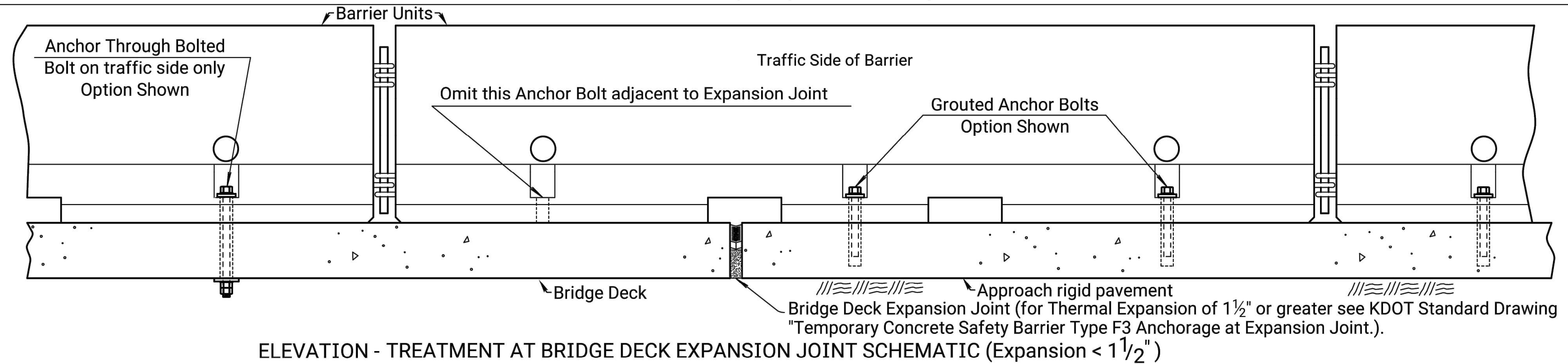
ANCHORAGE: Use galvanized grouted anchor bolts, through anchor bolts, nuts & washers that meet standard specifications. Install 3 anchor bolts or asphalt pins per barrier on the traffic side except on transition barrier as shown.
BARRIER REMOVAL: Completely remove all anchor systems. Remove grouted or drop-in anchor system by drilling the anchor with a core barrel 2x the diameter of the insert. Core to a depth equal to the installed depth & remove the core, prepare the hole by removing dust & debris. Fill hole with material that meets KDOT Pre-qualified "Non-shrink grouts for grouting anchor bolts & reinforcing into previously poured concrete". Follow the manufacturer's procedures for mixing, hole preparation & curing. To fill through bolt anchor or screw-in anchor system, remove & completely fill the hole using instructions for drop-in

anchors except no coring is required.
 For removed or relocated barrier on flexible pavement, fill stake holes completely with hot or cold asphalt patch material. Work & materials required to remove & patch anchor holes are subsidiary to the bid item "Concrete Safety Barrier".
TEMPORARY BARRIERS: Temporary Barriers shown in the details of this drawing are not allowed for permanent installations.
 See KDOT Standard Drawing "Temporary Concrete Safety Barrier Type F3 Transition Layouts" for transition details between anchored & free-standing barriers. See KDOT Standard Drawing "Temporary Concrete Safety Barrier Type F3" for details & quantities not shown on this sheet.
SIGNING: For sign spacing, traffic control device details & reference notes, see Index of Sheets.

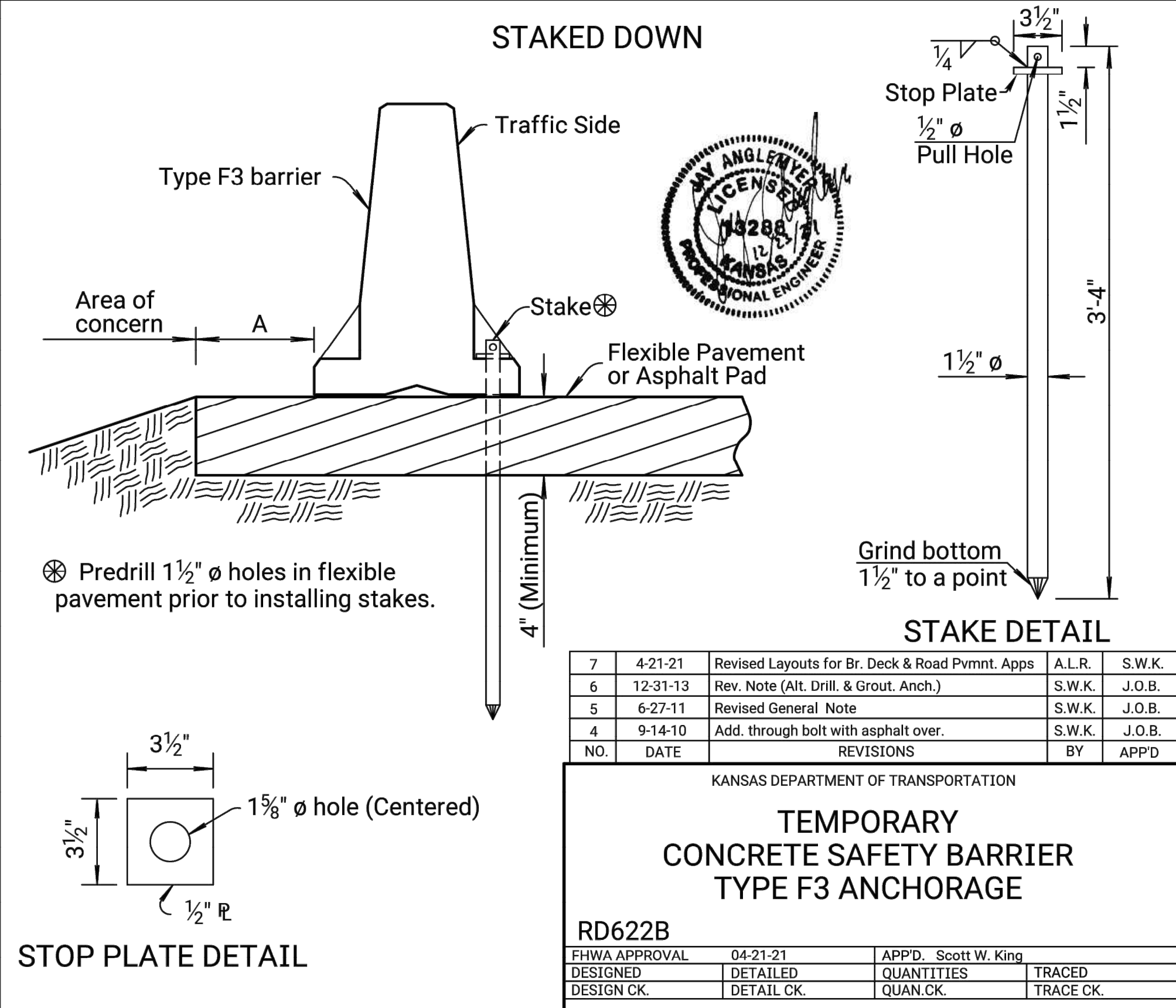
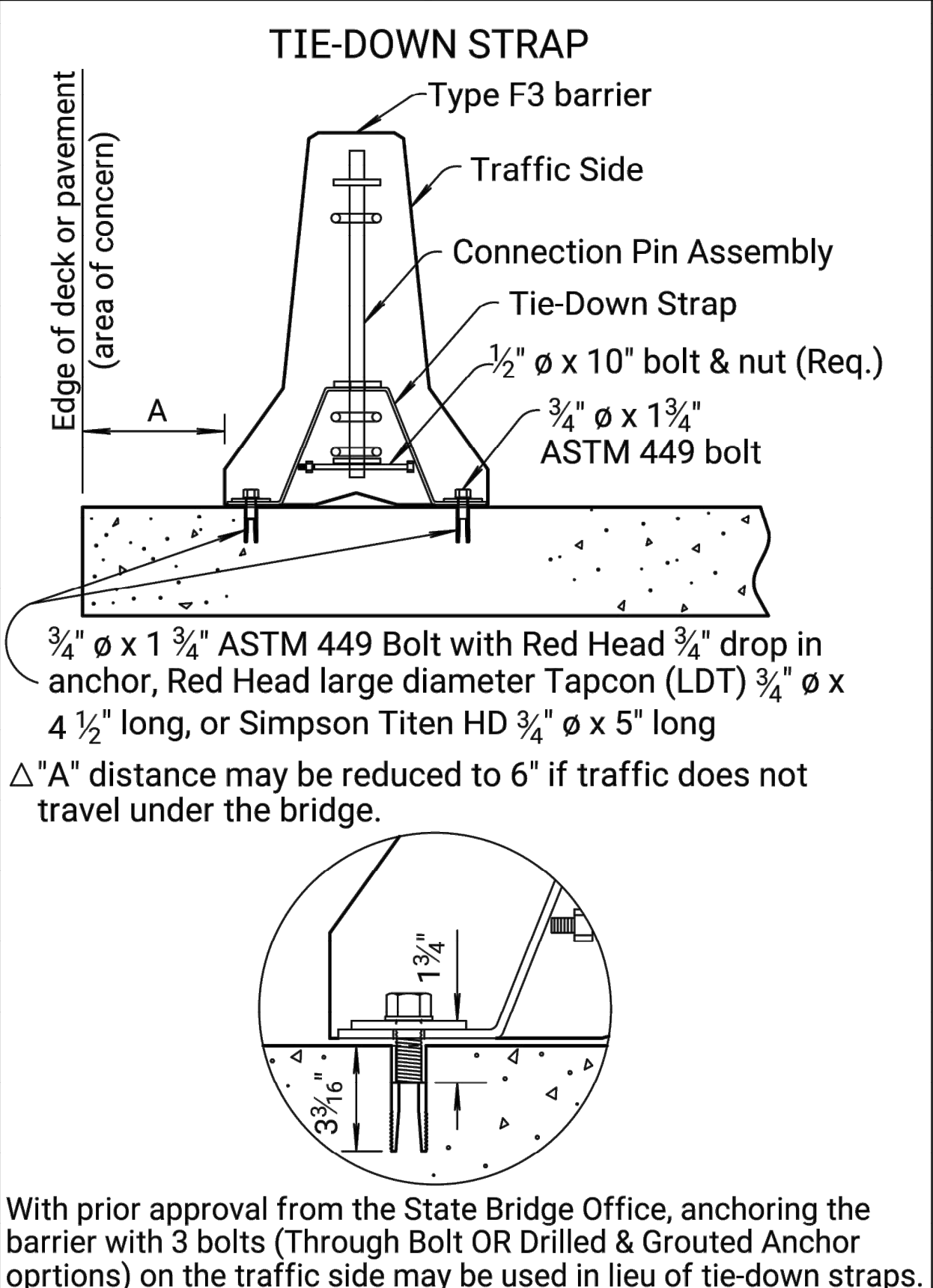
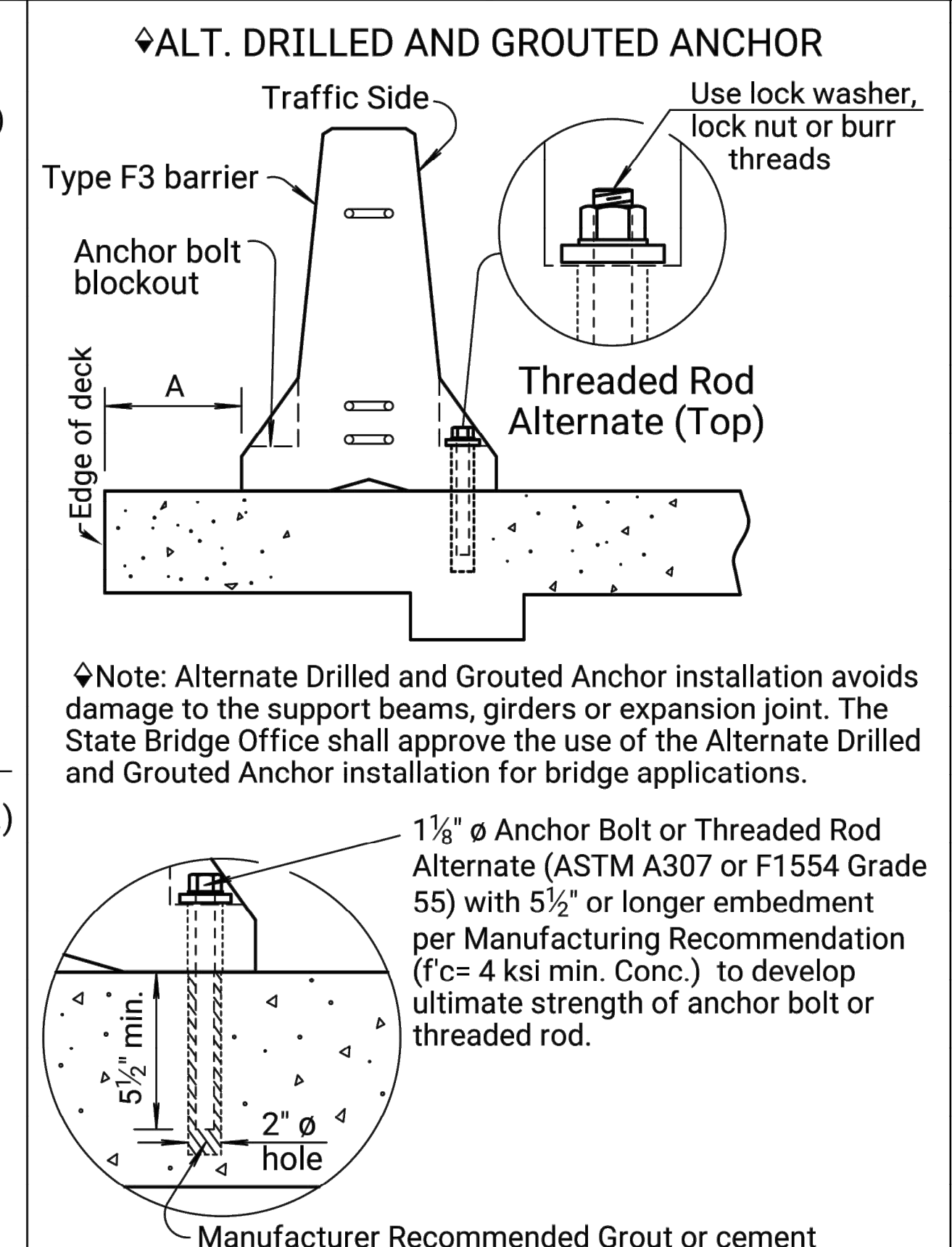
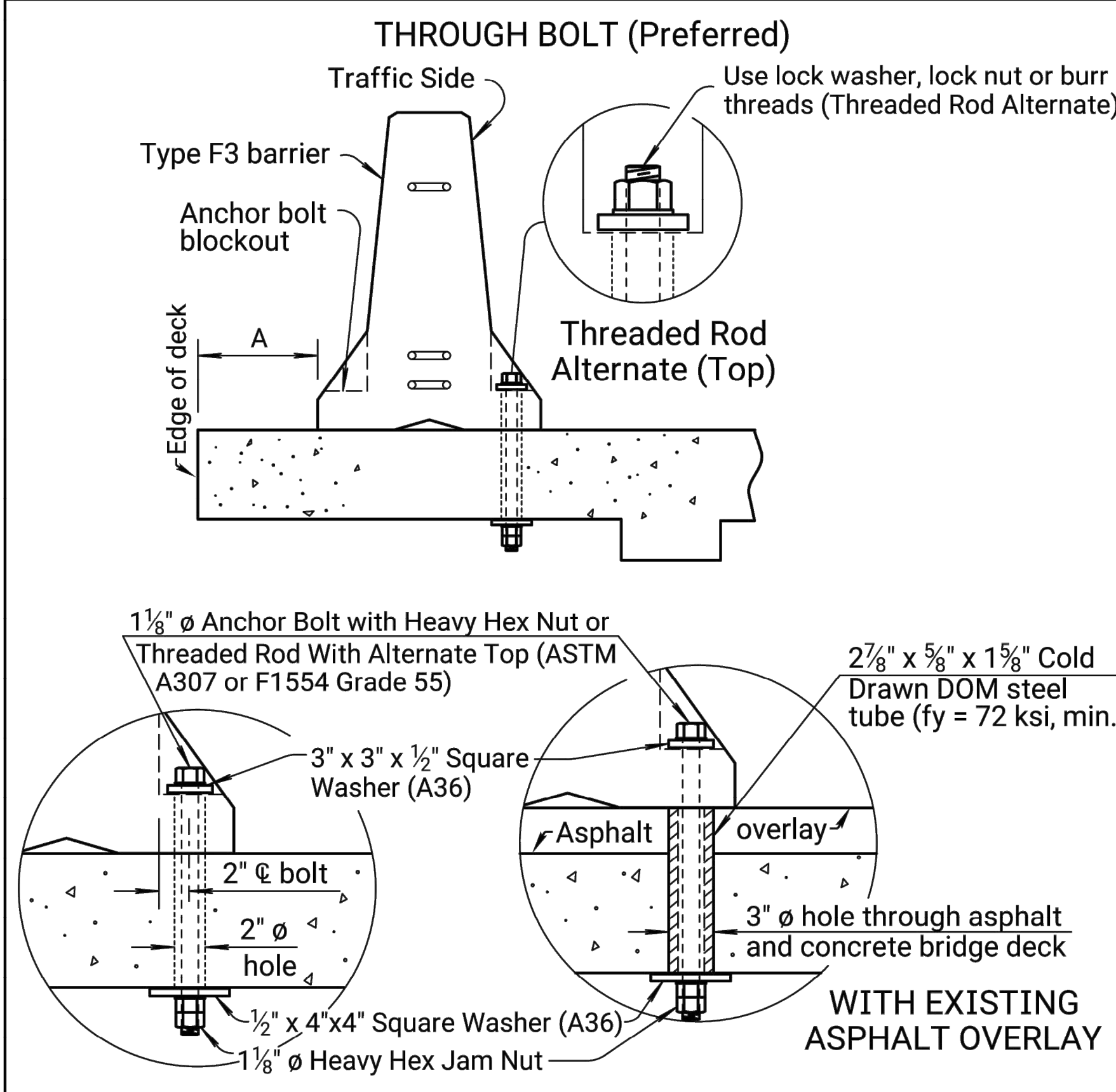
| | | | | |
|--------|-------------|------|-----------|--------------|
| STATE | PROJECT NO. | YEAR | SHEET NO. | TOTAL SHEETS |
| KANSAS | 1901010483 | 2022 | 30 | 31 |



TIE-DOWN STRAP DETAILS



| ANCHORAGE | ANCHOR BARRIER with 3 BOLTS ON TRAFFIC SIDE | ANCHOR BARRIER with 3 BOLTS ON TRAFFIC SIDE | ANCHOR BARRIER with TIE-DOWN STRAP | ANCHOR BARRIER with STAKES |
|--------------|---|--|--|--|
| "A" DISTANCE | 0' ≤ A < 2' | 0' ≤ A < 2' | Δ 2' ≤ A < 4' | 6" ≤ A < 2' |
| LOCATION | Span Bridge | Span Bridge Box Culverts Roadways - RIGID Pavement | Span Bridge Box Culverts Roadways - RIGID Pavement | Box Culverts (ceiling below stake depth) Roadways - FLEXIBLE Pavement |



| | | | | |
|-----|----------|---|--------|--------|
| 7 | 4-21-21 | Revised Layouts for Br. Deck & Road Pvmnt. Apps | A.L.R. | S.W.K. |
| 6 | 12-31-13 | Rev. Note (Alt. Drill. & Grout. Anch.) | S.W.K. | J.O.B. |
| 5 | 6-27-11 | Revised General Note | S.W.K. | J.O.B. |
| 4 | 9-14-10 | Add. through bolt with asphalt over. | S.W.K. | J.O.B. |
| NO. | DATE | REVISIONS | BY | APPD |

KANSAS DEPARTMENT OF TRANSPORTATION

TEMPORARY CONCRETE SAFETY BARRIER TYPE F3 ANCHORAGE

RD622B

| | | | |
|------------|------------|-----------|---------------|
| DESIGNED | 04-21-21 | APPD. | Scott W. King |
| DESIGN CK. | QUANTITIES | TRACED | |
| | DETAIL CK. | TRACE CK. | |

KDOT Graphics Certified 07-09-2021 Sh. No. 30