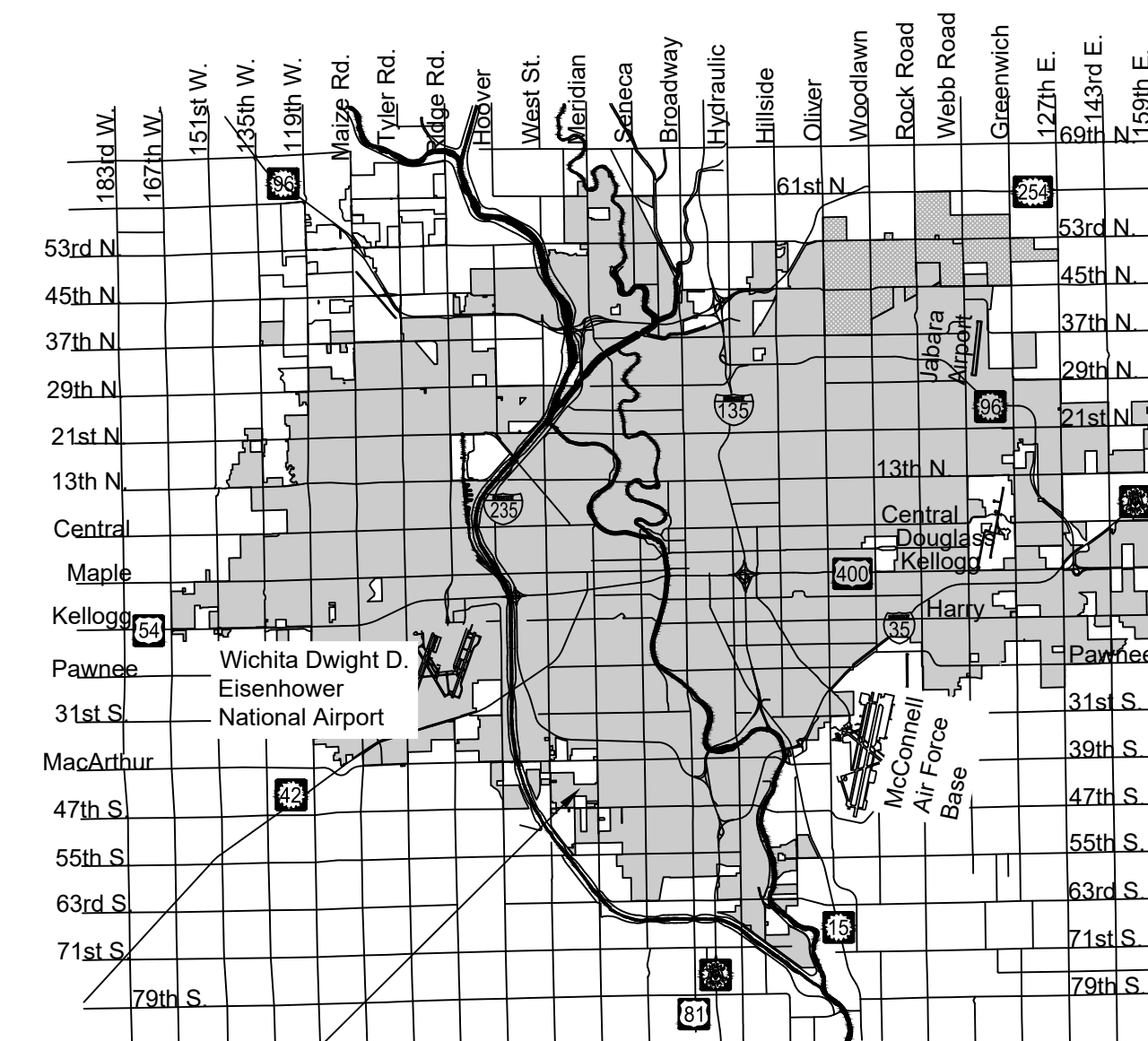


# SANITARY SEWER EXTENSION to serve LEGACY 3RD ADDITION PHASE 4 CITY OF WICHITA, KANSAS

Gary Janzen, P.E. City Engineer  
Project Number 468-2020-024507  
O.C.A. NO. 810124

McCullough - Contractor  
K. Kerns - City of Wichita, Field Project Engineer  
S. Strippling - City of Wichita, Inspector  
As-built  
Release Date: n/a  
Completion Date:  
pdf: apr 2/11/2022

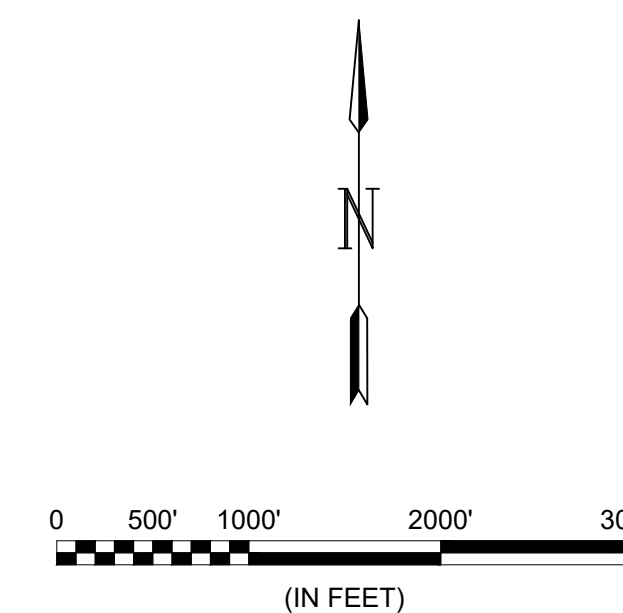


PROJECT  
LOCATION

Vicinity Map

## SHEET INDEX

SHEET	TITLE
1	TITLESHEET
2	PRE-CAST SS MH
3	MH FRAME & COVER
4	SS 1
5	SS 2
6	SS 3
7	SS 4
8	BUBBLE MAP (SS)
9	SUBDIVISION BUBBLE MAP
10	EROSION CONTROL SS
11	BACK OF CURB PROTECTION DETAILS
12	SILT FENCE DETAILS
13	STRAW BALE DETAILS
14	STREET IMPROVEMENT PROJECTS
15	SUBDIVISION DEVELOPMENT PROCESS
16	PLAT



Dec 2020

PLANS PREPARED BY



GARVER  
8535 E. 21st Street N.  
Suite 130  
Wichita, KS 67206  
(316) 264-8008  
www.GarverUSA.com  
Project No. ####

## GENERAL NOTES:

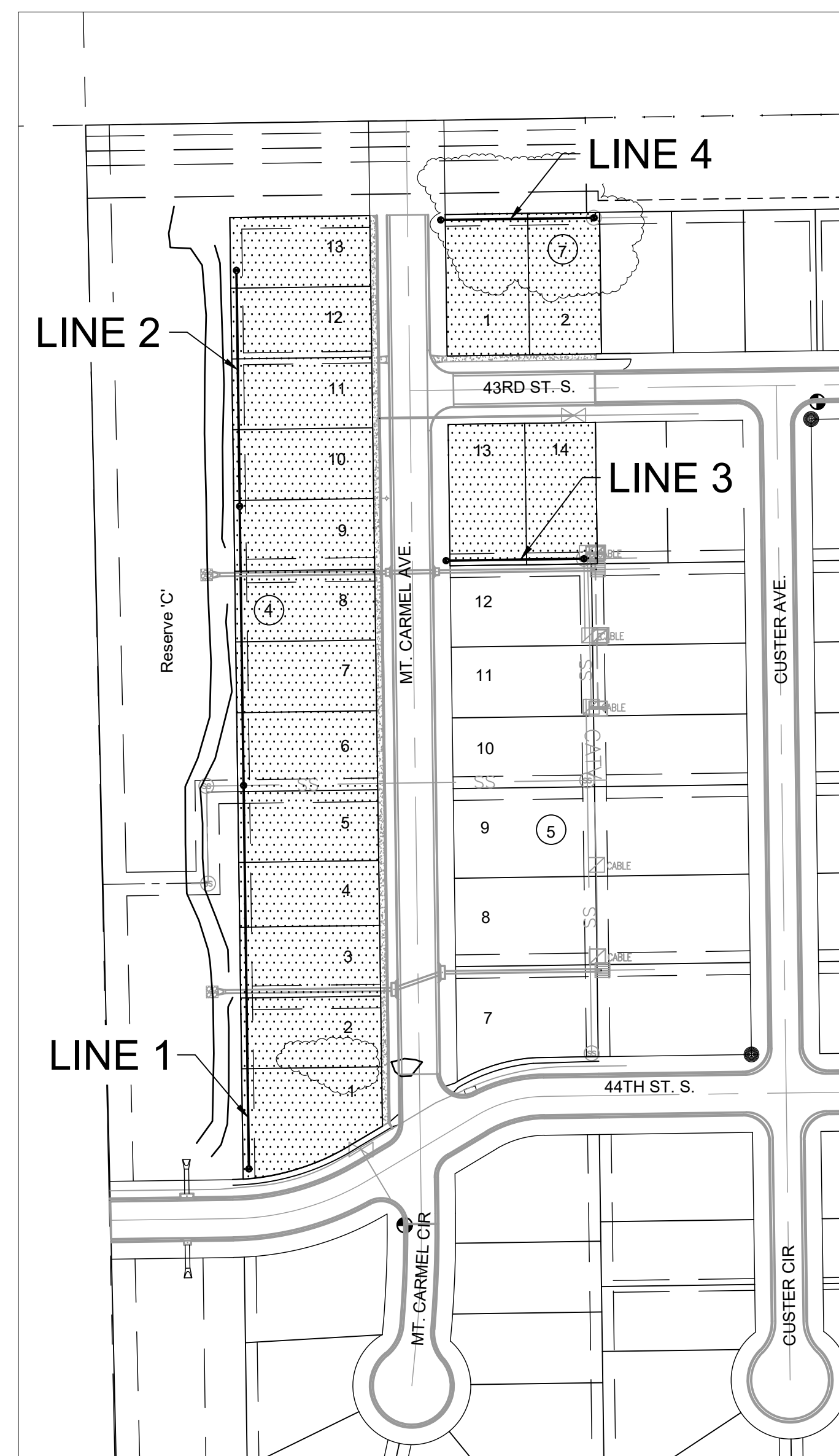
- The Contractor shall comply with all applicable safety regulations. All construction shall be completed following current City Standard Specifications and Special Provisions.
- Contractor will be required to provide notice to utility companies a minimum of seventy-two (72) hours prior to any excavation, as follows:  
  
Kansas One-Call 687-2470  
  
The Contractor must notify the following in case of an emergency:  
  
AT&T 1-800-246-8464  
Black Hills Energy 1-800-694-8989  
City of Wichita Water & Sewer Dept. 1-316-219-8921  
City of Wichita Stormwater 1-316-268-4090  
City of Wichita Traffic 1-316-268-4034  
Cox Communications 1-888-249-3530  
Evergy 1-800-544-4857  
Kansas Gas Service 1-888-482-4950
- Utility service lines, poles, etc. are to be adjusted as necessary by others prior to construction unless the plans specifically call for their adjustment by the Contractor or unless the plans specifically identify a utility to be adjusted by its owner during construction. Existing utilities and their location, as shown on the plans, represent the best information obtainable for design. The Contractor will be required to work around existing utilities within the right-of-way which do not conflict with proposed construction.
- Rubble from the removal of miscellaneous structures and excess excavation which is to be wasted shall be disposed of on sites to be provided by the Contractor. These sites shall be approved by the Engineer as to suitability, appearance and site location. Locations, in the opinion of the Engineer, that will leave an unsightly appearance will not be approved. All disposal sites must be approved by the Kansas Department of Health and Environment. Material either stockpiled or disposed of in a flood plain will require a Kansas State Board of Agriculture permit. Any material dumped in waters of the United States or wetlands is subject to U.S. Corps. of Engineers permitting regulations. Any material buried or stockpiled beyond approved construction limits will require additional archaeological investigations unless buried in a previously approved borrow location.
- Trees and shrubs in public right-of-way which are in direct conflict with proposed new construction shall be removed by the Contractor with the Engineer's approval. Trees and shrubs which are not in direct conflict with proposed new construction shall be saved and protected from damage.
- The Contractor shall give all property owners and/or tenants of developed property abutting the construction of this project a minimum of ten (10) days notice prior to start of construction.
- The Contractor shall be responsible for preserving property irons. The Contractor will be required to re-establish any property irons which are damaged or destroyed by his construction operations. Such irons shall be re-established by a licensed land surveyor in accordance with state laws.
- If traffic will be impacted by construction, a traffic control plan must be submitted and approved by the City Traffic Engineer, at [traffic@wichita.gov](mailto:traffic@wichita.gov) before construction can begin. The Contractor shall be responsible for all traffic control measures to facilitate construction. All construction zone markings and signage shall conform to the latest version of the Manual on Uniform Traffic Control Devices (MUTCD) as published by the US Dept. of Transportation, Federal Highway Administration. All costs associated with construction markings and signage shall be the Contractors responsibly.
- All elevations shown are NAVD 88.
- All areas disturbed during construction that will not be under proposed pavement shall be restored to match existing conditions.
- The Contractor shall protect from damage and support existing utilities through constructions as approved by the utility owner and the Engineer at the contractors expense.

- Contractor shall limit the extent of trench openings overnight and weekends to less than 50 feet.
- All stubs and plugged pipes shall be located with green plastic tape in the same manner as risers.
- Connecting to Existing Manholes:  
  
Prior to laying sewer lines using existing stubs in existing manholes, the Contractor shall expose and verify the elevation, grade and alignment of existing stubs and notify the Engineer of any deviation from the plans. Where connection to an existing manhole that does not have an existing stub or the stub is unusable due to elevation grade or alignment, the Contractor shall bore cut into existing manhole wall to make connection using approved water stop gasket, and reshape the existing manhole invert to provide smooth flow. The cost to connecting to existing manholes is incidental to the project.
- Contractor shall provide positive drainage away from all manhole covers.
- The Contractor shall prevent any construction debris from entering the existing sanitary sewer during construction.
- The Contractor shall be responsible for maintaining continuous flow of sewage through construction. Contractors proposed method for maintaining sewage flow shall be submitted and approved by the Sewer Maintenance Division (316-268-4073) prior to starting and by-passing of sewage flows.
- Any over excavation from manhole and/or pipe removal shall be backfilled and compacted in accordance with the Standard Specifications.
- No shrink or swell factors have been applied to the earthwork quantities shown on this project. All earthwork quantities are based on raw surface volume comparisons.
- Excess dirt generated from installation of underground utilities is to remain on site and be stockpiled on the lots next to the existing swales (Lot 5, Block 4 and Lot 8 Block 4) that will need to be filled in with Storm Sewer Construction.
- Contractor shall install 3" wide detachable marking tape above sewer main. Tape shall have "Caution Buried Sanitary Sewer Below" printed on tape.

## Benchmarks

BENCHMARK: CHISELED SQUARE ON THE TOP OF CURB ON THE SOUTH RETURN AT THE SOUTHWEST CORNER OF 44TH ST. S. AND MT. CARMEL CIR.  
LEGACY 3RD ADDITION,  
ELEVATION = 1283.89 (NAVD88, G18)

BENCHMARK: CHISELED SQUARE ON THE TOP OF CURB ON THE EAST RETURN AT THE NORTHEAST CORNER OF 43RD ST. S. AND CUSTER AVE.,  
LEGACY 3RD ADDITION,  
ELEVATION = 1285.01 (NAVD88, G18)



IMPROVEMENT DISTRICT

PLAN SET REVIEWED BY GARVER  
12/21/2020  
SIGNATURE DATE

NOTE: All coordinates listed are modified NAD83 Kansas State Plane Zone South unless otherwise noted. To convert listed coordinates to NAD83 Kansas State Plane Zone South coordinates multiply the northing and easting by the project scale factor of 0.999893138. Elevation datum is NAVD88 Geoid 12B unless otherwise noted.



© 2020 GARVER, LLC  
 THIS DOCUMENT, ALONG WITH THE IDEAS AND DESIGNS CONVEYED HEREIN, SHALL BE CONSIDERED INSTRUMENTS OF PROFESSIONAL SERVICE AND ARE PROPERTY OF GARVER, LLC. ANY USE, REPRODUCTION, OR DISTRIBUTION OF THIS DOCUMENT, ALONG WITH THE IDEAS AND DESIGN CONTAINED HEREIN, IS PROHIBITED UNLESS AUTHORIZED IN WRITING BY GARVER, LLC OR EXPLICITLY ALLOWED IN THE GOVERNING PROFESSIONAL SERVICES AGREEMENT FOR THIS WORK.

8535 E. 21st Street N.  
 Suite 130  
 Wichita, KS 67206  
 (316) 264-8008



REV.	DATE	DESCRIPTION	BY



CITY OF WICHITA  
 WICHITA, KANSAS  
 LEGACY 3RD  
 ADDITION  
 SANITARY SEWER

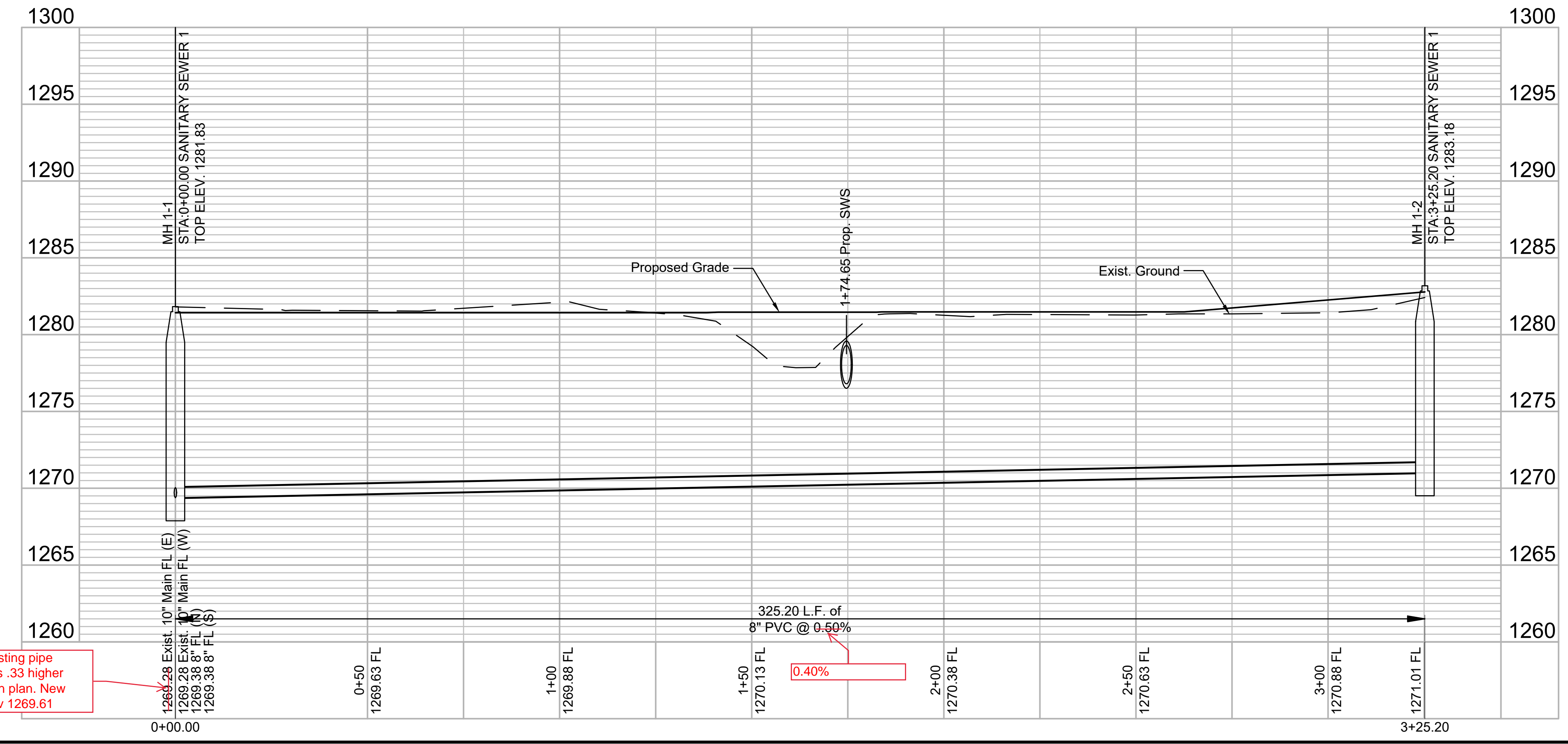
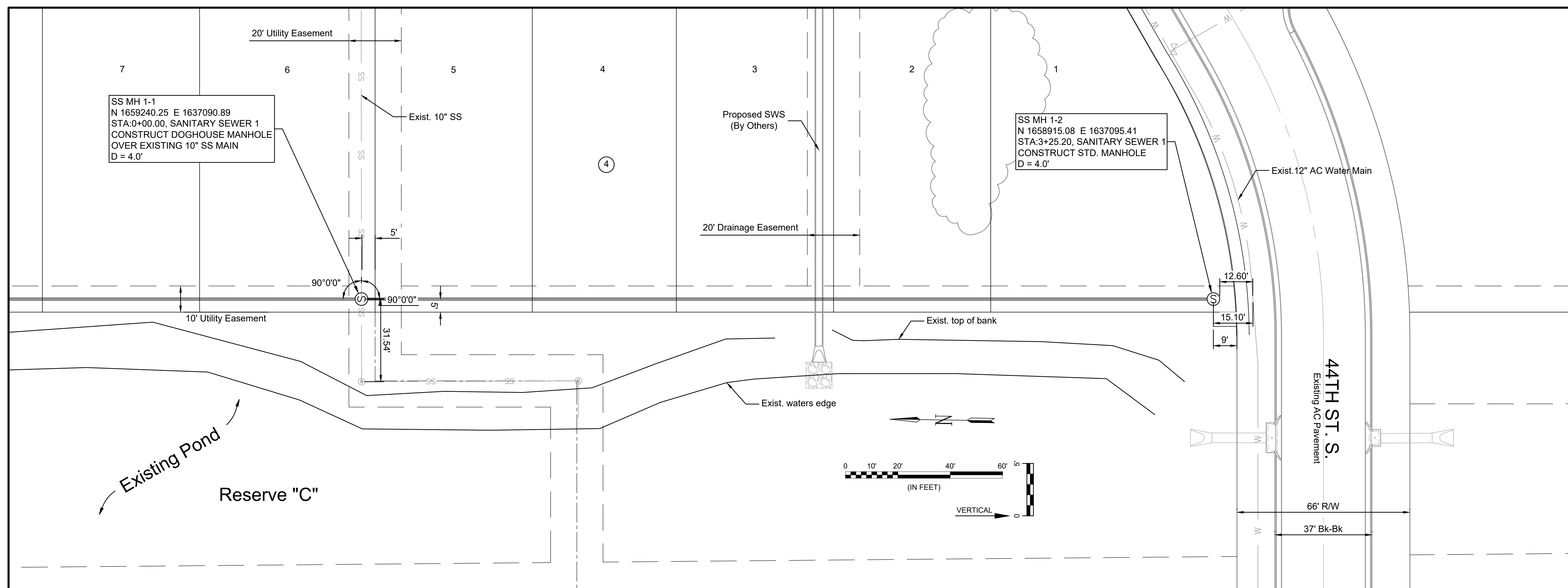
SS 1

JOB NO.: 20T41006  
 DATE: Dec 2020  
 DESIGNED BY: #  
 DRAWN BY: #

BAR IS ONE INCH ON ORIGINAL DRAWING  
 IF NOT ONE INCH ON THIS SHEET, ADJUST SCALES ACCORDINGLY.

DRAWING NUMBER

SHEET NUMBER **4** OF **16**



Existing pipe was .33 higher than plan. New elev 1269.61

File: L:\2020\20T41006 - Legacy 3rd Addition Imp Last Phase\Drawings\C3D\Sanitary Sewer Sheets\20T41006 SS 1.dwg Last Save: 12/21/2020 2:32 PM Last saved by: McCarraPiedra  
 Last plotted by: Carrera-Piedra, Mariela Plot Style: ---- Plot Scale: 1:2,984.9 Plot Date: 12/21/2020 2:44 PM Plotter used: None



© 2020 GARVER, LLC  
 THIS DOCUMENT, ALONG WITH THE IDEAS AND DESIGNS CONVEYED HEREIN, SHALL BE CONSIDERED INSTRUMENTS OF PROFESSIONAL SERVICE AND ARE PROPERTY OF GARVER, LLC. ANY USE, REPRODUCTION, OR DISTRIBUTION OF THIS DOCUMENT, ALONG WITH THE IDEAS AND DESIGN CONTAINED HEREIN, IS PROHIBITED UNLESS AUTHORIZED IN WRITING BY GARVER, LLC OR EXPLICITLY ALLOWED IN THE GOVERNING PROFESSIONAL SERVICES AGREEMENT FOR THIS WORK.

8535 E. 21st Street N.  
 Suite 130  
 Wichita, KS 67206  
 (316) 264-8008



REV.	DATE	DESCRIPTION	BY



CITY OF WICHITA  
 WICHITA, KANSAS  
 LEGACY 3RD  
 ADDITION  
 SANITARY SEWER

SS 2

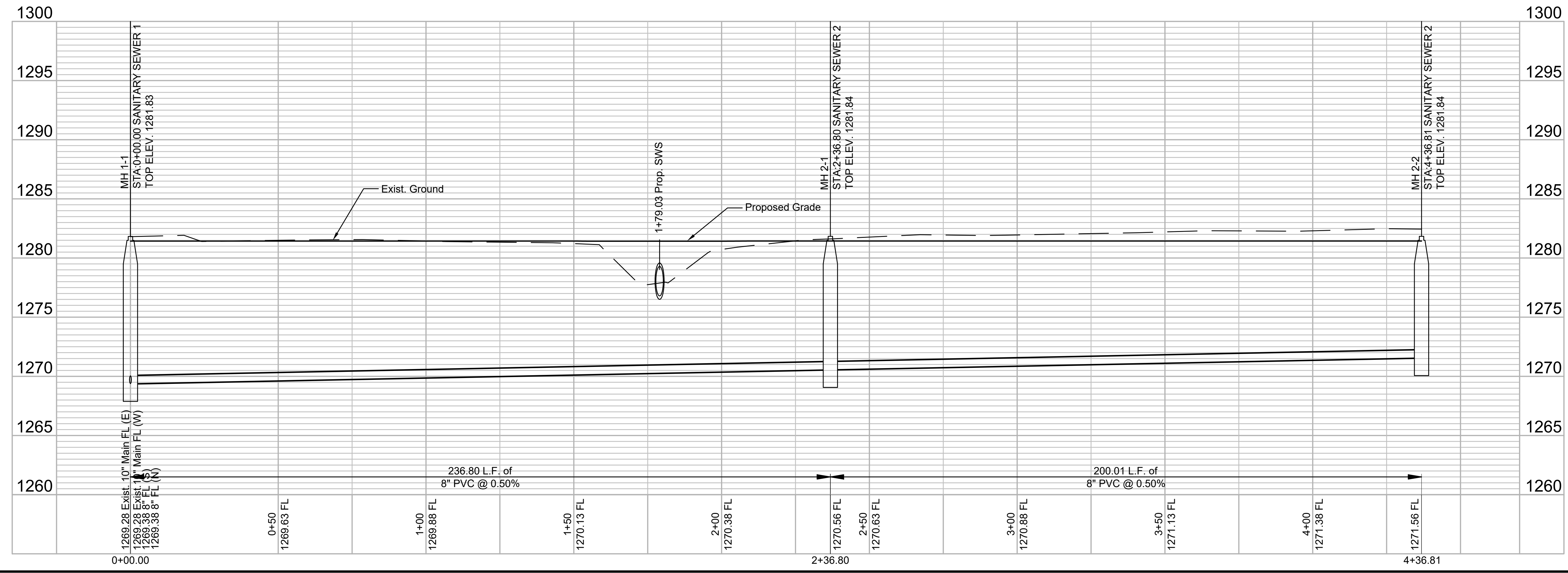
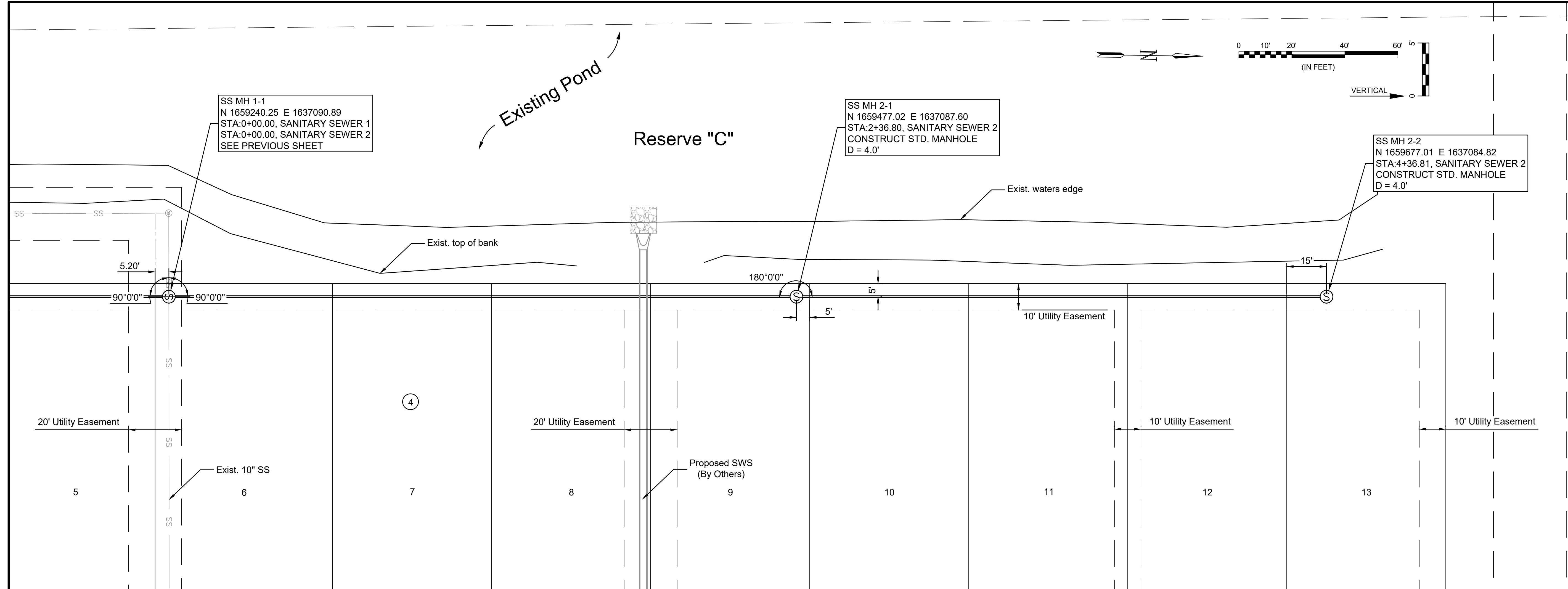
JOB NO.: 20T41006  
 DATE: Dec 2020  
 DESIGNED BY: #  
 DRAWN BY: #

BAR IS ONE INCH ON ORIGINAL DRAWING  
 IF NOT ONE INCH ON THIS SHEET, ADJUST SCALES ACCORDINGLY.

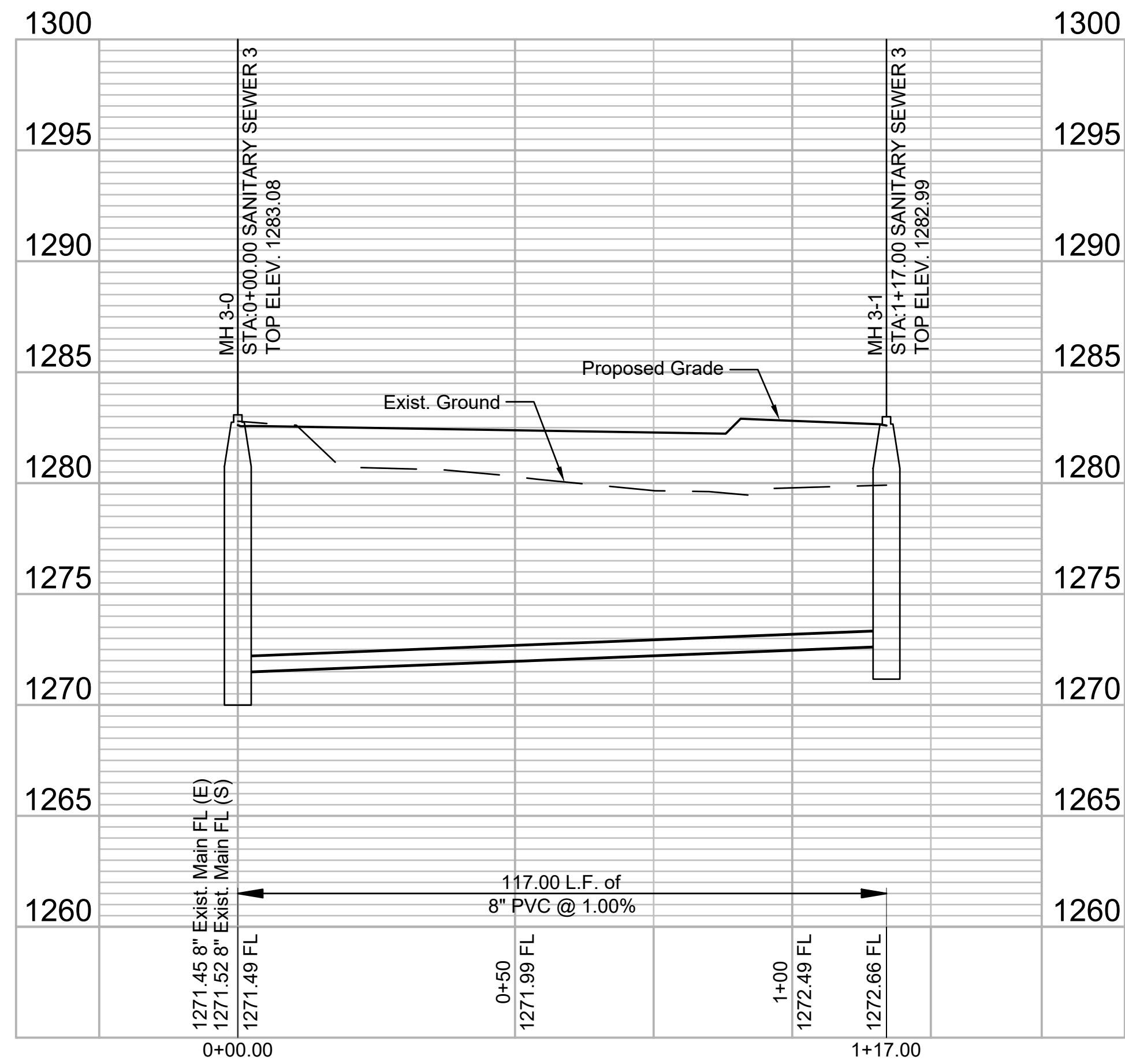
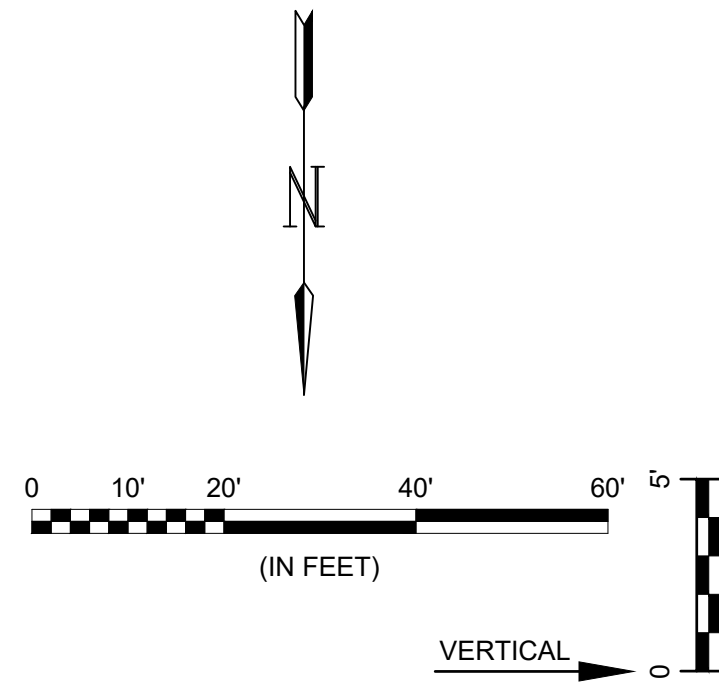
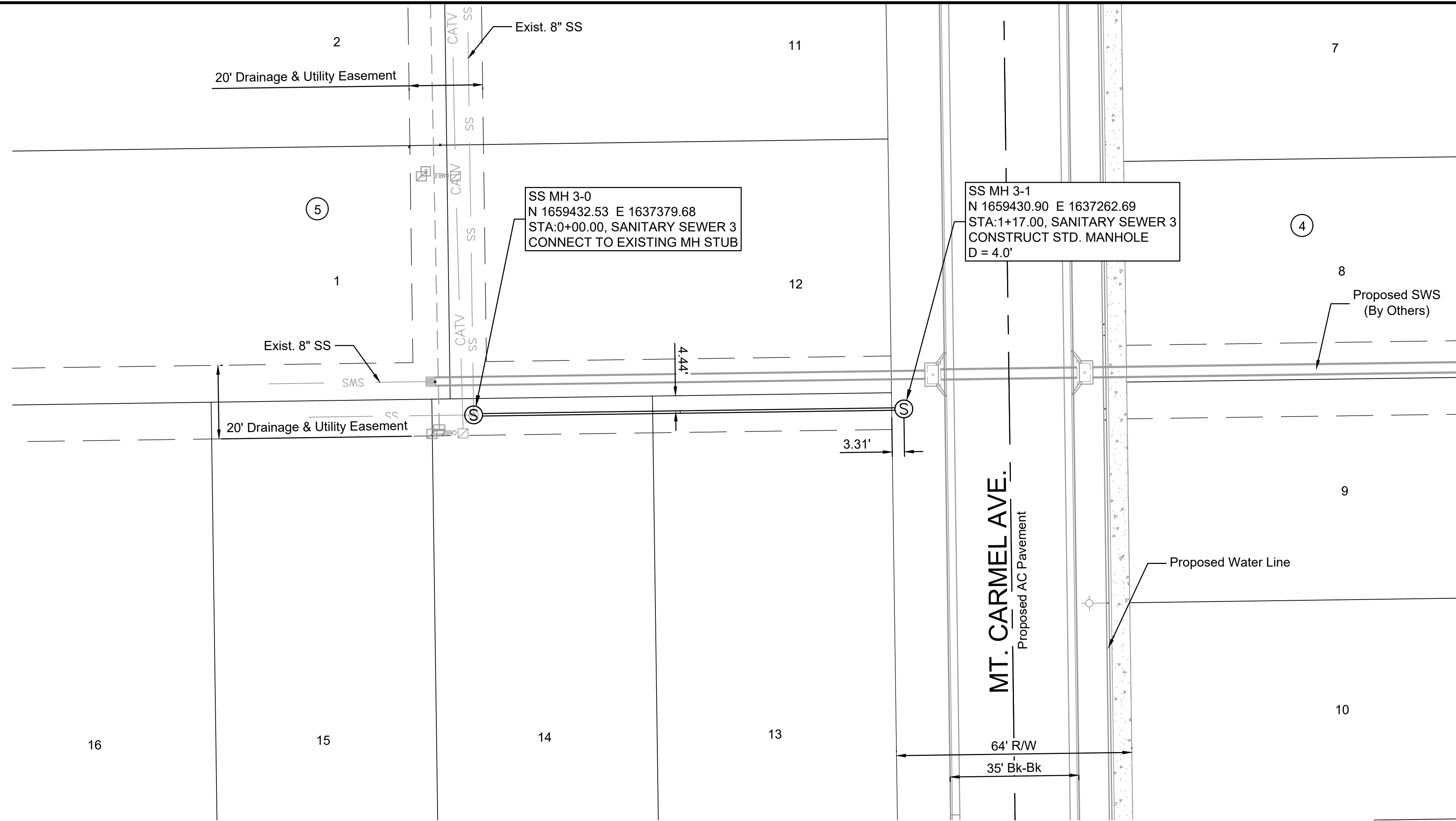
DRAWING NUMBER

SHEET NUMBER **5** OF **16**

File: L:\2020\20T41006 - Legacy 3rd Addition Imp Last Phase\Drawings\C3D\Sanitary Sewer Sheets\20T41006 SS 2.dwg Last Save: 12/21/2020 2:30 PM Plotter used: McCarraPiedra  
 Last plotted by: Carrera-Piedra, Mariela Plot Style: ---- Plot Scale: 1:2,984.9 Plot Date: 12/21/2020 2:44 PM



File: L:\2020\20T41006 - Legacy 3rd Addition Imp Last Phase\Drawings\C3D\Sanitary Sewer Sheets\20T41006 SS 3.dwg Last Save: 12/21/2020 7:51 AM Last saved by: MCarreraPiedra  
 Last plotted by: Carrera-Piedra, Mariela Plot Date: 12/21/2020 2:45 PM Plotter used: None



**GARVER**  
 © 2020 GARVER, LLC  
 THIS DOCUMENT, ALONG WITH THE IDEAS AND DESIGNS CONVEYED HEREIN, SHALL BE CONSIDERED INSTRUMENTS OF PROFESSIONAL SERVICE AND ARE PROPERTY OF GARVER, LLC. ANY USE, REPRODUCTION, OR DISTRIBUTION OF THIS DOCUMENT, ALONG WITH THE IDEAS AND DESIGN CONTAINED HEREIN, IS PROHIBITED UNLESS AUTHORIZED IN WRITING BY GARVER, LLC OR EXPLICITLY ALLOWED IN THE GOVERNING PROFESSIONAL SERVICES AGREEMENT FOR THIS WORK.

8535 E. 21st Street N.  
 Suite 130  
 Wichita, KS 67206  
 (316) 264-8008



REV.	DATE	DESCRIPTION	BY



CITY OF WICHITA  
 WICHITA, KANSAS  
 LEGACY 3RD  
 ADDITION  
 SANITARY SEWER

SS 3

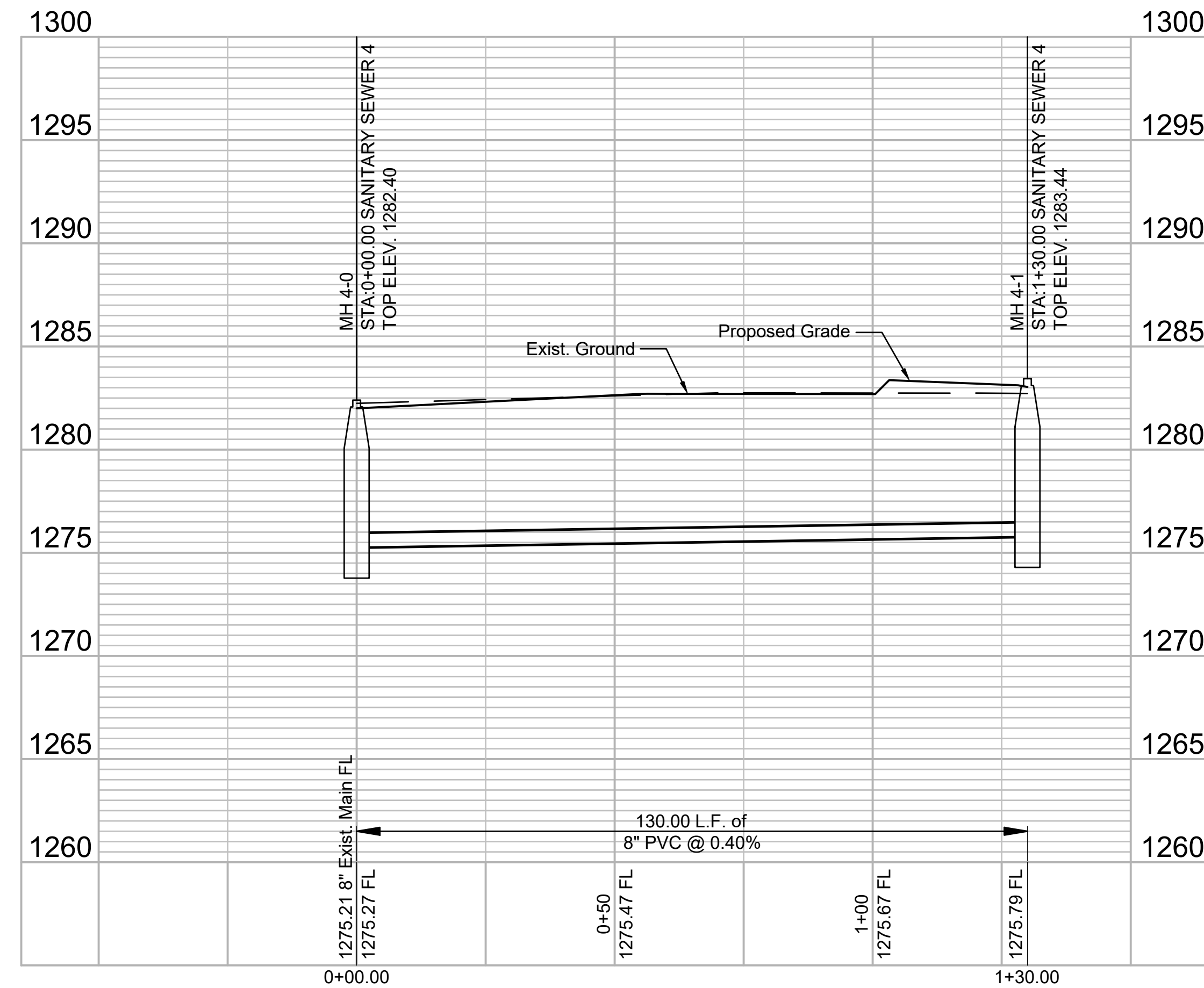
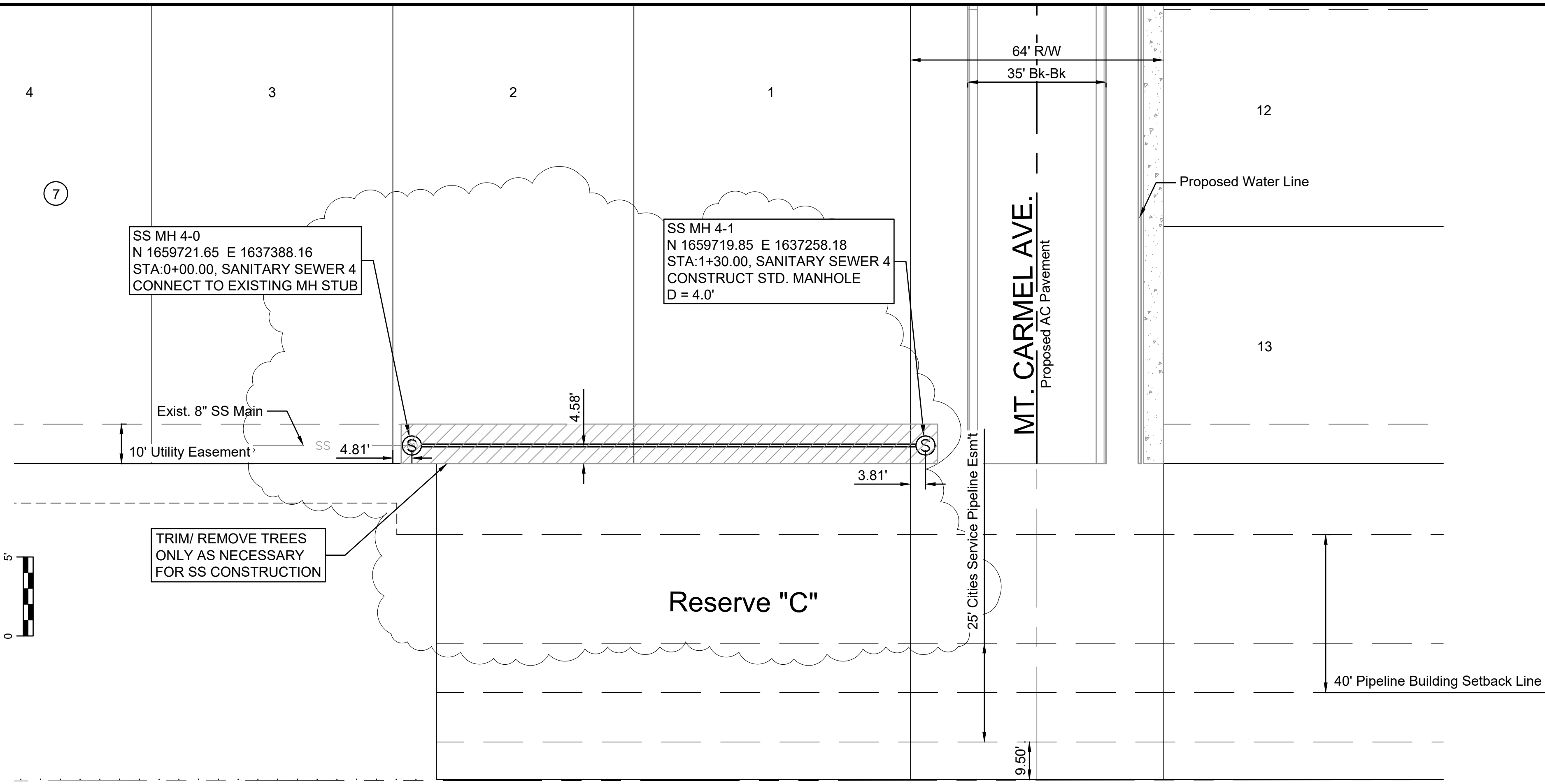
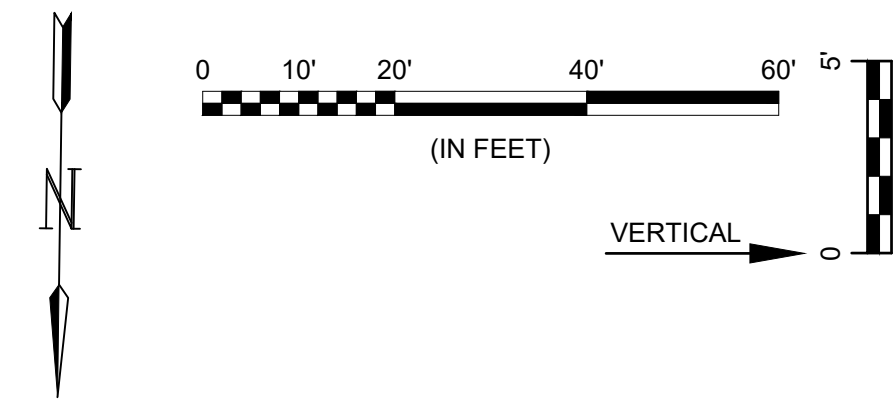
JOB NO.: 20T41006  
 DATE: Dec 2020  
 DESIGNED BY: #  
 DRAWN BY: #

BAR IS ONE INCH ON ORIGINAL DRAWING  
 IF NOT ONE INCH ON THIS SHEET, ADJUST SCALES ACCORDINGLY.

DRAWING NUMBER

SHEET NUMBER **6** OF **16**

File: L:\2020\20141006 - Legacy 3rd Addition Imp Last Phase\Drawings\C3D\Sanitary Sewer Sheets\20141006 SS 4.dwg Last Save: 12/21/2020 2:42 PM Last saved by: MCarreraPiedra  
 Last plotted by: Carrera-Piedra, Mariela Plot Style: ---- Plot Scale: 1:2,984.9 Plot Date: 12/21/2020 2:45 PM Plotter used: None



© 2020 GARVER, LLC  
 THIS DOCUMENT, ALONG WITH THE IDEAS AND DESIGNS CONVEYED HEREIN, SHALL BE CONSIDERED INSTRUMENTS OF PROFESSIONAL SERVICE AND ARE PROPERTY OF GARVER, LLC. ANY USE, REPRODUCTION, OR DISTRIBUTION OF THIS DOCUMENT, ALONG WITH THE IDEAS AND DESIGN CONTAINED HEREIN, IS PROHIBITED UNLESS AUTHORIZED IN WRITING BY GARVER, LLC OR EXPLICITLY ALLOWED IN THE GOVERNING PROFESSIONAL SERVICES AGREEMENT FOR THIS WORK.

8535 E. 21st Street N.  
 Suite 130  
 Wichita, KS 67206  
 (316) 264-8008



REV.	DATE	DESCRIPTION	BY



CITY OF WICHITA  
 WICHITA, KANSAS  
 LEGACY 3RD  
 ADDITION  
 SANITARY SEWER

SS 4

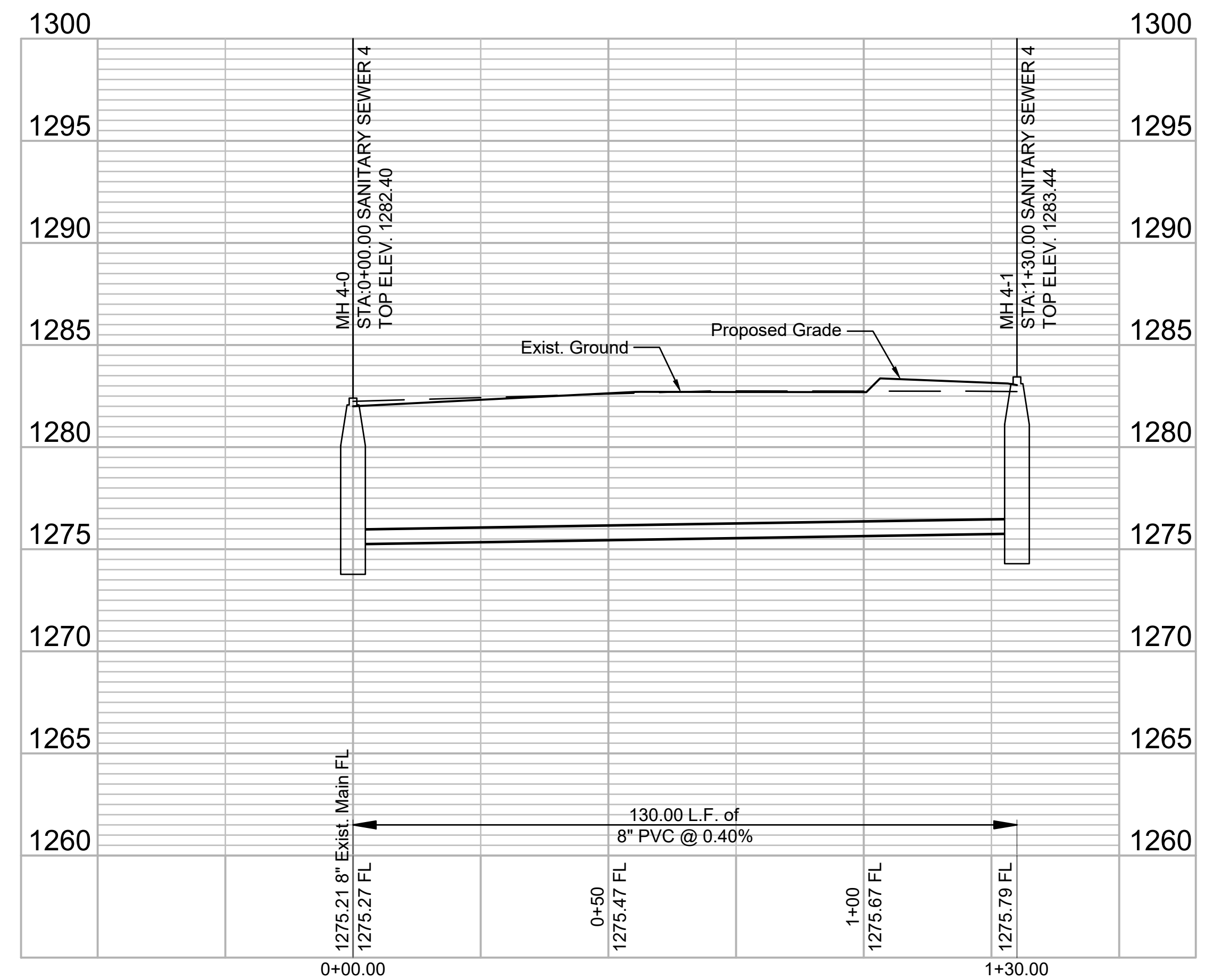
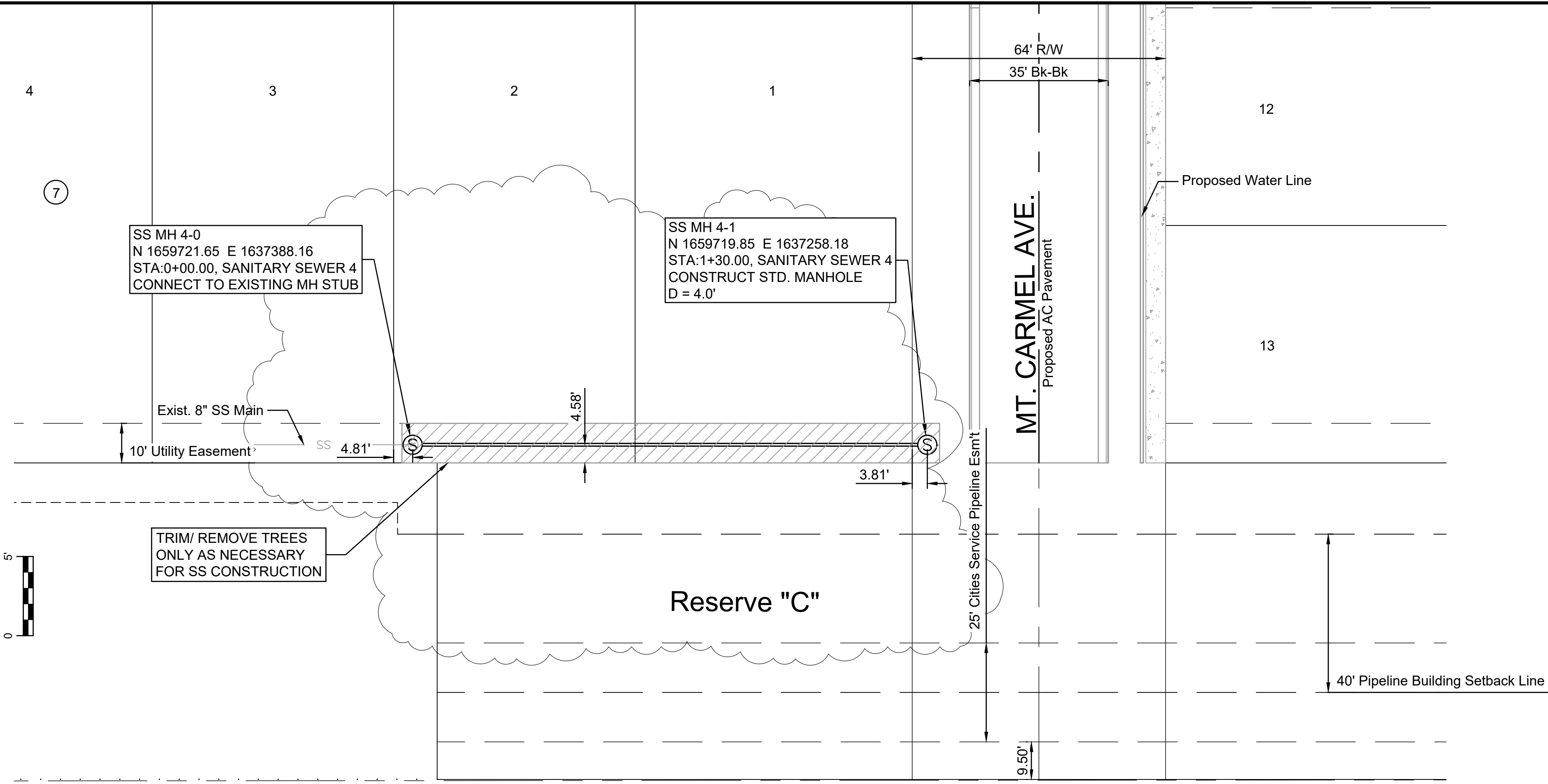
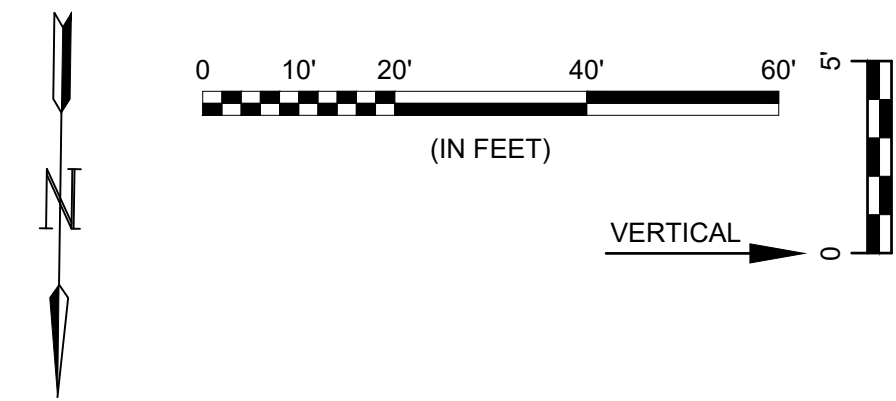
JOB NO.: 20T41006  
 DATE: Dec 2020  
 DESIGNED BY: #  
 DRAWN BY: #

BAR IS ONE INCH ON ORIGINAL DRAWING  
 IF NOT ONE INCH ON THIS SHEET, ADJUST SCALES ACCORDINGLY.

DRAWING NUMBER

SHEET NUMBER **7** OF **16**

File: L:\2020\20141006 - Legacy 3rd Addition Imp Last Phase\Drawings\C3D\Sanitary Sewer Sheets\20141006 SS 4.dwg Last Save: 12/21/2020 2:42 PM Last saved by: MCarreraPiedra  
 Last plotted by: Carrera-Piedra, Mariela Plot Style: ---- Plot Scale: 1:2,984.9 Plot Date: 12/21/2020 2:45 PM Plotter used: None



© 2020 GARVER, LLC  
 THIS DOCUMENT, ALONG WITH THE IDEAS AND DESIGNS CONVEYED HEREIN, SHALL BE CONSIDERED INSTRUMENTS OF PROFESSIONAL SERVICE AND ARE PROPERTY OF GARVER, LLC. ANY USE, REPRODUCTION, OR DISTRIBUTION OF THIS DOCUMENT, ALONG WITH THE IDEAS AND DESIGN CONTAINED HEREIN, IS PROHIBITED UNLESS AUTHORIZED IN WRITING BY GARVER, LLC OR EXPLICITLY ALLOWED IN THE GOVERNING PROFESSIONAL SERVICES AGREEMENT FOR THIS WORK.

8535 E. 21st Street N.  
 Suite 130  
 Wichita, KS 67206  
 (316) 264-8008



REV.	DATE	DESCRIPTION	BY



CITY OF WICHITA  
 WICHITA, KANSAS  
 LEGACY 3RD  
 ADDITION  
 SANITARY SEWER

SS 4

JOB NO.: 20T41006  
 DATE: Dec 2020  
 DESIGNED BY: #  
 DRAWN BY: #

BAR IS ONE INCH ON ORIGINAL DRAWING  
 IF NOT ONE INCH ON THIS SHEET, ADJUST SCALES ACCORDINGLY.

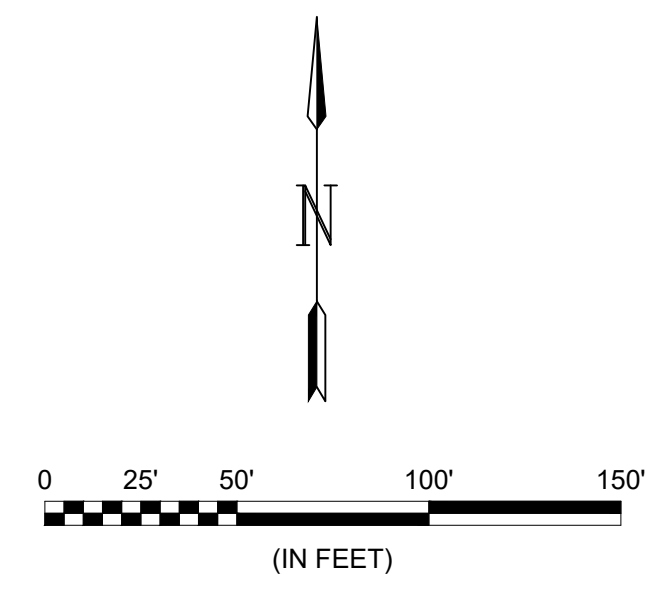
DRAWING NUMBER

SHEET NUMBER **7** OF **16**

File: L:\2020\20141006 - Legacy 3rd Addition Imp Last Phase\Drawings\C3D\Sanitary Sewer Sheets\20141006 BUBBLE MAPS.dwg Last Save: 12/11/2020 11:39 AM Last saved by: MCarrera\Piedra  
 Last plotted by: Carrera-Piedra, Mariela Plot Style: ---- Plot Scale: 1:2,984.9 Plot Date: 12/21/2020 2:46 PM Plotter used: None



Point Table			
Point #	Northing	Easting	Description
600	1658915.08	1637095.41	MH 1-1
601	1659240.25	1637090.89	MH 1-2
602	1659477.14	1637087.57	MH 2-1
603	1659677.01	1637084.82	MH 2-2
604	1659432.53	1637379.68	MH 3-0
605	1659430.90	1637262.69	MH 3-1
606	1659721.65	1637388.16	MH 4-0
607	1659719.85	1637258.18	MH 4-1



© 2020 GARVER, LLC  
 THIS DOCUMENT, ALONG WITH THE IDEAS AND DESIGNS CONVEYED HEREIN, SHALL BE CONSIDERED INSTRUMENTS OF PROFESSIONAL SERVICE AND ARE PROPERTY OF GARVER, LLC. ANY USE, REPRODUCTION, OR DISTRIBUTION OF THIS DOCUMENT, ALONG WITH THE IDEAS AND DESIGN CONTAINED HEREIN, IS PROHIBITED UNLESS AUTHORIZED IN WRITING BY GARVER, LLC OR EXPLICITLY ALLOWED IN THE GOVERNING PROFESSIONAL SERVICES AGREEMENT FOR THIS WORK.

8535 E. 21st Street N.  
 Suite 130  
 Wichita, KS 67206  
 (316) 264-8008



REV.	DATE	DESCRIPTION	BY



CITY OF WICHITA  
 WICHITA, KANSAS  
 LEGACY 3RD  
 ADDITION  
 SANITARY SEWER

BUBBLE MAP  
 (SS)

JOB NO.: 20T41006  
 DATE: Dec 2020  
 DESIGNED BY: #  
 DRAWN BY: #

BAR IS ONE INCH ON ORIGINAL DRAWING  
 IF NOT ONE INCH ON THIS SHEET, ADJUST SCALES ACCORDINGLY.

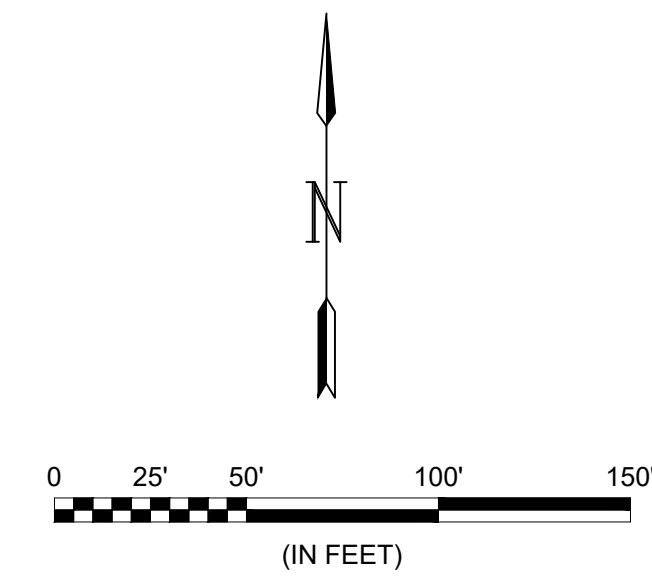
DRAWING NUMBER

SHEET NUMBER **8** OF **16**

File: L:\2020\20141006 - Legacy 3rd Addition Imp Last Phase\Drawings\C3D\Sanitary Sewer Sheets\20141006 BUBBLE MAPS.dwg Last Save: 12/11/2020 11:39 AM Last saved by: MCarrera\Piedra  
 Last plotted by: Carrera-Piedra, Mariela Plot Style: ---- Plot Scale: 1:2,984.9 Plot Date: 12/21/2020 2:46 PM Plotter used: None



Point Table			
Point #	Northing	Easting	Description
100	1659800.25	1636956.84	ADDITION COR
101	1659806.14	1637380.80	ADDITION COR
102	1659726.15	1637381.91	ADDITION COR
104	1659604.49	1637263.59	BLOCK COR
105	1659546.50	1637264.40	BLOCK COR
106	1658989.00	1637272.15	BLOCK COR
107	1658951.16	1637208.67	BLOCK COR
108	1659012.02	1637521.85	BLOCK COR
109	1658911.02	1637270.23	BLOCK COR
111	1658876.73	1637212.70	BLOCK COR
112	1659549.97	1637514.37	BLOCK COR
113	1659550.78	1637572.37	BLOCK COR
114	1659803.58	1637196.82	ADDITION COR
115	1659804.47	1637260.81	ADDITION COR



© 2020 GARVER, LLC  
 THIS DOCUMENT, ALONG WITH THE IDEAS AND DESIGNS CONVEYED HEREIN, SHALL BE CONSIDERED INSTRUMENTS OF PROFESSIONAL SERVICE AND ARE PROPERTY OF GARVER, LLC. ANY USE, REPRODUCTION, OR DISTRIBUTION OF THIS DOCUMENT, ALONG WITH THE IDEAS AND DESIGN CONTAINED HEREIN, IS PROHIBITED UNLESS AUTHORIZED IN WRITING BY GARVER, LLC OR EXPLICITLY ALLOWED IN THE GOVERNING PROFESSIONAL SERVICES AGREEMENT FOR THIS WORK.

8535 E. 21st Street N.  
 Suite 130  
 Wichita, KS 67206  
 (316) 264-8008



REV.	DATE	DESCRIPTION	BY



CITY OF WICHITA  
 WICHITA, KANSAS  
 LEGACY 3RD  
 ADDITION  
 SANITARY SEWER

SUBDIVISION  
 BUBBLE MAP

JOB NO.: 20T41006  
 DATE: Dec 2020  
 DESIGNED BY: #  
 DRAWN BY: #

BAR IS ONE INCH ON ORIGINAL DRAWING  
 0 1" IF NOT ONE INCH ON THIS SHEET, ADJUST SCALES ACCORDINGLY.

DRAWING NUMBER

SHEET NUMBER **9** OF **16**