

SANITARY SEWER EXTENSION

to serve

Cedar Creek Addition, Phase 2 CITY OF WICHITA, KANSAS

Gary Janzen, P.E. City Engineer
Project Number 468-2021-004773

O.C.A. NO. XXXXX

Lateral 3, Main 22 Four Mile Creek

GENERAL NOTES:

1. The Contractor shall comply with all applicable safety regulations. All construction shall be completed following current City Standard Specifications and Special Provisions.

2. Contractor will be required to provide notice to utility companies a minimum of seventy-two (72) hours prior to any excavation, as follows:

Kansas One-Call 687-2470

The Contractor must notify the following in case of an emergency:

AT&T	1-800-246-8464
Butler Rural Electric Cooperative	1-316-321-9600
Black Hills Energy	1-800-694-8989
City of Wichita Water & Sewer Dept.	1-316-219-8921
City of Wichita Stormwater	1-316-268-4090
City of Wichita Traffic	1-316-268-4034
Cox Communications	1-888-249-3530
Kansas Gas Service	1-888-482-4950
Evergny	1-800-544-4857

3. Utility service lines, poles, etc. are to be adjusted as necessary by others prior to construction unless the plans specifically call for their adjustment by the Contractor or unless the plans specifically identify a utility to be adjusted by its owner during construction. Existing utilities and their location, as shown on the plans, represent the best information obtainable for design. The Contractor will be required to work around existing utilities within the right-of-way which do not conflict with proposed construction.

4. Rubble from the removal of miscellaneous structures and excess excavation which is to be wasted shall be disposed of on sites to be provided by the Contractor. These sites shall be approved by the Engineer as to suitability, appearance and site location. Locations, in the opinion of the Engineer, that will leave an unsightly appearance will not be approved. All disposal sites must be approved by the Kansas Department of Health and Environment. Material either stockpiled or disposed of in a flood plain will require a Kansas State Board of Agriculture permit. Any material dumped in waters of the United States or wetlands is subject to U.S. Corps. of Engineers permitting regulations. Any material buried or stockpiled beyond approved construction limits will require additional archaeological investigations unless buried in a previously approved borrow location.

5. Trees and shrubs in public right-of-way which are in direct conflict with proposed new construction shall be removed by the Contractor with the Engineer's approval. Trees and shrubs which are not in direct conflict with proposed new construction shall be saved and protected from damage.

6. The Contractor shall give all property owners and/or tenants of developed property abutting the construction of this project a minimum of ten (10) days notice prior to start of construction.

7. The Contractor shall be responsible for preserving property irons. The Contractor will be required to re-establish any property irons which are damaged or destroyed by his construction operations. Such irons shall be re-established by a licensed land surveyor in accordance with state laws.

8. If traffic will be impacted by construction, a traffic control plan must be submitted and approved by the City Traffic Engineer, at traffic@wichita.gov before construction can begin. The Contractor shall be responsible for all traffic control measures to facilitate construction. All construction zone markings and signage shall conform to the latest version of the Manual on Uniform Traffic Control Devices (MUTCD) as published by the US Dept. of Transportation, Federal Highway Administration. All costs associated with construction markings and signage shall be the Contractors responsibility.

10. All elevations shown are NAVD 88.

11. All areas disturbed during construction that will not be under proposed pavement shall be restored to match existing conditions.

12. The Contractor shall protect from damage and support existing utilities through constructions as approved by the utility owner and the Engineer at the contractors expense.

13. Contractor shall limit the extent of trench openings overnight and weekends to less than 50 feet.

14. All stubs and plugged pipes shall be located with green plastic tape in the same manner as risers.

15. Connecting to Existing Manholes:

Prior to laying sewer lines using existing stubs in existing manholes, the Contractor shall expose and verify the elevation, grade and alignment of existing stubs and notify the Engineer of any deviation from the plans. Where connection to an existing manhole that does not have an existing stub or the stub is unusable due to elevation grade or alignment, the Contractor shall bore cut into existing manhole wall to make connection using approved water stop gasket, and reshape the existing manhole invert to provide smooth flow. The cost to connecting to existing manholes is incidental to the project.

16. Contractor shall provide positive drainage away from all manhole covers.

17. The Contractor shall prevent any construction debris from entering the existing sanitary sewer during construction.

18. The Contractor shall be responsible for maintaining continuous flow of sewage through construction. Contractors proposed method for maintaining sewage flow shall be submitted and approved by the Sewer Maintenance Division (316-268-4073) prior to starting and by-passing of sewage flows.

19. Any over excavation from manhole and pipe removal shall be backfilled with AB-3 compacted to 90-95% ASTM D698.

20. No shrink or swell factors have been applied to the earthwork quantities shown on this project. All earthwork quantities are based on raw surface volume comparisons.

21. Excess dirt generated from installation of underground utilities is to remain on site and be stockpiled on Lots 1-20, Block 5.

22. Contractor shall restore existing grade except where indicated. Temporary grading around proposed manholes shall be provided as indicated by plans. All temporary grading will be bid as 'MH, Standard SS (4') & (5)'. Permanent easement grading will be included in the companion Storm Water Drain project.

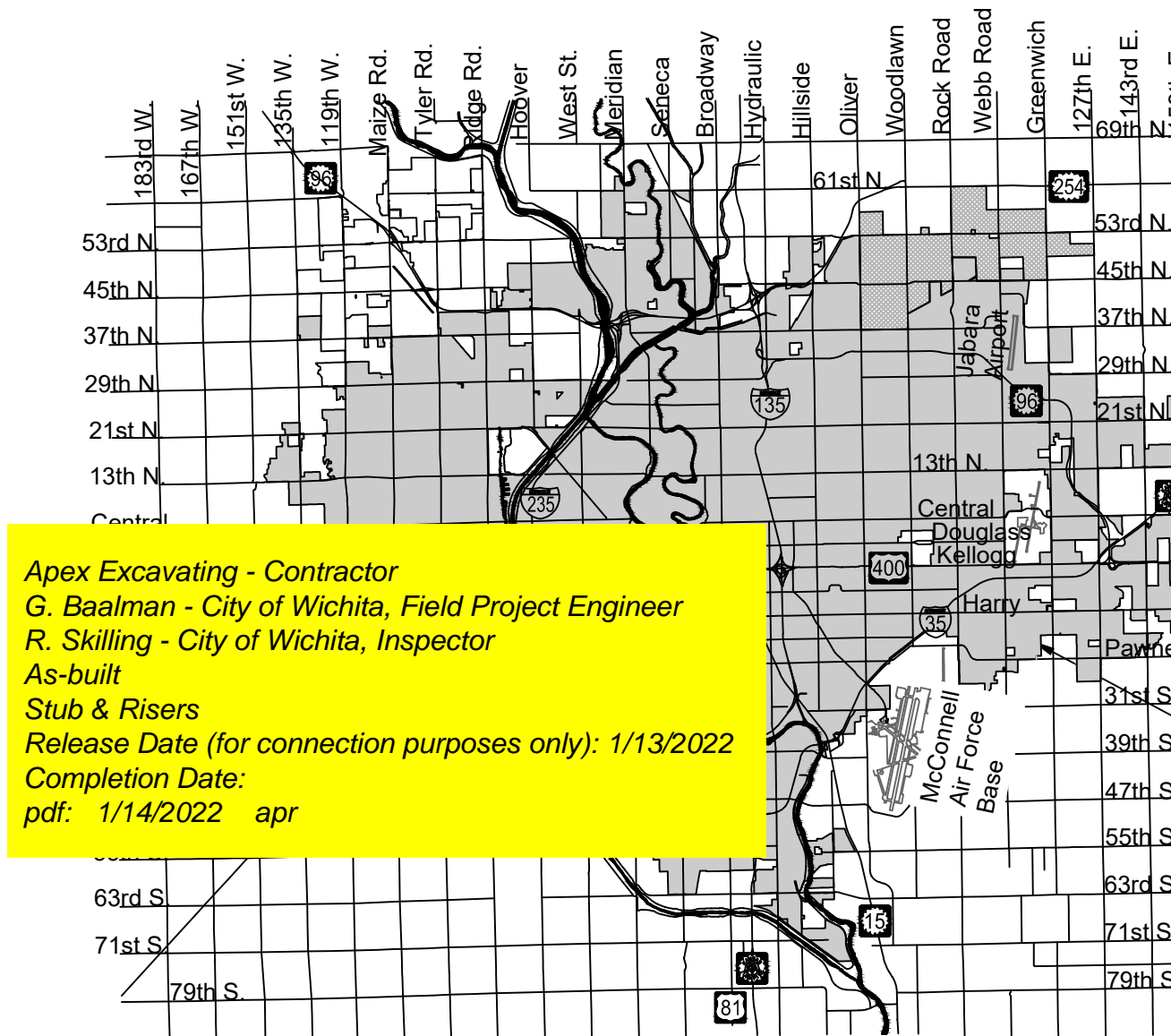
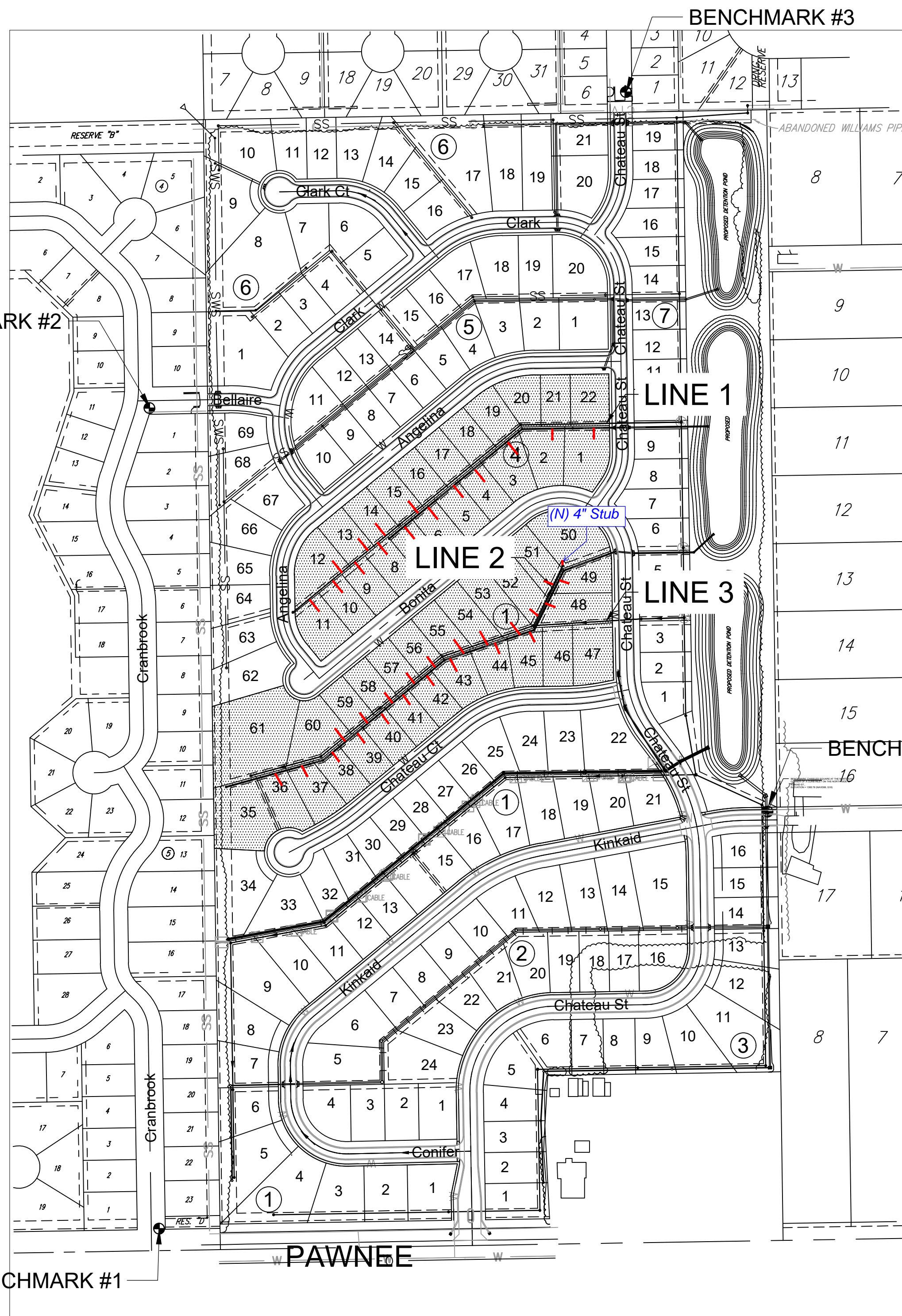
Benchmarks

BENCHMARK #1:
CHISELED SQUARE ON THE TOP OF CURB ON THE EAST SIDE OF CRANBROOK, 52 FEET NORTH OF THE CENTERLINE OF PAWNEE.
ELEVATION = 1387.69 (NAVD88)

BENCHMARK #2:
CHISELED SQUARE ON THE TOP OF CURB AT THE SOUTHEAST CORNER OF CRANBROOK AND BELAIRE.
ELEVATION = 1374.71 (NAVD88)

BENCHMARK #3:
CHISELED SQUARE ON THE TOP OF CURB ON THE EAST SIDE OF CHATEAU, NORTH CURB RETURN OF THE HAMMER HEAD TURNAROUND.
ELEVATION = 1361.42 (NAVD88)

BENCHMARK #4:
BENCHMARK: CHISELED SQUARE AT THE NORTHEAST CORNER OF A CURB INLET ON THE NORTH SIDE OF KINKAID ST.
ELEVATION = 1366.78 (NAVD88, G18)

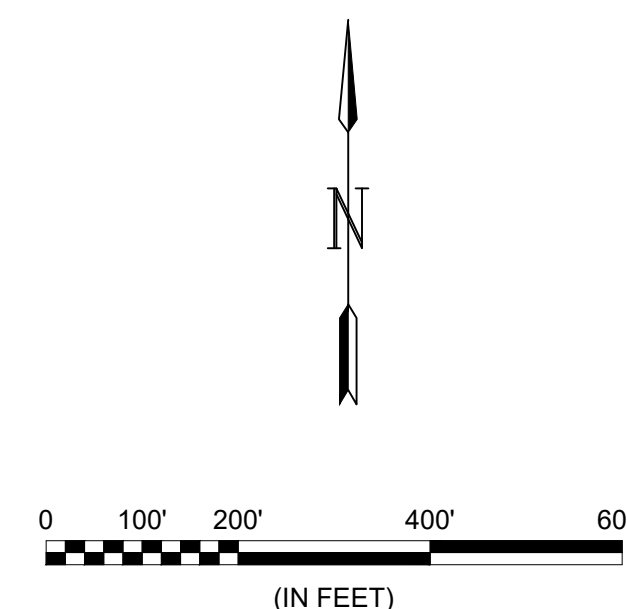


Apex Excavating - Contractor
G. Baalman - City of Wichita, Field Project Engineer
R. Skilling - City of Wichita, Inspector
As-built
Stub & Risers
Release Date (for connection purposes only): 1/13/2022
Completion Date:
pdf: 1/14/2022 apr

PROJECT LOCATION

Vicinity Map

SHEET INDEX	
SHEET	TITLE
1	Titlesheet
2	Vertical Riser
3	Manhole Frame & Cover
4	Pre-Cast Sanitary Sewer Manhole
5	SS Line 1
6	SS Line 1 (2)
7	SS Line 2
8	SS Line 3
9	SS Line 3 (2)
10	Coordinate Map
11	Point Tables
12	Erosion Control Plan
13	BOC
14	Silt Fc
15	Straw Bale
16	SIP
17	SDP
18	Final Plat



PLAN SET REVIEWED BY GARVER
SIGNATURE _____ DATE 9/8/2021

NOTE: All coordinates listed are modified NAD83 Kansas State Plane Zone South unless otherwise noted. To convert listed coordinates to NAD83 Kansas State Plane Zone South coordinates multiply the northing and easting by the project scale factor of 0.99988532. Elevation datum is NAVD88 Geoid 12B unless otherwise noted.



SEPT 2021

PLANS PREPARED BY

GARVER
8535 E. 21st Street N.
Suite 130
Wichita, KS 67206
(316) 264-8008
www.GarverUSA.com
Project No. 20T41009

Sanitary Sewer Riser Location Table

Project Name: SS Ext to serve Cedar Creek Addn, Ph 2
 Project Location: N of Pawnee W of Greenwich
 Project No: 468-2021-004773
 OCA No: E1090 / 47264721
 Contractor: Apex
 Inspector: Roger Skilling

Riser No.	Line No.	Station	Distance from Main to Riser (Lt./Rt.)	Distance from	
				Upstream MH	Downstream MH
1	1	2+04	15' LT	173'	204'
2	1	3+06	15' LT	71'	306'
3	1	4+31	15' LT	316'	53'
4	1	5+30	15' LT	217'	152'
5	1	6+00	15' LT	147'	222'
6	1	6+69	15' LT	78'	291'
7	1	7+02	5' RT	45'	324'
8	1	7+40	15' LT	7'	362'
9	1	7+76	5' RT	296'	29'
10	1	8+10	15' LT	262'	63'
11	1	8+50	5' RT	222'	103'
12	1	8+80	15' LT	192'	133'
13	1	9+25	5' RT	147'	178'
14	1	9+50	15' LT	122'	203'
15	1	10+20	15' LT	52'	273'
16	2	1+26	12.5 RT	31'	126'
17	2	1+10	7.5 LT	47'	110'
18	2	0+60	12.5 RT	97'	60'
19	2	0+31	7.5' LT	126'	31'
20	3	3+75	15' LT	206'	20'
21	3	3+90	5' RT	191'	35'
22	3	4+45	15' LT	136'	90'
23	3	4+60	5' RT	121'	105'
24	3	5+25	5' RT	56'	170'
25	3	5+40	15' LT	41'	185'
26	3	6+05	5' RT	347'	24'
27	3	6+46	15' LT	306'	65'
28	3	6+70	5' RT	282'	89'
29	3	7+16	15' LT	236'	135'
30	3	7+40	5' RT	212'	159'
31	3	7+86	15' LT	166'	205'
32	3	8+10	5' RT	142'	229'

33	3	8+56	15' LT	96'	275'
34	3	8+90	5' RT	62'	309'
35	3	9+20	15' LT	32'	339'
36	3	10+00	15' LT	123'	48'
37	3	10+65	15' LT	58'	113'



© 2021 GARVER, LLC
 THIS DOCUMENT, ALONG WITH THE IDEAS AND DESIGNS CONVEYED HEREIN, SHALL BE CONSIDERED INSTRUMENTS OF PROFESSIONAL SERVICE AND ARE PROPERTY OF GARVER, LLC. ANY USE, REPRODUCTION, OR DISTRIBUTION OF THIS DOCUMENT, ALONG WITH THE IDEAS AND DESIGN CONTAINED HEREIN, IS PROHIBITED UNLESS AUTHORIZED IN WRITING BY GARVER, LLC OR EXPLICITLY ALLOWED IN THE GOVERNING PROFESSIONAL SERVICES AGREEMENT FOR THIS WORK.

8535 E. 21st Street N.
 Suite 130
 Wichita, KS 67206
 (316) 264-8008



REV.	DATE	DESCRIPTION	BY



CITY OF WICHITA
 WICHITA, KANSAS
 CEDAR CREEK ADD,
 PHASE 2 - SANITARY

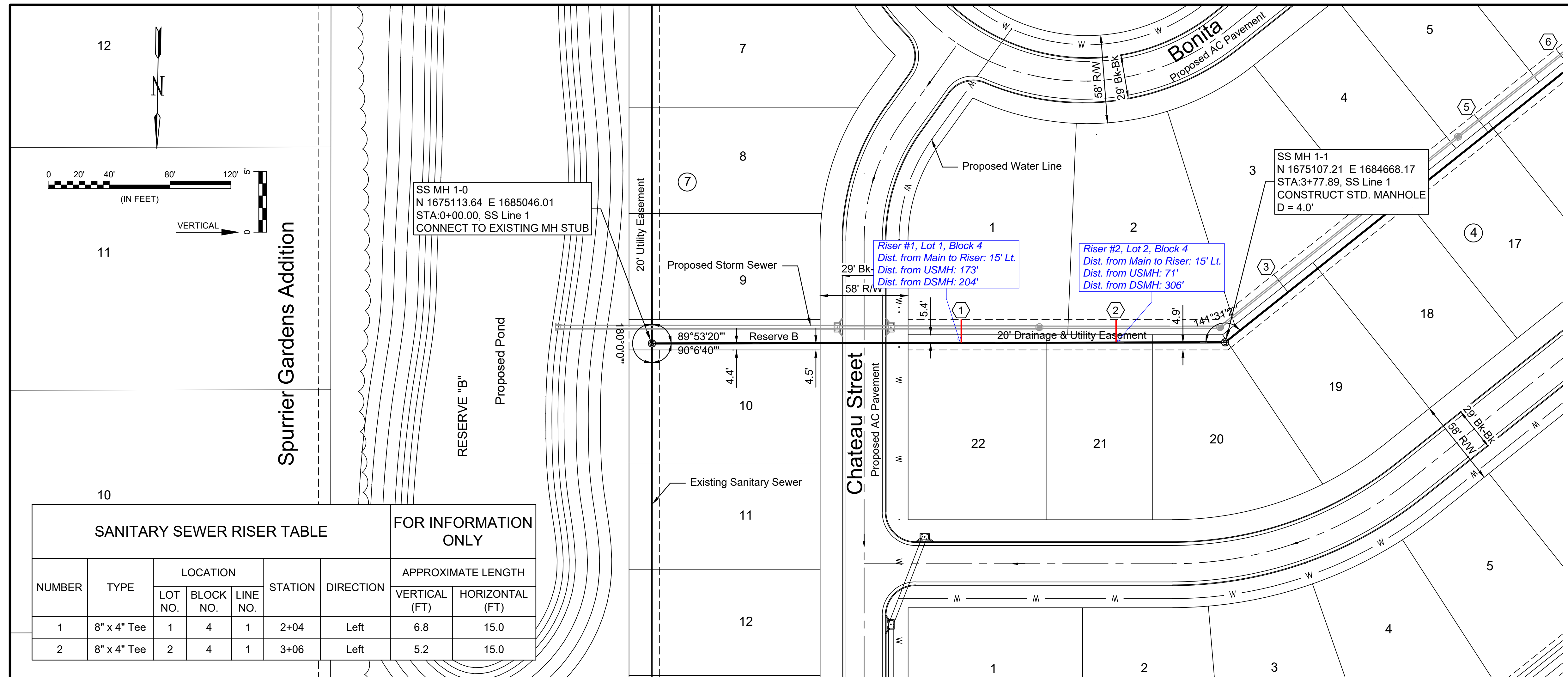
SS Line 1

JOB NO.: 20T41009
 DATE: SEPT 2021
 DESIGNED BY: CMB
 DRAWN BY: MCP

BAR IS ONE INCH ON ORIGINAL DRAWING
 IF NOT ONE INCH ON THIS SHEET, ADJUST SCALES ACCORDINGLY.

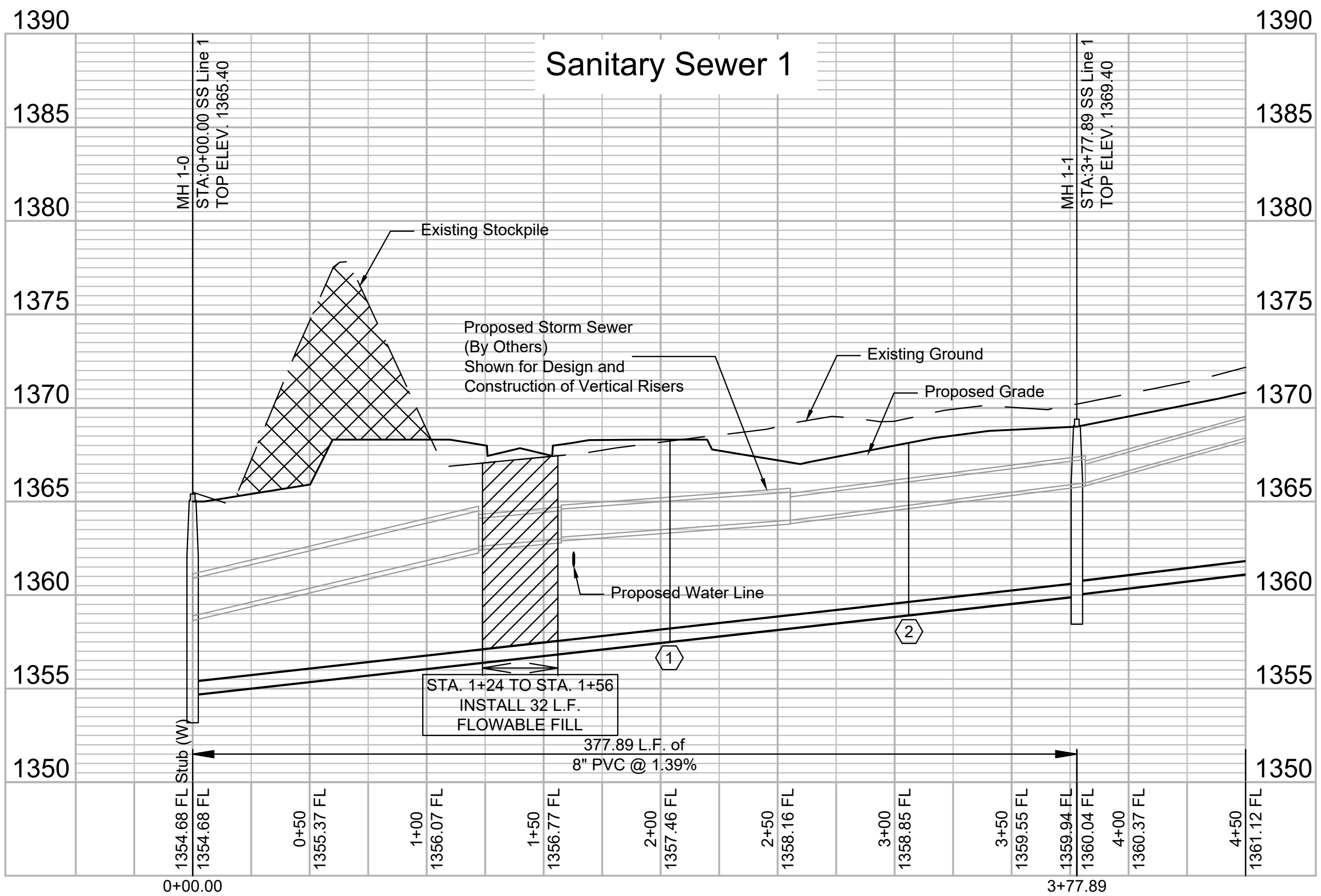
DRAWING NUMBER

SHEET NUMBER **5** OF **18**



SANITARY SEWER RISER TABLE							FOR INFORMATION ONLY	
NUMBER	TYPE	LOCATION			STATION	DIRECTION	APPROXIMATE LENGTH	
		LOT NO.	BLOCK NO.	LINE NO.			VERTICAL (FT)	HORIZONTAL (FT)
1	8" x 4" Tee	1	4	1	2+04	Left	6.8	15.0
2	8" x 4" Tee	2	4	1	3+06	Left	5.2	15.0

Contractor shall excavate a corridor through the existing earthwork stockpile only as necessary to install sanitary sewer line. Spoils will remain on site. Bid as the item "Stockpile excavation - 1 lump sum".



File: L:\2020\20T41009 - Cedar Creek Phase 2\Drawings\C3D\Sanitary Sewer\SS Line 1.dwg, Last Save: 9/8/2021 3:48 PM, Last saved by: MCarreiraPiedra
 Last plotted by: Carreira-Piedra, Mainfile Plot Style: ---, Plot Scale: 1:2,584.9 Plot Date: 9/8/2021 3:51 PM, Plotter used: None



© 2021 GARVER, LLC
 THIS DOCUMENT, ALONG WITH THE IDEAS AND DESIGNS CONVEYED HEREIN, SHALL BE CONSIDERED INSTRUMENTS OF PROFESSIONAL SERVICE AND ARE PROPERTY OF GARVER, LLC. ANY USE, REPRODUCTION, OR DISTRIBUTION OF THIS DOCUMENT, ALONG WITH THE IDEAS AND DESIGN CONTAINED HEREIN, IS PROHIBITED UNLESS AUTHORIZED IN WRITING BY GARVER, LLC OR EXPLICITLY ALLOWED IN THE GOVERNING PROFESSIONAL SERVICES AGREEMENT FOR THIS WORK.

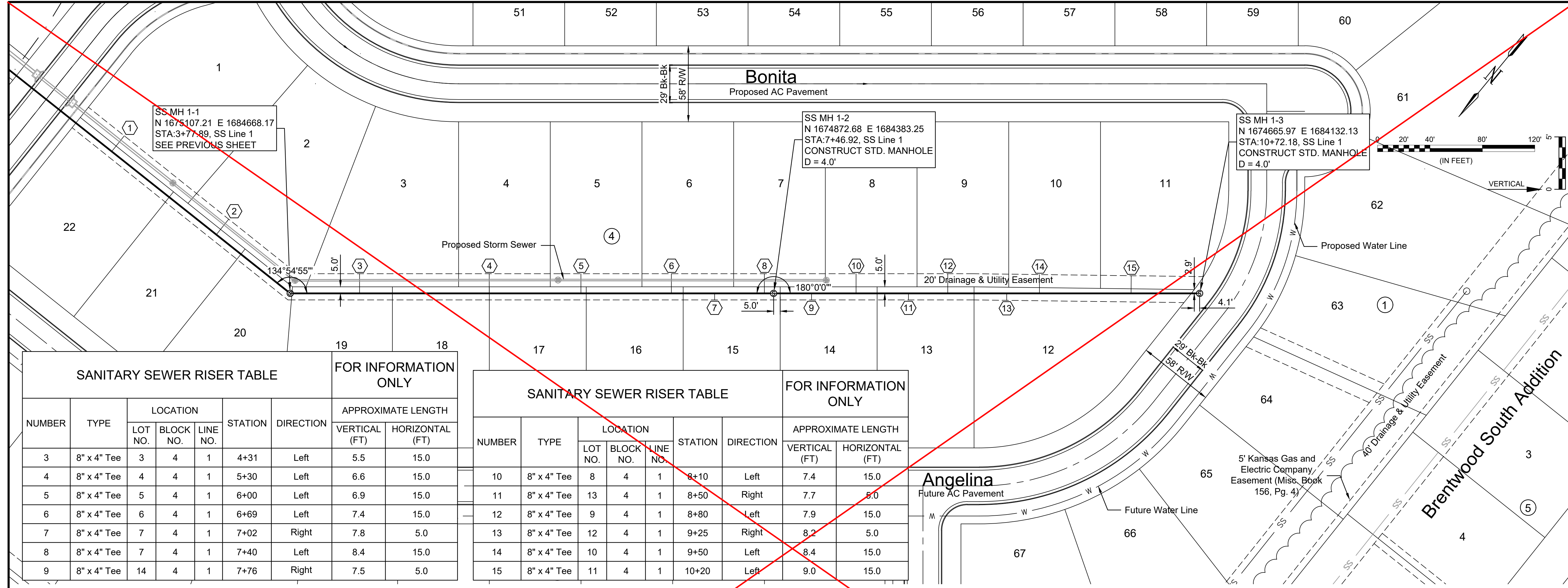
8535 E. 21st Street N.
 Suite 130
 Wichita, KS 67206
 (316) 264-8008



REV.	DATE	DESCRIPTION

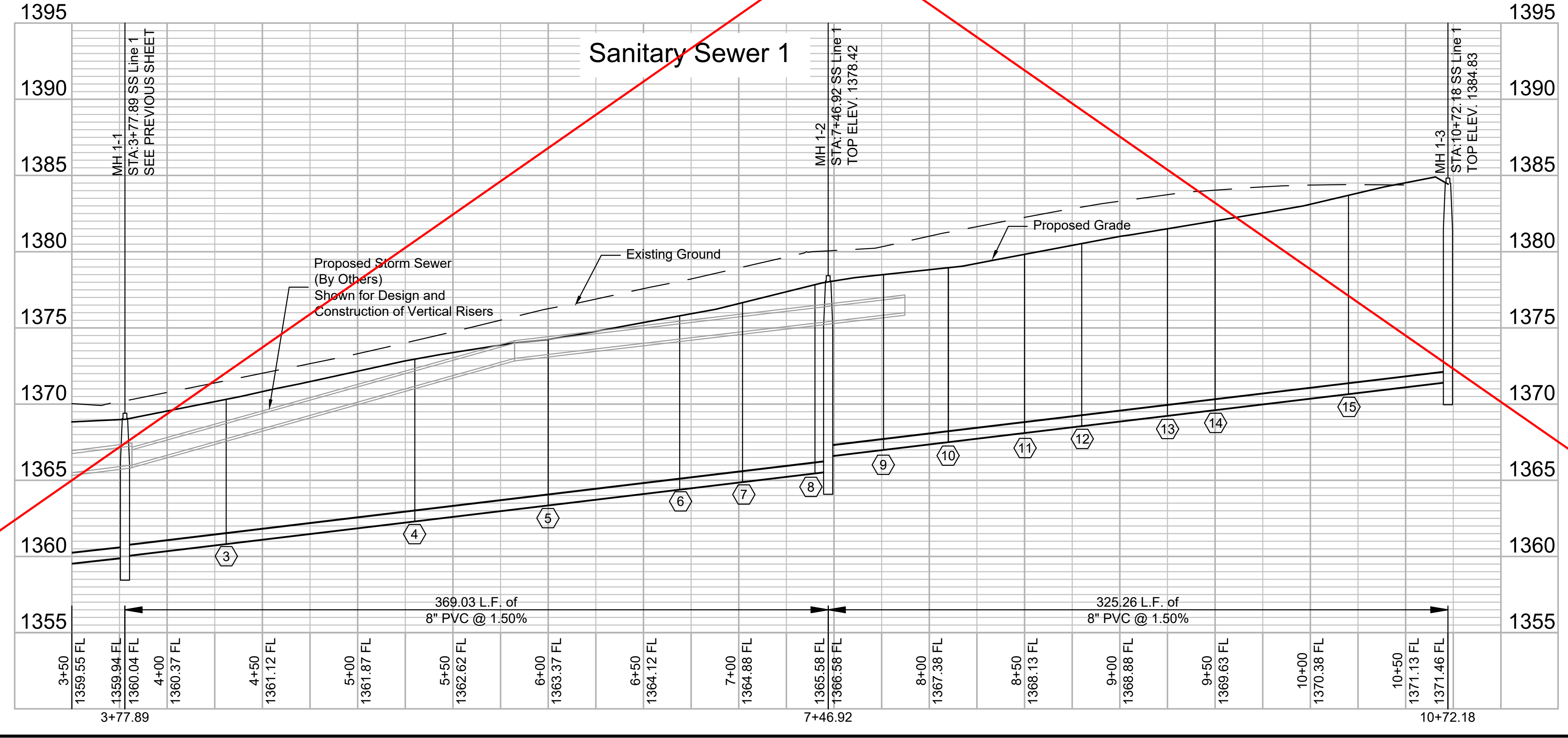
CITY OF WICHITA
 WICHITA, KANSAS
 CEDAR CREEK ADD,
 PHASE 2 - SANITARY

SS Line 1 (2)
 JOB NO.: 20T41009
 DATE: SEPT 2021
 DESIGNED BY: CMB
 DRAWN BY: MCP
 BAR IS ONE INCH ON ORIGINAL DRAWING
 IF NOT ONE INCH ON THIS SHEET, ADJUST SCALES ACCORDINGLY.
 DRAWING NUMBER
 SHEET NUMBER **6** OF **18**



SANITARY SEWER RISER TABLE						FOR INFORMATION ONLY		
NUMBER	TYPE	LOCATION			STATION	DIRECTION	VERTICAL (FT)	HORIZONTAL (FT)
		LOT NO.	BLOCK NO.	LINE NO.				
3	8" x 4" Tee	3	4	1	4+31	Left	5.5	15.0
4	8" x 4" Tee	4	4	1	5+30	Left	6.6	15.0
5	8" x 4" Tee	5	4	1	6+00	Left	6.9	15.0
6	8" x 4" Tee	6	4	1	6+69	Left	7.4	15.0
7	8" x 4" Tee	7	4	1	7+02	Right	7.8	5.0
8	8" x 4" Tee	7	4	1	7+40	Left	8.4	15.0
9	8" x 4" Tee	14	4	1	7+76	Right	7.5	5.0

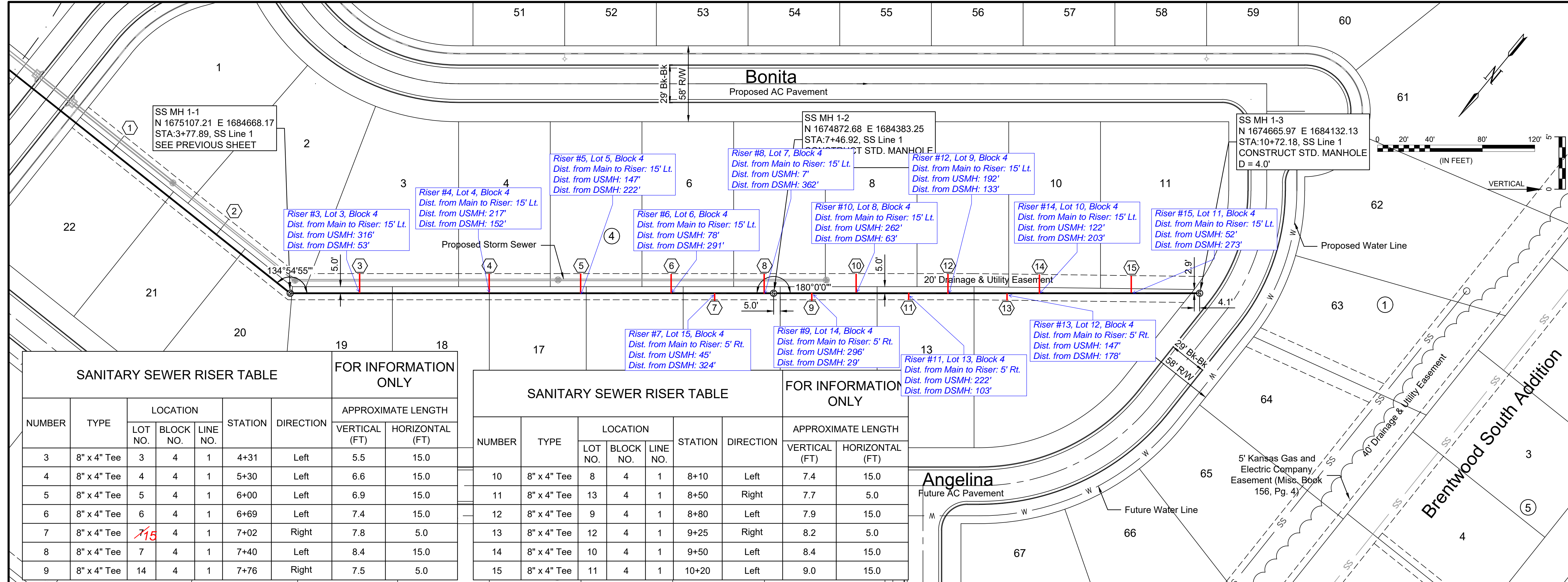
SANITARY SEWER RISER TABLE						FOR INFORMATION ONLY		
NUMBER	TYPE	LOCATION			STATION	DIRECTION	VERTICAL (FT)	HORIZONTAL (FT)
		LOT NO.	BLOCK NO.	LINE NO.				
10	8" x 4" Tee	8	4	1	8+10	Left	7.4	15.0
11	8" x 4" Tee	13	4	1	8+50	Right	7.7	5.0
12	8" x 4" Tee	9	4	1	8+80	Left	7.9	15.0
13	8" x 4" Tee	12	4	1	9+25	Right	8.2	5.0
14	8" x 4" Tee	10	4	1	9+50	Left	8.4	15.0
15	8" x 4" Tee	11	4	1	10+20	Left	9.0	15.0



SEE REVISED SHEET

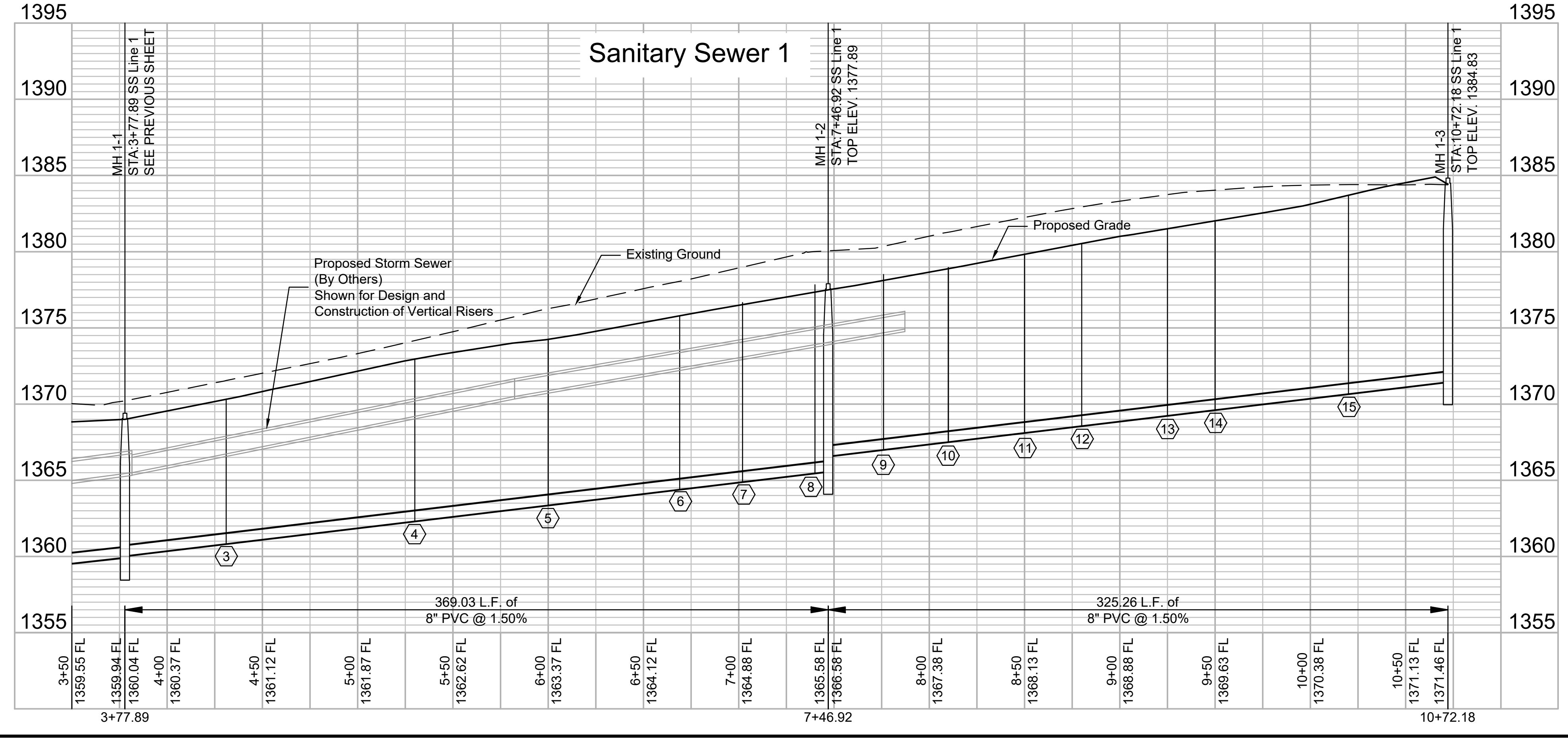
File: L:\2020\20T41009 - Cedar Creek Phase 2\Drawings\C3D\Sanitary Sewer\SS Line 1 (2).dwg Last Save: 9/8/2021 3:12 PM Last saved by: MCarraraPiehler
 Last plotted by: Carrera-Piehler, Mairala Plot Style: --- Plot Scale: 1:2,584.9 Plot Date: 9/8/2021 3:52 PM Plotter used: None

REV.	DATE	DESCRIPTION
1	9/28/21	ADDENDUM #1



SANITARY SEWER RISER TABLE						FOR INFORMATION ONLY		
NUMBER	TYPE	LOCATION			STATION	DIRECTION	APPROXIMATE LENGTH	
		LOT NO.	BLOCK NO.	LINE NO.			VERTICAL (FT)	HORIZONTAL (FT)
3	8" x 4" Tee	3	4	1	4+31	Left	5.5	15.0
4	8" x 4" Tee	4	4	1	5+30	Left	6.6	15.0
5	8" x 4" Tee	5	4	1	6+00	Left	6.9	15.0
6	8" x 4" Tee	6	4	1	6+69	Left	7.4	15.0
7	8" x 4" Tee	15	4	1	7+02	Right	7.8	5.0
8	8" x 4" Tee	7	4	1	7+40	Left	8.4	15.0
9	8" x 4" Tee	14	4	1	7+76	Right	7.5	5.0

SANITARY SEWER RISER TABLE						FOR INFORMATION ONLY		
NUMBER	TYPE	LOCATION			STATION	DIRECTION	APPROXIMATE LENGTH	
		LOT NO.	BLOCK NO.	LINE NO.			VERTICAL (FT)	HORIZONTAL (FT)
10	8" x 4" Tee	8	4	1	8+10	Left	7.4	15.0
11	8" x 4" Tee	13	4	1	8+50	Right	7.7	5.0
12	8" x 4" Tee	9	4	1	8+80	Left	7.9	15.0
13	8" x 4" Tee	12	4	1	9+25	Right	8.2	5.0
14	8" x 4" Tee	10	4	1	9+50	Left	8.4	15.0
15	8" x 4" Tee	11	4	1	10+20	Left	9.0	15.0



File: L:\2020\20T41009 - Cedar Creek Phase 2\Drawings\C3D\Sanitary Sewer\SS Line 1 (2).dwg Last Save: 9/28/2021 1:11 PM Last saved by: CDJurey
Last plotted by: Jurey, Caleb D. Plot Style: --- Plot Scale: 1:2.5849 Plot Date: 9/28/2021 1:13 PM Plotter Used: None



© 2021 GARVER, LLC
 THIS DOCUMENT, ALONG WITH THE IDEAS AND DESIGNS CONVEYED HEREIN, SHALL BE CONSIDERED INSTRUMENTS OF PROFESSIONAL SERVICE AND ARE PROPERTY OF GARVER, LLC. ANY USE, REPRODUCTION, OR DISTRIBUTION OF THIS DOCUMENT, ALONG WITH THE IDEAS AND DESIGN CONTAINED HEREIN, IS PROHIBITED UNLESS AUTHORIZED IN WRITING BY GARVER, LLC OR EXPLICITLY ALLOWED IN THE GOVERNING PROFESSIONAL SERVICES AGREEMENT FOR THIS WORK.

8535 E. 21st Street N.
 Suite 130
 Wichita, KS 67206
 (316) 264-8008



BY	DESCRIPTION	DATE	REV.



CITY OF WICHITA
 WICHITA, KANSAS
 CEDAR CREEK ADD,
 PHASE 2 - SANITARY

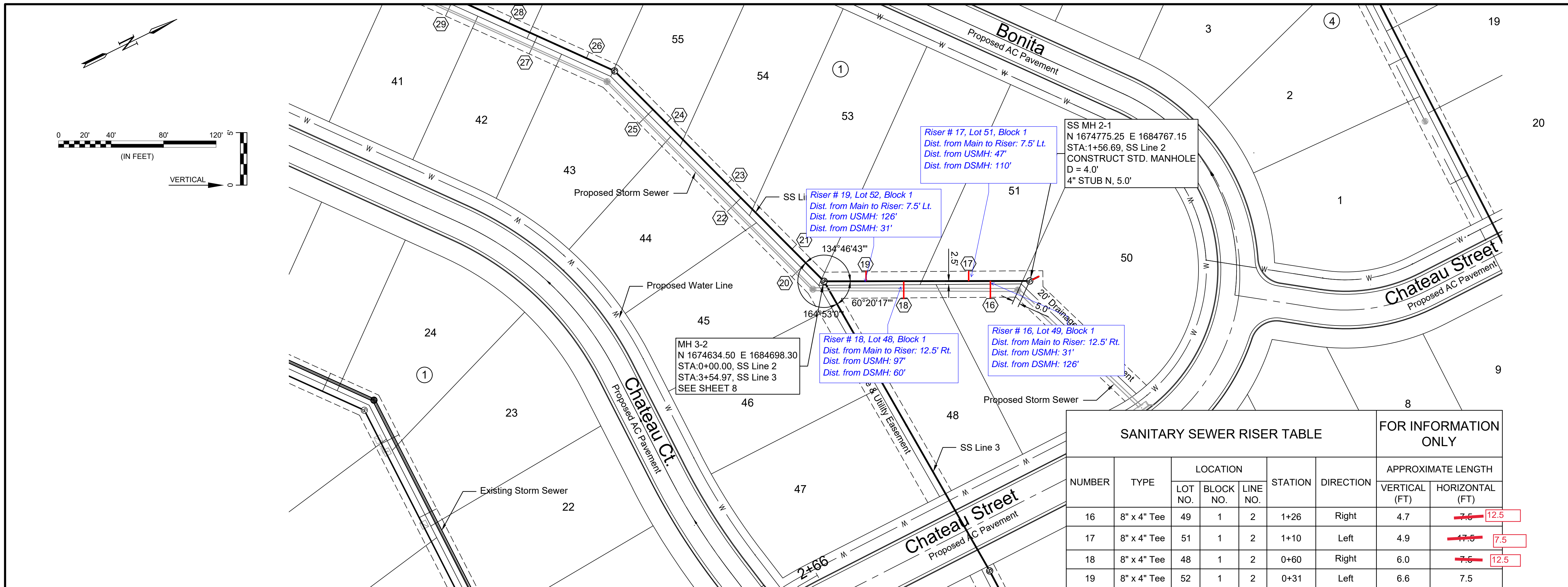
SS Line 2

JOB NO.: 20T41009
 DATE: SEPT 2021
 DESIGNED BY: CMB
 DRAWN BY: MCP

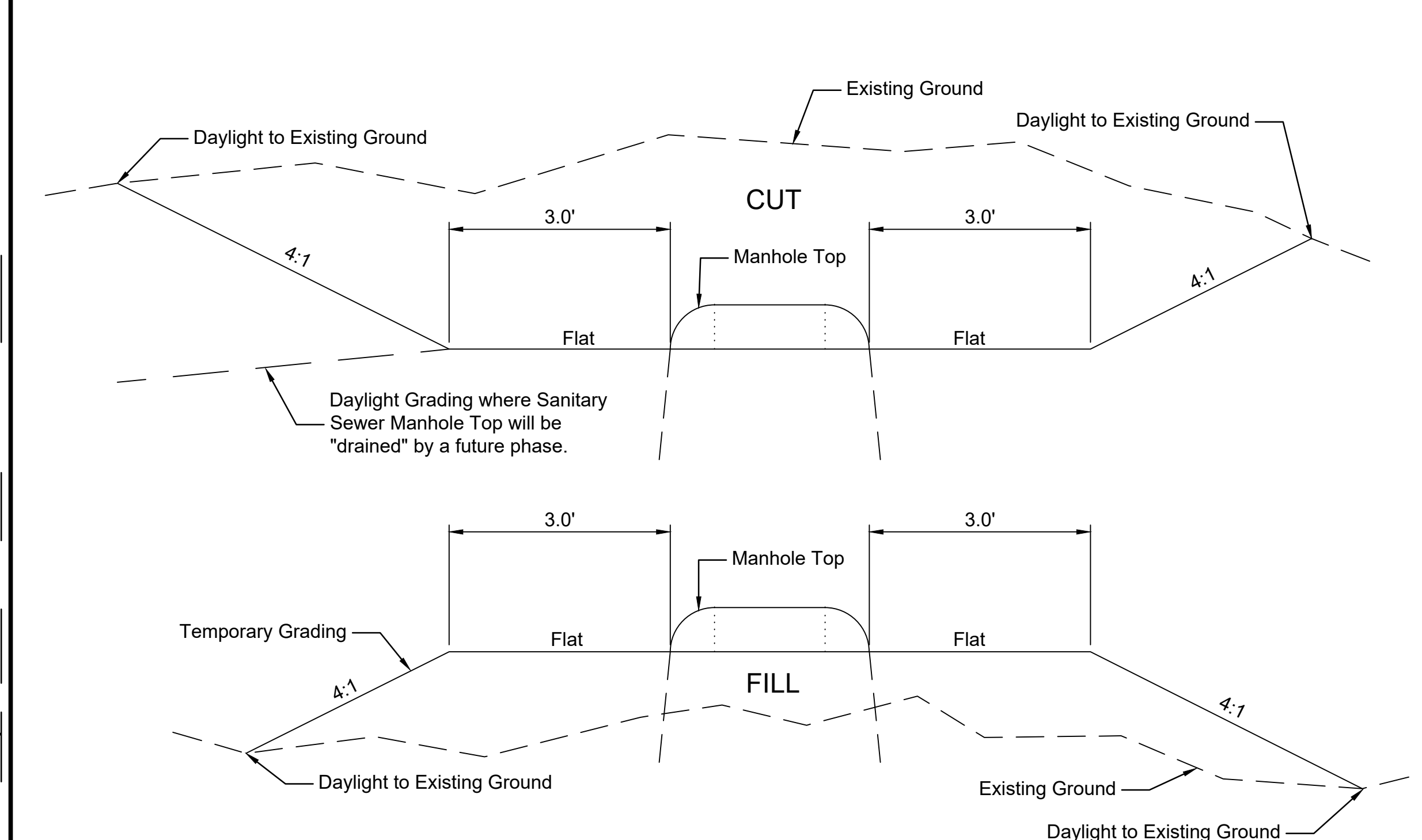
BAR IS ONE INCH ON ORIGINAL DRAWING
 IF NOT ONE INCH ON THIS SHEET, ADJUST SCALES ACCORDINGLY.

DRAWING NUMBER

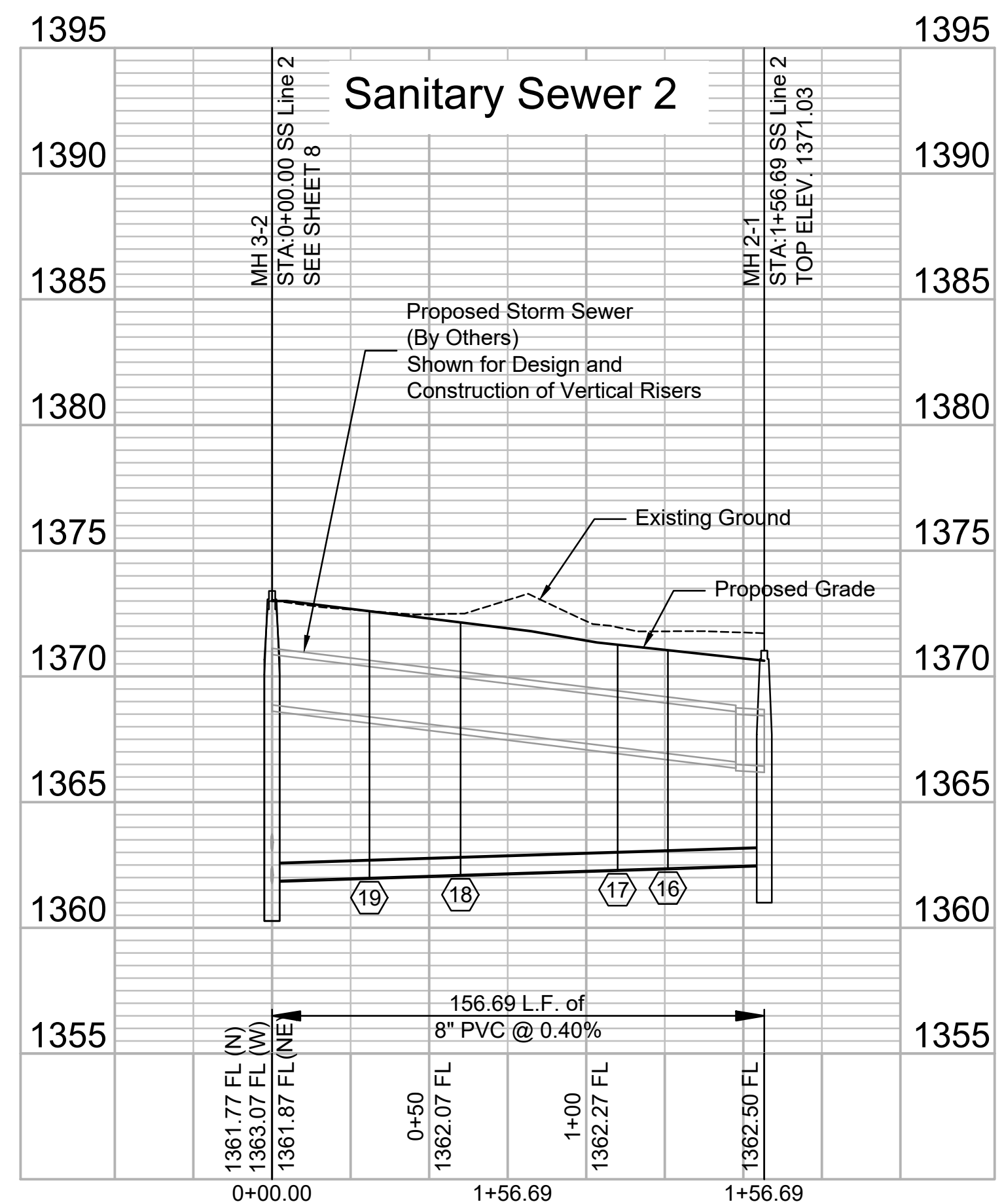
SHEET NUMBER **7** OF **18**



SANITARY SEWER RISER TABLE							FOR INFORMATION ONLY	
NUMBER	TYPE	LOCATION			STATION	DIRECTION	APPROXIMATE LENGTH	
		LOT NO.	BLOCK NO.	LINE NO.			VERTICAL (FT)	HORIZONTAL (FT)
16	8" x 4" Tee	49	1	2	1+26	Right	4.7	7.5 12.5
17	8" x 4" Tee	51	1	2	1+10	Left	4.9	17.5 7.5
18	8" x 4" Tee	48	1	2	0+60	Right	6.0	7.5 12.5
19	8" x 4" Tee	52	1	2	0+31	Left	6.6	7.5

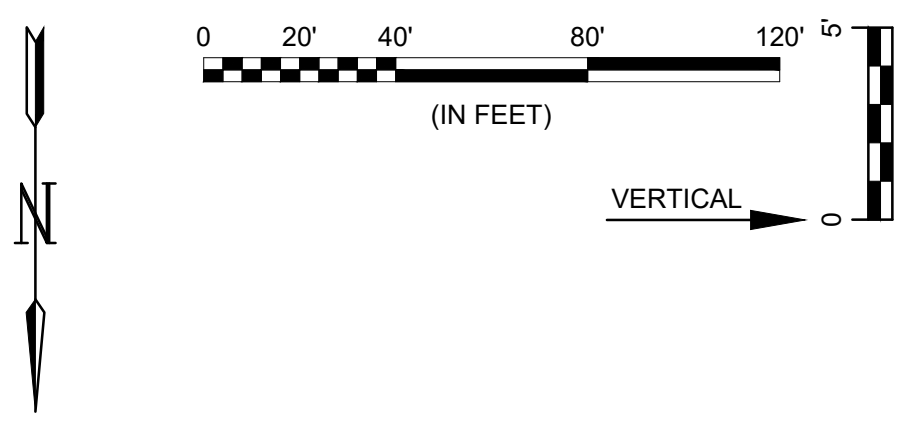
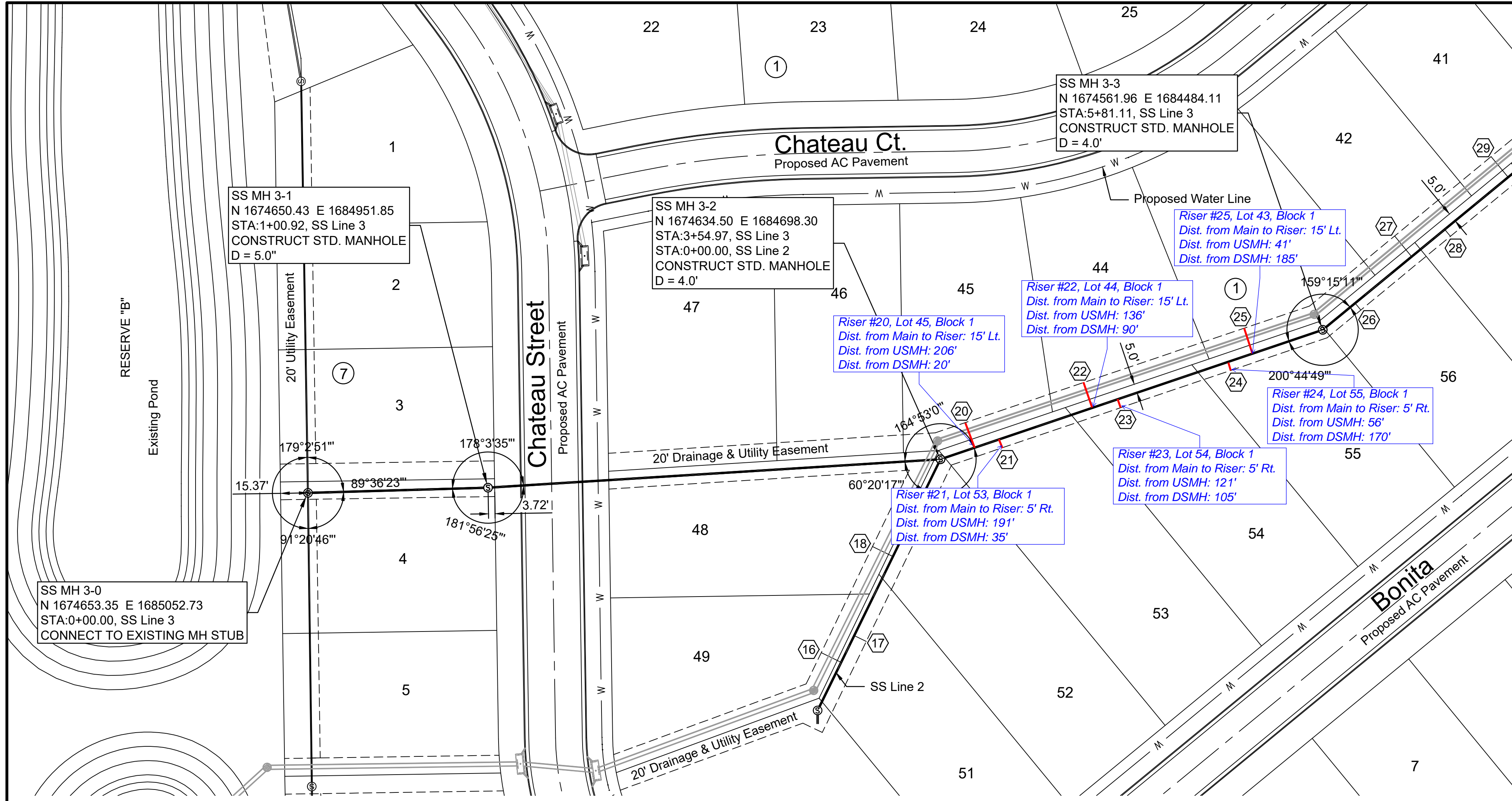


TYPICAL SECTION FOR TEMPORARY GRADING AROUND MANHOLES
 Not to Scale



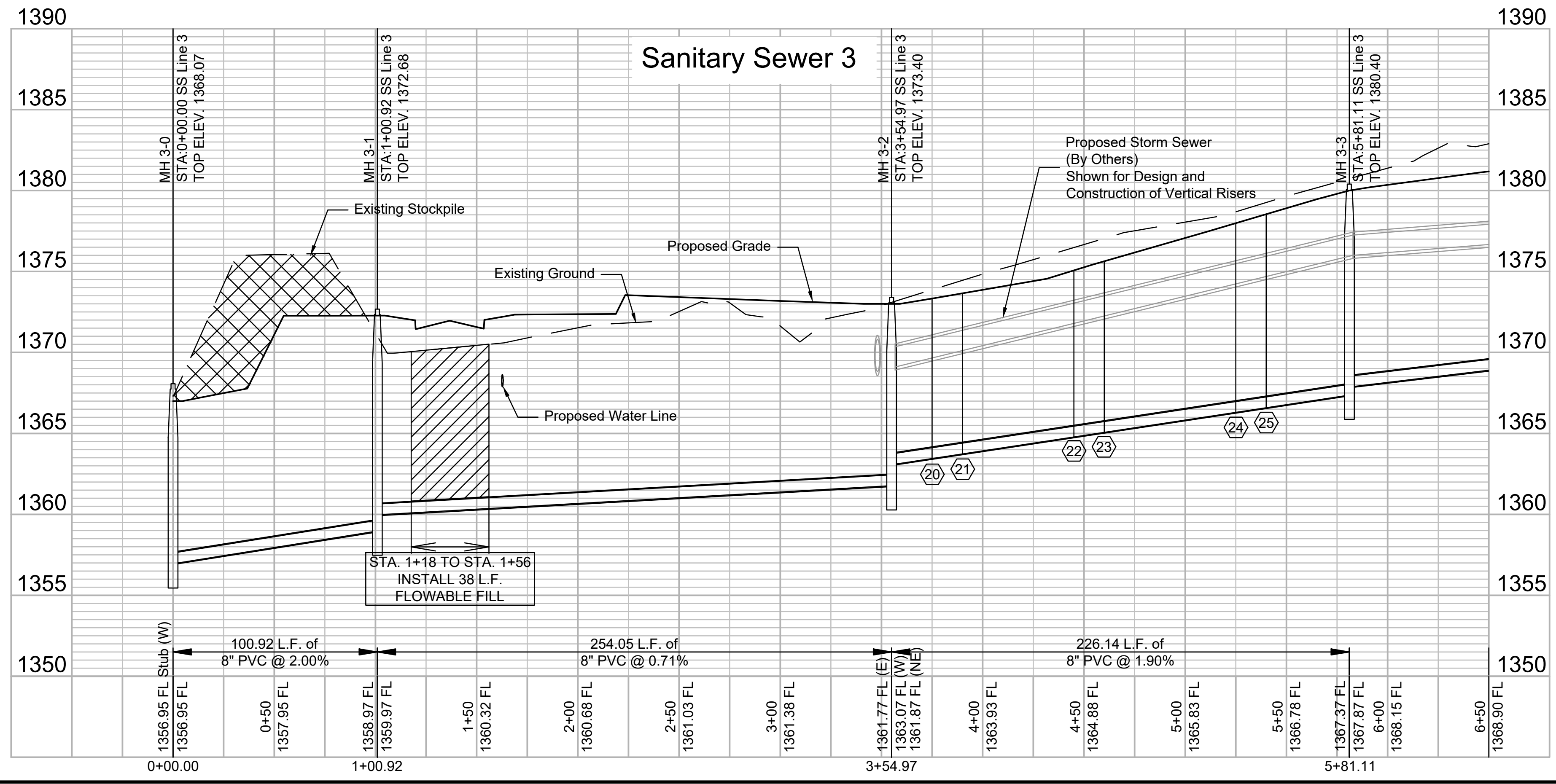
File: L:\2020\20T41009 - Cedar Creek Phase 2\Drawings\C3D\Sanitary Sewer\SS Line 2.dwg, Last Save: 9/8/2021 3:49 PM, Last saved by: MCarreraPiedra
 Last plotted by: Carrera-Piedra, Mairala Plot Style: --- Plot Scale: 1:2,584.9 Plot Date: 9/8/2021 3:52 PM Plotter used: None

Note:
 The cost for Temporary Grading around Manholes is subsidiary to the bid item "MH, Standard SS (4")"



SANITARY SEWER RISER TABLE							FOR INFORMATION ONLY	
NUMBER	TYPE	LOCATION			STATION	DIRECTION	APPROXIMATE LENGTH	
		LOT NO.	BLOCK NO.	LINE NO.			VERTICAL (FT)	HORIZONTAL (FT)
20	8" x 4" Tee	45	1	3	3+75	Left	5.9	15.0
21	8" x 4" Tee	53	1	3	3+90	Right	5.9	5.0
22	8" x 4" Tee	44	1	3	4+45	Left	6.3	15.0
23	8" x 4" Tee	54	1	3	4+60	Right	6.5	5.0
24	8" x 4" Tee	55	1	3	5+25	Right	7.6	5.0
25	8" x 4" Tee	43	1	3	5+40	Left	7.9	15.0

Contractor shall excavate a corridor through the existing earthwork stockpile only as necessary to install sanitary sewer line. Spoils will remain on site. Bid as the item "Stockpile excavation - 1 lump sum".



File: L:\2020\20141009 - Cedar Creek Phase 2\Drawings\C3D\Sanitary Sewer\SS Line 3.dwg, Last Save: 9/8/2021 3:19 PM, Last saved by: MCarreneraPiedra, Last plotted by: Carrenera-Piedra, Mainfile Plot Style: ---, Plot Scale: 1:2,584.9 Plot Date: 9/8/2021 3:53 PM, Plotter used: None

GARVER
© 2021 GARVER, LLC
THIS DOCUMENT, ALONG WITH THE IDEAS AND DESIGNS CONVEYED HEREIN, SHALL BE CONSIDERED INSTRUMENTS OF PROFESSIONAL SERVICE AND ARE PROPERTY OF GARVER, LLC. ANY USE, REPRODUCTION, OR DISTRIBUTION OF THIS DOCUMENT, ALONG WITH THE IDEAS AND DESIGNS CONTAINED HEREIN, IS PROHIBITED UNLESS AUTHORIZED IN WRITING BY GARVER, LLC OR EXPLICITLY ALLOWED IN THE GOVERNING PROFESSIONAL SERVICES AGREEMENT FOR THIS WORK.

8535 E. 21st Street N.
Suite 130
Wichita, KS 67206
(316) 264-8008



BY	DATE	DESCRIPTION

CITY OF WICHITA
WICHITA, KANSAS

CEDAR CREEK ADD., PHASE 2 - SANITARY

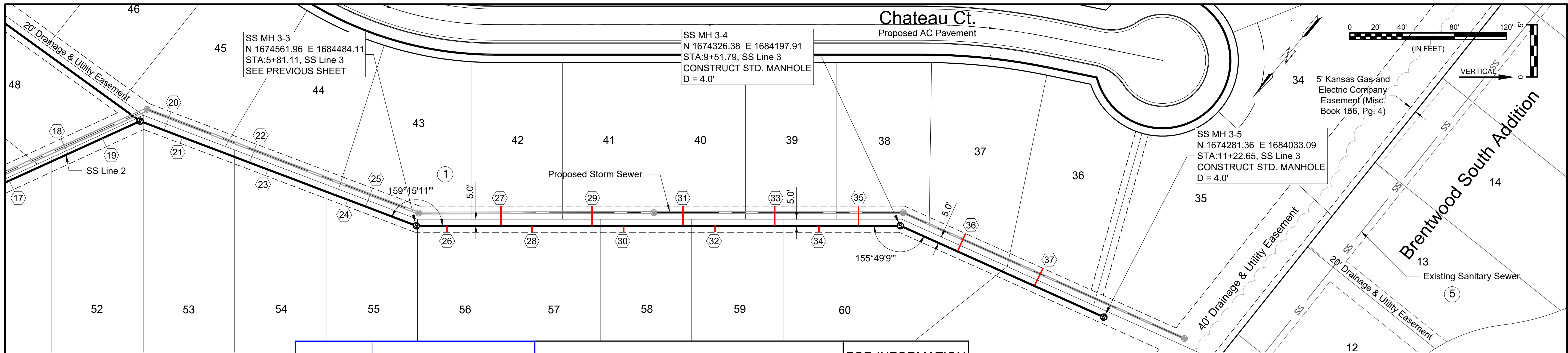
SS Line 3

JOB NO.: 20T41009
DATE: SEPT 2021
DESIGNED BY: CMB
DRAWN BY: MCP

BAR IS ONE INCH ON ORIGINAL DRAWING
IF NOT ONE INCH ON THIS SHEET, ADJUST SCALES ACCORDINGLY.

DRAWING NUMBER

SHEET NUMBER **8** OF **18**



GARVER

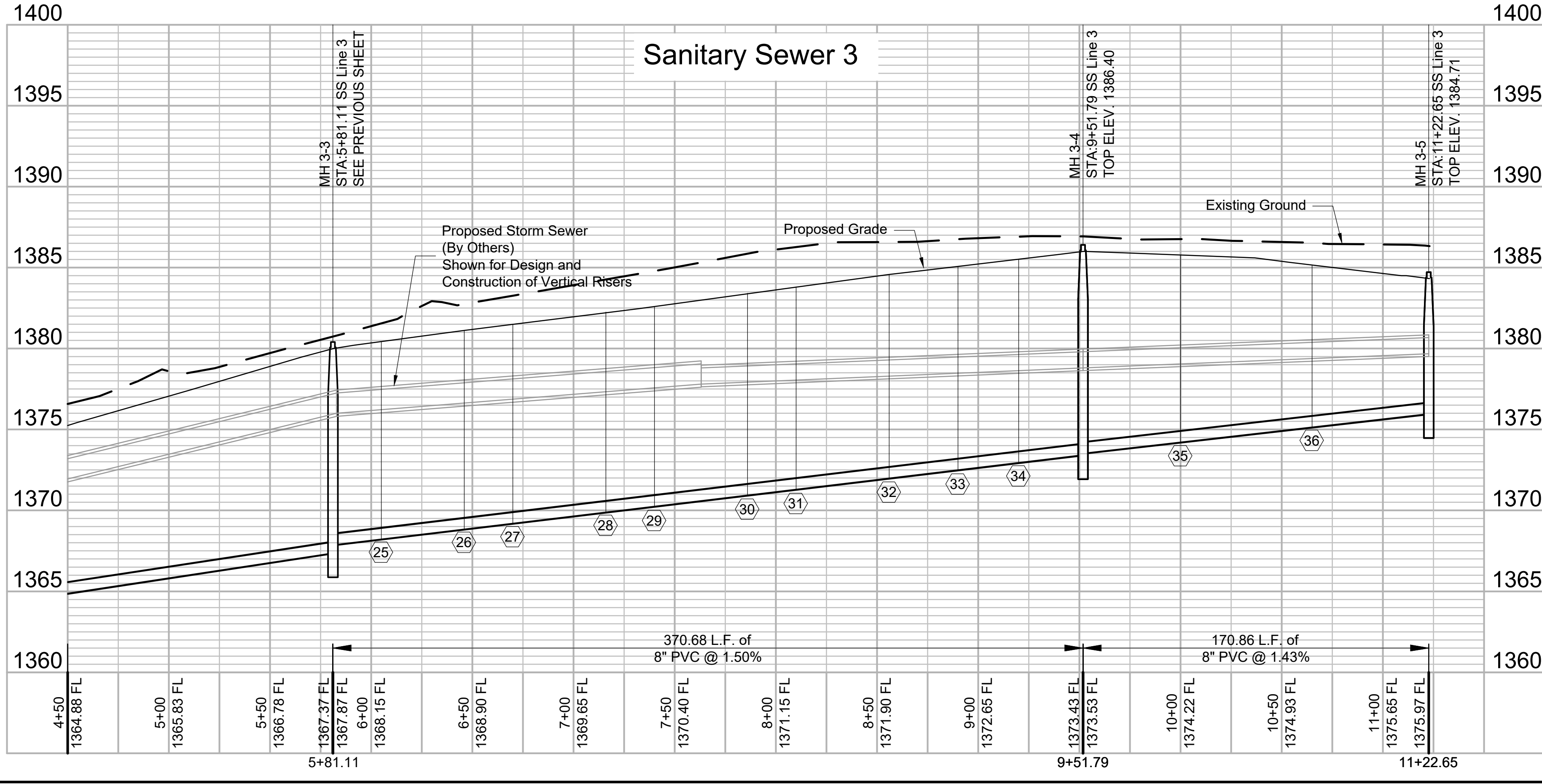
© 2021 GARVER, LLC
 THIS DOCUMENT, ALONG WITH THE IDEAS AND DESIGNS CONVEYED HEREIN, SHALL BE CONSIDERED INSTRUMENTS OF PROFESSIONAL SERVICE AND ARE PROPERTY OF GARVER, LLC. ANY USE, REPRODUCTION, OR DISTRIBUTION OF THIS DOCUMENT, ALONG WITH THE IDEAS AND DESIGN CONTAINED HEREIN, IS PROHIBITED UNLESS AUTHORIZED IN WRITING BY GARVER, LLC OR EXPLICITLY ALLOWED IN THE GOVERNING PROFESSIONAL SERVICES AGREEMENT FOR THIS WORK.

8535 E. 21st Street N.
 Suite 130
 Wichita, KS 67206
 (316) 264-8008

[Signature]
 CHRISTOPHER M. HARRIS, P.E.
 LICENSED PROFESSIONAL ENGINEER
 1631
 9-10-21
 KANSAS

Distance from Main to Riser (Lt./Rt.)	DISTANCE FROM		SANITARY SEWER RISER TABLE							FOR INFORMATION ONLY	
	UPSTREAM MH	DOWNSTREAM MH	NUMBER	TYPE	LOCATION			STATION	DIRECTION	APPROXIMATE LENGTH	
					LOT NO.	BLOCK NO.	LINE NO.			VERTICAL (FT)	HORIZONTAL (FT)
5' Rt.	347'	24'	26	8" x 4" Tee	56	1	3	6+05	Right	8.2	5.0
15' Lt.	306'	65'	27	8" x 4" Tee	42	1	3	6+46	Left	8.3	15.0
5' Rt.	282'	89'	28	8" x 4" Tee	57	1	3	6+70	Right	8.3	5.0
15' Lt.	236'	135'	29	8" x 4" Tee	41	1	3	7+16	Left	8.4	15.0
5' Rt.	212'	159'	30	8" x 4" Tee	58	1	3	7+40	Right	8.3	5.0
15' Lt.	166'	205'	31	8" x 4" Tee	40	1	3	7+86	Left	8.5	15.0
5' Rt.	142'	229'	32	8" x 4" Tee	59	1	3	8+10	Right	8.5	5.0

SANITARY SEWER RISER TABLE							FOR INFORMATION ONLY		Distance from Main to Riser (Lt./Rt.)	DISTANCE FROM	
NUMBER	TYPE	LOCATION			STATION	DIRECTION	APPROXIMATE LENGTH			UPSTREAM MH	DOWNSTREAM MH
		LOT NO.	BLOCK NO.	LINE NO.			VERTICAL (FT)	HORIZONTAL (FT)			
33	8" x 4" Tee	39	1	3	8+56	Left	8.6	15.0	15' Lt.	96'	275'
34	8" x 4" Tee	60	1	3	8+90	Right	8.6	5.0	5' Rt.	62'	309'
35	8" x 4" Tee	38	1	3	9+20	Left	8.6	15.0	15' Lt.	32'	339'
36	8" x 4" Tee	37	1	3	10+00	Left	7.6	15.0	15' Lt.	123'	48'
37	8" x 4" Tee	36	1	3	10+65	Left	6.0	15.0	15' Lt.	58'	113'



File: L:\2020\20T41009 - Cedar Creek Phase 2\Drawings\C3D\Sanitary Sewer\SS Line 3 (2).dwg, Last Save: 9/8/2021 1:01 PM, Last saved by: MCarrera\Piedra
 Last plotted by: Carrera-Piedra, Mainfile Plot Style: ---, Plot Scale: 1:2,584.9 Plot Date: 9/8/2021 3:53 PM, Plotter used: None

DATE	
REV.	

CITY OF WICHITA
 WICHITA, KANSAS

**CEDAR CREEK ADD.,
 PHASE 2 - SANITARY**

SS Line 3 (2)

JOB NO.: 20T41009
 DATE: SEPT 2021
 DESIGNED BY: CMB
 DRAWN BY: MCP

BAR IS ONE INCH ON ORIGINAL DRAWING
 0 1" = 100'
 IF NOT ONE INCH ON THIS SHEET, ADJUST SCALES ACCORDINGLY.

DRAWING NUMBER

SHEET NUMBER **9** OF **18**



© 2021 GARVER, LLC
 THIS DOCUMENT, ALONG WITH THE IDEAS AND DESIGNS CONVEYED HEREIN, SHALL BE CONSIDERED INSTRUMENTS OF PROFESSIONAL SERVICE AND ARE PROPERTY OF GARVER, LLC. ANY USE, REPRODUCTION, OR DISTRIBUTION OF THIS DOCUMENT, ALONG WITH THE IDEAS AND DESIGN CONTAINED HEREIN, IS PROHIBITED UNLESS AUTHORIZED IN WRITING BY GARVER, LLC OR EXPLICITLY ALLOWED IN THE GOVERNING PROFESSIONAL SERVICES AGREEMENT FOR THIS WORK.

8535 E. 21st Street N.
 Suite 130
 Wichita, KS 67206
 (316) 264-8008



REV.	DATE	DESCRIPTION



CITY OF WICHITA
 WICHITA, KANSAS
 CEDAR CREEK ADD.,
 PHASE 2 - SANITARY

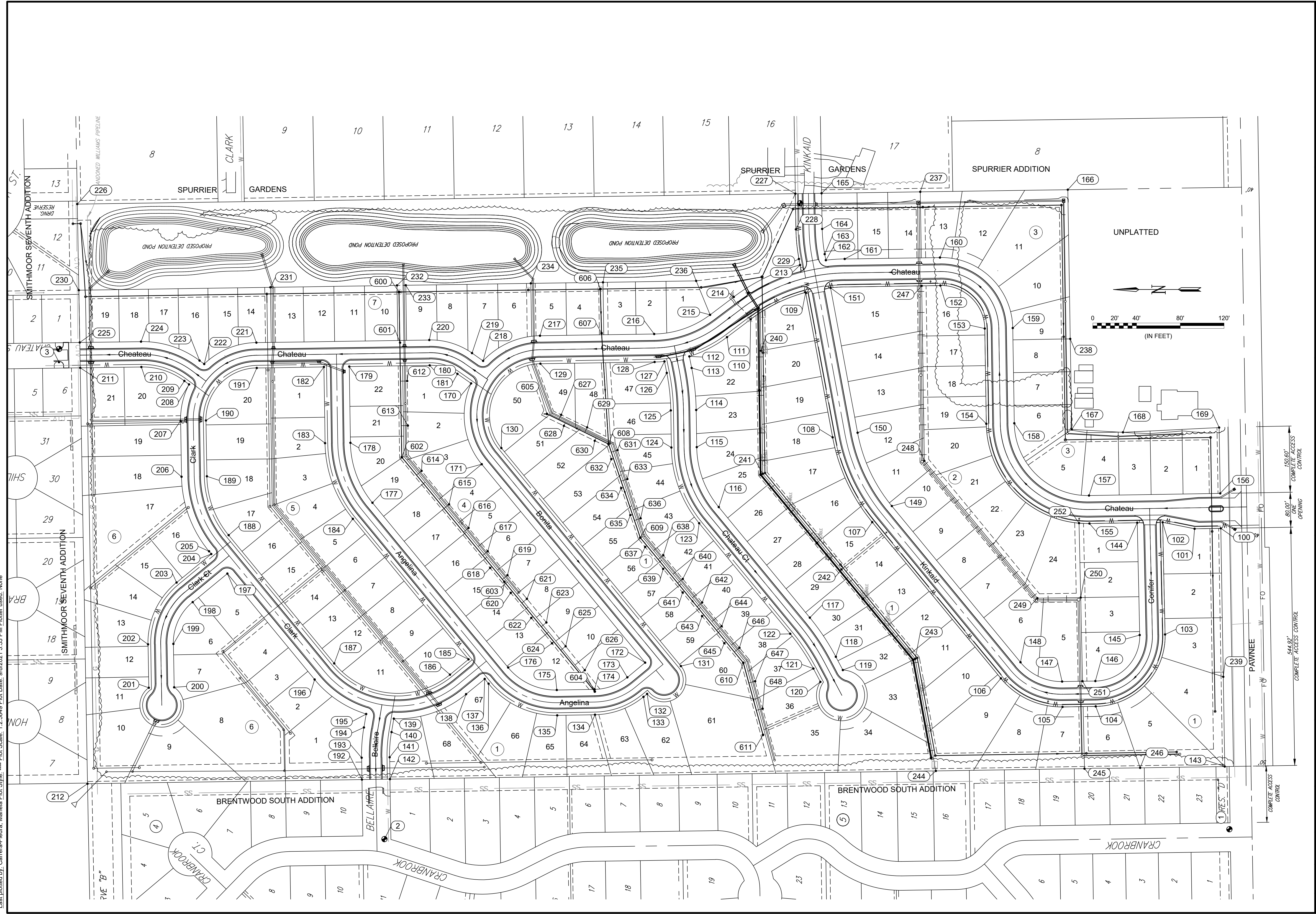
Coordinate Map

JOB NO.: 20T41009
 DATE: SEPT 2021
 DESIGNED BY: CMB
 DRAWN BY: MCP

BAR IS ONE INCH ON ORIGINAL DRAWING
 IF NOT ONE INCH ON THIS SHEET, ADJUST SCALES ACCORDINGLY.

DRAWING NUMBER

SHEET NUMBER **10** OF **18**



File: L:\2020\20T41009 - Cedar Creek Phase 2\Drawings\CSD\Sanitary Sewer\Coordinate Map.dwg, Last Save: 9/8/2021 2:26 PM, Last saved by: MCarraPiedra
 Last plotted by: Carerra-Piedra, Mainfile Plot Style: --- Plot Scale: 1:2,584.9 Plot Date: 9/8/2021 3:53 PM Plotter used: None

