

BENCHMARKS:
 BM #1: Chiseled square on NW corner of catch basin, 262.2' W. & 35.9' N. of S1/4 Cor., Sec. 1, TWP. 27-S., R-2-E. Elev. = 1361.76 NAVD88

BM #2: Chiseled square on NW corner of catch basin, 962.0' W. & 35.8' N. of S1/4 Cor., Sec. 1, TWP. 27-S., R-2-E. Elev. = 1363.84 NAVD88

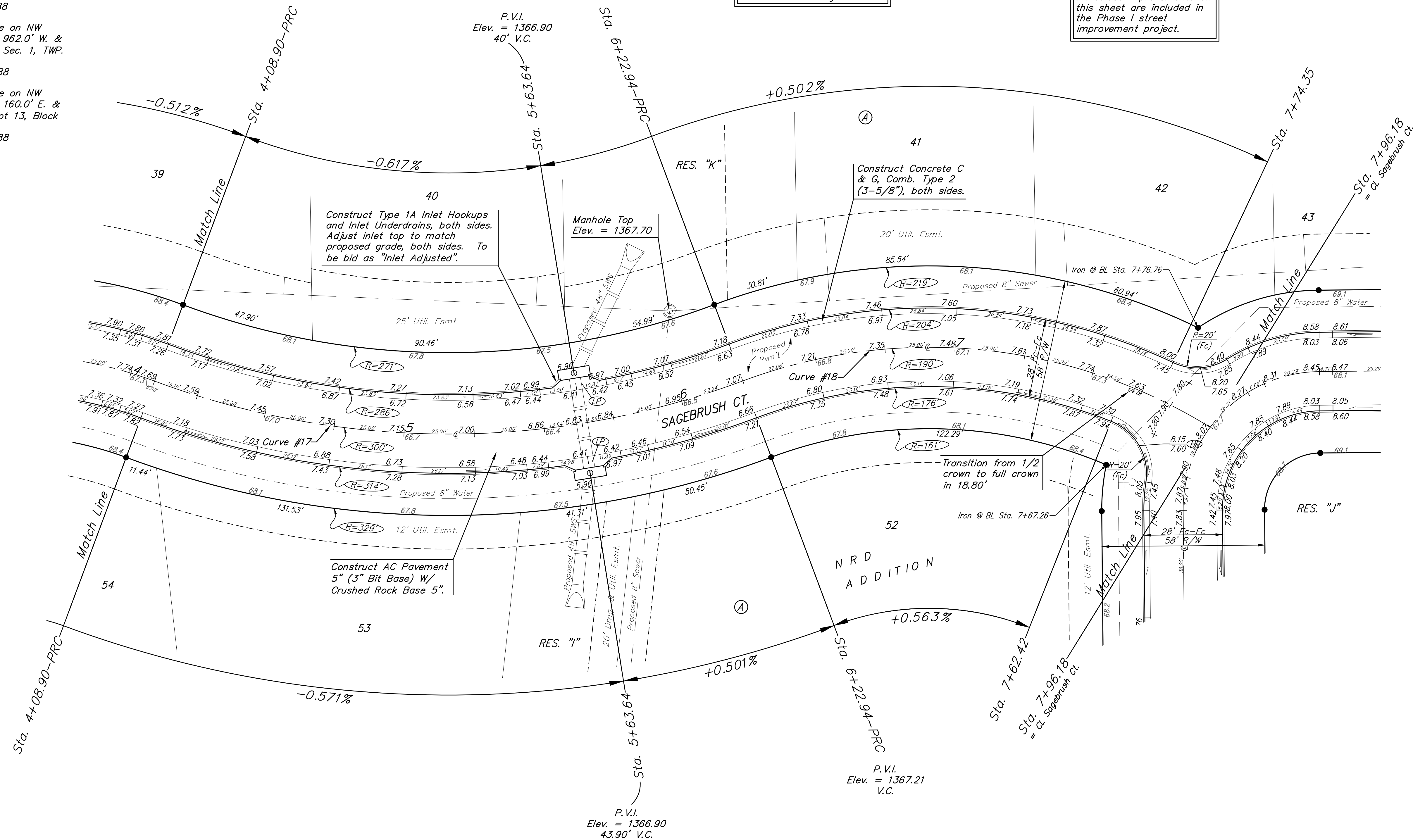
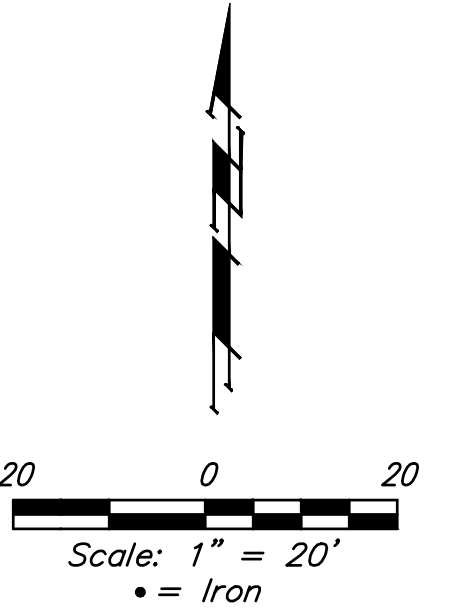
BM #3: Chiseled square on NW corner of catch basin, 160.0' E. & 24.3' S. of SW Cor., Lot 13, Block A, NRD Addition. Elev. = 1369.05 NAVD88

P.V.I.
 Elev. = 1367.81
 No V.C.

P.V.I.
 Elev. = 1366.90
 40' V.C.

Baseline = CL Sagebrush Ct.

All street improvements on this sheet are included in the Phase I street improvement project.



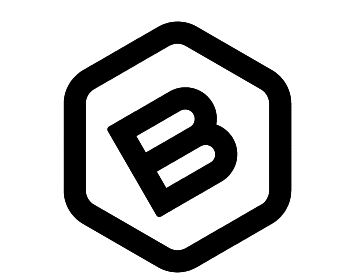
Curve #17
 Curve Data Based on Centerline
 Rad. = 300' Delta = 40°52'41" Tangent = 111.80'
 Arc = 214.04' L.C. = 209.53' Def./Ft. = 5.72950 Min.

Face	Chord	Arc	8' Left	8' Right	Defl.	Total Defl.
4+08.90	-	-	-	-	0°00'00"	0°00'00"
4+25.00	16.10'	14.92'	17.28'	1°32'15"	1°32'15"	
4+50.00	25.00'	23.16'	26.83'	2°23'14"	3°55'29"	
4+75.00	25.00'	23.16'	26.83'	2°23'14"	6°18'43"	
5+00.00	25.00'	23.16'	26.83'	2°23'14"	8°41'57"	
5+25.00	25.00'	23.16'	26.83'	2°23'15"	11°05'12"	
5+50.00	25.00'	23.16'	26.83'	2°23'14"	13°28'26"	
5+75.00	25.00'	23.16'	26.83'	2°23'14"	15°51'40"	
6+00.00	25.00'	23.16'	26.83'	2°23'14"	18°14'54"	
6+22.94	22.94'	21.25'	24.62'	2°11'26"	20°26'20"	

Curve #18
 Curve Data Based on Centerline
 Rad. = 190' Delta = 52°14'28" Tangent = 93.16'
 Arc = 173.24' L.C. = 167.30' Def./Ft. = 9.04660 Min.

Face	Chord	Arc	8' Left	8' Right	Defl.	Total Defl.
6+22.94	-	-	-	-	0°00'00"	0°00'00"
6+25.00	2.06'	2.30'	1.82'	0°18'38"	0°18'38"	
6+50.00	25.00'	27.87'	22.09'	3°46'10"	4°04'48"	
6+75.00	25.00'	27.87'	22.09'	3°46'10"	7°50'58"	
7+00.00	25.00'	27.87'	22.09'	3°46'10"	11°37'08"	
7+25.00	25.00'	27.87'	22.09'	3°46'10"	15°23'18"	
7+50.00	25.00'	27.87'	22.09'	3°46'10"	19°09'28"	
7+62.42	12.42'	13.86'	10.98'	1°52'21"	21°01'49"	
7+74.35	11.93'	13.31'	10.55'	1°47'56"	22°49'45"	
7+96.18	21.83'	24.34'	19.29'	3°17'29"	26°07'14"	

NOTE: ROLL TYPE CURB & GUTTER (TYPE 2) TO BE CONSTRUCTED ON THE PAVEMENT SHOWN ON THIS SHEET. TOP OF CURB ELEVATIONS ARE GIVEN FOR FULL HEIGHT CURB (TYPE 4).



BAUGHMAN COMPANY
 315 Ellis St.
 Wichita, KS 67211
 316-262-7271
 BaughmanCo.com

NRD ADDITION
 Phase I & Entrance

SAGEBRUSH CT.

STREET IMPROVEMENTS

PROJECT NUMBER:

21-03-E868 & E869

DESIGN: NBW DRAWN: TMS

DATE: December 6, 2021

SHEET OF

12 47

File: E:\Projects\NRD Addition_19-04-P448\Engineering\Phase I\STR 21-03-E868 E869\STR.dwg