

BENCHMARKS:
 BM #1: Chiseled square on NW corner of catch basin, 262.2' W. & 35.9' N. of S1/4 Cor., Sec. 1, TWP. 27-S., R-2-E.
 Elev. = 1361.76 NAVD88

BM #2: Chiseled square on NW corner of catch basin, 962.0' W. & 35.8' N. of S1/4 Cor., Sec. 1, TWP. 27-S., R-2-E.
 Elev. = 1363.84 NAVD88

BM #3: Chiseled square on NW corner of catch basin, 160.0' E. & 24.3' S. of SW Cor., Lot 13, Block A, NRD Addition.
 Elev. = 1369.05 NAVD88

WATER VALVE LOCATION TABLE

VALVE NUMBER	STREET	BASELINE STATION	OFFSET DISTANCE	OFFSET DIRECTION
V16	Camden Chase	0+17.00	21'	Lt.
V17	Camden Chase	0+05.00	21'	Lt.

Paving contractor will be responsible to operate all water valves on the project, in the presence of the inspector, to ensure accessibility to the valves, and that all valves (except blowoffs) are left in the "ON" position when the project is completed.

Baseline = CL Camden Chase

All street improvements on this sheet are included in the Phase I street improvement project.

Curve #19
 Curve Data Based on Centerline
 Rad. = 49' Delta = 90°00'00" Tangent = 49.00'
 Arc = 76.97' L.C. = 69.30' Def./Ft. = 35.07860 Min.

Station	Arc	8' Left	8' Right	Defl.	Total Defl.
5+88.20	-	-	-	0°00'00"	0°00'00"
5+96.17	7.97'	11.54'	4.39'	4°39'35"	4°39'35"
6+00.00	3.83'	5.55'	2.11'	2°14'21"	6°53'56"
0+00.00	19.88'	28.61'	10.88'	11°37'21"	18°31'17"
0+18.31	18.31'	26.38'	10.03'	10°42'18"	29°13'35"
0+25.00	6.69'	9.69'	3.68'	3°54'40"	33°08'15"
0+45.29	20.29'	29.19'	11.10'	11°51'45"	45°00'00"

Curve #20
 Curve Data Based on Centerline
 Rad. = 49' Delta = 90°00'00" Tangent = 49.00'
 Arc = 76.97' L.C. = 69.30' Def./Ft. = 35.07860 Min.

Station	Arc	8' Left	8' Right	Defl.	Total Defl.
0+79.29	-	-	-	0°00'00"	0°00'00"
1+00.00	20.71'	29.79'	11.33'	12°06'29"	12°06'29"
1+25.00	25.00'	35.83'	13.63'	14°36'58"	26°43'27"
1+50.00	25.00'	35.83'	13.63'	14°36'57"	41°20'24"
1+56.26	6.26'	9.06'	3.45'	3°39'36"	45°00'00"

Curve #21
 Curve Data Based on Centerline
 Rad. = 49' Delta = 90°00'00" Tangent = 49.00'
 Arc = 76.97' L.C. = 69.30' Def./Ft. = 35.07860 Min.

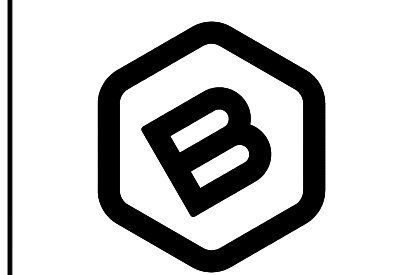
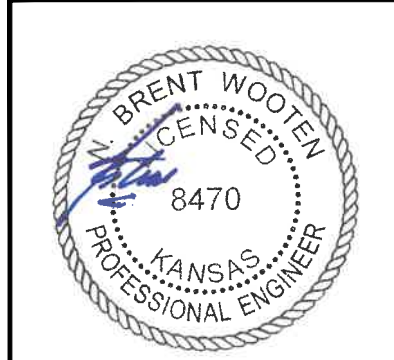
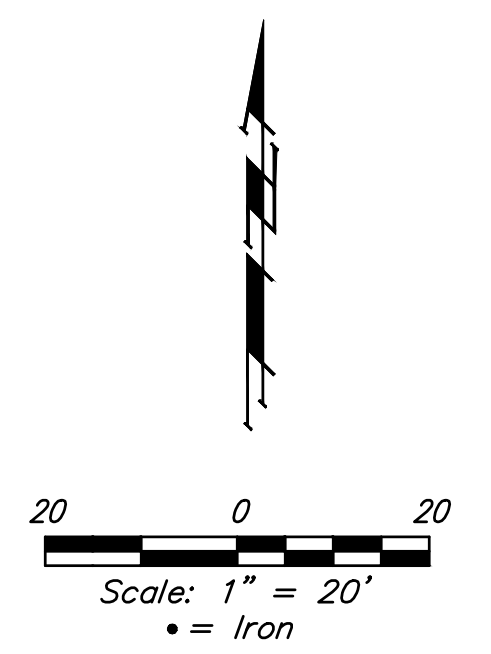
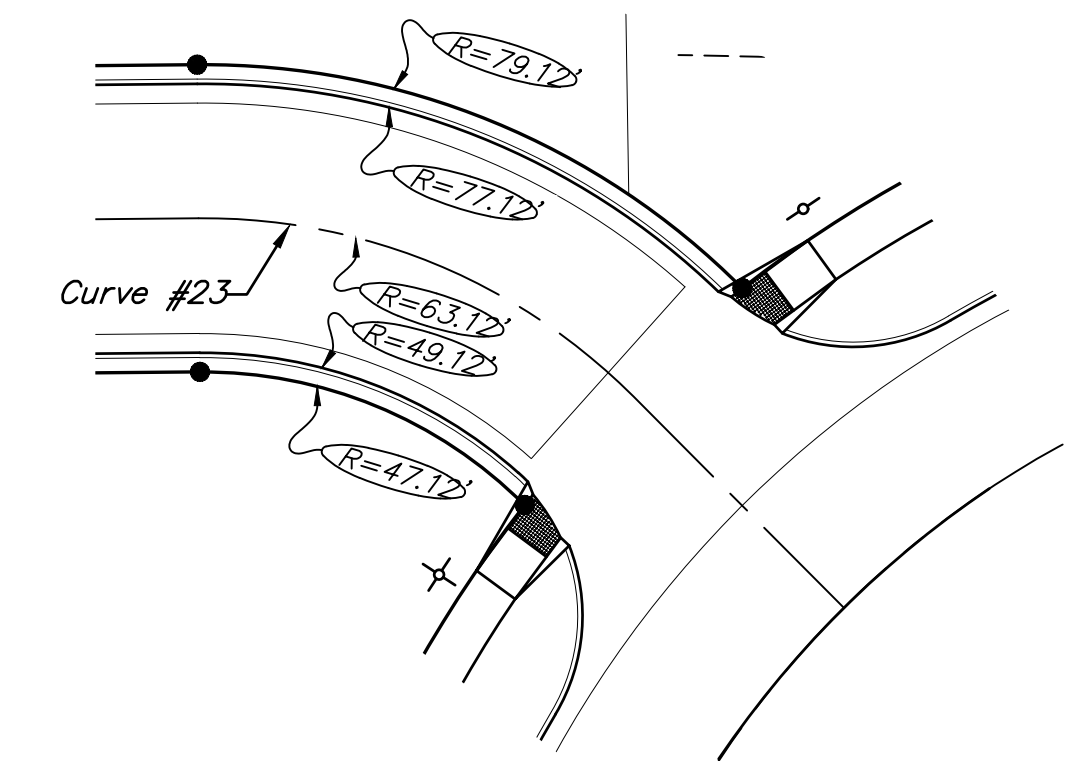
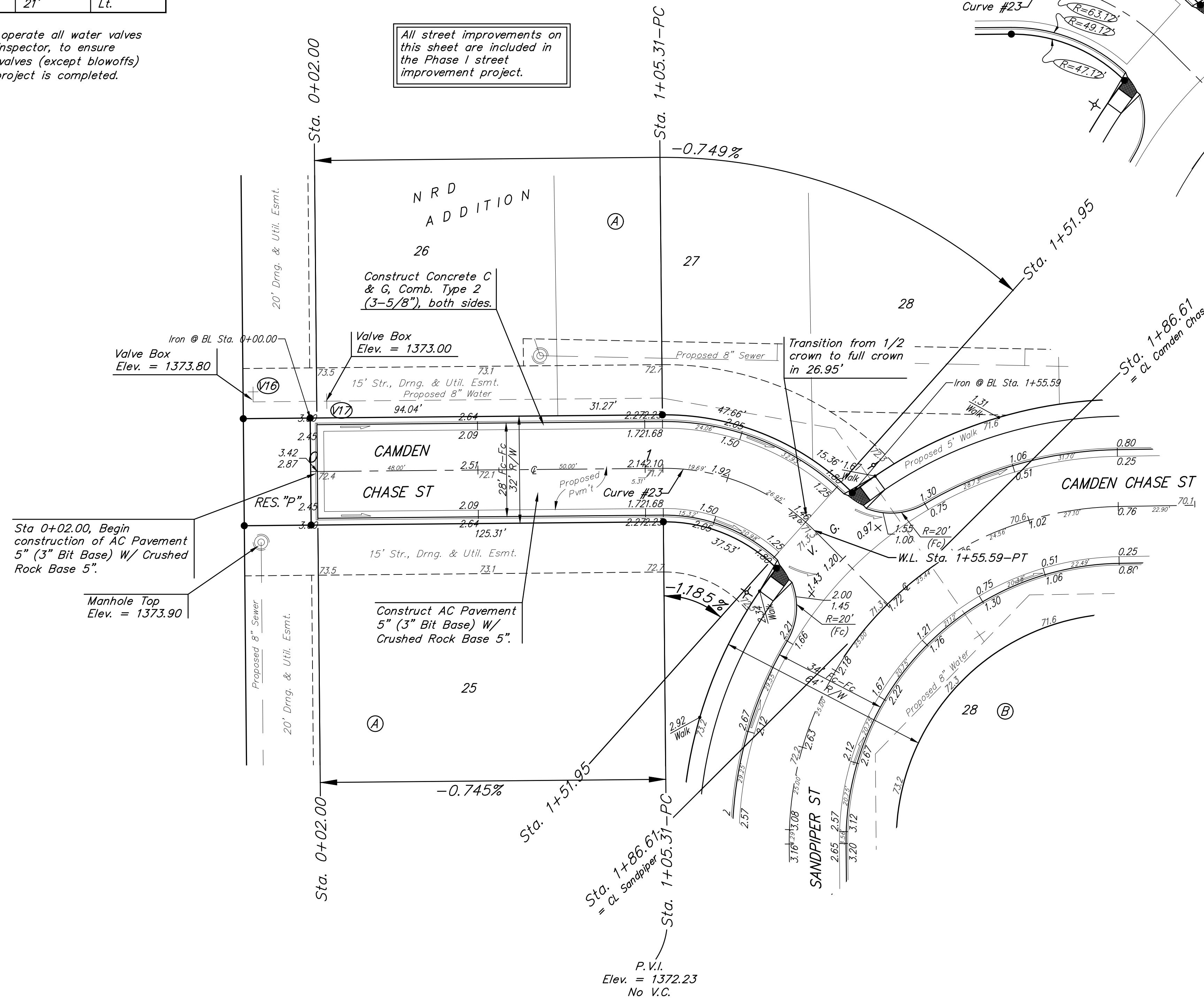
Station	Arc	8' Left	8' Right	Defl.	Total Defl.
2+78.26	-	-	-	0°00'00"	0°00'00"
3+00.00	21.74'	31.24'	11.88'	12°42'37"	12°42'37"
3+25.00	25.00'	35.83'	13.63'	14°36'57"	27°19'34"
3+50.00	25.00'	35.83'	13.63'	14°36'58"	41°56'32"
3+55.23	5.23'	7.57'	2.88'	3°03'28"	45°00'00"

Curve #22
 Curve Data Based on Centerline
 Rad. = 49' Delta = 90°00'00" Tangent = 49.00'
 Arc = 76.97' L.C. = 69.30' Def./Ft. = 35.07860 Min.

Station	Arc	8' Left	8' Right	Defl.	Total Defl.
3+89.23	-	-	-	0°00'00"	0°00'00"
4+00.00	10.77'	15.57'	5.92'	6°17'48"	6°17'48"
4+25.00	25.00'	35.83'	13.63'	14°36'58"	20°54'46"
4+50.00	25.00'	35.83'	13.63'	14°36'58"	35°31'44"
4+66.20	16.20'	23.37'	8.89'	9°28'16"	45°00'00"

Curve #23
 Curve Data Based on Centerline
 Rad. = 63.12' Delta = 45°38'35" Tangent = 26.56'
 Arc = 50.28' L.C. = 48.96' Def./Ft. = 27.23333 Min.

Station	Arc	8' Left	8' Right	Defl.	Total Defl.
1+05.31	-	-	-	0°00'00"	0°00'00"
1+25.00	19.69'	26.45'	12.78'	8°56'13"	8°56'13"
1+50.00	25.00'	33.50'	16.18'	11°20'50"	20°17'03"
1+51.95	1.95'	2.63'	1.27'	0°53'07"	21°10'10"
1+55.59	3.64'	4.91'	2.37'	1°39'08"	22°49'18"



BAUGHMAN COMPANY
 315 Ellis St.
 Wichita, KS 67211
 316-262-7271
 BaughmanCo.com

NRD ADDITION
 Phase I & Entrance

CAMDEN CHASE

STREET IMPROVEMENTS

PROJECT NUMBER:
 21-03-E868 & E869

DESIGN: NBW DRAWN: TMS
 DATE: December 6, 2021

SHEET OF
14 47

NOTE: ROLL TYPE CURB & GUTTER (TYPE 2) TO BE CONSTRUCTED ON THE PAVEMENT SHOWN ON THIS SHEET. TOP OF CURB ELEVATIONS ARE GIVEN FOR FULL HEIGHT CURB (TYPE 4).

File: E:\Projects\NRD Addition_19-04-P448\Engineering\Phase I\STR 21-03-E868 E869\STR.dwg