

**BENCHMARKS:**  
 BM #1: Chiseled square on NW corner of catch basin, 262.2' W. & 35.9' N. of S1/4 Cor., Sec. 1, TWP. 27-S., R-2-E. Elev. = 1361.76 NAVD88

BM #2: Chiseled square on NW corner of catch basin, 962.0' W. & 35.8' N. of S1/4 Cor., Sec. 1, TWP. 27-S., R-2-E. Elev. = 1363.84 NAVD88

BM #3: Chiseled square on NW corner of catch basin, 160.0' E. & 24.3' S. of SW Cor., Lot 13, Block A, NRD Addition. Elev. = 1369.05 NAVD88

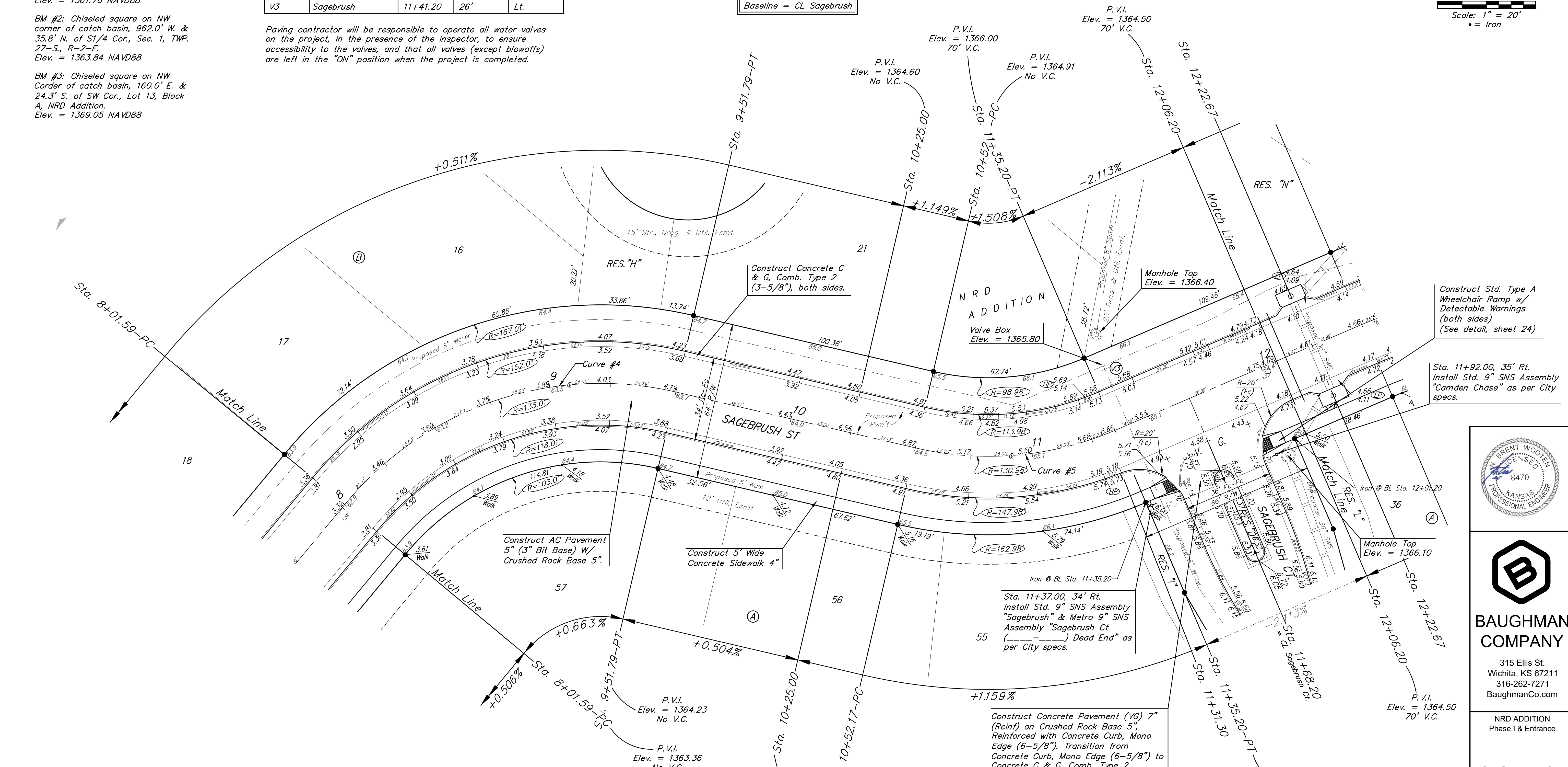
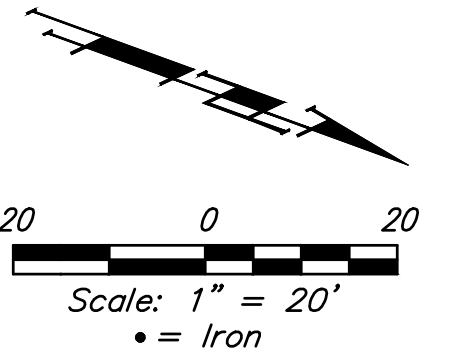
**WATER VALVE LOCATION TABLE**

VALVE NUMBER	STREET	BASELINE STATION	OFFSET DISTANCE	OFFSET DIRECTION
V3	Sagebrush	11+41.20	26'	Lt.

Paving contractor will be responsible to operate all water valves on the project, in the presence of the inspector, to ensure accessibility to the valves, and that all valves (except blowoffs) are left in the "ON" position when the project is completed.

Baseline = CL Sagebrush

All street improvements on this sheet are included in the Phase I street improvement project.



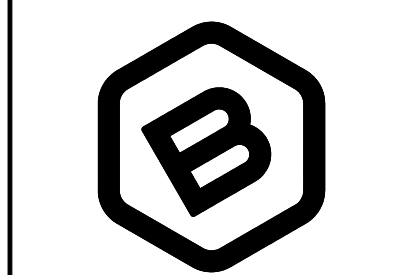
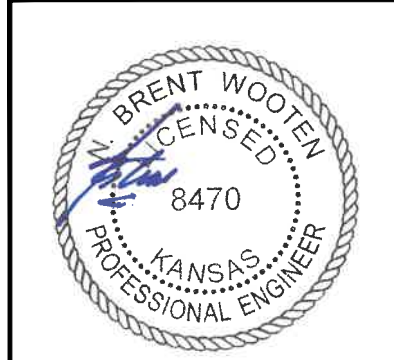
**Curve #4**  
 Curve Data Based on Centerline  
 Rad. = 135.01' Delta = 63°51'25" Tangent = 84.13'  
 Arc = 150.20' L.C. = 142.80' Def./Ft. = 12.75438 Min.

Face Chord Lengths	Station	Arc	8' Left	8' Right	Defl.	Total Defl.
	8+01.59	-	-	-	0°00'00"	0°00'00"
	8+25.00	23.41'	27.76'	19.09'	4°58'35"	4°58'35"
	8+50.00	25.00'	29.64'	20.38'	5°18'51"	10°17'26"
	8+75.00	25.00'	29.64'	20.38'	5°18'52"	15°36'18"
	9+00.00	25.00'	29.64'	20.38'	5°18'52"	20°55'10"
	9+25.00	25.00'	29.64'	20.38'	5°18'51"	26°14'01"
	9+51.79	26.79'	31.76'	21.83'	5°41'41"	31°55'42"

**Curve #5**  
 Curve Data Based on Centerline  
 Rad. = 130.98' Delta = 36°19'11" Tangent = 42.96'  
 Arc = 83.03' L.C. = 81.64' Def./Ft. = 13.12287 Min.

Face Chord Lengths	Station	Arc	8' Left	8' Right	Defl.	Total Defl.
	10+52.17	-	-	-	0°00'00"	0°00'00"
	10+75.00	22.83'	18.45'	27.15'	4°59'36"	4°59'36"
	11+00.00	25.00'	20.20'	29.73'	5°28'04"	10°27'40"
	11+25.00	25.00'	20.20'	29.73'	5°28'04"	15°55'44"
	11+31.30	6.30'	5.10'	7.50'	1°22'41"	17°18'25"
	11+35.20	3.90'	3.16'	4.64'	0°51'11"	18°09'36"

NOTE: ROLL TYPE CURB & GUTTER (TYPE 2) TO BE CONSTRUCTED ON THE PAVEMENT SHOWN ON THIS SHEET. TOP OF CURB ELEVATIONS ARE GIVEN FOR FULL HEIGHT CURB (TYPE 4).



**BAUGHMAN COMPANY**  
 315 Ellis St.  
 Wichita, KS 67211  
 316-262-7271  
 BaughmanCo.com

NRD ADDITION  
 Phase I & Entrance

**SAGEBRUSH**

STREET IMPROVEMENTS

PROJECT NUMBER:  
 21-03-E868 & E869

DESIGN: NBW DRAWN: TMS

DATE: December 6, 2021

SHEET OF  
**4 47**

File: E:\Projects\NRD Addition\_19-04-P448\Engineering\Phase 1\STR 21-03-E868 E869\STR.dwg