

BENCHMARKS:
 BM #1: Chiseled square on NW corner of catch basin, 262.2' W. & 35.9' N. of S1/4 Cor., Sec. 1, TWP. 27-S., R-2-E.
 Elev. = 1361.76 NAVD88

BM #2: Chiseled square on NW corner of catch basin, 962.0' W. & 35.8' N. of S1/4 Cor., Sec. 1, TWP. 27-S., R-2-E.
 Elev. = 1363.84 NAVD88

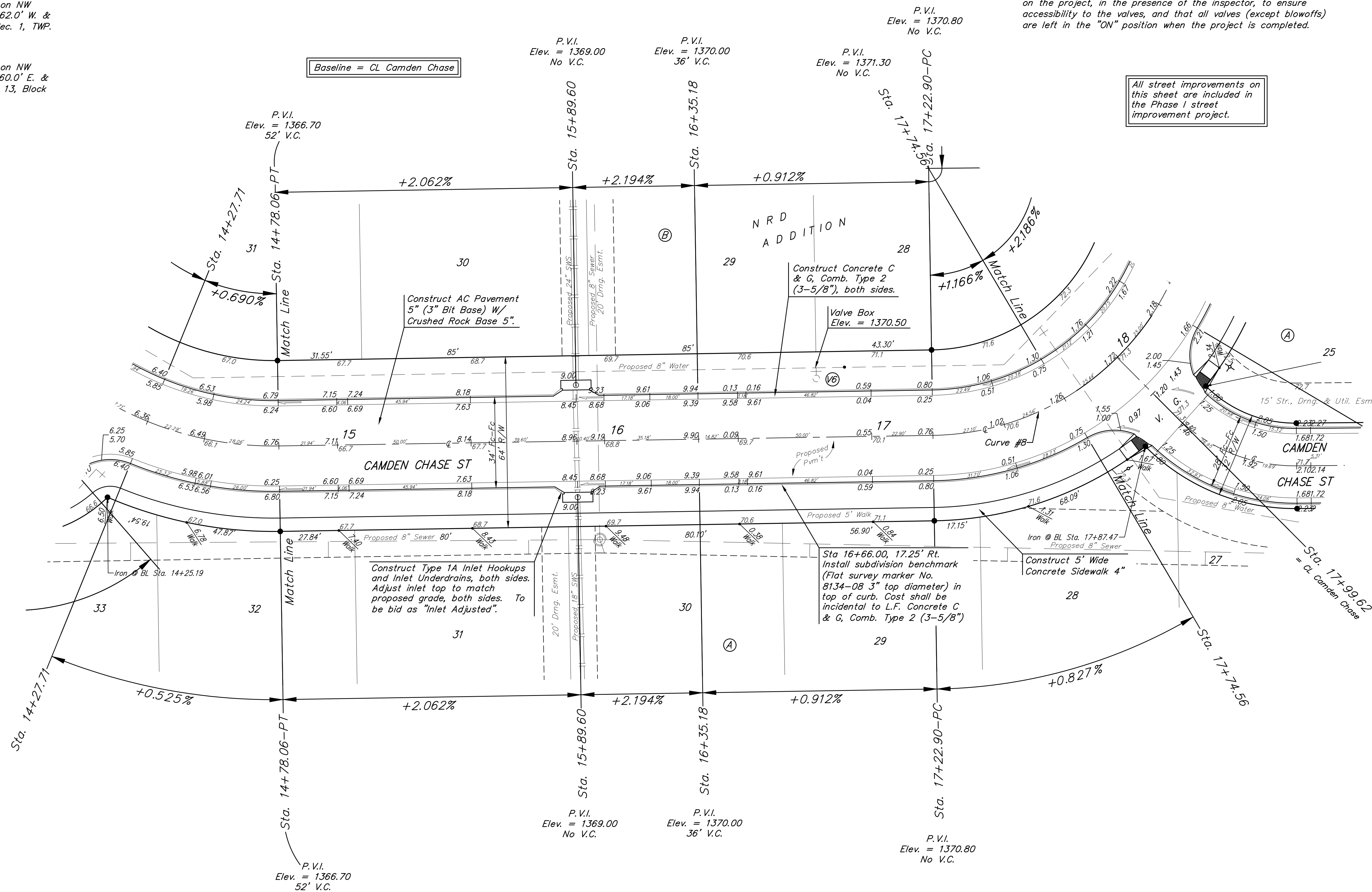
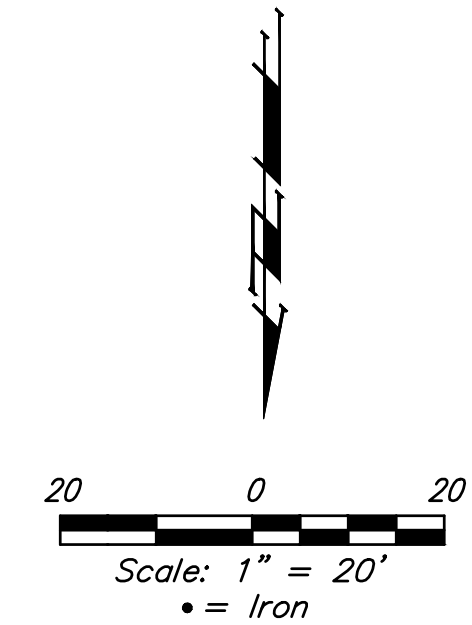
BM #3: Chiseled square on NW corner of catch basin, 160.0' E. & 24.3' S. of SW Cor., Lot 13, Block A, NRD Addition.
 Elev. = 1369.05 NAVD88

Street & Station	Location Description	Elevation
Camden Chase 16+66.00, 17.25' Rt.	Adjacent to Fire Hydrant near common front lot corner of Lots 29 and 30, Block A, NRD Addition.	

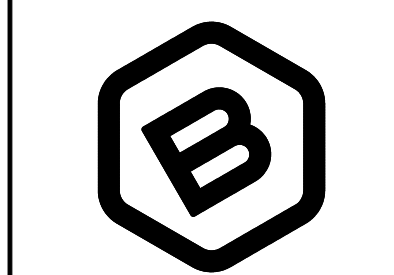
WATER VALVE LOCATION TABLE

VALVE NUMBER	STREET	BASELINE STATION	OFFSET DISTANCE	OFFSET DIRECTION
V6	Camden Chase	16+79.60	26'	Lt.

Paving contractor will be responsible to operate all water valves on the project, in the presence of the inspector, to ensure accessibility to the valves, and that all valves (except blowoffs) are left in the "ON" position when the project is completed.



All street improvements on this sheet are included in the Phase I street improvement project.



BAUGHMAN COMPANY
 315 Ellis St.
 Wichita, KS 67211
 316-262-7271
 BaughmanCo.com

NRD ADDITION
 Phase I & Entrance

CAMDEN CHASE

STREET IMPROVEMENTS

PROJECT NUMBER:
 21-03-E868 & E869

DESIGN: NBW DRAWN: TMS

DATE: December 6, 2021

SHEET OF
6 47

NOTE: ROLL TYPE CURB & GUTTER (TYPE 2) TO BE CONSTRUCTED ON THE PAVEMENT SHOWN ON THIS SHEET. TOP OF CURB ELEVATIONS ARE GIVEN FOR FULL HEIGHT CURB (TYPE 4).

File: E:\Projects\NRD Addition_19-04-P448\Engineering\Phase I\STR 21-03-E868 E869\STRPdm.dwg