

**BENCHMARKS:**  
 BM #1: Chiseled square on NW corner of catch basin, 262.2' W. & 35.9' N. of S1/4 Cor., Sec. 1, TWP. 27-S., R-2-E.  
 Elev. = 1361.76 NAVD88

BM #2: Chiseled square on NW corner of catch basin, 962.0' W. & 35.8' N. of S1/4 Cor., Sec. 1, TWP. 27-S., R-2-E.  
 Elev. = 1363.84 NAVD88

BM #3: Chiseled square on NW corner of catch basin, 160.0' E. & 24.3' S. of SW Cor., Lot 13, Block A, NRD Addition.  
 Elev. = 1369.05 NAVD88

All street improvements on this sheet are included in the Phase I street improvement project.

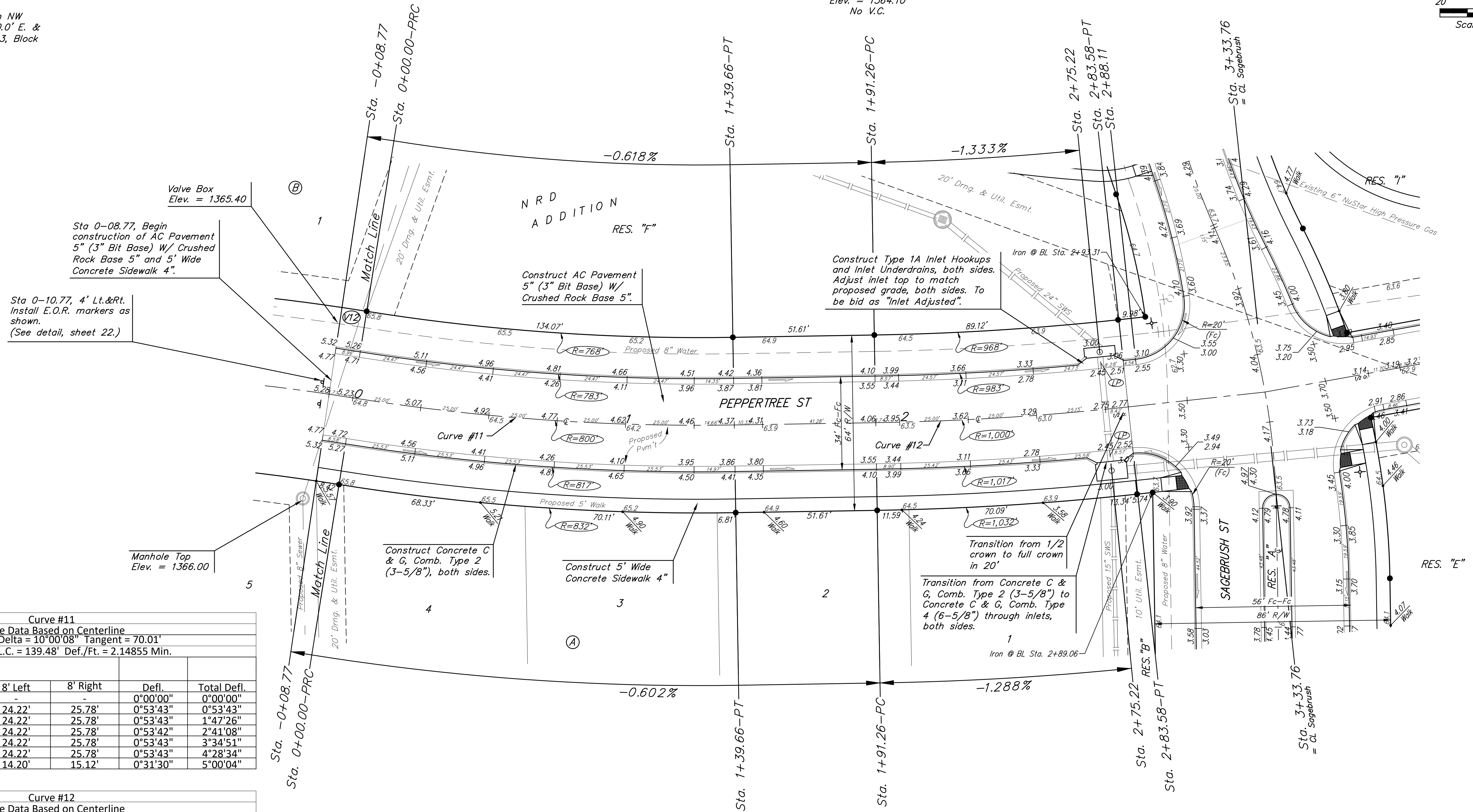
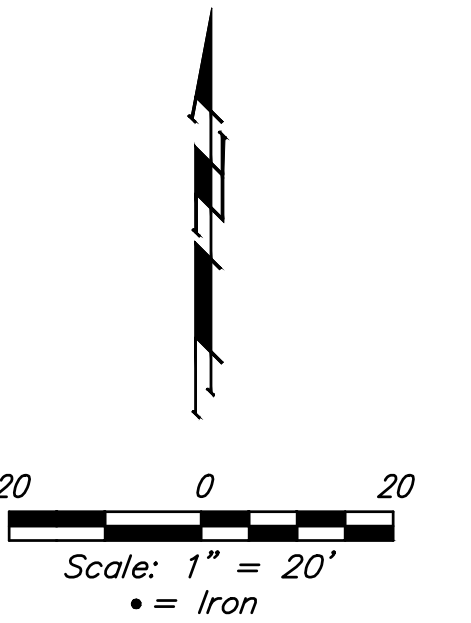
WATER VALVE LOCATION TABLE

| VALVE NUMBER | STREET     | BASELINE STATION | OFFSET DISTANCE | OFFSET DIRECTION |
|--------------|------------|------------------|-----------------|------------------|
| V12          | Peppertree | 0+08.77          | 26'             | Lt.              |

Baseline = CL Peppertree

Paving contractor will be responsible to operate all water valves on the project, in the presence of the inspector, to ensure accessibility to the valves, and that all valves (except blowoffs) are left in the "ON" position when the project is completed.

P.V.I.  
 Elev. = 1364.10  
 No V.C.



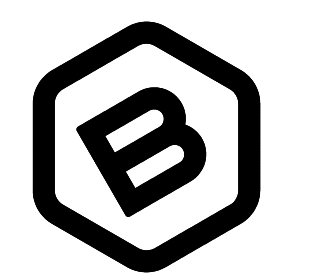
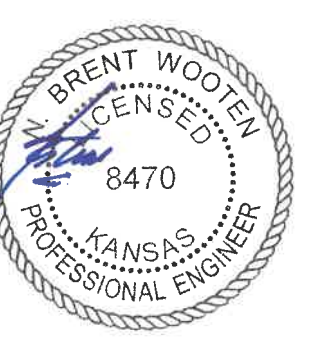
Curve #11  
 Curve Data Based on Centerline  
 Rad. = 800' Delta = 10°00'08" Tangent = 70.01'  
 Arc = 139.66' L.C. = 139.48' Def./Ft. = 2.14855 Min.

| Face Chord Lengths | Station | Arc    | 8' Left | 8' Right | Defl.    | Total Defl. |
|--------------------|---------|--------|---------|----------|----------|-------------|
|                    | 0+00.00 | -      | -       | -        | 0°00'00" | 0°00'00"    |
|                    | 0+25.00 | 25.00' | 24.22'  | 25.78'   | 0°53'43" | 0°53'43"    |
|                    | 0+50.00 | 25.00' | 24.22'  | 25.78'   | 0°53'43" | 1°47'26"    |
|                    | 0+75.00 | 25.00' | 24.22'  | 25.78'   | 0°53'42" | 2°41'08"    |
|                    | 1+00.00 | 25.00' | 24.22'  | 25.78'   | 0°53'43" | 3°34'51"    |
|                    | 1+25.00 | 25.00' | 24.22'  | 25.78'   | 0°53'43" | 4°28'34"    |
|                    | 1+39.66 | 14.66' | 14.20'  | 15.12'   | 0°31'30" | 5°00'04"    |

Curve #12  
 Curve Data Based on Centerline  
 Rad. = 1000' Delta = 5°16'30" Tangent = 46.07'  
 Arc = 92.32' L.C. = 92.03' Def./Ft. = 1.71415 Min.

| Face Chord Lengths | Station | Arc    | 8' Left | 8' Right | Defl.    | Total Defl. |
|--------------------|---------|--------|---------|----------|----------|-------------|
|                    | 1+91.26 | -      | -       | -        | 0°00'00" | 0°00'00"    |
|                    | 2+00.00 | 8.74'  | 8.50'   | 8.93'    | 0°14'59" | 0°14'59"    |
|                    | 2+25.00 | 25.00' | 24.31'  | 25.55'   | 0°42'51" | 0°57'50"    |
|                    | 2+50.00 | 25.00' | 24.31'  | 25.55'   | 0°42'51" | 1°40'41"    |
|                    | 2+75.00 | 25.00' | 24.31'  | 25.55'   | 0°42'52" | 2°23'33"    |
|                    | 2+83.58 | 8.58'  | 8.34'   | 8.77'    | 0°14'42" | 2°38'15"    |

NOTE: ROLL TYPE CURB & GUTTER (TYPE 2) TO BE CONSTRUCTED ON THE PAVEMENT SHOWN ON THIS SHEET. TOP OF CURB ELEVATIONS ARE GIVEN FOR FULL HEIGHT CURB (TYPE 4).



**BAUGHMAN COMPANY**  
 315 Ellis St.  
 Wichita, KS 67211  
 316-262-7271  
 BaughmanCo.com

NRD ADDITION  
 Phase I & Entrance

**PEPPERTREE**

STREET IMPROVEMENTS

PROJECT NUMBER:  
 21-03-E868 & E869

DESIGN: NBW DRAWN: TMS  
 DATE: December 6, 2021

SHEET OF  
**9 47**

File: E:\Projects\NRD Addition\19-04-P448\Engineering\Phase 1\STR-21-03-E868 E869\STR.dwg