

BENCHMARKS:
 BM #1: Chiseled square on NW corner of catch basin, 262.2' W. & 35.9' N. of S1/4 Cor., Sec. 1, TWP. 27-S, R-2-E.
 Elev. = 1361.76 NAVD88

BM #2: Chiseled square on NW corner of catch basin, 962.0' W. & 35.8' N. of S1/4 Cor., Sec. 1, TWP. 27-S, R-2-E.
 Elev. = 1363.84 NAVD88

BM #3: Chiseled square on NW corner of catch basin, 160.0' E. & 24.3' S. of SW Cor., Lot 13, Block A, NRD Addition.
 Elev. = 1369.05 NAVD88

Subdivision Bench Marks		
Street & Station	Location Description	Elevation
Sagebrush Ct. 0+37.00, 18.25' Rt.	Adjacent to Fire Hydrant at E. End of SE Curb Return of Sagebrush & Sagebrush Ct.	

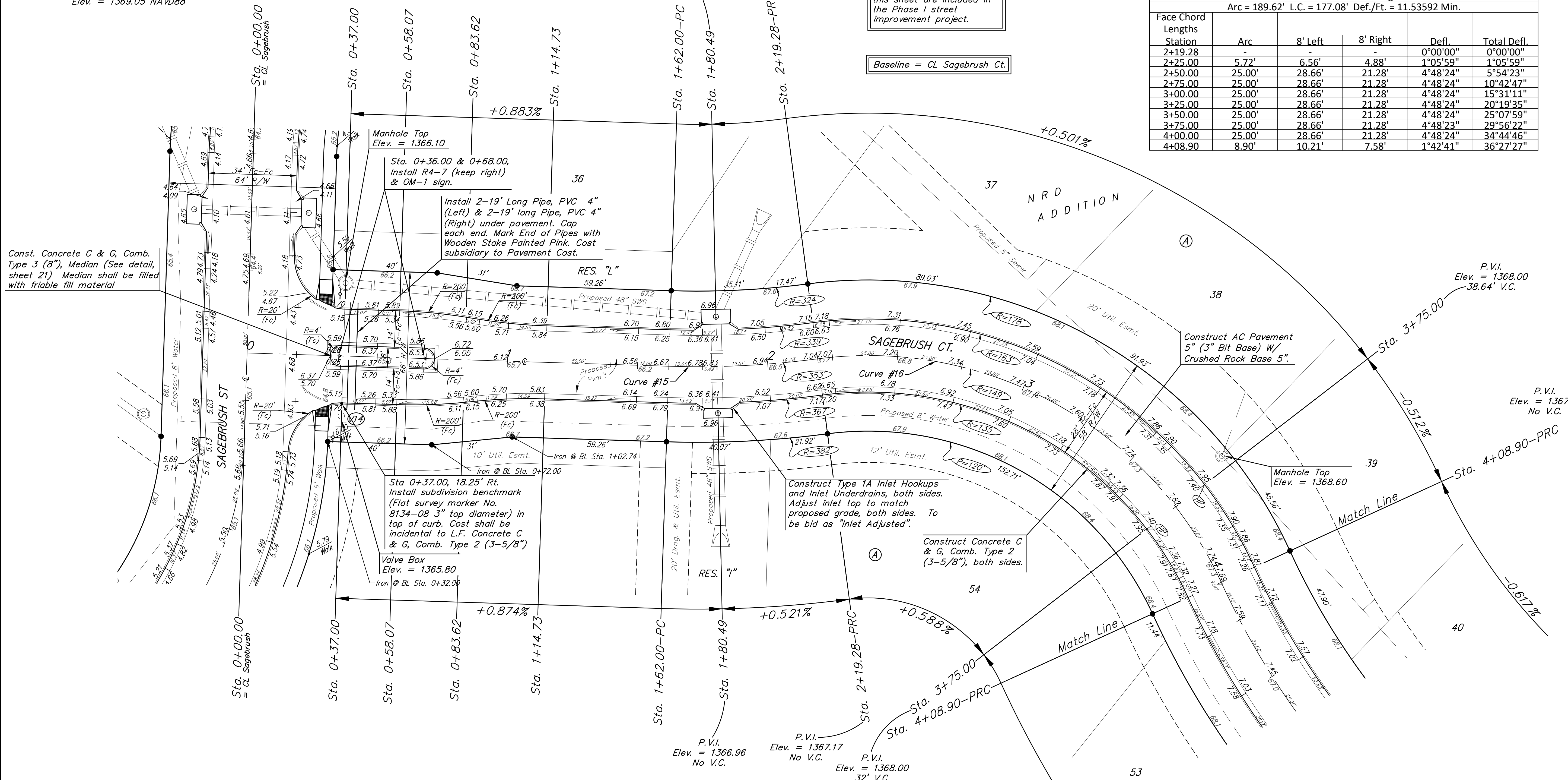
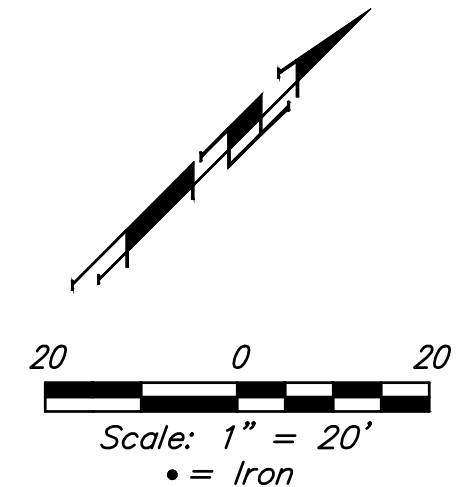
WATER VALVE LOCATION TABLE

VALVE NUMBER	STREET	BASELINE STATION	OFFSET DISTANCE	OFFSET DIRECTION
V14	Sagebrush Ct.	0+37.00	27'	Rt.

Paving contractor will be responsible to operate all water valves on the project, in the presence of the inspector, to ensure accessibility to the valves, and that all valves (except blowoffs) are left in the "ON" position when the project is completed.

Curve #15						
Curve Data Based on Centerline						
Rad. = 353' Delta = 9°17'52" Tangent = 28.70'						
Arc = 57.28' L.C. = 57.22' Def./Ft. = 4.86965 Min.						
Face Chord Lengths	Station	Arc	8' Left	8' Right	Defl.	Total Defl.
	1+62.00	-	-	-	0°00'00"	0°00'00"
	1+75.00	13.00'	12.19'	13.81'	1°03'18"	1°03'18"
	2+00.00	25.00'	23.44'	26.55'	2°01'45"	3°05'03"
	2+19.28	19.28'	18.08'	20.48'	1°33'53"	4°38'56"

Curve #16						
Curve Data Based on Centerline						
Rad. = 149' Delta = 72°54'53" Tangent = 110.08'						
Arc = 189.62' L.C. = 177.08' Def./Ft. = 11.53592 Min.						
Face Chord Lengths	Station	Arc	8' Left	8' Right	Defl.	Total Defl.
	2+19.28	-	-	-	0°00'00"	0°00'00"
	2+25.00	5.72'	6.56'	4.88'	1°05'59"	1°05'59"
	2+50.00	25.00'	28.66'	21.28'	4°48'24"	5°54'23"
	2+75.00	25.00'	28.66'	21.28'	4°48'24"	10°42'47"
	3+00.00	25.00'	28.66'	21.28'	4°48'24"	15°31'11"
	3+25.00	25.00'	28.66'	21.28'	4°48'24"	20°19'35"
	3+50.00	25.00'	28.66'	21.28'	4°48'24"	25°07'59"
	3+75.00	25.00'	28.66'	21.28'	4°48'23"	29°56'22"
	4+00.00	25.00'	28.66'	21.28'	4°48'24"	34°44'46"
	4+08.90	8.90'	10.21'	7.58'	1°42'41"	36°27'27"



Const. Concrete C & G, Comb. Type 3 (8"), Median (See detail, sheet 21) Median shall be filled with friable fill material

Install 2-19' Long Pipe, PVC 4" (Left) & 2-19' long Pipe, PVC 4" (Right) under pavement. Cap each end. Mark End of Pipes with Wooden Stake Painted Pink. Cost subsidiary to Pavement Cost.

Construct Type 1A Inlet Hookups and Inlet Underdrains, both sides. Adjust inlet top to match proposed grade, both sides. To be bid as "Inlet Adjusted".

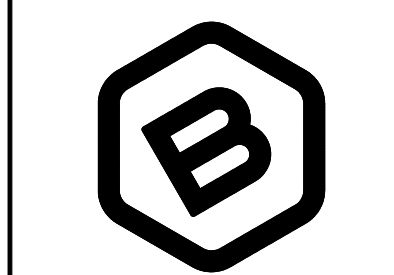
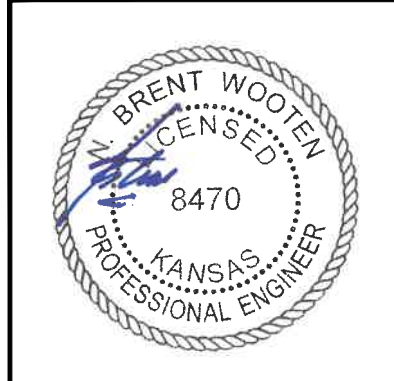
Construct Concrete C & G, Comb. Type 2 (3-5/8"), both sides.

Construct AC Pavement 5" (3" Bit Base) W/ Crushed Rock Base 5".

All street improvements on this sheet are included in the Phase I street improvement project.

Baseline = CL Sagebrush Ct.

NOTE: ROLL TYPE CURB & GUTTER (TYPE 2) TO BE CONSTRUCTED ON THE PAVEMENT SHOWN ON THIS SHEET. TOP OF CURB ELEVATIONS ARE GIVEN FOR FULL HEIGHT CURB (TYPE 4).



BAUGHMAN COMPANY
 315 Ellis St.
 Wichita, KS 67211
 316-262-7271
 BaughmanCo.com

NRD ADDITION
 Phase I & Entrance

SAGEBRUSH CT.

STREET IMPROVEMENTS

PROJECT NUMBER:
 21-03-E868 & E869

DESIGN: NBW DRAWN: TMS

DATE: December 6, 2021

SHEET OF
11 47

File: E:\Projects\NRD Addition_19-04-P448\Engineering\Phase I\STR 21-03-E868 E869\STR.dwg