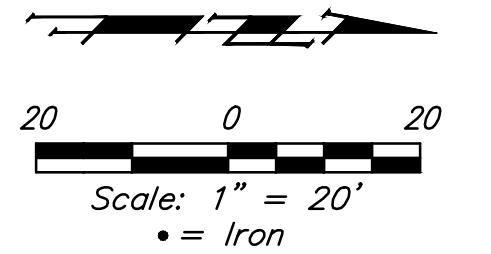


WATER VALVE LOCATION TABLE

VALVE NUMBER	STREET	BASELINE STATION	OFFSET DISTANCE	OFFSET DIRECTION
V1	Sagebrush	2+68.22	30.7'	Lt.
V2	Sagebrush	2+81.00	28.5'	Lt.

Subdivision Bench Marks		
Street & Station	Location Description	Elevation
Sagebrush 2+78.75, 20.00' Lt.	Adjacent to Fire Hydrant at N. End of NW Curb Return of Sagebrush and Peppertree.	



BENCHMARKS:
 BM #1: Chiseled square on NW corner of catch basin, 262.2' W. & 35.9' N. of S1/4 Cor., Sec. 1, TWP. 27-S., R-2-E.
 Elev. = 1361.76 NAVD88

BM #2: Chiseled square on NW corner of catch basin, 962.0' W. & 35.8' N. of S1/4 Cor., Sec. 1, TWP. 27-S., R-2-E.
 Elev. = 1363.84 NAVD88

BM #3: Chiseled square on NW corner of catch basin, 160.0' E. & 24.3' S. of SW Cor., Lot 13, Block A, NRD Addition.
 Elev. = 1369.05 NAVD88

Paving contractor will be responsible to operate all water valves on the project, in the presence of the inspector, to ensure accessibility to the valves, and that all valves (except blowoffs) are left in the "ON" position when the project is completed.

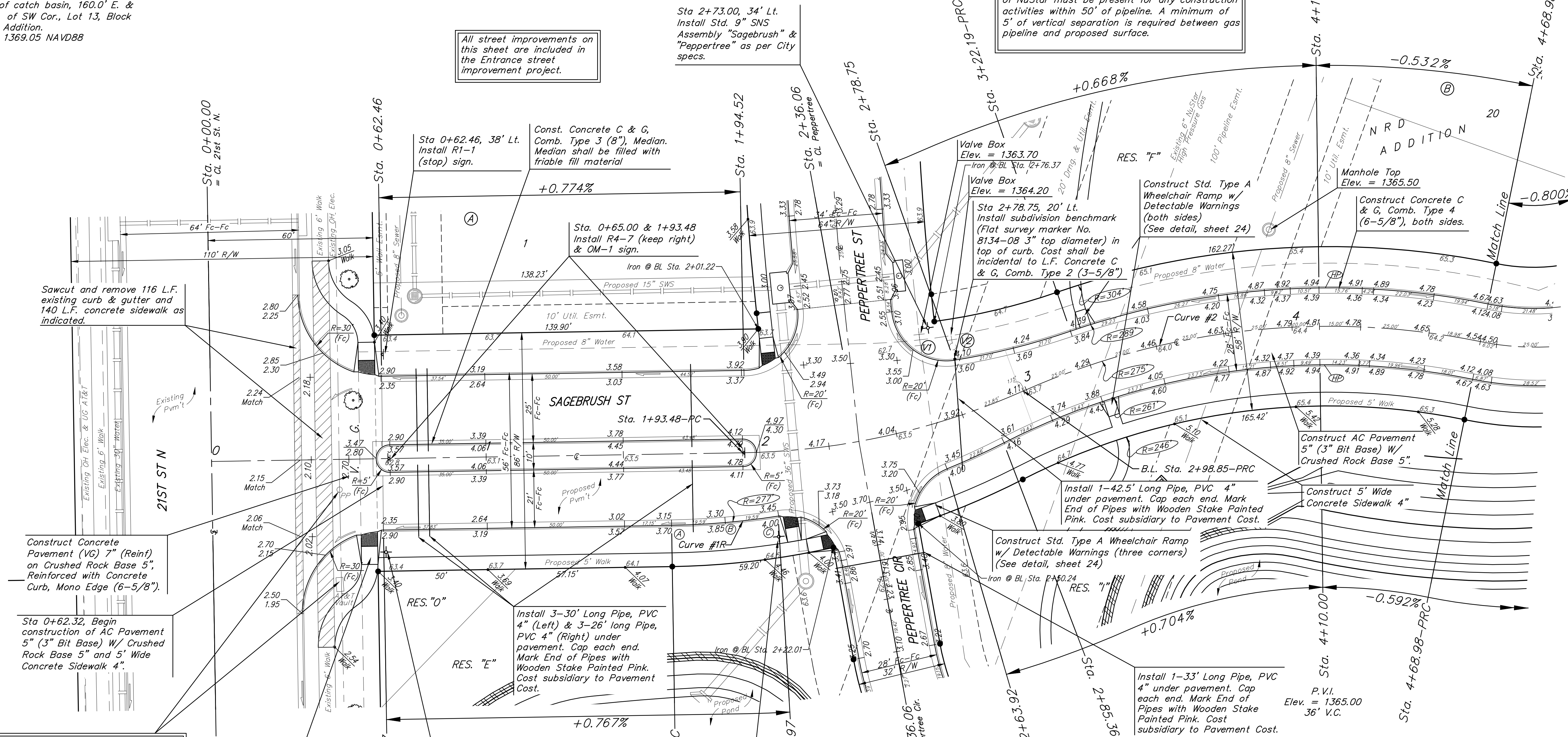
All street improvements on this sheet are included in the Entrance street improvement project.

Baseline = CL Sagebrush

* When construction will occur within 50' of either side of NuStar gas pipeline, Contractor shall contact Kansas One-Call and NuStar a minimum of 72 hours prior to construction. Teresa Landry (316)322-0325. A representative of NuStar must be present for any construction activities within 50' of pipeline. A minimum of 5' of vertical separation is required between gas pipeline and proposed surface.

P.V.I. Elev. = 1365.00
40' V.C.

P.V.I. Elev. = 1364.67
No V.C.



Contact utility companies 3 weeks prior to construction to coordinate relocation of power pole and protection of AT&T vault.
 Heide Bryan, Evergy, 261-6354
 AT&T 1-800-246-8464

Construct Std. Type A Wheelchair Ramp w/ Detectable Warnings (both sides) (See detail, sheet 24)

Sta 0+63.00, 34' Rt. Install Metro 9" SNS Assembly "Sagebrush (____ N)" & "21st St N (____ E)" as per City specs.

Sta 2+05.00, 31' Rt. Install Std. 9" SNS Assembly Metro 9" SNS Assembly "Peppertree Cir (____)" Dead End" as per City specs.

Curve #1R
 Curve Data Based on Face of Curb
 Rad. = 277' Delta = 8°06'12" Tangent = 19.62'
 Arc = 39.18' L.C. = 39.14' Def./Ft. = 6.20470 Min.

Chord Lengths	Arc	8' Right	Defl.	Total Defl.
Station				
A	19.59'	20.15'	0°00'00"	0°00'00"
B	19.59'	20.15'	2°01'33"	2°01'33"
C	19.59'	20.15'	2°01'33"	4°03'06"

Curve #2
 Curve Data Based on Centerline
 Rad. = 275' Delta = 38°31'39" Tangent = 96.11'
 Arc = 184.92' L.C. = 181.45' Def./Ft. = 6.25041 Min.

Face Chord Lengths	Station	Arc	8' Left	8' Right	Defl.	Total Defl.
2+84.06	-	-	-	-	0°00'00"	0°00'00"
3+00.00	15.94'	17.21'	14.66'	1°39'38"	1°39'38"	
3+22.19	22.19'	23.96'	20.41'	2°18'42"	3°58'20"	
3+25.00	2.81'	3.03'	2.59'	0°17'33"	4°15'53"	
3+50.00	25.00'	26.99'	22.99'	2°36'16"	6°52'09"	
3+75.00	25.00'	26.99'	22.99'	2°36'16"	9°28'25"	
4+00.00	25.00'	26.99'	22.99'	2°36'16"	12°04'40"	
4+25.00	25.00'	26.99'	22.99'	2°36'16"	14°40'56"	
4+50.00	25.00'	26.99'	22.99'	2°36'16"	17°17'12"	
4+68.98	18.98'	20.49'	17.46'	1°58'38"	19°15'50"	

BRENT WOOLEN
 LICENSED PROFESSIONAL ENGINEER
 8470

BAUGHMAN COMPANY
 315 Ellis St.
 Wichita, KS 67211
 316-262-7271
 BaughmanCo.com

NRD ADDITION
 Phase I & Entrance

SAGEBRUSH

STREET IMPROVEMENTS
 PROJECT NUMBER:
 21-03-E868 & E869
 DESIGN: NBW DRAWN: TMS
 DATE: January 12, 2022

SHEET OF
2 47

File: E:\Projects\NRD Addition_19-04-P448\Engineering\Phase 1\STR 21-03-E868 E869\STR.dwg