

BENCHMARKS:
 BM #1: Chiseled square on NW corner of catch basin, 262.2' W. & 35.9' N. of S1/4 Cor., Sec. 1, TWP. 27-S., R-2-E.
 Elev. = 1361.76 NAVD88

BM #2: Chiseled square on NW corner of catch basin, 962.0' W. & 35.8' N. of S1/4 Cor., Sec. 1, TWP. 27-S., R-2-E.
 Elev. = 1363.84 NAVD88

BM #3: Chiseled square on NW corner of catch basin, 160.0' E. & 24.3' S. of SW Cor., Lot 13, Block A, NRD Addition.
 Elev. = 1369.05 NAVD88

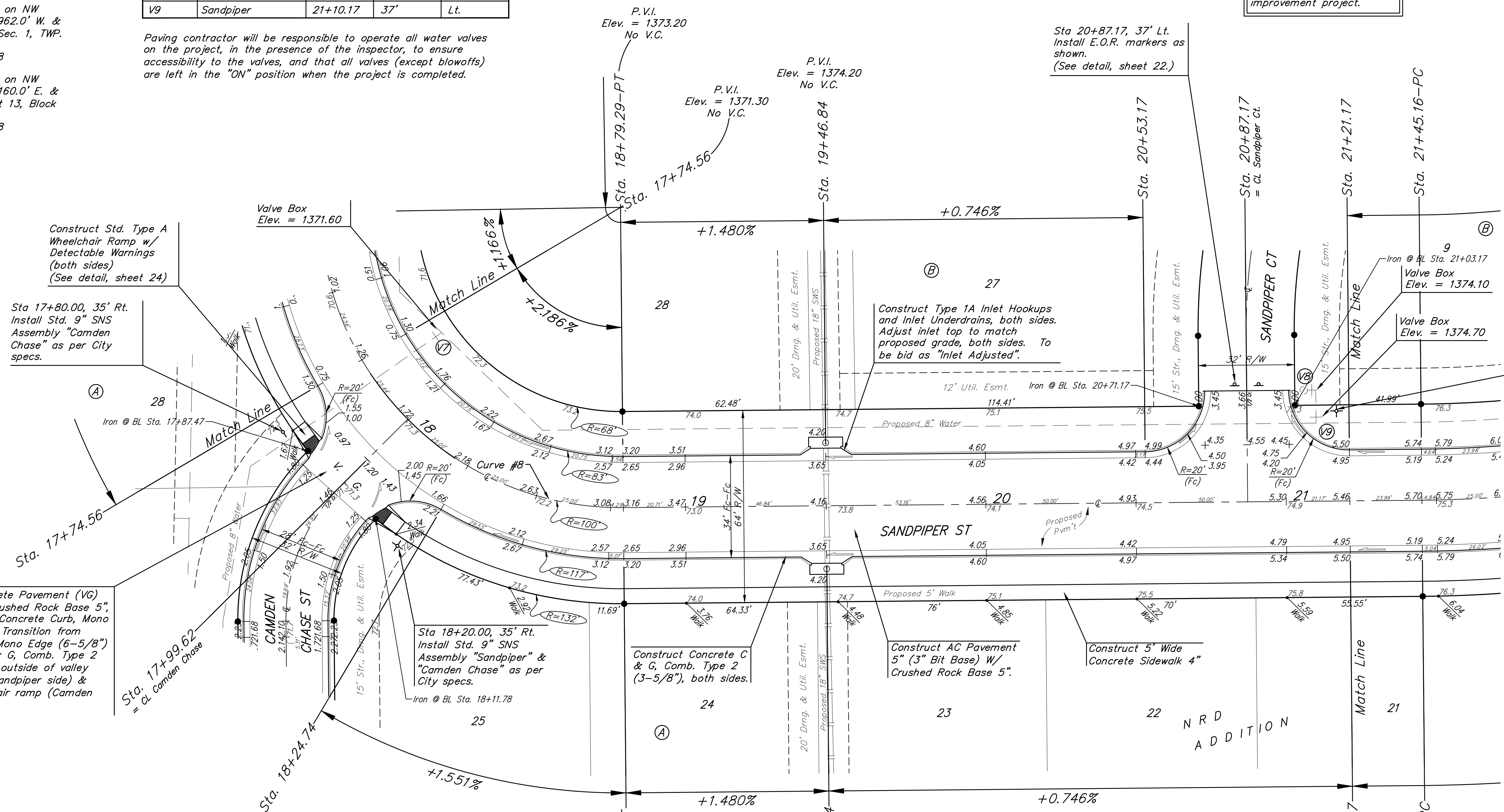
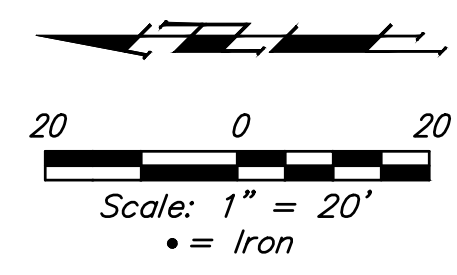
WATER VALVE LOCATION TABLE

VALVE NUMBER	STREET	BASELINE STATION	OFFSET DISTANCE	OFFSET DIRECTION
V7	Sandpiper	17+82.36	27.27'	Lt.
V8	Sandpiper	21+10.17	26'	Lt.
V9	Sandpiper	21+10.17	37'	Lt.

Paving contractor will be responsible to operate all water valves on the project, in the presence of the inspector, to ensure accessibility to the valves, and that all valves (except blowoffs) are left in the "ON" position when the project is completed.

Baseline = CL Sandpiper

All street improvements on this sheet are included in the Phase I street improvement project.



Construct Std. Type A Wheelchair Ramp w/ Detectable Warnings (both sides) (See detail, sheet 24)

Sta 17+80.00, 35' Rt. Install Std. 9" SNS Assembly "Camden Chase" as per City specs.

Iron @ Bl. Sta. 17+87.47

Construct Concrete Pavement (VG) 7" (Rein) on Crushed Rock Base 5", Reinforced with Concrete Curb, Mono Edge (6-5/8"). Transition from Concrete Curb, Mono Edge (6-5/8") to Concrete C & G, Comb. Type 2 (3-5/8") in 5', outside of valley gutter radius (Sandpiper side) & through wheelchair ramp (Camden Chase side).

Sta. 17+99.62 = CL Camden Chase

Sta 18+20.00, 35' Rt. Install Std. 9" SNS Assembly "Sandpiper" & "Camden Chase" as per City specs.

Iron @ Bl. Sta. 18+11.78

Construct Concrete C & G, Comb. Type 2 (3-5/8"), both sides.

Construct AC Pavement 5" (3" Bit Base) W/ Crushed Rock Base 5"

Construct 5' Wide Concrete Sidewalk 4"

Sta 21+17.00, 30' Lt. Install Std. 9" SNS Assembly "Sandpiper" & Metro 9" SNS Assembly "Sandpiper Ct" as per City specs.

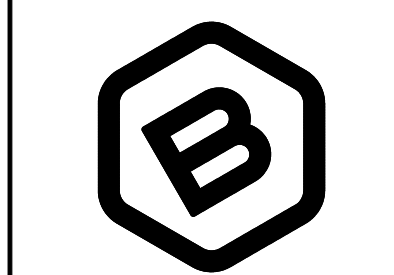
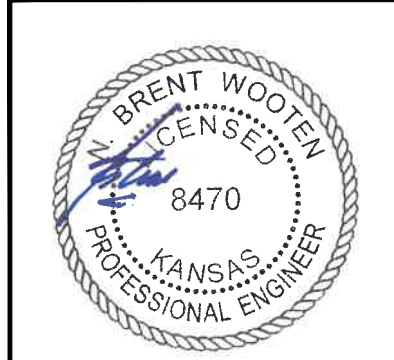
Iron @ Bl. Sta. 21+03.17

Valve Box Elev. = 1374.10

Valve Box Elev. = 1374.70

Curve #8						
Curve Data Based on Centerline						
Rad. = 100' Delta = 89°36'02" Tangent = 99.31'						
Arc = 156.39' L.C. = 140.93' Def./Ft. = 17.18791 Min.						
Face Chord Lengths	Station	Arc	8' Left	8' Right	Defl.	Total Defl.
	17+22.90	-	-	-	0°00'00"	0°00'00"
	17+25.00	2.10'	1.57'	2.62'	0°36'06"	0°36'06"
	17+50.00	25.00'	18.70'	31.17'	7°09'42"	7°45'48"
	17+74.56	24.56'	18.37'	30.62'	7°02'08"	14°47'56"
	17+99.62	25.06'	18.74'	31.24'	7°10'43"	21°58'39"
	18+24.74	25.12'	18.79'	31.32'	7°11'46"	29°10'25"
	18+50.00	25.26'	18.89'	31.49'	7°14'10"	36°24'35"
	18+75.00	25.00'	18.70'	31.17'	7°09'42"	43°34'17"
	18+79.29	4.29'	3.22'	5.36'	1°13'44"	44°48'01"

NOTE: ROLL TYPE CURB & GUTTER (TYPE 2) TO BE CONSTRUCTED ON THE PAVEMENT SHOWN ON THIS SHEET. TOP OF CURB ELEVATIONS ARE GIVEN FOR FULL HEIGHT CURB (TYPE 4).



BAUGHMAN COMPANY

315 Ellis St.
 Wichita, KS 67211
 316-262-7271
 BaughmanCo.com

NRD ADDITION
 Phase I & Entrance

SANDPIPER

STREET IMPROVEMENTS

PROJECT NUMBER:
 21-03-E868 & E869

DESIGN: NBW DRAWN: TMS

DATE: December 6, 2021

SHEET OF
7 47

File: E:\Projects\NRD Addition_19-04-P448\Engineering\Phase 1\STR 21-03-E868 E869\STRpdm.dwg