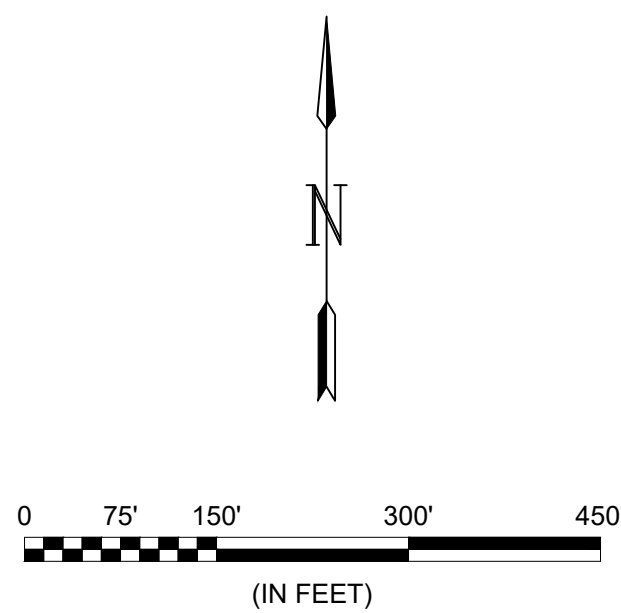


GENERAL NOTES:

- The Contractor shall comply with all applicable safety regulations. All construction shall be completed following current City Standard Specifications and Special Provisions.
- Contractor will be required to provide notice to utility companies a minimum of seventy-two (72) hours prior to any excavation, as follows:
 Kansas One-Call 687-2470
 The Contractor must notify the following in case of an emergency:
 AT&T 1-800-246-8464
 Black Hills Energy 1-800-694-8989
 City of Wichita Water & Sewer Dept. 1-316-219-8921
 City of Wichita Stormwater 1-316-268-4090
 City of Wichita Traffic 1-316-268-4034
 Cox Communications 1-888-249-3530
 Kansas Gas Service 1-888-482-4950
 Evergy 1-800-544-4857
- Utility service lines, poles, etc. are to be adjusted as necessary by others prior to construction unless the plans specifically call for their adjustment by the Contractor or unless the plans specifically identify a utility to be adjusted by its owner during construction. Existing utilities and their location, as shown on the plans, represent the best information obtainable for design. The Contractor will be required to work around existing utilities within the right-of-way which do not conflict with proposed construction.
- Rubble from the removal of miscellaneous structures and excess excavation which is to be wasted shall be disposed of on sites to be provided by the Contractor. These sites shall be approved by the Engineer as to suitability, appearance and site location. Locations, in the opinion of the Engineer, that will leave an unsightly appearance will not be approved. All disposal sites must be approved by the Kansas Department of Health and Environment. Material either stockpiled or disposed of in a flood plain will require a Kansas State Board of Agriculture permit. Any material dumped in waters of the United States or wetlands is subject to U.S. Corps. of Engineers permitting regulations. Any material buried or stockpiled beyond approved construction limits will require additional archaeological investigations unless buried in a previously approved borrow location.
- Trees and shrubs in public right-of-way which are in direct conflict with proposed new construction shall be removed by the Contractor with the Engineer's approval. Trees and shrubs which are not in direct conflict with proposed new construction shall be saved and protected from damage.
- The Contractor shall give all property owners and/or tenants of developed property abutting the construction of this project a minimum of ten (10) days notice prior to start of construction.
- The Contractor shall be responsible for preserving property irons. The Contractor will be required to re-establish any property irons which are damaged or destroyed by his construction operations. Such irons shall be re-established by a licensed land surveyor in accordance with state laws.
- If traffic will be impacted by construction, a traffic control plan must be submitted and approved by the City Traffic Engineer at traffic@wichita.gov before construction can begin. The Contractor shall be responsible for all traffic control measures to facilitate construction. All construction zone markings and signage shall conform to the latest version of the Manual on Uniform Traffic Control Devices (MUTCD) as published by the US Dept. of Transportation, Federal Highway Administration. All costs associated with construction markings and signage shall be the Contractors responsibly.
- All elevations shown are NAVD88.
- All areas disturbed during construction that will not be under proposed pavement shall be restored to match existing conditions.
- The Contractor shall protect from damage and support existing utilities through constructions as approved by the utility owner and the Engineer at the contractors expense.
- Contractor shall limit the extent of trench openings overnight and weekends to less than 50 feet.
- Any sidewalk, drive approach, curb, or street pavement removed to construct project must have a pavement cut permit and be replaced by the City contractor. Permits can be obtained by calling 316-268-4501 or 316-268-4480.
- No shrink or swell factors have been applied to the earthwork quantities shown on this project. All earthwork quantities are based on raw surface volume comparisons.
- Excess dirt generated from installation of underground utilities and project earthwork is to remain on site and be stockpiled on Block 5. See Sheet 2 for more specific definition.
- The Geotechnical Report for the Detention Pond Area has been provided to the City of Wichita and is available to bidders.
- The Contractor shall strip the top 6" of soil from the entire site and stockpile it prior to any grading activity. This entire stockpiled topsoil shall be re-spread across the entire site as the final lift of grading. This volume is not taken into account for the earthwork estimate. Work shall be subsidiary to the bid item 'Site Clearing, L.S.'
- Compaction of fill in lots and right-of-way areas shall be 95% Standard Proctor Density. Compaction shall be verified through visual proof rolling of placed fill as well as moisture/density testing to be completed at a minimum frequency of 4 field density tests per day or 1 per 1,000 S.Y., whichever is greater. Results shall be provided to the Construction Engineer with copies to Garver. Work is subsidiary to the bid item 'Contractor Provided Testing, L.S.'



Stormwater Certification:
~~New Development~~ or Redevelopment (Circle One)
 Stormwater Permit # SW2019-0047
 NOI Permit # SWA20-01096

These construction plans were prepared in accordance with the current Stormwater Management Regulations as set forth in the City of Wichita's Stormwater Management Ordinance 16.32 and the policies/guidelines presented in the Wichita/Sedgwick County Stormwater Manual.

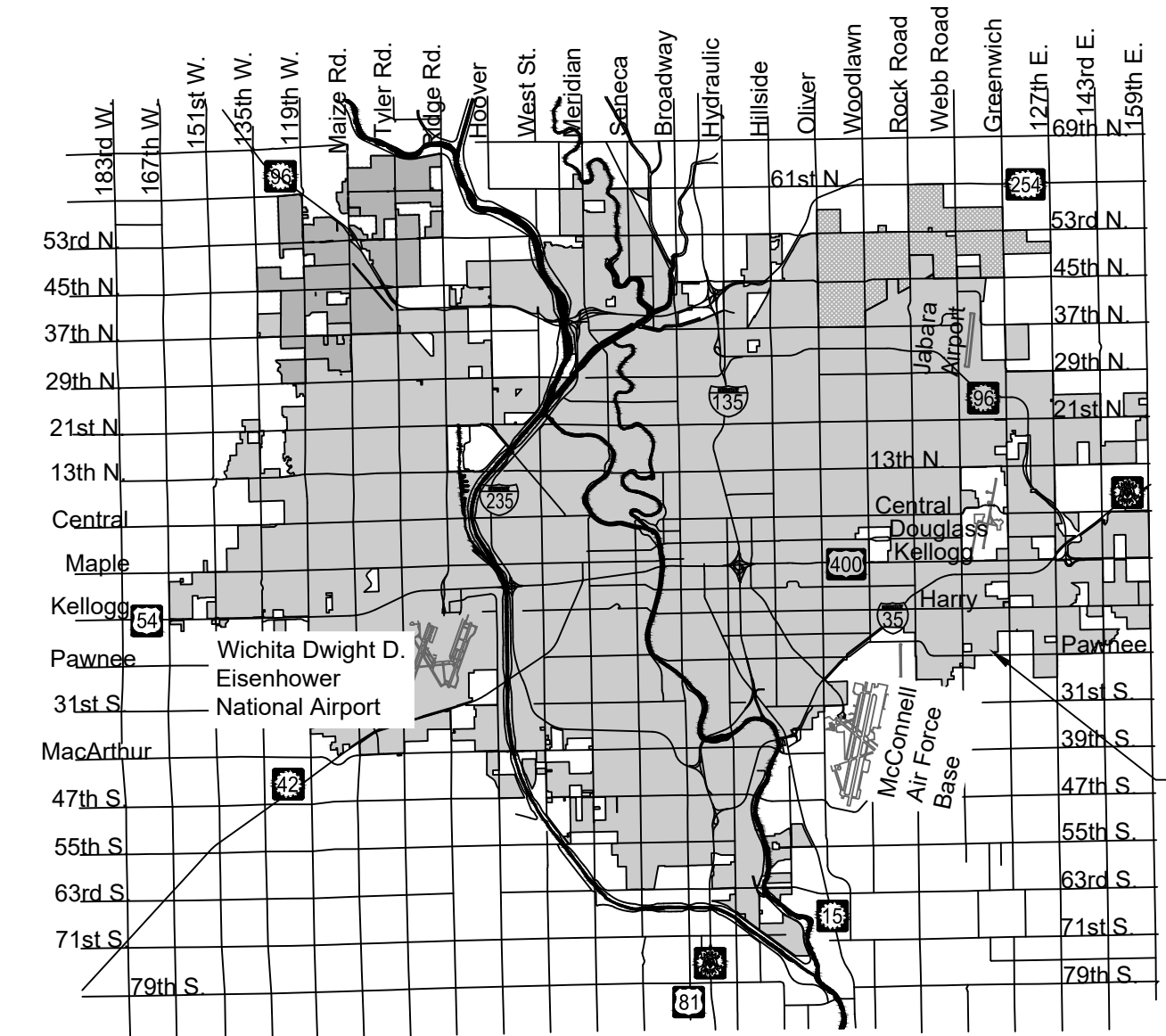
Site Area (Acres) = 75
 Disturbed Area (Acres) = 26
 Water Quality Treatment: Wet Pond
 Detention: Detention
 The BMP used for this development is Wet Pond.

Benchmarks

- BENCHMARK #1:**
 CHISELED SQUARE AT THE NORTHEAST CORNER OF A CURB INLET ON THE NORTH SIDE OF KINKAID ST.
 ELEVATION = 1366.78 (NAVD88)
- BENCHMARK #2:**
 CHISELED SQUARE ON THE TOP OF CURB AT THE SOUTHEAST CORNER OF CRANBROOK AND BELAIRE.
 ELEVATION = 1374.71 (NAVD88)
- BENCHMARK #3:**
 CHISELED SQUARE ON THE TOP OF CURB ON THE EAST SIDE OF CHATEAU, NORTH CURB RETURN OF THE HAMMER HEAD TURNAROUND.
 ELEVATION = 1361.42 (NAVD88)

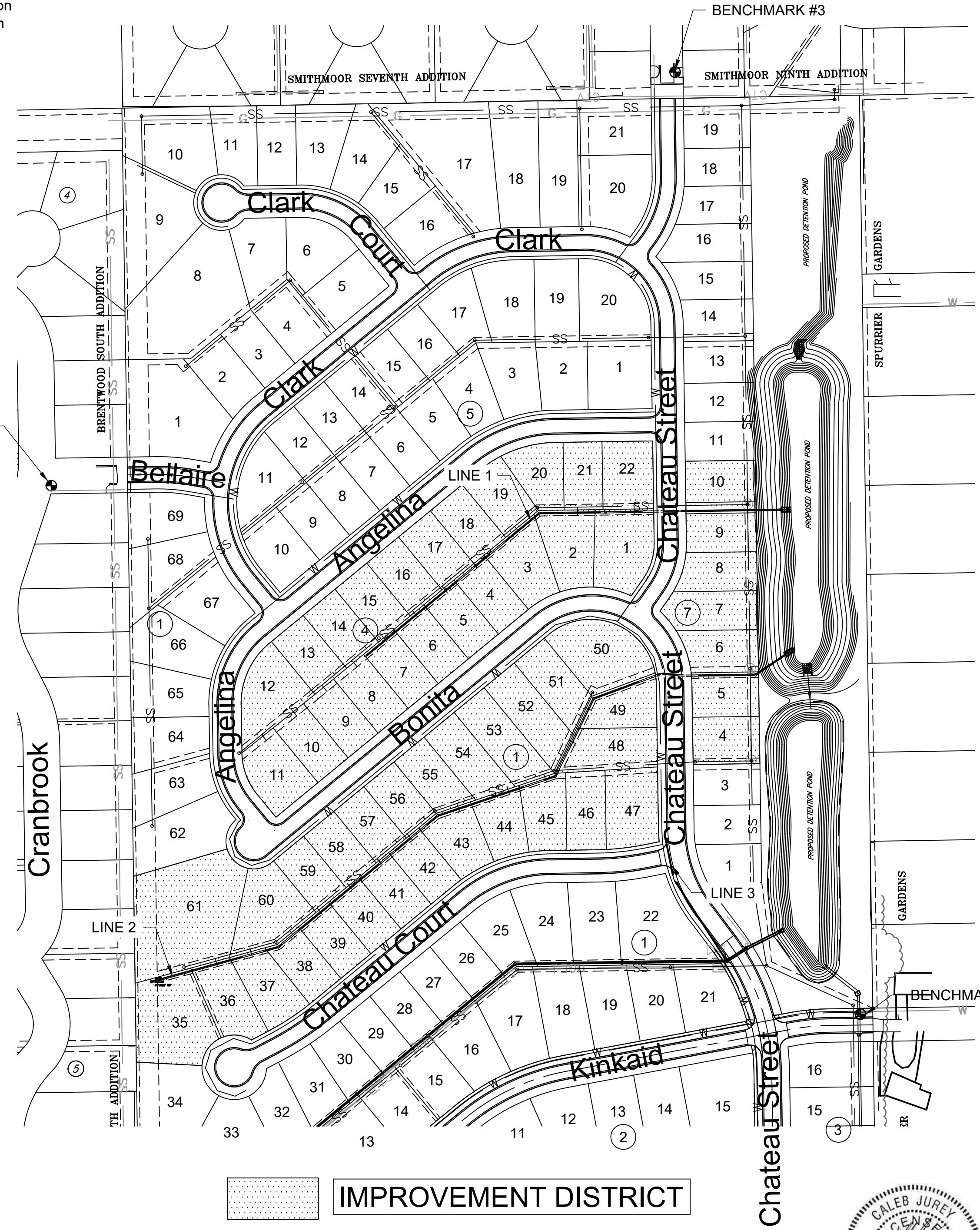
STORM WATER DRAIN #446 to serve Cedar Creek Addition, Phase 2 CITY OF WICHITA, KANSAS

Gary Janzen, P.E. City Engineer
 Project Number: 458-2021-085466
 Org Code Number: 47309521
 Munis Number: E1097



Vicinity Map

PROJECT LOCATION



SHEET INDEX	
SHEET	TITLE
1	TITLESHEET
2	PROJECT LIMITS
3	SITE CLEARING
4	TYPE 1A CURB INLET DETAILS
5	BACKYARD INLET DETAILS
6	INLET UNDERDRAIN DETAIL
7	STORM SEWER 1 (1 OF 2)
8	STORM SEWER 1 (2 OF 2)
9	STORM SEWER 2 (1 OF 3)
10	STORM SEWER 2 (2 OF 3)
11	STORM SEWER 2 (3 OF 3)
12	STORM SEWERS 3 & 4
13	4 CORNER GRADING PLAN
14	MAIN SITE GRADING
15	MAIN SITE GRADING
16	MAIN SITE GRADING
17	POND GRADING
19	POINT TABLES
20	POINT TABLES
21	POINT TABLES
22	EROSION CONTROL PLAN
25	BACK OF CURB DETAILS
26	SILT FENCE DETAILS
27	STRAW BALE DETAILS
28	STREET IMPROVEMENTS PROJECTS
29	SUBDIVISION DEVELOPMENT PROCESS
30	FINAL PLAT

Earthwork Estimate (For Information Only)	
Cut	47,350
Fill	27,500
Net (Cut)	19,850



JAN 2022

PLANS PREPARED BY

