



© 2021 GARVER, LLC  
 THIS DOCUMENT, ALONG WITH THE IDEAS AND DESIGNS CONVEYED HEREIN, SHALL BE CONSIDERED INSTRUMENTS OF PROFESSIONAL SERVICE AND ARE PROPERTY OF GARVER, LLC. ANY USE, REPRODUCTION, OR DISTRIBUTION OF THIS DOCUMENT, ALONG WITH THE IDEAS AND DESIGN CONTAINED HEREIN, IS PROHIBITED UNLESS AUTHORIZED IN WRITING BY GARVER, LLC OR EXPLICITLY ALLOWED IN THE GOVERNING PROFESSIONAL SERVICES AGREEMENT FOR THIS WORK.

1995 Midfield Road  
 Wichita, KS 67209  
 (316) 264-8008



REV.	DATE	DESCRIPTION	BY



CITY OF WICHITA  
 WICHITA, KANSAS  
 CEDAR CREEK ADD.,  
 PHASE 2 - SWS

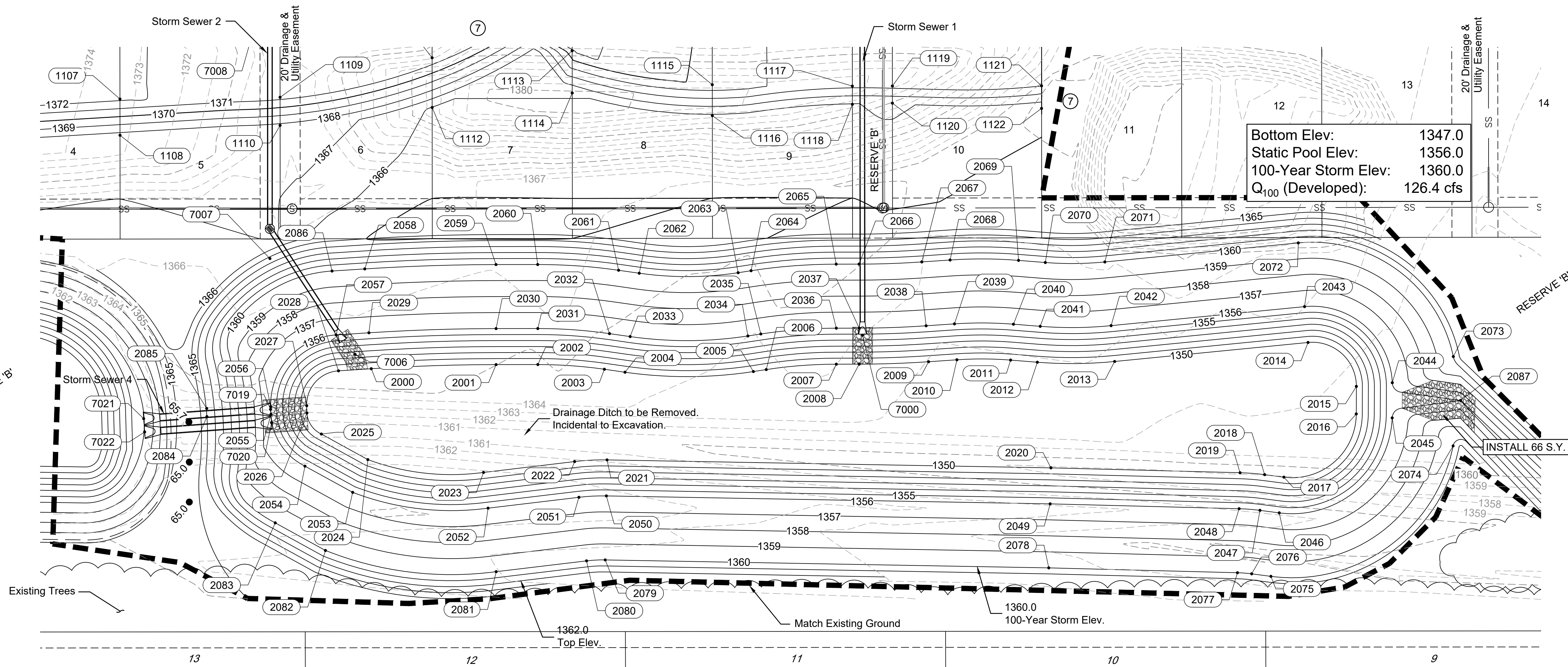
POND  
 GRADING

JOB NO.: 20T41009  
 DATE: JAN 2022  
 DESIGNED BY: CDJ  
 DRAWN BY: MCP

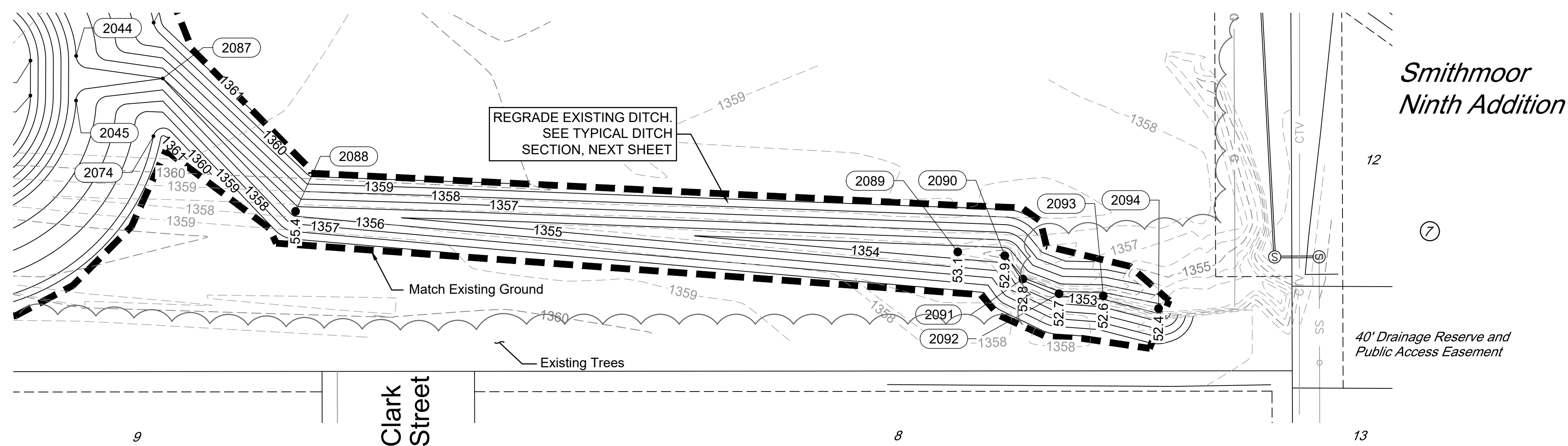
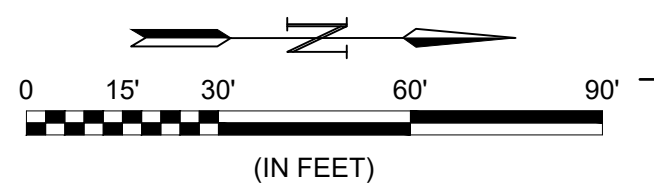
BAR IS ONE INCH ON ORIGINAL DRAWING  
 IF NOT ONE INCH ON THIS SHEET, ADJUST SCALES ACCORDINGLY.

DRAWING NUMBER  
 -----

SHEET NUMBER **17** OF **30**



Spurrier Gardens Addition



Smithmoor Ninth Addition

Spurrier Gardens Addition

File: L:\2020\20T41009 - Cedar Creek Phase 2\Drawings\C3D\Storm Sewer\MAIN SITE GRADING.dwg Last Save: 1/4/2022 10:08 AM Last saved by: CDJurey  
 Last plotted by: Jurey, Caleb D. Plot Style: --- Plot Scale: 1:2,584.9 Plot Date: 1/4/2022 1:46 PM Plotter used: None