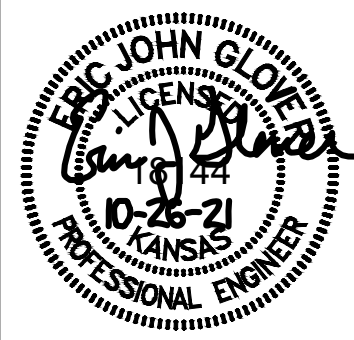




© 2021 GARVER, LLC
 THIS DOCUMENT, ALONG WITH THE IDEAS AND DESIGNS CONVEYED HEREIN, SHALL BE CONSIDERED INSTRUMENTS OF PROFESSIONAL SERVICE AND ARE PROPERTY OF GARVER, LLC. ANY USE, REPRODUCTION, OR DISTRIBUTION OF THIS DOCUMENT, ALONG WITH THE IDEAS AND DESIGN CONTAINED HEREIN, IS PROHIBITED UNLESS AUTHORIZED IN WRITING BY GARVER, LLC OR EXPLICITLY ALLOWED IN THE GOVERNING PROFESSIONAL SERVICES AGREEMENT FOR THIS WORK.

8535 E. 21st. St. N.
 Suite 130
 Wichita, KS 67206
 (316) 264-8008



REV.	DATE	DESCRIPTION	BY



CITY OF WICHITA
 WICHITA, KANSAS
 K-15 Neighborhood
 Water Main Replacement

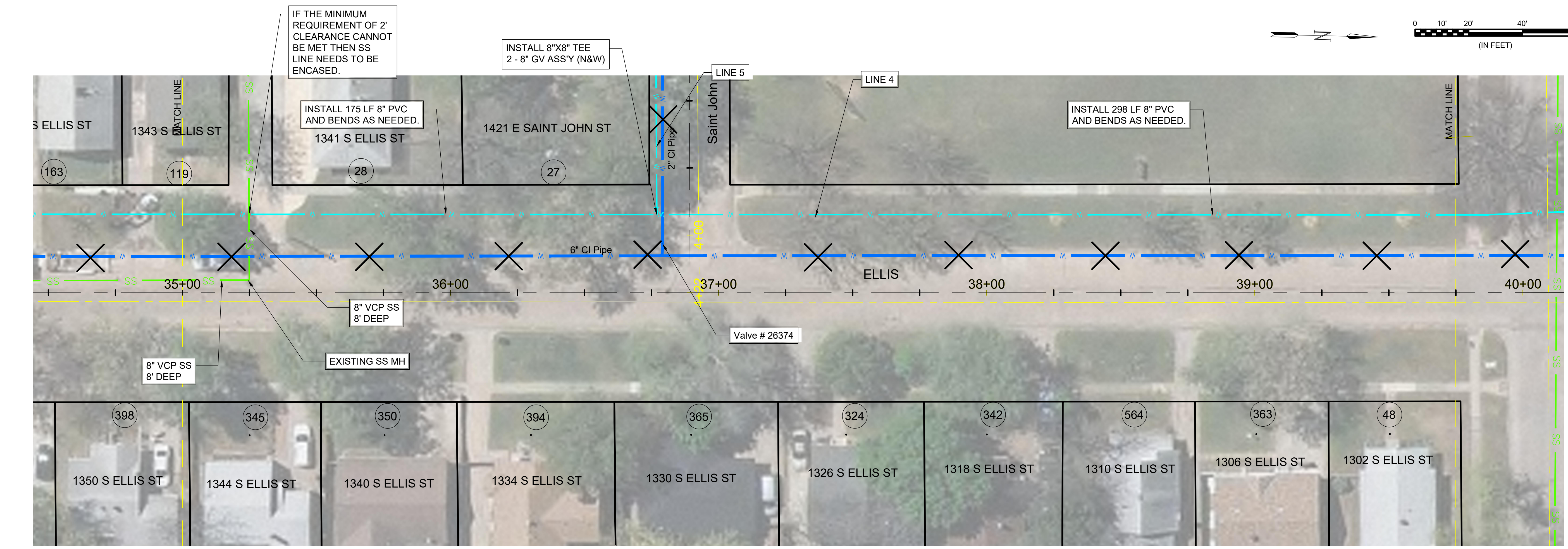
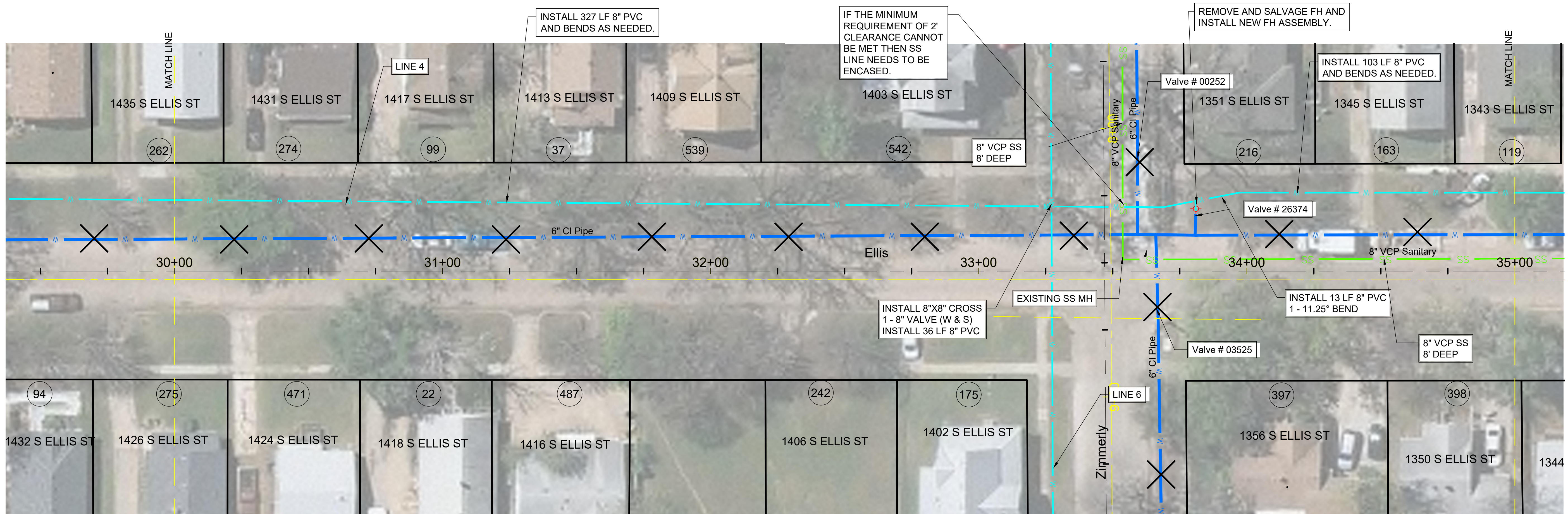
ELLIS AVE
 (4 of 5)

JOB NO.: 21T41001
 DATE: MARCH 2021
 DESIGNED BY: .
 DRAWN BY: .

BAR IS ONE INCH ON ORIGINAL DRAWING
 0 1" IF NOT ONE INCH ON THIS SHEET, ADJUST SCALES ACCORDINGLY.

DRAWING NUMBER

SHEET NUMBER **16** OF **32**



File: L:\2021\12\14\1001 - K-15 Neighborhood WMR\Drawings\C3D\Sheets\Group 1 - North of Harry\ELLIS (4).dwg Last Save: 10/25/2021 3:11 PM Last saved by: ADM\lner
 Last Plotted by: Glover, Eric J. Plot Style: --- Plot Scale: 1:2,5449 Plot Date: 10/26/2021 3:43 PM Plotter used: None