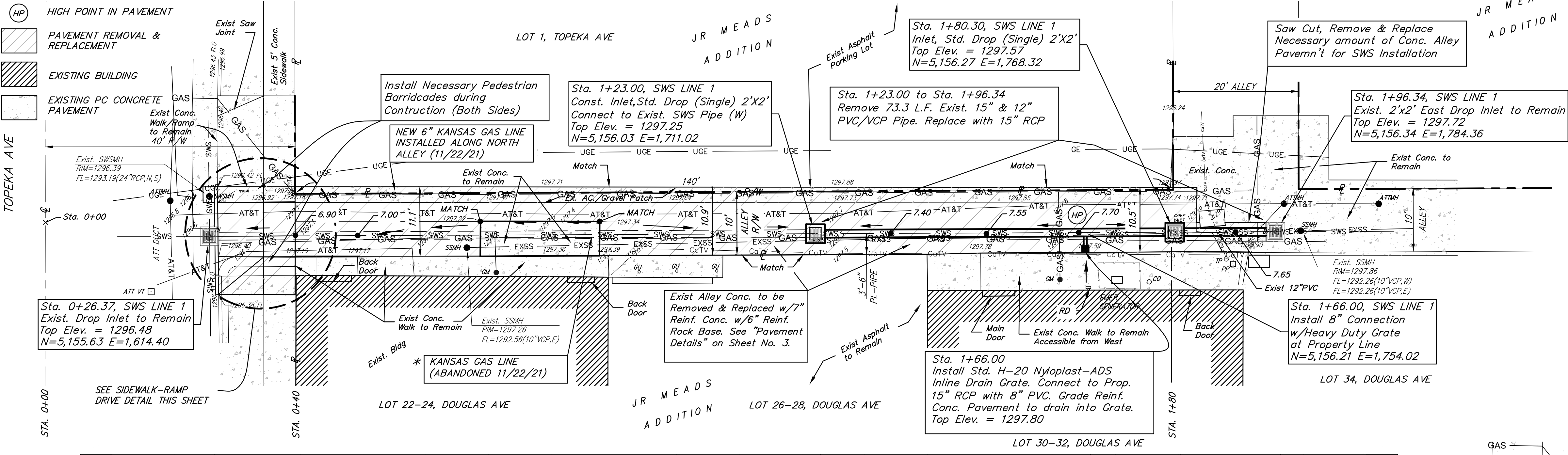
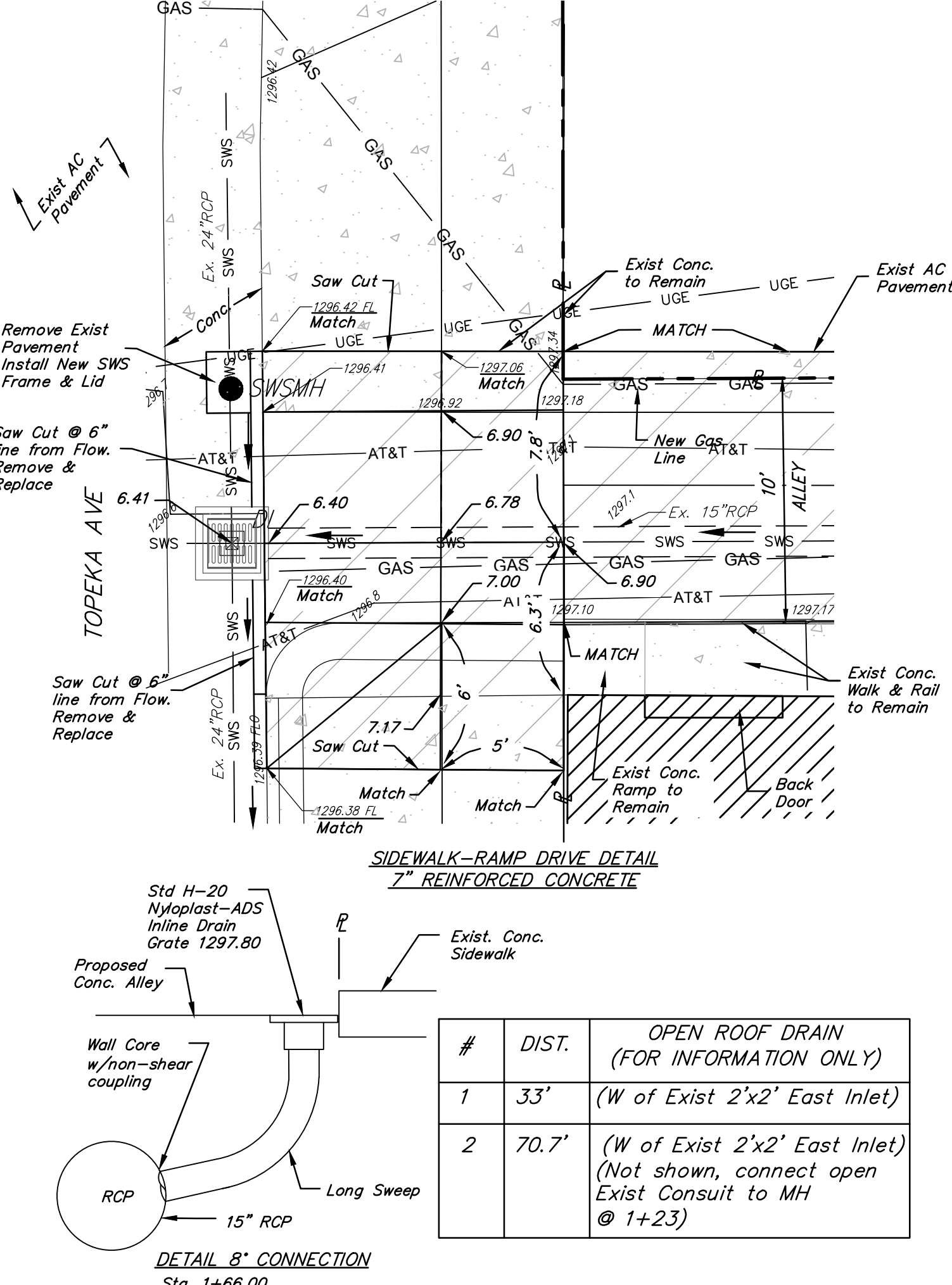
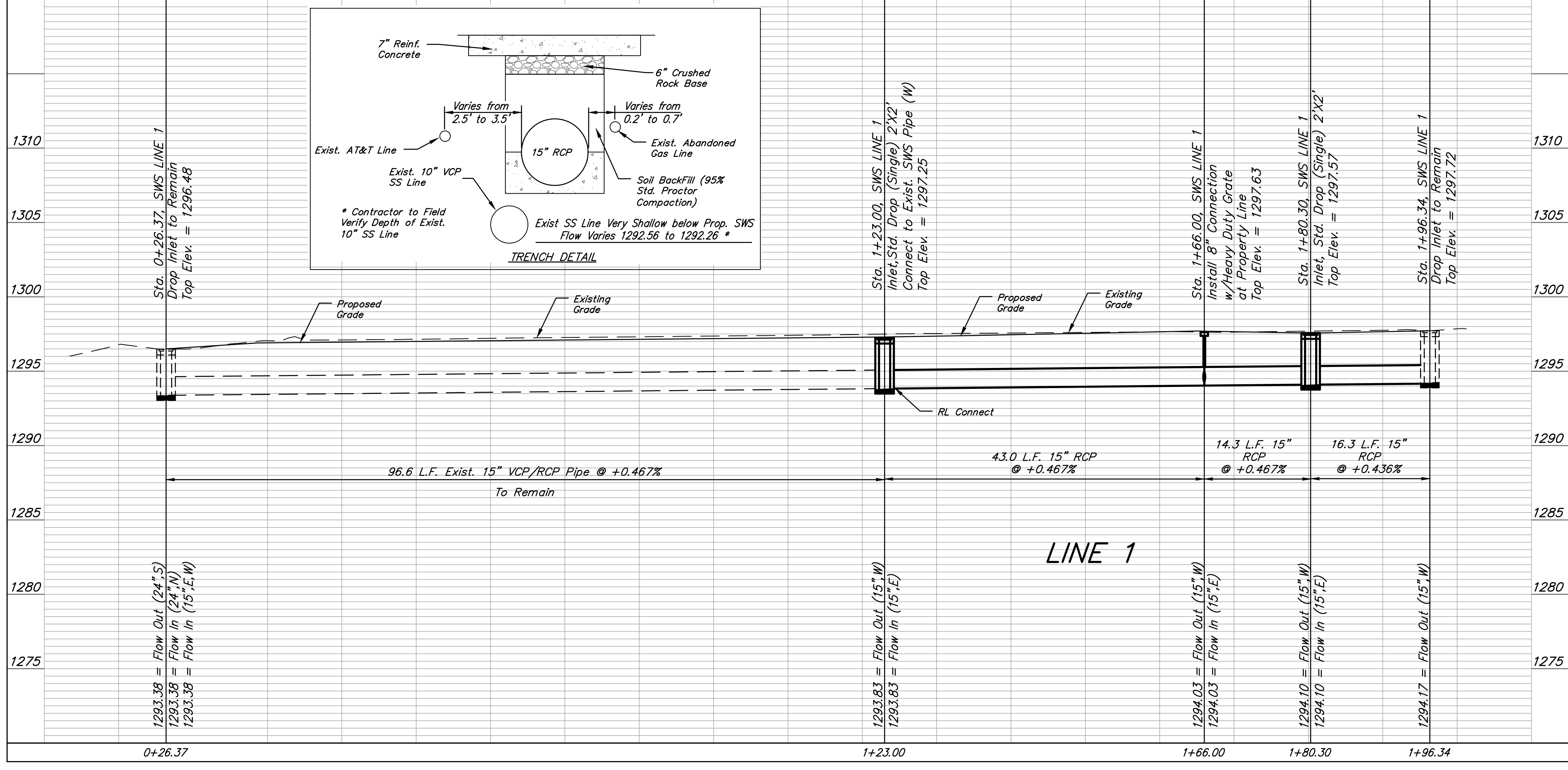


- NOTES:
- ANY CLOSED/CAPPED EXISTING ROOF DRAINS SHALL NOT BE RE-CONNECTED TO NEW 15" RCP SWS PIPE.
  - CONTRACTOR SHALL PROVIDE TEMPORARY TRAFFIC CONTROL AND CONSTRUCTION SEQUENCING AS TO ALLOW FOR PEDESTRIANS AT ALL TIMES TO ACCESS BACKDOOR (MAIN DOOR) OF BUILDING ON LOT 30-32 DOUGLAS AVE FROM WEST PAVEMENT LOT.
  - CONTRACTOR SHALL ERECT TEMPORARY CONSTRUCTION RAILING, PER OSHA STANDARDS, ALONG CONCRETE WALK NEAR MAIN DOOR ACCESS TO BACK OF BUILDING ON LOT 30-32 DOUGLAS AVE.
  - CONTRACTOR SHALL ERECT TEMPORARY TRAFFIC CONTROL, SUCH AS TYPE III BARRICADES AND DRUMS, ALONG PERIMETER OF EXISTING NORTH PARKING LOT AND ALLEY. CONTRACTOR SHALL ERECT TYPE III BARRICADES ON EXISTING SOUTH PARKING LOT BETWEEN THE TWO EXISTING BUILDINGS.
  - STORM WATER PIPE (RCP) SHALL BE BEDDED WITH TYPE 2 PIPE BEDDING MATERIAL (SAND-GRAVEL MIX CONFORMING TO KDOT STANDARD SPECIFICATIONS FOR TYPE UD-2 UNDERDRAIN AGGREGATE). TYPE 2 MATERIAL SHALL BE PLACED FROM 6" BELOW THE PIPE EXTENDING UP TO A LEVEL EQUAL TO THE MIDDLE OF THE PIPE. REMAINING BACKFILL MATERIAL MAY BE SOIL WITHOUT STONES LARGER THAN 2", COMPACTED TO 95% MINIMUM DENSITY, AS DETERMINED BY STANDARD PROCTOR. (AASHTO METHOD T99).
  - CONTRACTOR SHALL PROVIDE AN APPROVED COW PC CONCRETE PAVEMENT MIX FOR ALLEY, DRIVE APPROACH PER SECTION 406 IN CITY OF WICHITA'S STANDARD SPECIFICATIONS.
  - A LARGE VOID EXISTS BELOW CONCRETE WALK ALONG BUILDING NEAR STA. 1+66 RT. CONTRACTOR SHALL PROVIDE CUSTOM FIT, STAY-IN-PLACE FORMS BELOW WALK TO FORM EDGE OF PROPOSED 6" ROCK BASE AND ALLEY PC CONCRETE PAVEMENT. COST OF EXTRA FORMING WORK SHALL BE SUBSIDIARY TO PAY ITEM: CONCR. PAVEMENT, 7" (REINF.) - SY.

- HP HIGH POINT IN PAVEMENT
- PAVEMENT REMOVAL & REPLACEMENT
- EXISTING BUILDING
- EXISTING PC CONCRETE PAVEMENT



BID ITEM	QUANTITY	UNITS
Inlet, Std. Drop (Single) 2'x2'	2	EA
H-20 Nyoplast-ADS, Inline Drain Grate	1	EA
Pipe, SWS PVC (8" W/E)	0	EA
Pipe, SWS RCP (15")	74	LF
Pipe Removed and Replaced (12" & 15")	74	LF
Pavement Removed	190	SY
Conc. Pavement, 7" (Reinf.)	190	SY
6" Rock Base (Reinf.)	190	SY
Site Clearing	1	LS
Site Restoration	1	LS
Traffic Control	1	LS



#	DIST.	OPEN ROOF DRAIN (FOR INFORMATION ONLY)
1	33'	(W of Exist 2'x2' East Inlet)
2	70.7'	(W of Exist 2'x2' East Inlet) (Not shown, connect open Exist Consult to MH @ 1+23)

**BAUGHMAN COMPANY**

315 Ellis St.  
Wichita, KS 67211  
316-262-7271  
BaughmanCo.com

ONCALL STORM SEWER & ALLEY IMPROVEMENTS

**SWS LINE 1**

STORMWATER SEWER IMPROVEMENTS

PROJECT NUMBER:  
21-08-E989

DESIGN: NBW DRAWN: JSB

DATE: January 26, 2022

SHEET OF  
**2 4**

File: E:\Projects\City Storm Sewer Replacement\Phase 1\PPD\Topeka\_PP0.dwg