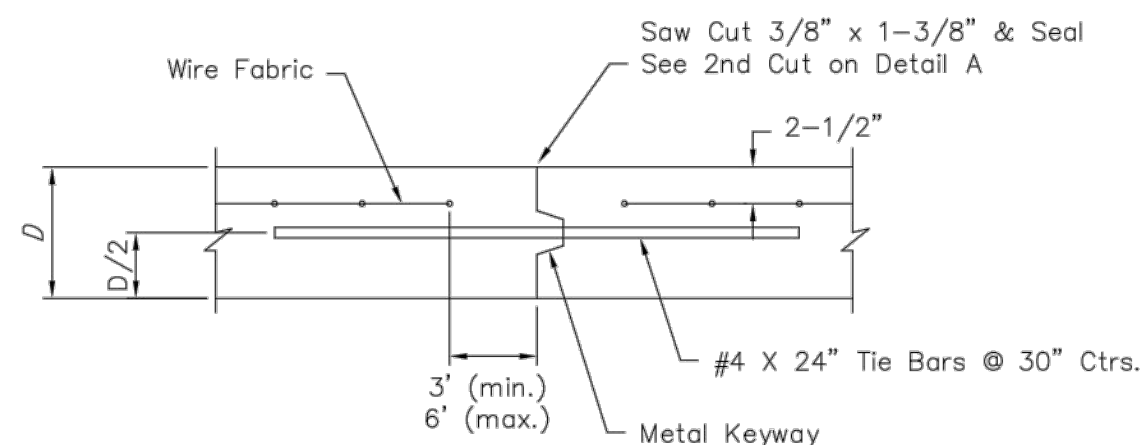
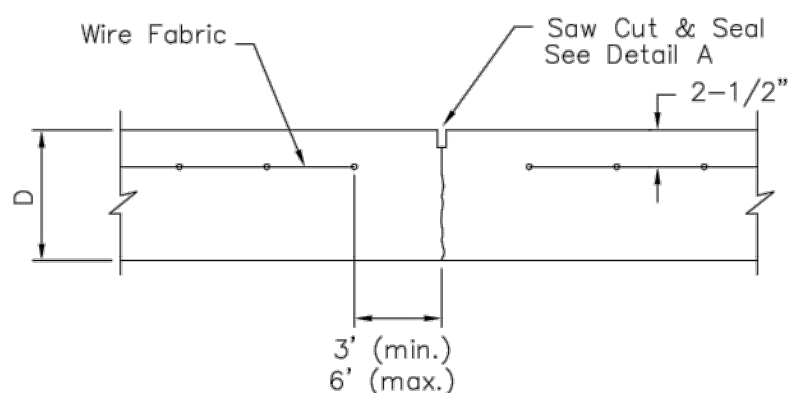


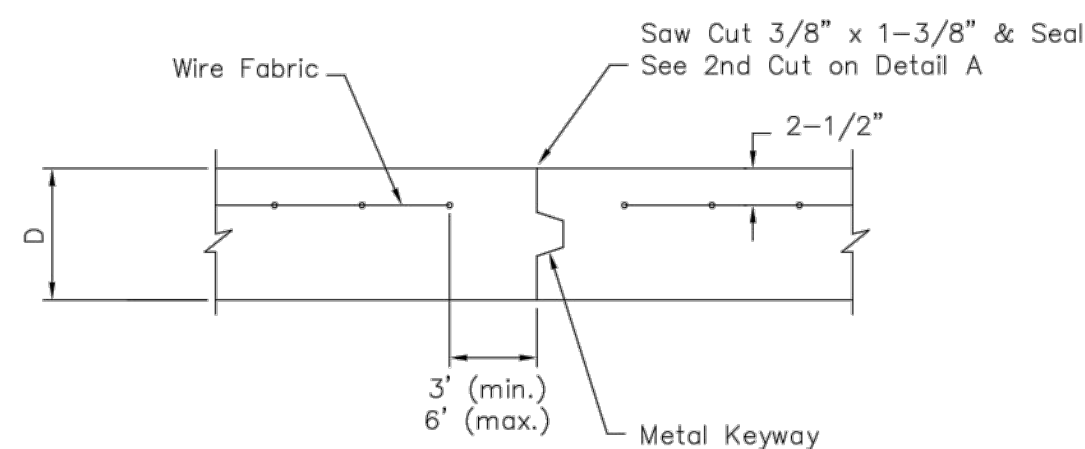
LONGITUDINAL JOINT DETAIL (L.J.)



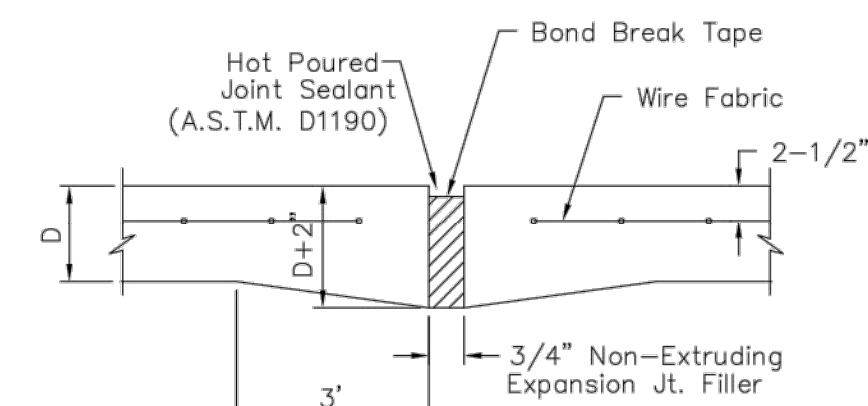
OPT. LONGITUDINAL JOINT DETAIL (L.J.)



CONTRACTION JOINT DETAIL (C.J.)

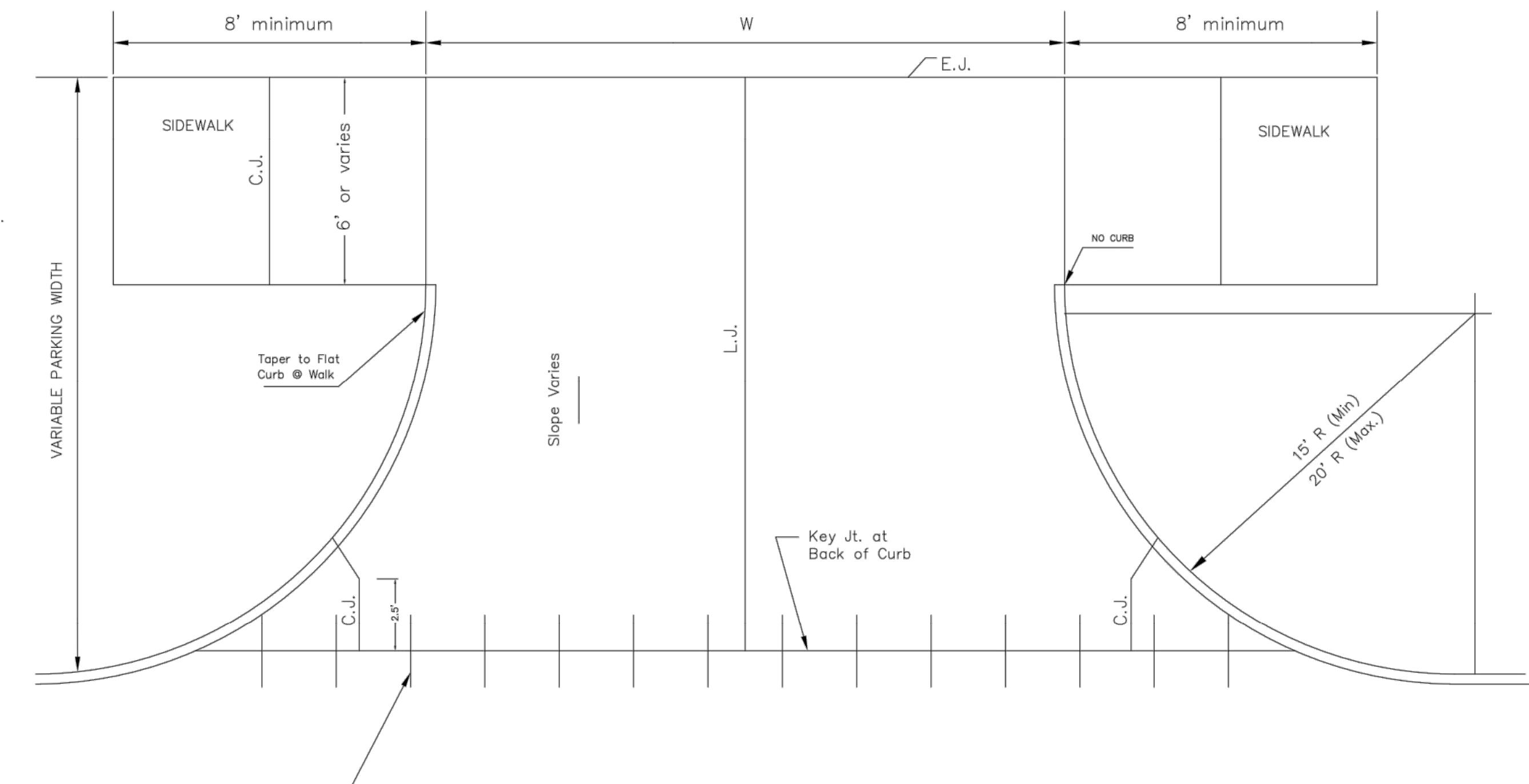


OPTIONAL CONTRACTION JOINT



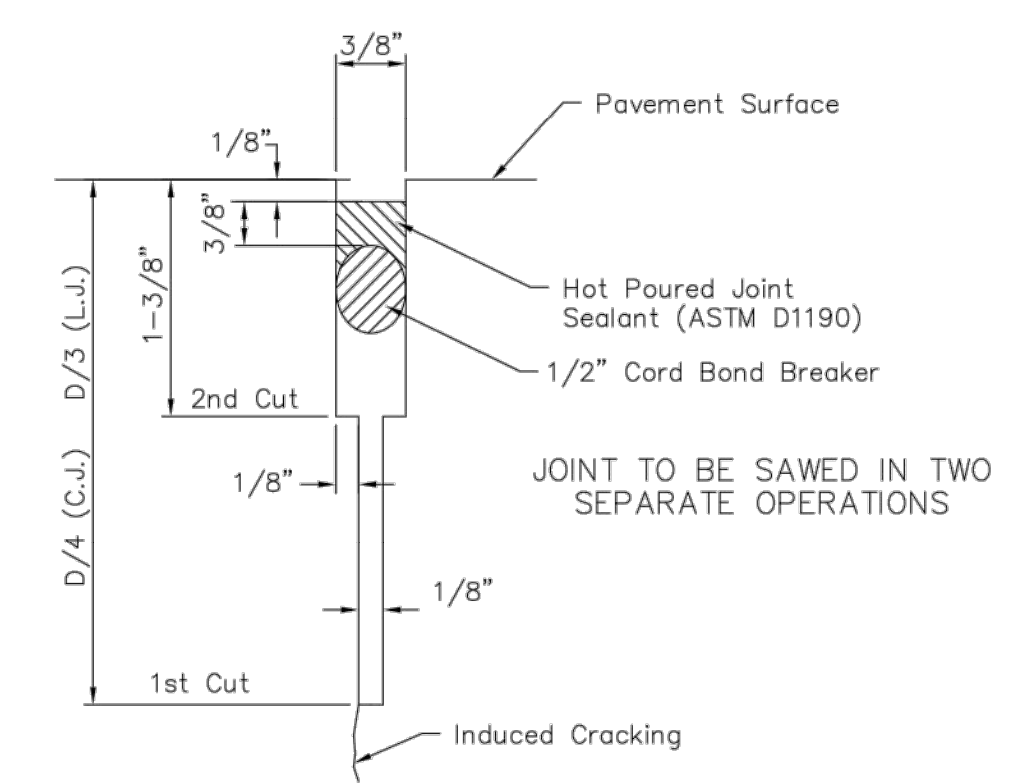
EXPANSION (ISOLATION) JOINT

NOTE: Extra Thickness to be Subsidiary to Price of Square Yards Pavement

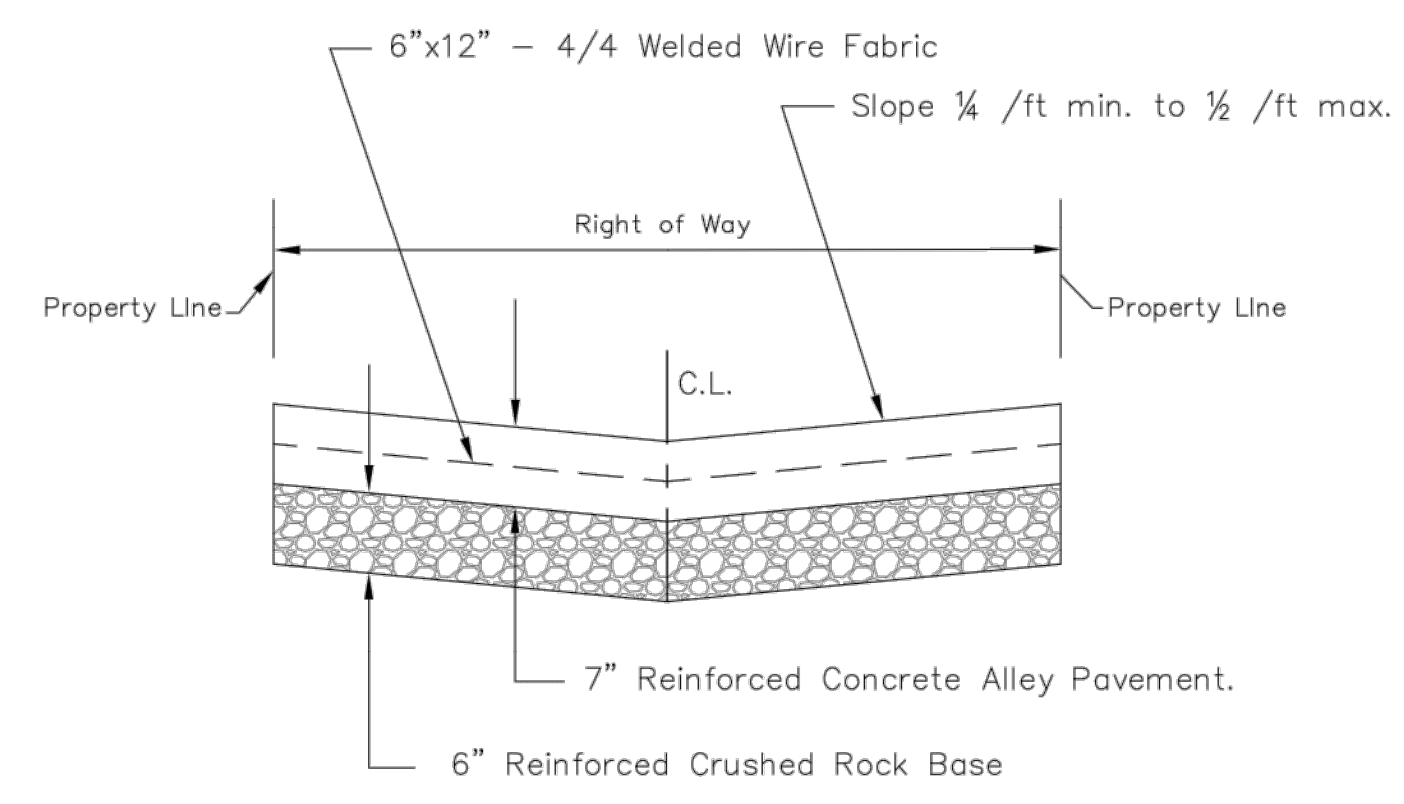


Use Ramp-Type Approach when distance between fc. wk. & bk. cb. is 8'-0" or less. Where parking width is 8'-0" or less ramp shall be constructed full width.

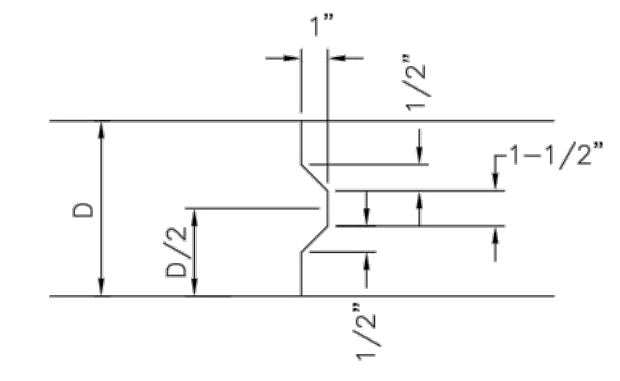
ALLEY APPROACH DETAIL



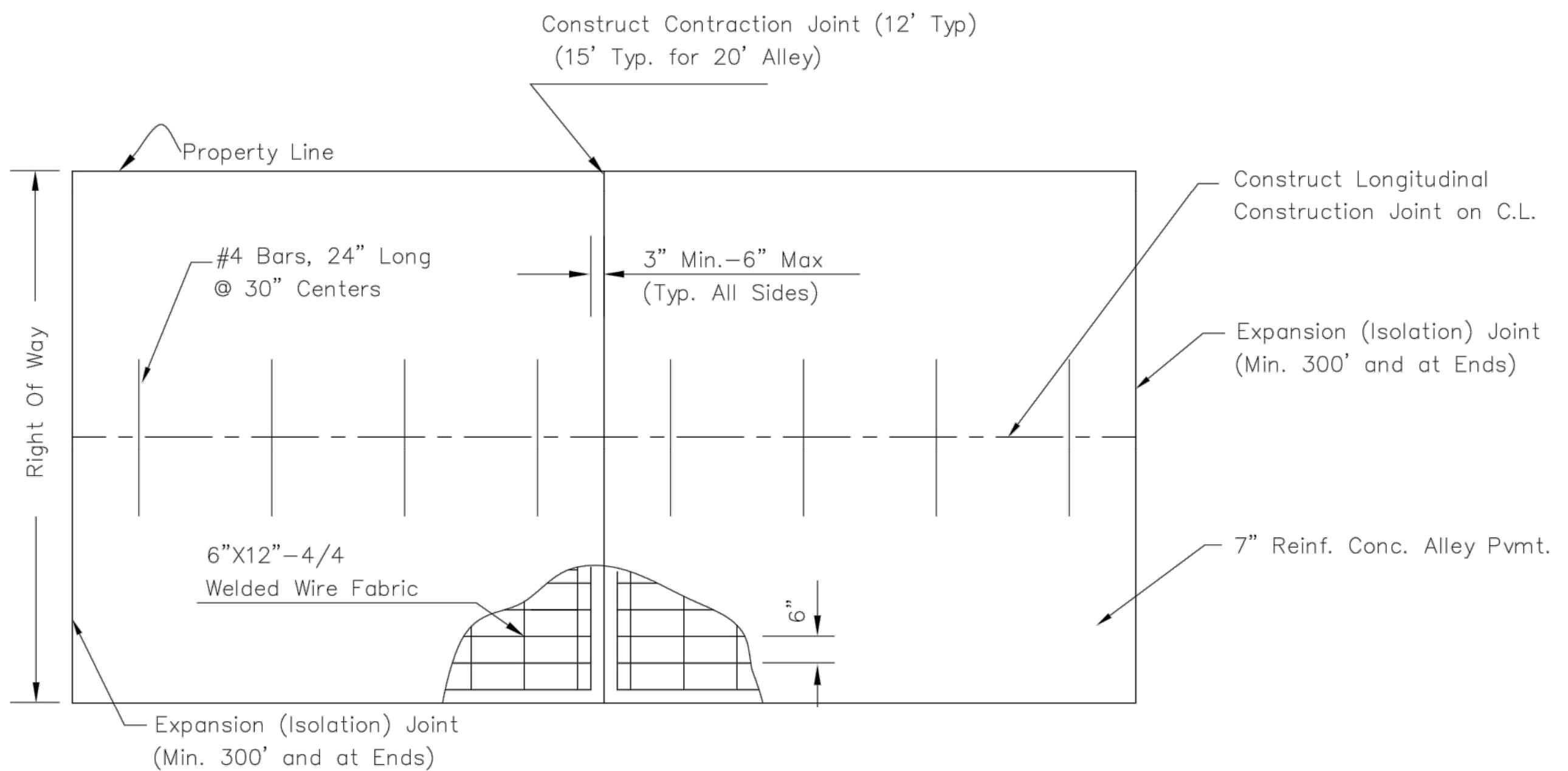
SAW JOINT DETAIL (Detail A)



TYPICAL PAVEMENT SECTION



KEYWAY DETAIL



SLAB REINFORCEMENT DETAIL

REVISED: NOVEMBER 2015



REINFORCED CONCRETE ALLEY PAVING DETAIL		
CITY ENGINEER GARY JANZEN, P.E.		
PROJECT NUMBER	OCA NUMBER	DATE
CITY ENGINEER'S OFFICE	SHEET	
CITY HALL - SEVENTH FLOOR 455 NORTH MAIN STREET WICHITA, KANSAS 67202-1620 (316) 268-4501		

315 Ellis St.
Wichita, KS 67211
316-262-7271
BaughmanCo.com

ONCALL STORM SEWER & ALLEY IMPROVEMENTS
Pavement Details

STORMWATER SEWER IMPROVEMENTS
PROJECT NUMBER:
21-08-E989
DESIGN: NBW DRAWN: JSB
DATE: November 17, 2021

SHEET **3** OF **4**

PV-108

File: E:\Projects\City Storm Sewer Replacement_21-08-E989\Engineering\Phase 1\PPD\Topekka_PP.Dwg