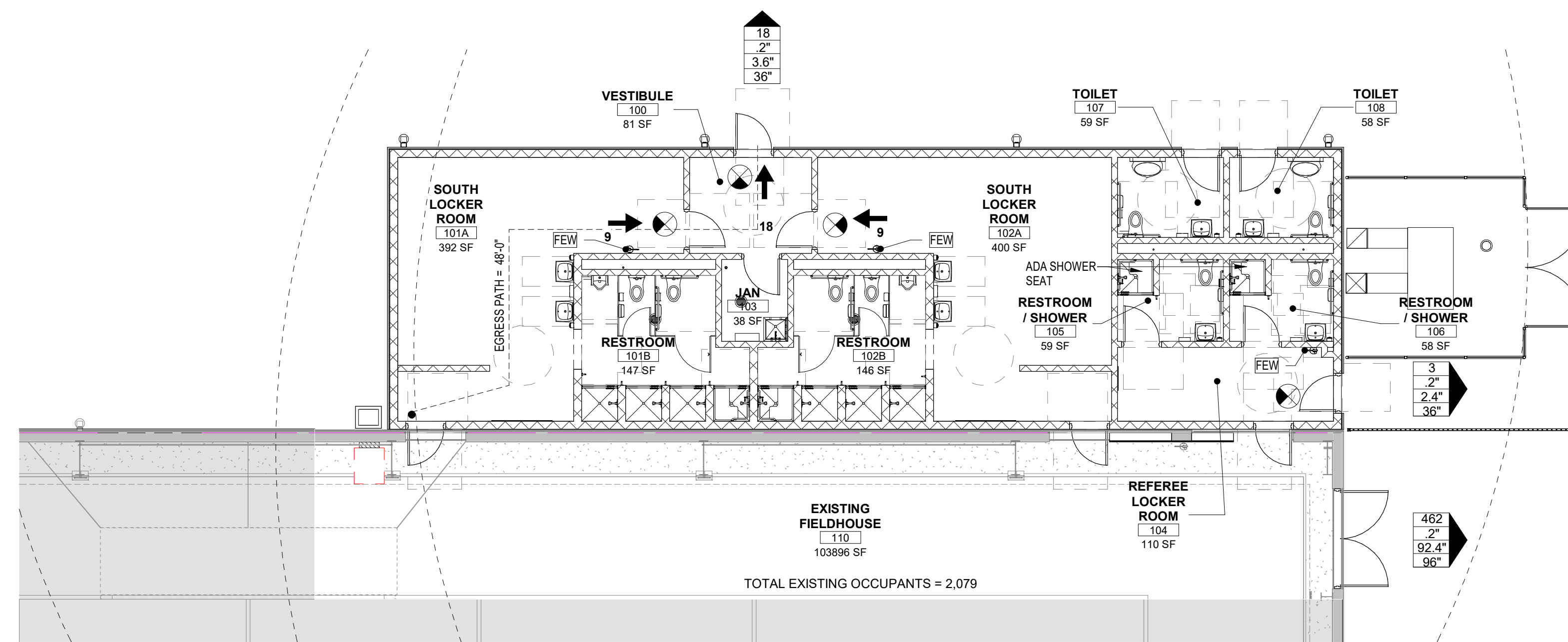


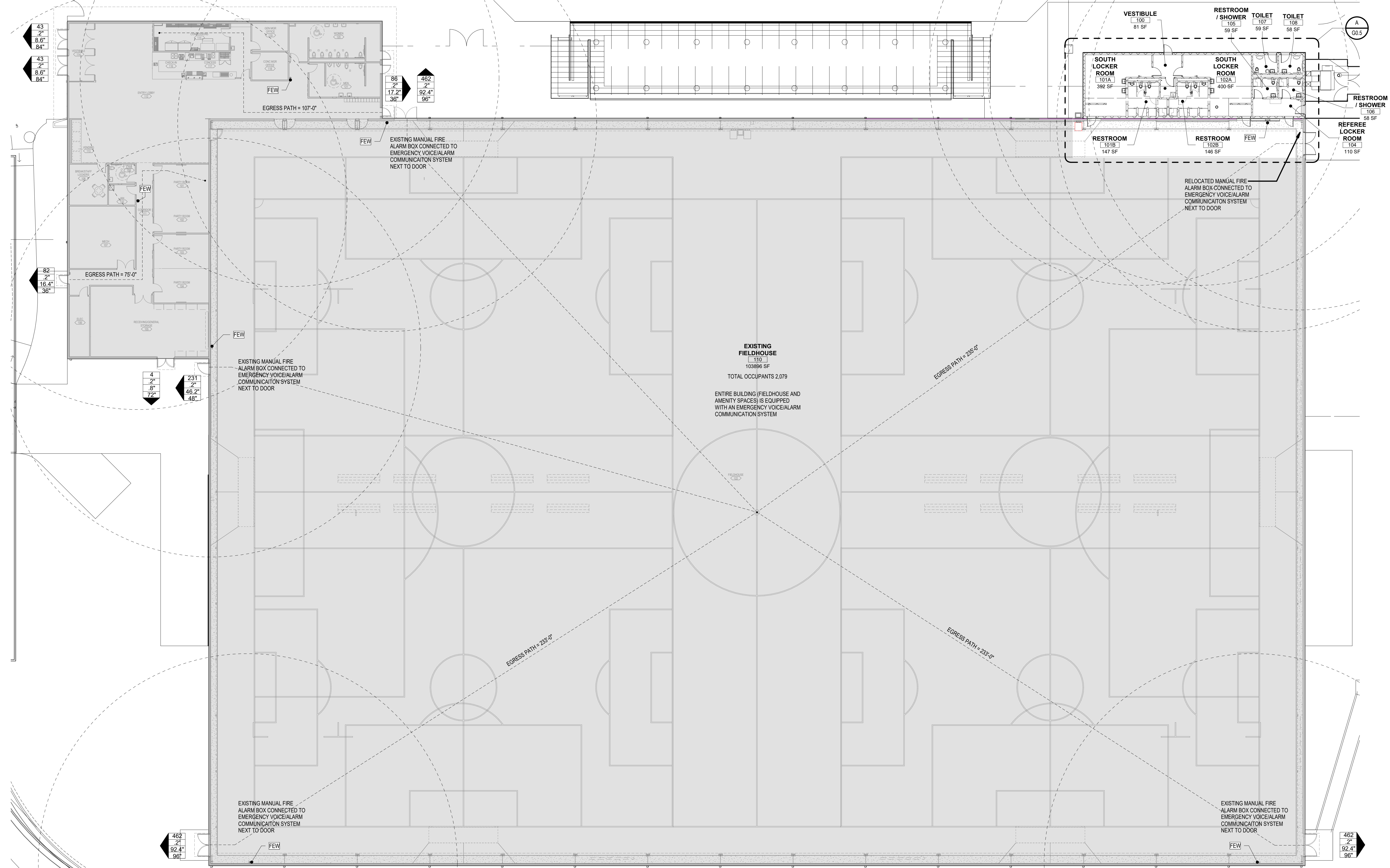
11/24/2021 9:16:35 AM

BLM 30010108821003_StrykerRemoval0108821003_A_Stryker Addition_V01.rvt



A SOUTH LOCKER ROOM CODE PLAN
 1/8" = 1'-0"
 NEW ADDITION SHALL BE SPRINKLERED

CODE FOOTPRINT GRAPHIC LEGEND		
SYMBOL	DESCRIPTION	PROTECTION ELEMENTS
- - - -	NOT IN SCOPE OF WORK	
— · — · —	2 HOUR FIRE BARRIER	2-HOUR FIRE BARRIER WALL CONSTRUCTION, 1-1/2-HOUR RATED DOOR ASSEMBLY, FIRE DAMPERS
-----	DISTANCE BETWEEN EXITS	ALL EXISTING TO REMAIN
→	PATH OF EGRESS (TRAVEL DISTANCE)	ALL EXISTING TO REMAIN
⊙	FIRE EXTINGUISHER SPACING (SHOW RADIUS)	
↑	REQUIRED EXIT OR EXIT ACCESS - INTERIOR (ASSEMBLY OVER 50 & EXITS FROM FLOORS)	
FAAP	FIRE ALARM ANNUNCIATOR PANEL	
FACP	FIRE ALARM CONTROL PANEL	
● FEW	FIRE EXTINGUISHER WALL MOUNTED	
Y	FIRE DEPARTMENT CONNECTION (FDC)	
⊕	PUBLIC FIRE HYDRANT	
⬆	DOOR WIDTH TAG	
⬆	# OF OCCUPANTS	
⬆	EXITING CAPACITY	
⬆	EXIT WIDTH REQ'D	
⬆	CLEAR EXIT WIDTH PROVIDED	



B OVERALL SOUTH LOCKER ROOM CODE PLAN
 1/16" = 1'-0"



Wichita, KS - 316.684.9600

PHASE 8 INDOOR FACILITY & STADIUM IMPROVEMENTS
STRYKER SPORTS
 WICHITA, KANSAS



©2021 MKEC Engineering
 All Rights Reserved
 www.mkec.com
 These drawings and their contents, including, but not limited to, all concepts, designs, & data are the exclusive property of MKEC Engineering (MKEC), and may not be used or reproduced in any way without the express consent of MKEC.

SOUTH LOCKER ROOM CODE PLAN

PROJECT NO.	01088R21003	
DATE	11/23/2021	
SCALE	AS NOTED	
DESIGNED	DRAWN	CHECKED
MH	SS	MH
ISSUED FOR CONSTRUCTION	11-24-21	
NO.	REVISION	DATE
SHEET NO.		
G0.5		

