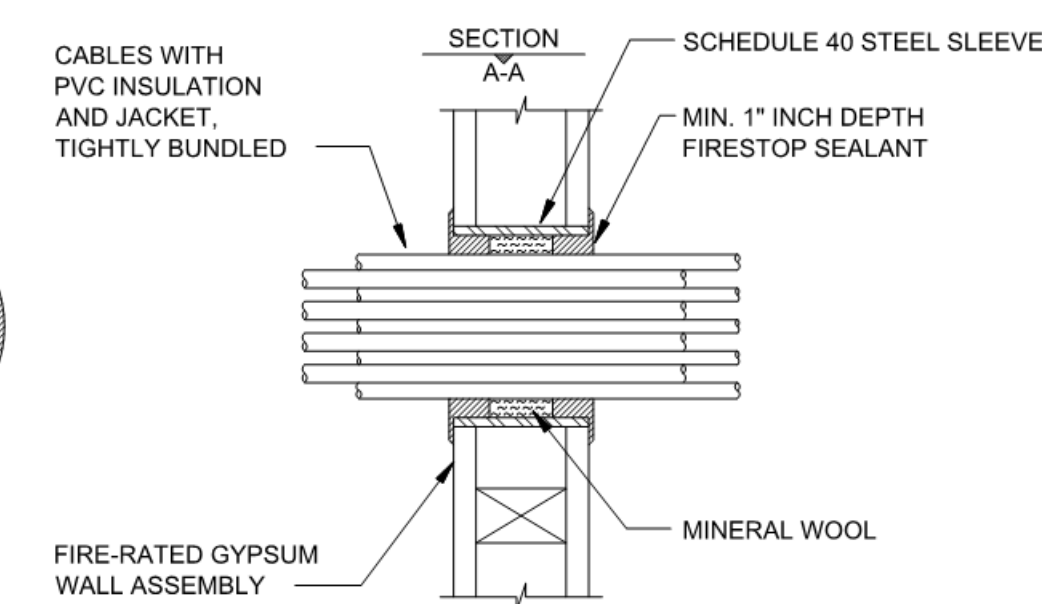
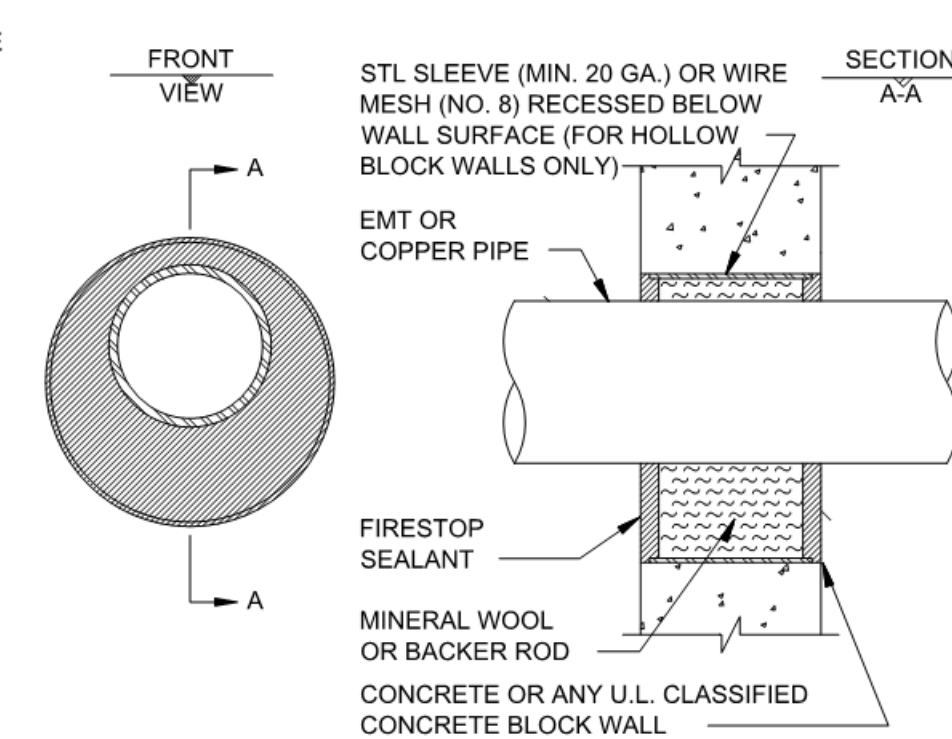


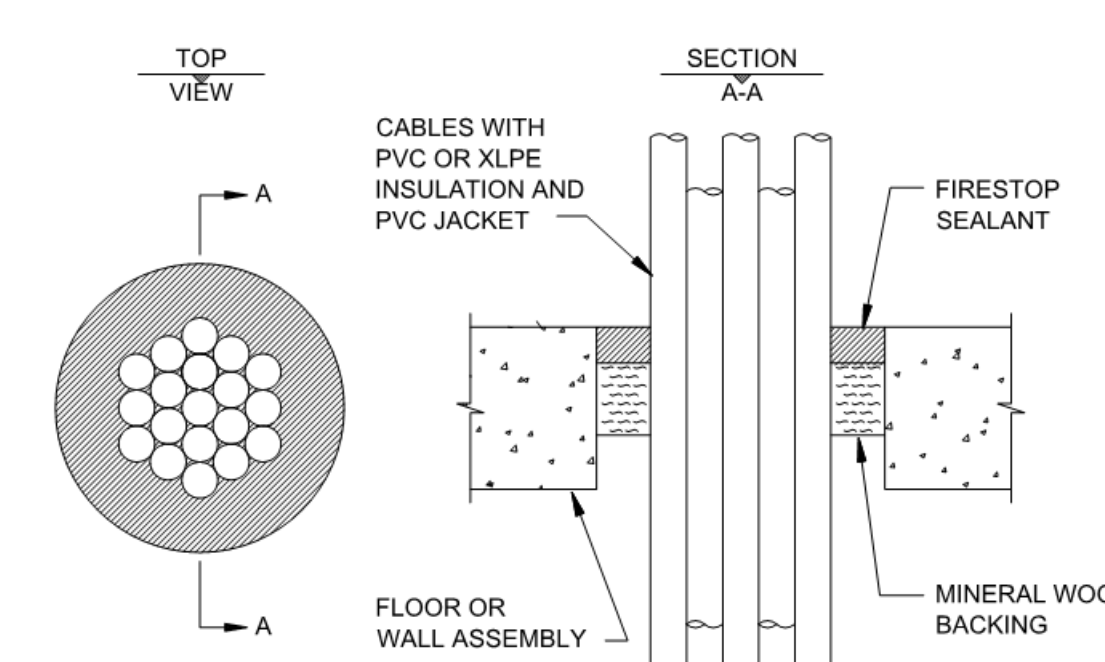
1 TOP OF DRYWALL PART.
N.T.S.



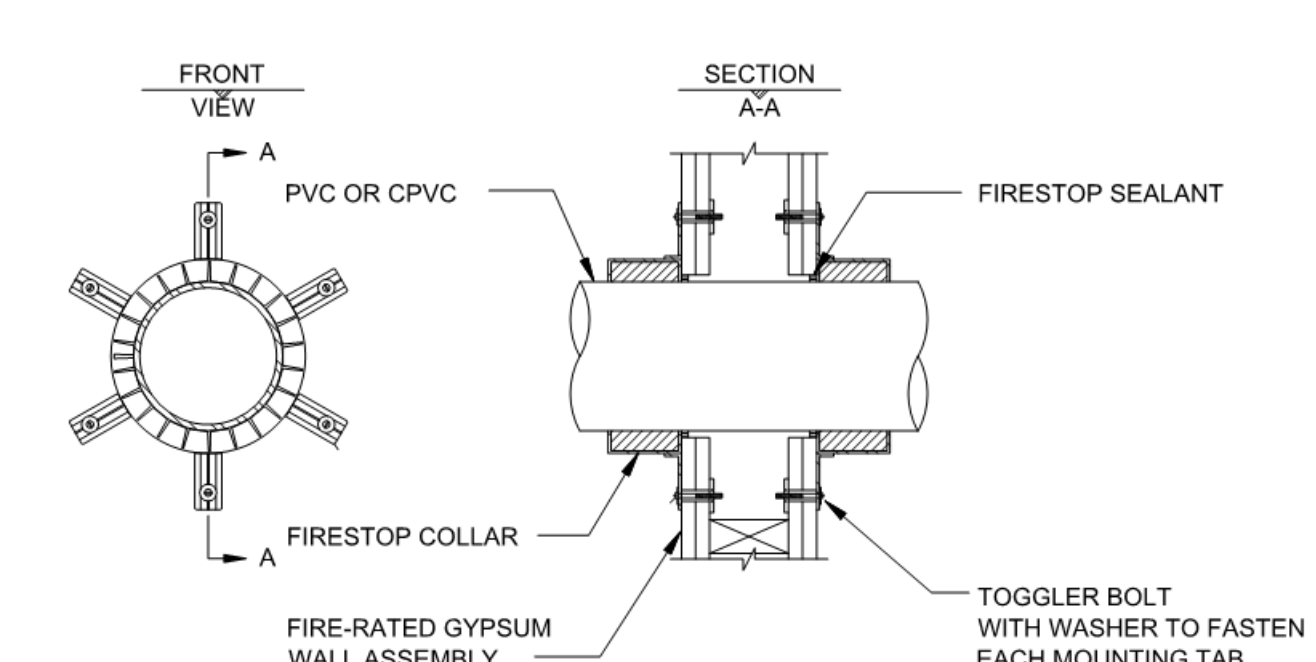
2 CABLE BUNDLE THRU DRYWALL
N.T.S.



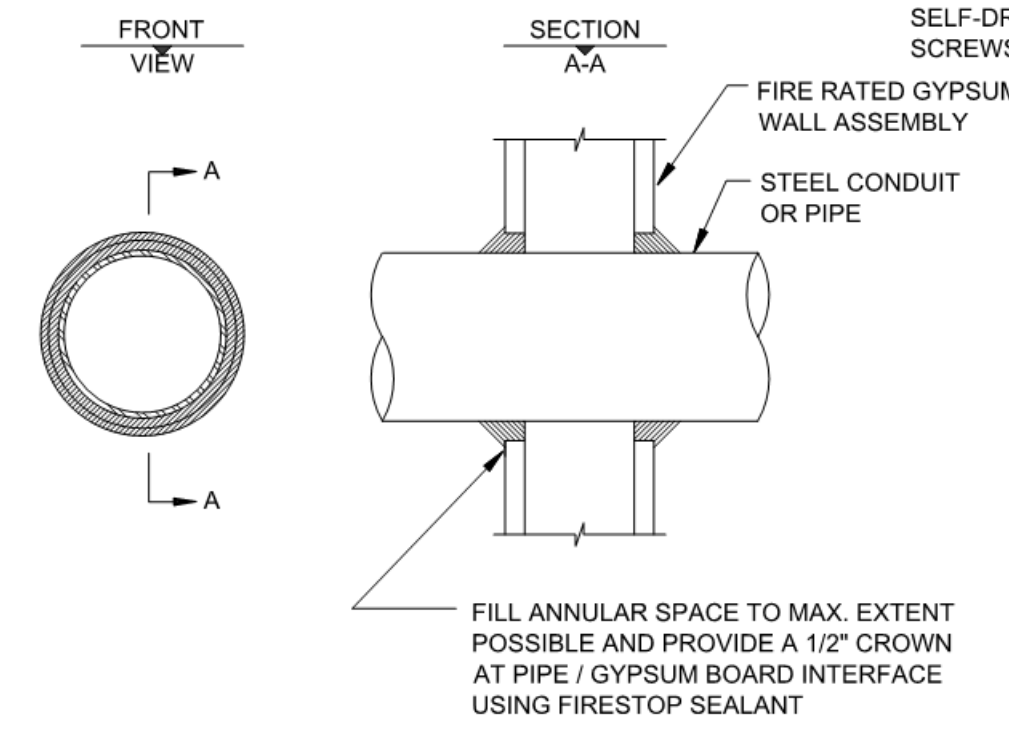
3 METAL PIPE THRU CONC./CMU
N.T.S.



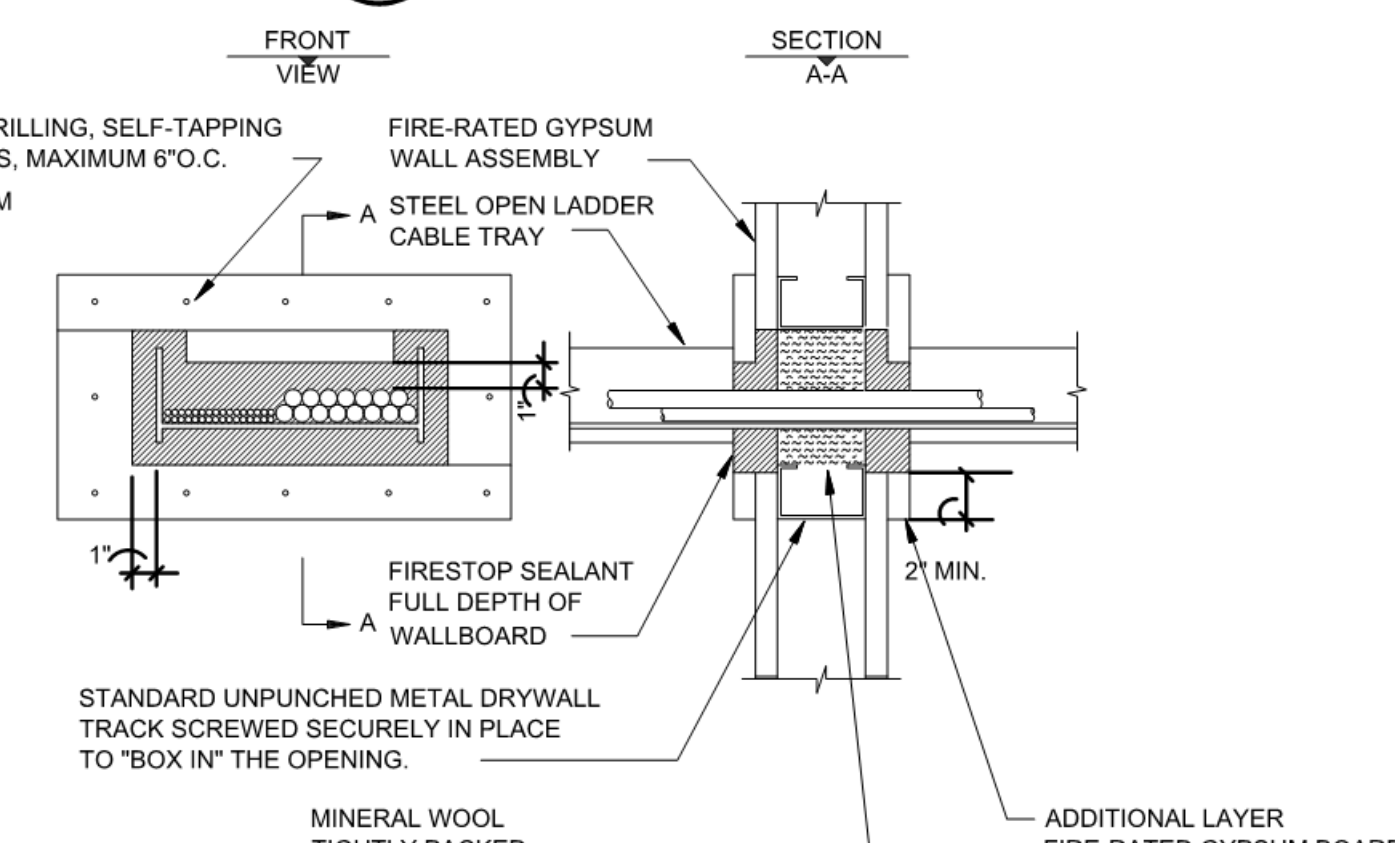
4 CABLE BUNDLE THRU CONC./CMU
N.T.S.



5 PLASTIC PIPE THRU DRYWALL
N.T.S.



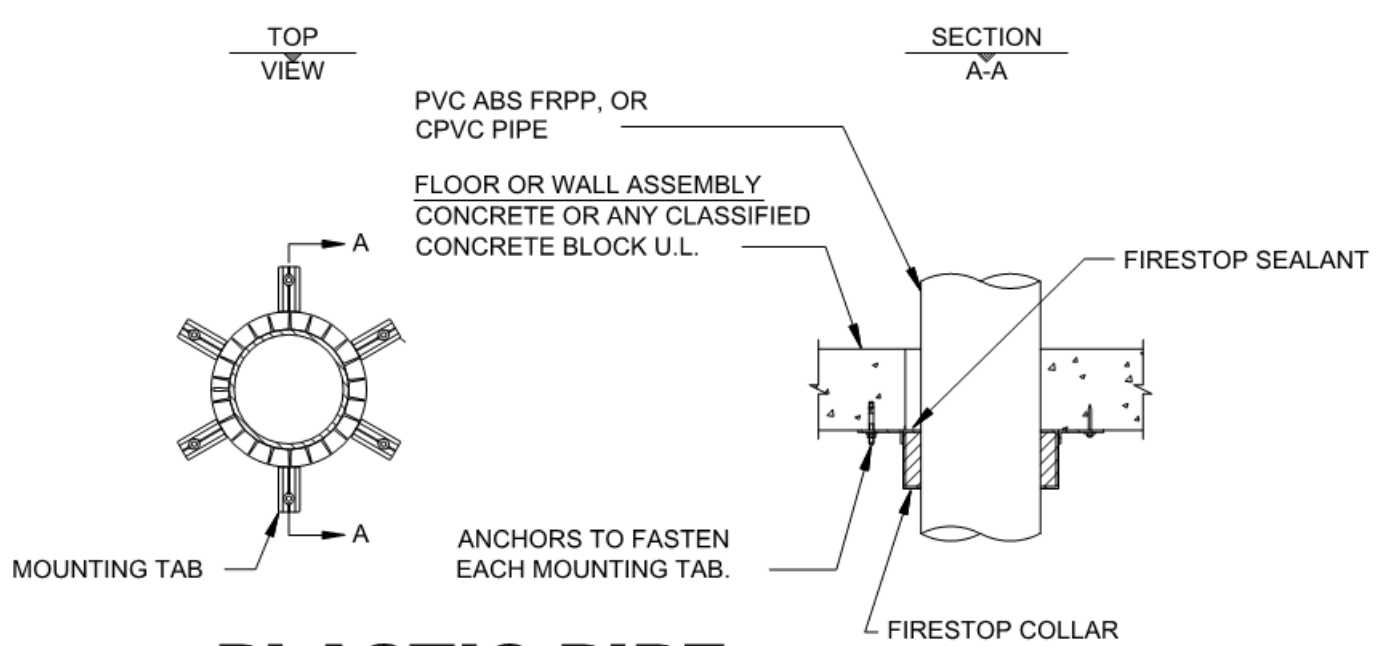
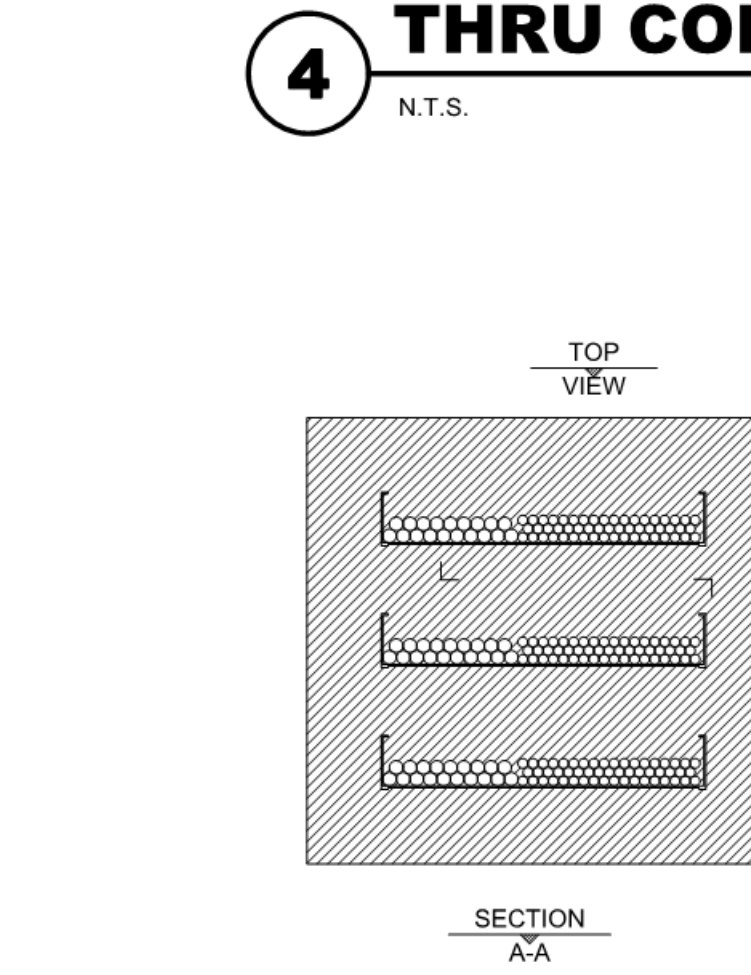
6 MTL PIPE THRU DRYWALL
N.T.S.



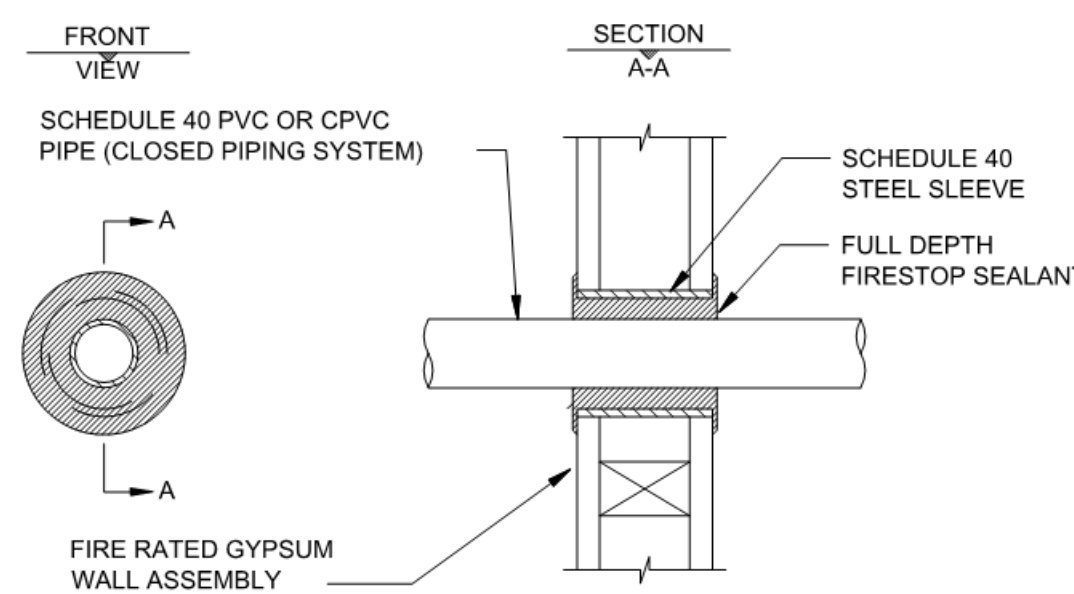
7 CABLE TRAY THRU DRYWALL
N.T.S.

FIRESTOPPING NOTES

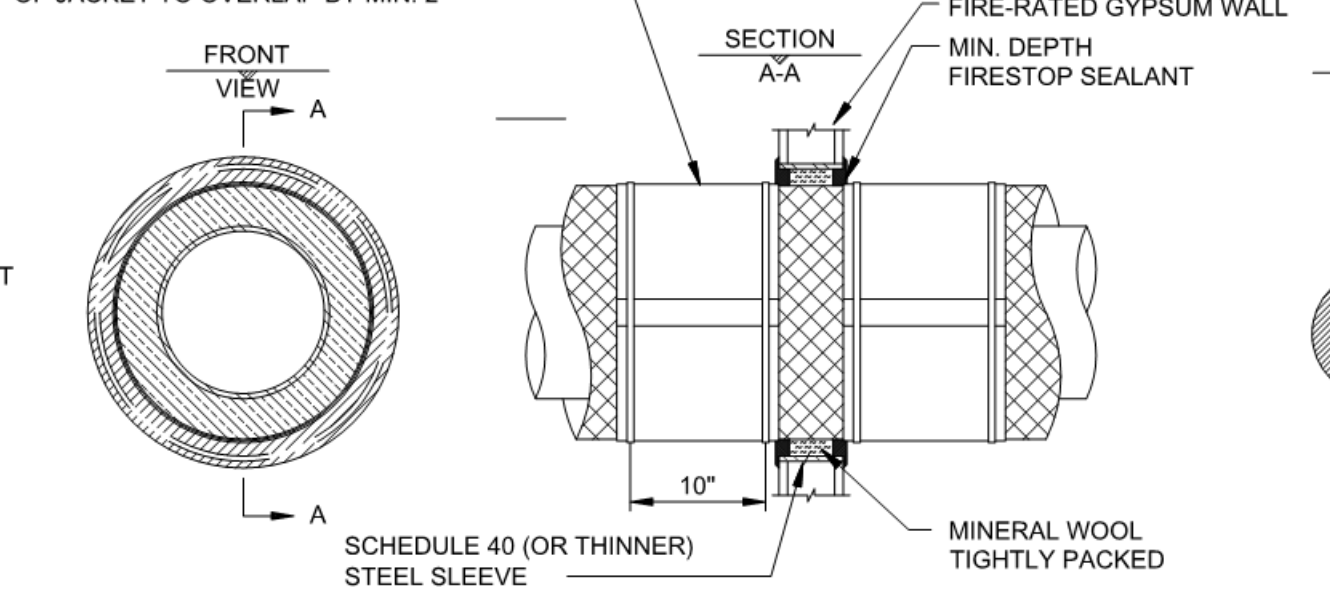
1. LOCATION OF FIRE & SMOKE WALLS, FLOORS & CEILING/ROOFS ARE SHOWN ON THE CODE REFERENCE PLANS, AND NOTED THROUGHOUT THE DRAWINGS.
2. DIAGRAMMATIC LOCATIONS OF PENETRATIONS ARE SHOWN ON THE PLUMBING, FIRE SPRINKLER, MECHANICAL, INSTRUMENTATION, ELECTRICAL, ELECTRONIC SECURITY AND COMMUNICATION DRAWINGS.
3. SEE STRUCTURAL DRAWINGS FOR ADDITIONAL REQUIREMENTS FOR WALL BRACING AND WHERE GROUTING / REINFORCING OCCURS.
4. NOT ALL CONDITIONS ARE SHOWN, THESE DETAILS ARE GENERIC IN NATURE. IN ACCORDANCE WITH SPECIFICATION SECTION 078400, DETAIL DRAWINGS SHALL BE SUBMITTED AS APPROPRIATE FOR FIRE STOPPING MATERIAL PROPOSED FOR EACH TYPE OF PENETRATION.
5. WHERE STRUCTURAL STEEL FRAMING MEMBERS PENETRATE FIRE WALLS, MAINTAIN 2" INCH CLEARANCE AND FILL ANNULAR SPACE WITH SAFING INSULATION.



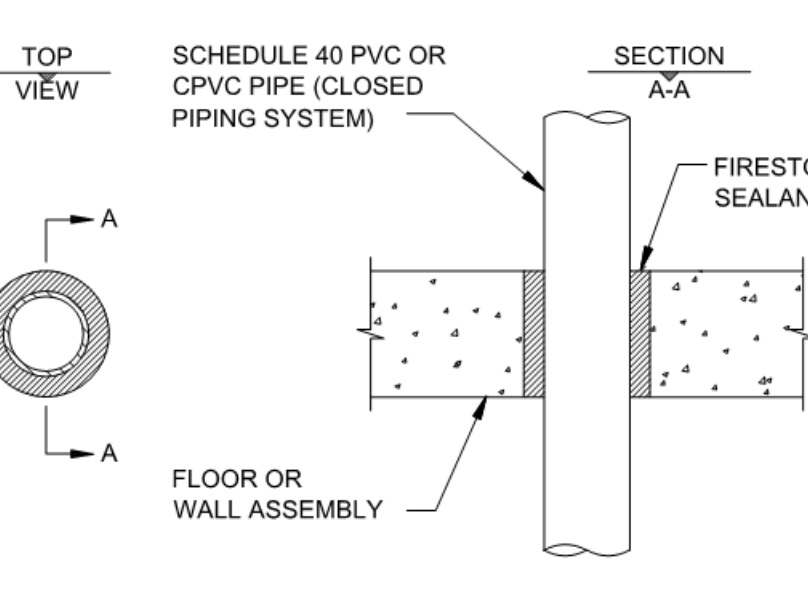
8 PLASTIC PIPE THRU CONC./CMU
N.T.S.



9 PLASTIC PIPE THRU DRYWALL
N.T.S.



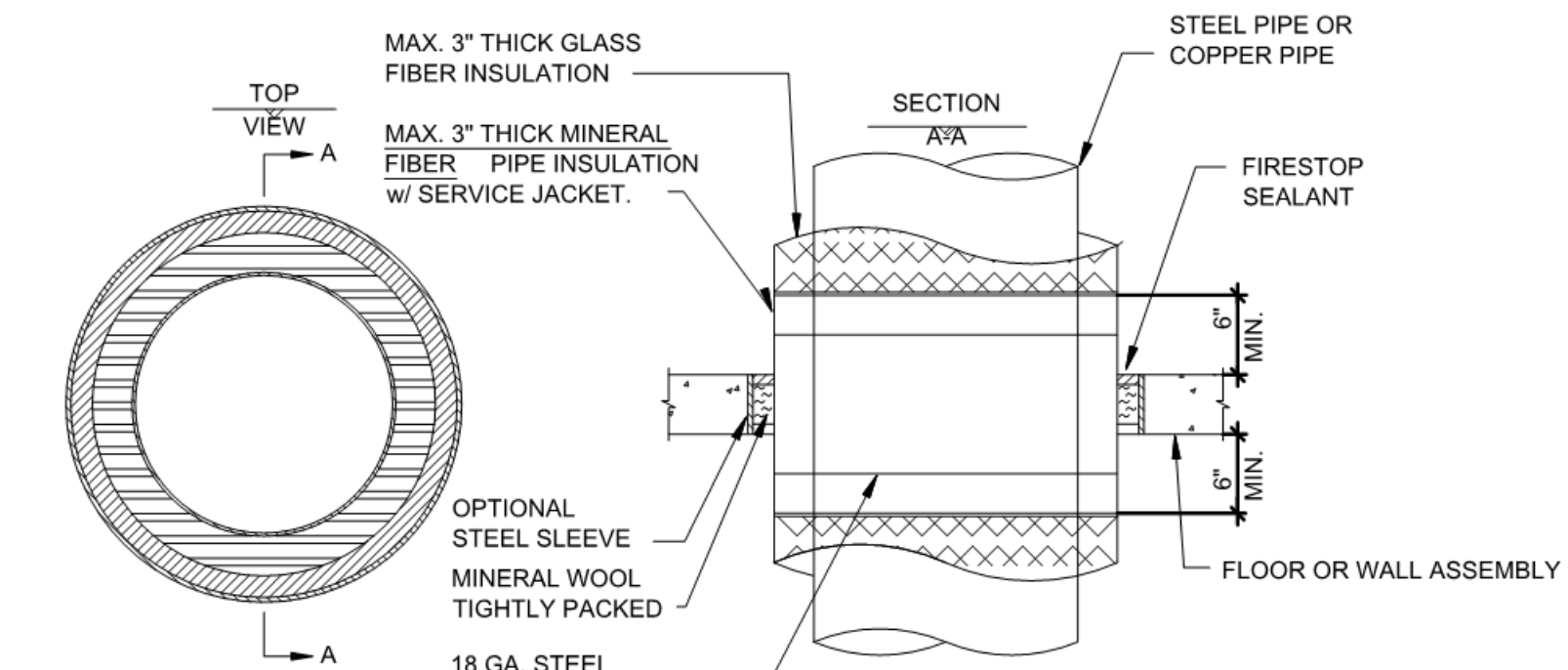
10 INSULATED PIPE THRU DRYWALL
N.T.S.



11 PLASTIC PIPE THRU CONC./CMU
N.T.S.

NOTES:

1. CABLE TRAYS SPACED MIN. 6" INCHES APART AND A MIN. OF 1" INCH FROM THE PERIPHERY OF THE OPENING.
2. MAXIMUM AREA OF OPENING IS .7 SQ. FEET WITH A MAXIMUM DIMENSION OF 32" INCHES.
3. A. FOR STEEL CABLE TRAYS, MAX. AREA OF CABLES SHALL BE 30% OF THE CROSS-SECTIONAL AREA OF THE CABLE TRAY (MAX. 3" CABLE LOADING DEPTH IN TRAY).
B. FOR ALUMINUM CABLE TRAYS, MAX. AREA OF CABLES SHALL BE 20% OF THE CROSS-SECTIONAL AREA OF THE CABLE TRAY.
4. THESE LIMITATIONS VARY WITH MANUFACTURER.



12 INSULATED PIPE THRU CONC./CMU
N.T.S.



©2021 MKEC Engineering All Rights Reserved. www.mkec.com These drawings and their contents, including, but not limited to, all concepts, designs, & ideas are the exclusive property of MKEC Engineering (MKEC), and may not be used or reproduced in any way without the express consent of MKEC.

TYP FIRESTOPPING DETAILS

PROJECT NO.	01088R21003	
DATE	11/23/2021	
SCALE	AS NOTED	
DESIGNED	DRAWN	CHECKED
MH	SS	MH
ISSUED FOR CONSTRUCTION	11-24-21	
NO.	REVISION	DATE

SHEET NO. G0.6

