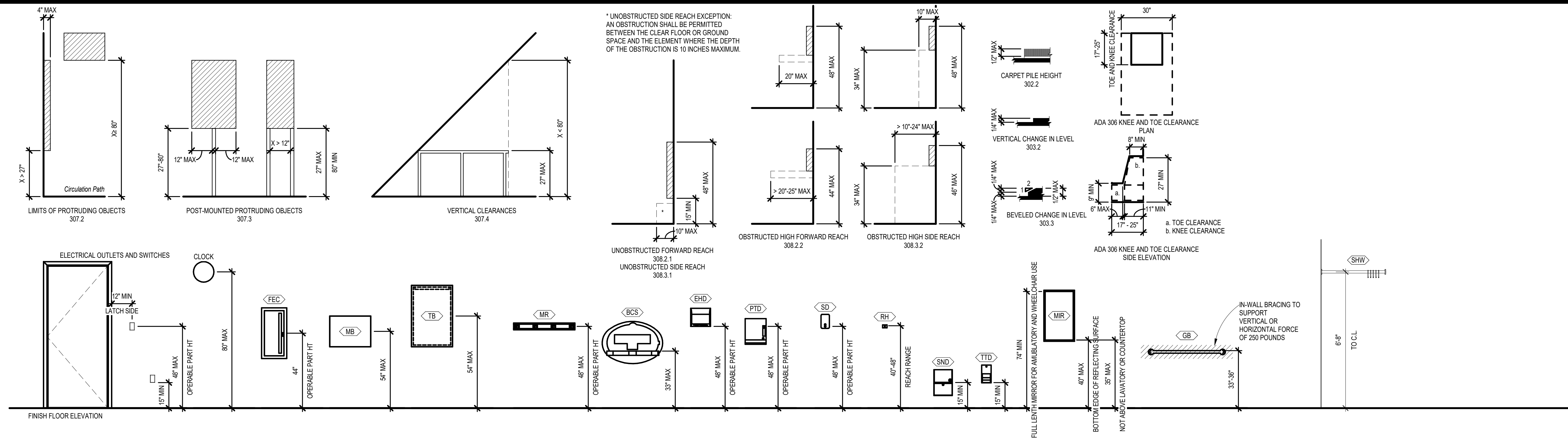
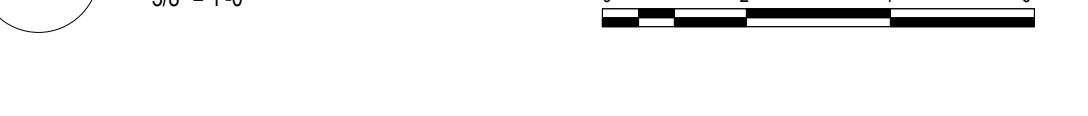


11/24/2021 9:16:37 AM
BLL 300101088R21003_StrykerRemoval01088R21003_A_Stryker Addition_V01.rvt

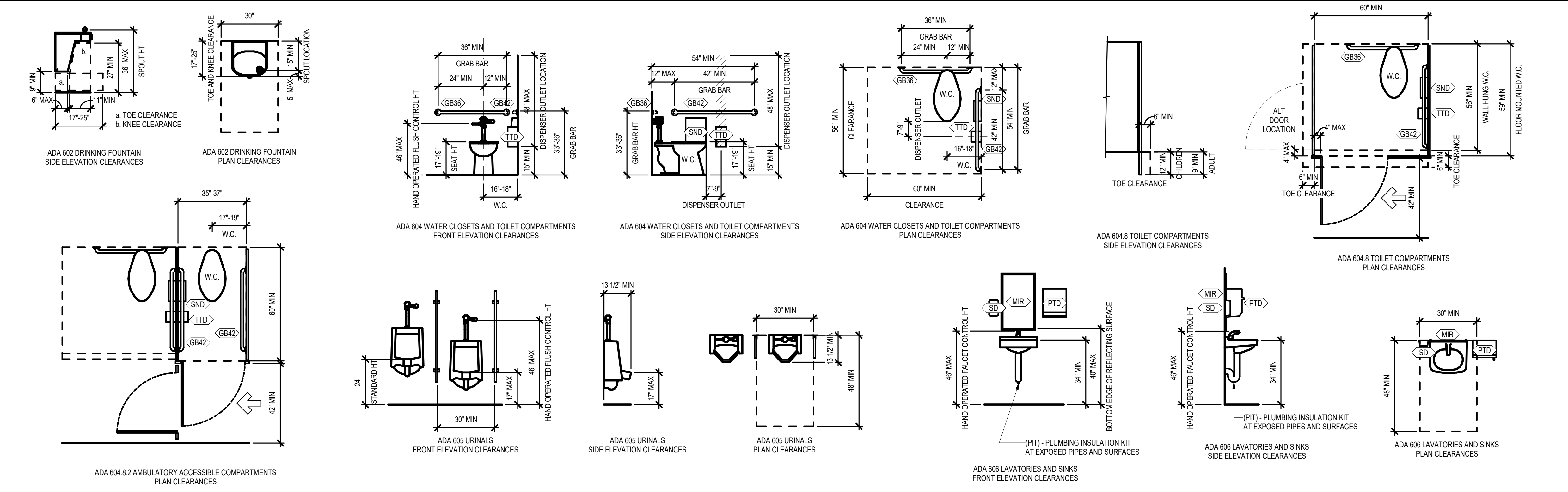
TYPICAL MOUNTING HEIGHTS



ADA - TYPICAL MOUNTING HEIGHTS



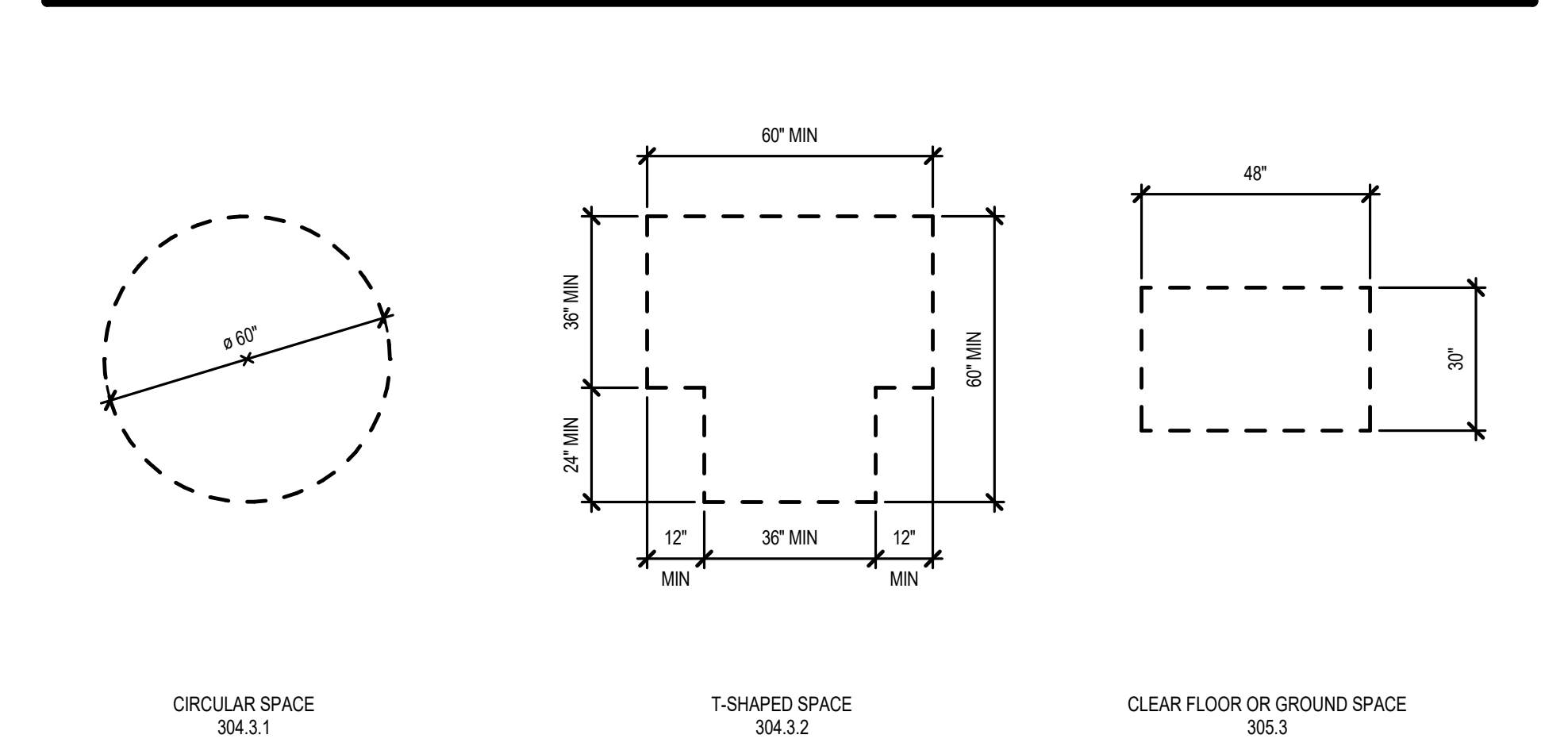
PLUMBING ELEMENTS AND FACILITIES



ADA - PLUMBING ELEMENTS AND FACILITIES



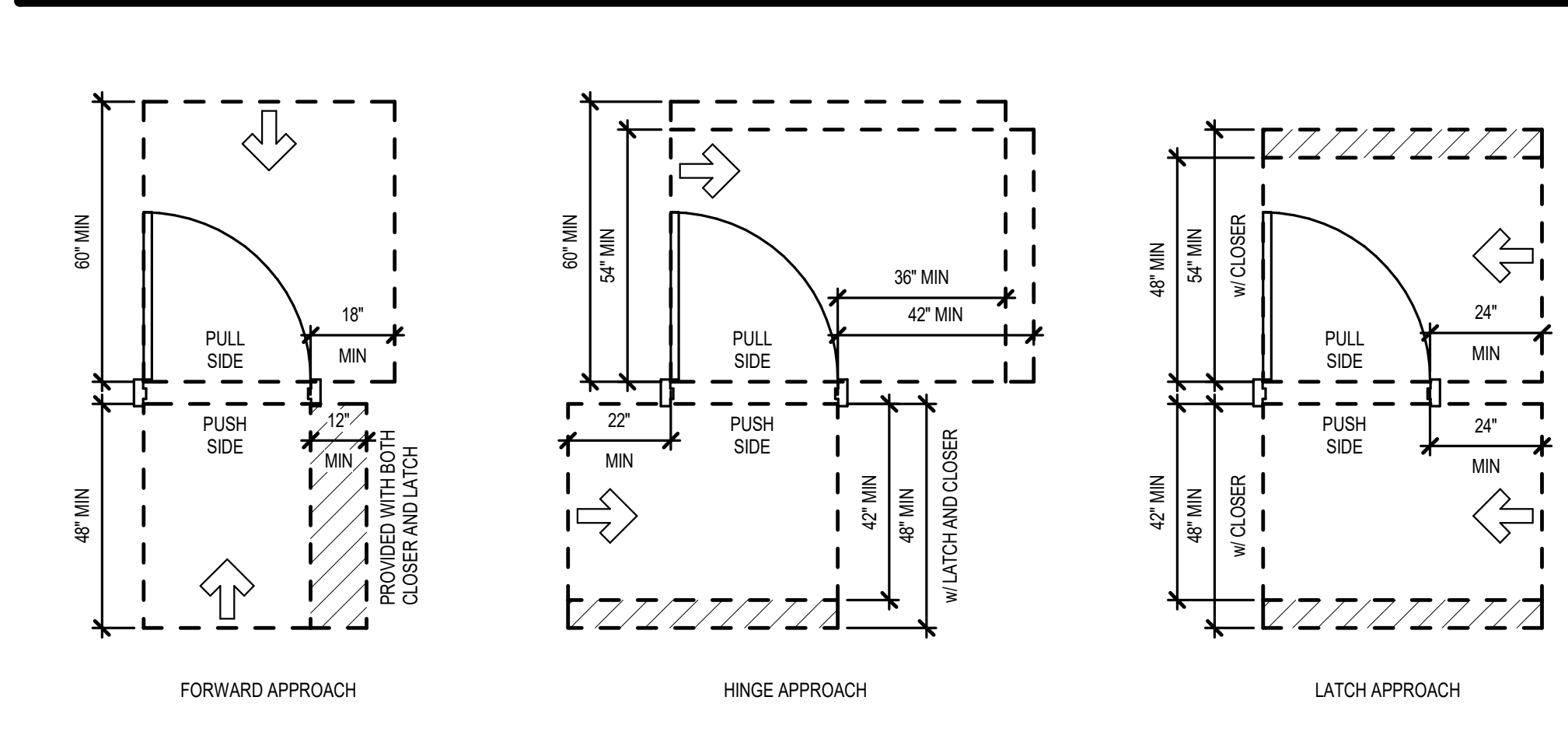
CLEAR FLOOR AND GROUND SPACE



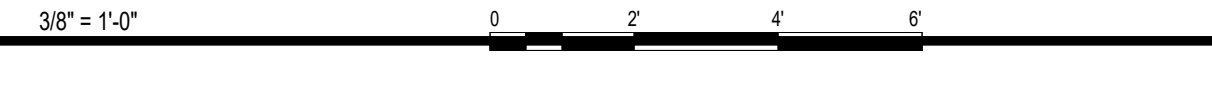
ADA - CLEAR FLOOR AND GROUND SPACE



DOOR MANEUVERING CLEARANCES



ADA - DOOR MANEUVERING CLEARANCES



SPECIALTIES/ACCESSORIES SCHEDULE

| MARK | ITEM | EQUIPMENT TAG |
|------|--------------------------------|--------------------------|
| FEC | FIRE EXTINGUISHER CABINET | |
| GB36 | GRAB BAR, 36" | EQUIPMENT TAG: A |
| GB42 | GRAB BAR, 42" | EQUIPMENT TAG: B |
| MB | MARKER BOARD | |
| MIR | MIRROR, GLASS | EQUIPMENT TAG: E / F / L |
| MR | MOOR RACK | EQUIPMENT TAG: M |
| PIK | PLUMBING INSULATION KIT | |
| RH | DOUBLE ROBE HOOK | EQUIPMENT TAG: G |
| PTD | PAPER TOWEL DISPENSER | EQUIPMENT TAG: P |
| BCS | BABY CHANGING STATION | EQUIPMENT TAG: H |
| SD | SOAP DISPENSER | EQUIPMENT TAG: Q |
| SND | SANITARY NAPKIN DISPOSAL | EQUIPMENT TAG: D |
| SSS | STAINLESS STEEL SHELF | EQUIPMENT TAG: N |
| TB | TACK BOARD | EQUIPMENT TAG: H |
| TTD | TOILET TISSUE DISPENSER | EQUIPMENT TAG: C |
| SHW | SHOWER CURTAIN, ROD, AND HOOKS | EQUIPMENT TAG: J |

GENERAL NOTES

- THESE ARE TYPICAL DIAGRAMS INTENDED TO SHOW MOUNTING HEIGHTS, DIMENSIONS, SPATIAL REQUIREMENTS, ETC. FOR BOTH ACCESSIBLE AND NON-ACCESSIBLE FIXTURES AND ACCESSORIES.
- COMPLY WITH THE MOUNTING HEIGHTS SHOWN ON THESE DIAGRAMS UNLESS SPECIFICALLY DIMENSIONED ELSEWHERE ON THESE DRAWINGS.
- ALL DIMENSIONS ARE FROM FINISH MATERIAL.
- REFER TO SPECIFICATIONS FOR BASIS OF DESIGN. EQUIPMENT TAG IN ENLARGED PLANS AND INTERIOR ELEVATIONS REFER TO TOILET ACCESSORIES SCHEDULE IN SPECIFICATIONS.

| | | |
|-------------|-------------|---------|
| PROJECT NO. | 01088R21003 | |
| DATE | 11/23/2021 | |
| SCALE | AS NOTED | |
| DESIGNED | DRAWN | CHECKED |
| MH | SS | MH |

| | | |
|-----|-------------------------|----------|
| 0 | ISSUED FOR CONSTRUCTION | 11-24-21 |
| NO. | REVISION | DATE |
| | | |