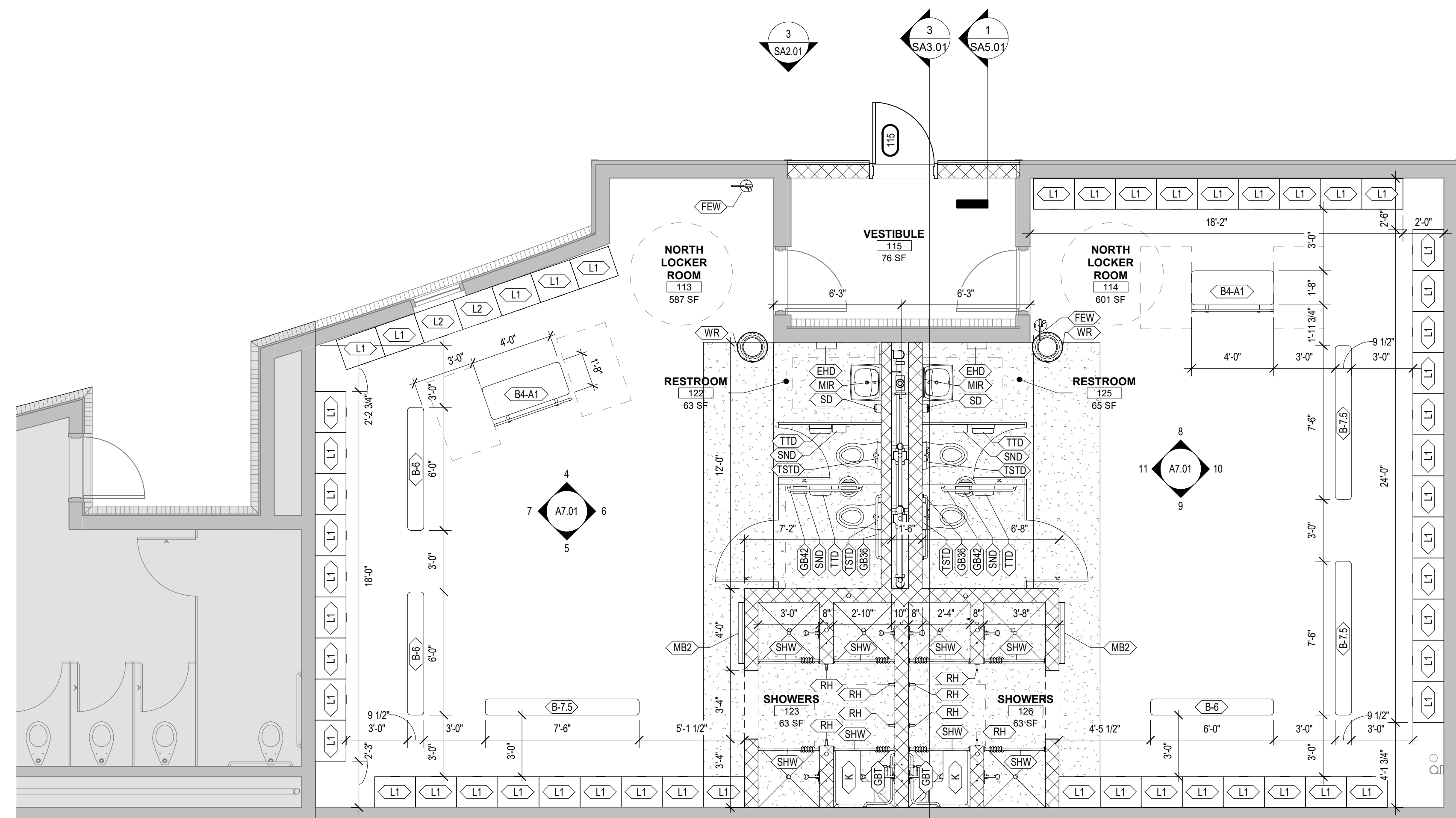


**A NORTH LOCKER - REFLECTED CEILING PLAN**  
1/4" = 1'-0"



**B NORTH LOCKER ROOM FLOOR PLAN**  
1/4" = 1'-0"

NORTH LOCKER RCP KEYNOTES	
KEYNOTE NUMBER	DESCRIPTION
1	EXISTING STRUCTURE TO REMAIN; REPAINT AS REQUIRED
2	NEW DUCTWORK & PIPING - REF MECH & PLUMBING
3	EXISTING DUCTWORK & PIPING TO REMAIN - REF MECH & PLUMBING
4	NEW ELECTRICAL LIGHT FIXTURE OR DEVICE - REF ELEC
5	EXISTING ELECTRICAL LIGHT FIXTURE OR DEVICE TO REMAIN - REF ELEC

CEILING LEGEND		(REF ELEC & MECH FOR ALL FIXTURE TYPES)	
	GYPSUM BOARD CEILING/SOFFT		EXIT SIGN - REF ELEC
	2' X 2' ACOUSTICAL CEILING PANELS AND SUSPENDED CEILING GRID		SUPPLY DIFFUSER - REF MECH
	EXPOSED TO STRUCTURE (UNO)		RETURN GRILLE - REF MECH
	PENDANT LINEAR LIGHT FIXTURE - REF ELEC		SPEAKER SYSTEM - REF ELEC
	2'X2' LIGHT FIXTURE - REF ELEC		OCCUPANCY SENSOR - REF ELEC
	2'X4' LIGHT FIXTURE - REF ELEC		ROLLER SHADES - REF FINISH CODES AND SPECS
	RECESSED CAN LIGHT - REF ELEC		ACOUSTIC CEILING BAFFLE
	RECESSED TROFFER - REF ELEC		

- GENERAL NOTES**
- ARCHITECTURAL CEILING PLANS ARE INTENDED TO SHOW FIXTURE LOCATIONS IN CEILING GRID AND CEILINGS. REFERENCE ELECTRICAL AND MECHANICAL DRAWINGS FOR FINAL FIXTURE LOCATIONS, QUANTITIES AND REQUIREMENTS.
  - SEE ROOM FINISH SCHEDULE SHEET 1401 FOR CEILING TYPES AND MATERIALS IN EACH ROOM/AREA.
  - PERIMETER TRACK FOR ALL ACOUSTICAL CEILING GRIDS SHALL BE INSTALLED IN ACCORDANCE WITH IBC AND CSCA GUIDELINES.
  - ALL DIMENSIONS ARE FROM FACE OF FINISH MATERIAL.
  - CEILING GRIDS/TILES TO BE CENTERED IN ALL ROOMS UNLESS NOTED OTHERWISE. PARTIAL TILES AT ROOM PERIMETERS SHALL NOT BE LESS THAN 6" IN EITHER DIMENSION.
  - CEILING HEIGHTS SHOWN ON THE REFLECTED CEILING PLANS ARE NON-TYPICAL AND SPECIFIC TO THE AREA INDICATED. SEE INTERIOR ELEVATIONS FOR SOFFIT HEIGHTS ABOVE CASEWORK, U.N.O.
  - SEE ELECTRICAL AND FIRE PROTECTION DRAWINGS FOR SPECIAL SYSTEMS, SMOKE DETECTORS, LIGHTING, AND WALL MOUNTED FIXTURES NOT SHOWN ON THIS SHEET. COORDINATE LOCATIONS OF ALL FIXTURES NOT INDICATED WITH CEILING LAYOUT SHOWN ON THIS SHEET.
  - LIGHT FIXTURES, HVAC DIFFUSERS, AND SPECIAL SYSTEMS ARE SHOWN FOR POSITIONING WITHIN FINISH CEILING LAYOUT. COORDINATE WITH ELECTRICAL, MECHANICAL, AND SPECIAL SYSTEMS DRAWINGS FOR FIXTURE TYPES, LOCATIONS, SIZES, AND SCHEDULES.
  - SEE MECHANICAL AND ELECTRICAL DRAWINGS FOR MOUNTING LOCATIONS OF ITEMS WHERE NO CEILING IS INDICATED.
  - CENTER LIGHTS, DIFFUSERS, EXIT SIGNS, SMOKE DETECTORS, SPEAKERS, GENERAL ALARM, AND MISC DEVICES IN CEILING TILES WHERE THEY ARE LOCATED, U.N.O.
  - INSTALL ACCESS PANELS IN GYP BD CEILINGS AT DUCT DAMPER CONTROLS, DUCT MOUNTED SMOKE DETECTORS, MANUAL DUCT CONTROLS, ETC.
  - LIGHT FIXTURES LOCATED AT STAIRS SHALL OCCUR AT EACH FLOOR AND INTERMEDIATE LANDINGS- REF. ELEC.
  - LOCATE SPRINKLER HEADS IN THE CENTER ZONE OF THE CEILING TILE. ALIGN CORRIDOR SPRINKLER HEADS IN THE SAME LINE PARALLEL TO THE WALL WITHIN EACH SPECIFIC CEILING CONSTRUCTION - REF. FIRE PROTECTION.
  - PROVIDE MANUAL ROLLER SHADES AT ALL EXTERIOR WINDOWS WITH THE EXCEPTION OF STAIR TOWERS 150, 151 AND MAIN ENTRY VESTIBULE 100.
  - PROVIDE MOTORIZED ROLLER SHADES IN STUDY HALL 102 AND LOBBY 101.

- CEILING PLAN KEY NOTES**
- ALIGN EDGE OF GYP. ON SOFFIT WITH ADJACENT EDGE OF GYP. ON WALL.
  - NEW GYP BD SOFFIT TO ALIGN WITH TOP OF FRAME OF NEW DOOR. REF. FINISH SCHEDULE FOR FINISHES.
  - EXISTING PERIMETER SOFFIT TO REMAIN - REF. FINISH SCHEDULE FOR UPDATED FINISHES.
  - RECESS MANUAL ROLLER SHADES WITHIN EXISTING SOFFIT
  - RECESS MANUAL ROLLER SHADES WITHIN NEW ACOUSTIC CEILING. ALIGN BOTTOM OF HOUSING WITH CEILING TILE.
  - EXISTING TO REMAIN
  - ALIGN FACE OF STUD TO FACE OF COLUMN
  - REMOVE PORTION OF EXISTING GYP BD SOFFIT. PROVIDE NEW 5/8" TYPE 'X' GYP BD TO COMPLETE EXISTING PERIMETER SOFFIT WHICH IS SCHEDULED TO REMAIN AND PREPARE TO RECEIVE NEW FINISHES.
  - REWORK EXISTING ACOUSTICAL CEILING TILE TO ACCOMMODATE NEW OFFICE LAYOUT.
  - DEMO PORTION OF EXISTING VERTICAL SOFFIT WALL TO ALLOW FOR EXTENSION OF NEW SOFFIT TO COVER THE STRUCTURAL KICKERS. FIELD VERIFY EXTENSION DIMENSION. ADJUST LIGHT FIXTURES AS REQUIRED.
- NOT IN SCOPE OF WORK

**NORTH LOCKER ROOM EQUIPMENT SCHEDULE**

MARK	DESCRIPTION	QTY	MANUF/MODEL	SUPPLIED BY	INSTALL D BY	COMMENTS
B4-A1	4" W 20" DEEP ADA BENCH W/BACK REST	2				
B-6	HEAVY DUTY PEDESTAL BENCH	3				
B-7.5	HEAVY DUTY PEDESTAL BENCH	3				
EHD	WARM AIR HAND DRYER	2	BRADLEY MODEL 2923-287400 TO MATCH EXISTING	G.C., EXIST	G.C.	SALVAGED AND NEW; BRUSHED STAINLESS STEEL
FEW	WALL MOUNTED FIRE EXTINGUISHER	2	4A-80B-C, 5 LBS	EXISTING	G.C.	SALVAGED
GB38	36" ADA GRAB BAR	2	BOBRICK B-6806 X 36" OR EQUAL	EXISTING	G.C.	SALVAGED
GB42	42" ADA GRAB BAR	2	BOBRICK B-6806 X 42" OR EQUAL	EXISTING	G.C.	SALVAGED
GBT	ADA SHOWER TWO WALL GRAB BAR	2	BOBRICK B-6861 OR EQUAL	G.C.	G.C.	STAINLESS STEEL W/SATIN PEENED GRIP
K	ADA SHOWER SEAT	2	BOBRICK B-5161 OR EQUAL	G.C.	G.C.	COLOR TROPY METAL TYPE 304 STAINLESS STEEL
L1	TWO TIER LOCKER	52	REPUBLIC STORAGE SOLUTIONS 24" W X 78" H X 18" D DOUBLE TIER LOCKER	G.C.	G.C.	SLOPED TOP
L2	TWO TIER LOCKER	2	REPUBLIC STORAGE SOLUTIONS 24" W X 78" H X 18" D DOUBLE TIER LOCKER	G.C.	G.C.	FLAT TOP
MB2	36" W X 48" H WHITEBOARD	2	BRADLEY SERIES 780, CONCEALED MOUNTING, TEMPERED GLASS MIRROR 18" W X 30" H	G.C., EXIST	G.C.	SATIN FINISH STAINLESS STEEL ANGLE FRAME
RH	ROBE HOOK	8	BOBRICK B-212 HOOK WITH BUMPER OR EQUAL	G.C.	G.C.	SATIN ALUMINUM CASTING
SD	SOAP DISPENSER	2	GOJO SURFACE MOUNTED 800 SERIES BAG IN A BOX DISPENSER	G.C., EXIST	G.C.	BLACK
SHW	36" SHOWER CURTAIN ROD	8	BOBRICK B-207X36 OR EQUAL	G.C.	G.C.	TYPE 304 STAINLESS STEEL W/ SATIN FINISH
SND	SANITARY NAPKIN DISPOSAL	4	BRADLEY 4781-11 OR EQUAL	G.C., EXIST	G.C.	SALVAGED AND NEW TO MATCH EXISTING; STAINLESS STEEL
TPAR	TOILET PARTITIONS RE-FINISH SCHEDULE	4		G.C., EXIST	G.C.	SALVAGED AND NEW TO MATCH EXISTING; STAINLESS STEEL
TSTD	SEAT COVER DISPENSER	4	BRADLEY MODEL 583; 500 CAPACITY OR EQUAL	G.C., EXIST	G.C.	SALVAGED AND NEW TO MATCH EXISTING; STAINLESS STEEL
TTD	TOILET TISSUE DISPENSER	4	GEORGIA PACIFIC 592-06, TWO ROLL, SIDE BY SIDE OR EQUAL	G.C., EXIST	G.C.	TRANSLUCENT SMOKE
WR	TRASH CAN W/ LID OR EQUAL	2	SIMPLE HUMAN 80L BULLET TRASH CAN WITH LID OR EQUAL	G.C.	G.C.	



©2021 MKEC Engineering All Rights Reserved. www.mkec.com  
These drawings and their contents, including, but not limited to, all concepts, designs, & data are the exclusive property of MKEC Engineering (MKEC), and may not be used or reproduced in any way without the express consent of MKEC.

**NORTH LOCKER ROOM RCP & EQUIPMENT PLAN**

PROJECT NO.	01088R21003
DATE	11/23/2021
SCALE	AS NOTED
DESIGNED	SS
DRAWN	SS
CHECKED	MH

0	ISSUED FOR CONSTRUCTION	11-24-21
NO.	REVISION	DATE

SHEET NO. SA1.04



11/24/2021 9:32:15 AM  
B:\100\01088R21003\_StrykerRemodel\01088R21003\_A\_Stryker\_Arch\01088R21003\_V01.rvt