

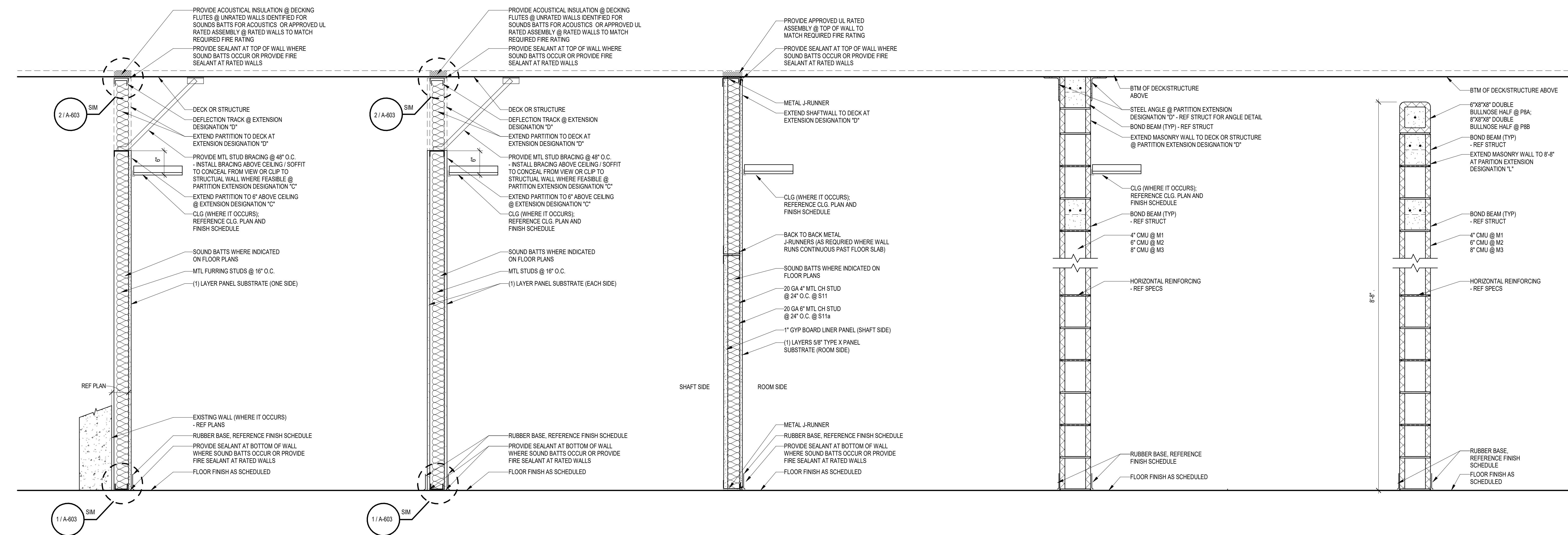


©2021 MKEC Engineering All Rights Reserved  
www.mkec.com  
These drawings and their contents, including, but not limited to, all concepts, designs, & data are the exclusive property of MKEC Engineering (MKEC), and may not be used or reproduced in any way without the express consent of MKEC.

**PARTITION SCHEDULE**

PROJECT NO.	01088R21003	
DATE	11/23/2021	
SCALE	AS NOTED	
DESIGNED	DRAWN	CHECKED
MH	SS	MH
ISSUED FOR CONSTRUCTION	11-24-21	
NO.	REVISION	DATE

SHEET NO. A6.04

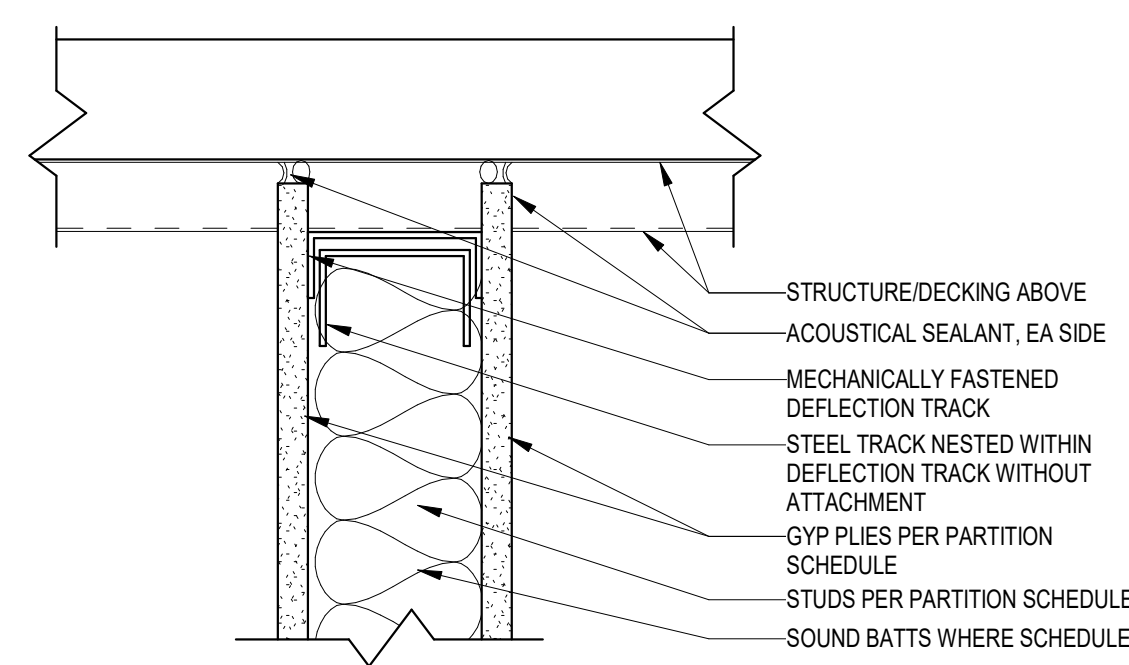


- S1 1 5/8" FURRING STUD (25 GA.) @ 16" O.C., BRACED, 5/8" SUBSTRATE PANEL ONE SIDE (REF. ROOM FINISH SCHED., SHT. A6.01 FOR SUBSTRATE MATERIAL)
- S2 2 1/2" FURRING STUD (25 GA.) @ 16" O.C., BRACED, 5/8" SUBSTRATE PANEL ONE SIDE (REF. ROOM FINISH SCHED., SHT. A6.01 FOR SUBSTRATE MATERIAL)
- S3 3-5/8" FURRING STUD (25 GA.) @ 16" O.C., BRACED, 5/8" SUBSTRATE PANEL ONE SIDE (REF. ROOM FINISH SCHED., SHT. A6.01 FOR SUBSTRATE MATERIAL)
- S4 6" FURRING STUD (25 GA.) @ 16" O.C., UNBRACED, 5/8" SUBSTRATE PANEL ONE SIDE (REF. ROOM FINISH SCHED., SHT. A6.01 FOR SUBSTRATE MATERIAL)
- S5 8" FURRING STUD (25 GA.) @ 16" O.C., UNBRACED, 5/8" SUBSTRATE PANEL ONE SIDE (REF. ROOM FINISH SCHED., SHT. A6.01 FOR SUBSTRATE MATERIAL)
- S6 2" ZEE FURRING (25 GA.) @ 24" O.C., UNBRACED, 5/8" SUBSTRATE PANEL ONE SIDE (REF. ROOM FINISH SCHED., SHT. A6.01 FOR SUBSTRATE MATERIAL)
- S7 3-5/8" STUDS (25 GA.) @ 16" O.C., UNBRACED, 5/8" SUBSTRATE PANEL BOTH SIDES (REF. ROOM FINISH SCHED., SHT. A6.01 FOR SUBSTRATE MATERIAL)
- S8 4" STUDS (25 GA.) @ 16" O.C., UNBRACED, 5/8" SUBSTRATE PANEL BOTH SIDES (REF. ROOM FINISH SCHED., SHT. A6.01 FOR SUBSTRATE MATERIAL)
- S9 6" STUDS (25 GA.) @ 16" O.C., UNBRACED, 5/8" SUBSTRATE PANEL BOTH SIDES (REF. ROOM FINISH SCHED., SHT. A6.01 FOR SUBSTRATE MATERIAL)
- S10 8" STUDS (25 GA.) @ 16" O.C., UNBRACED, 5/8" SUBSTRATE PANEL BOTH SIDES (REF. ROOM FINISH SCHED., SHT. A6.01 FOR SUBSTRATE MATERIAL)
- S11 1-HOUR FIRE-RATED 4" SHAFTWALL (20 GA.) @ 24" O.C., UNBRACED, 5/8" SUBSTRATE PANEL ONE SIDE AND 1" LINER PANEL (REF. ROOM FINISH SCHED., SHT. A6.01 FOR SUBSTRATE MATERIALS)
- S11a 1-HOUR FIRE-RATED 8" SHAFTWALL (20 GA.) @ 24" O.C., UNBRACED, 5/8" SUBSTRATE PANEL ONE SIDE AND 1" LINER PANEL (REF. ROOM FINISH SCHED., SHT. A6.01 FOR SUBSTRATE MATERIALS)
- M1D 4" CMU (M1 W/ EXTENSION DESIGNATION "D")
- M2D 6" CMU (M2 W/ EXTENSION DESIGNATION "D")
- M3D 8" CMU (M3 W/ EXTENSION DESIGNATION "D")
- M1L 4" CMU (M1 W/ EXTENSION DESIGNATION "L")
- M2L 6" CMU (M2 W/ EXTENSION DESIGNATION "L")
- M3L 8" CMU (M3 W/ EXTENSION DESIGNATION "L")

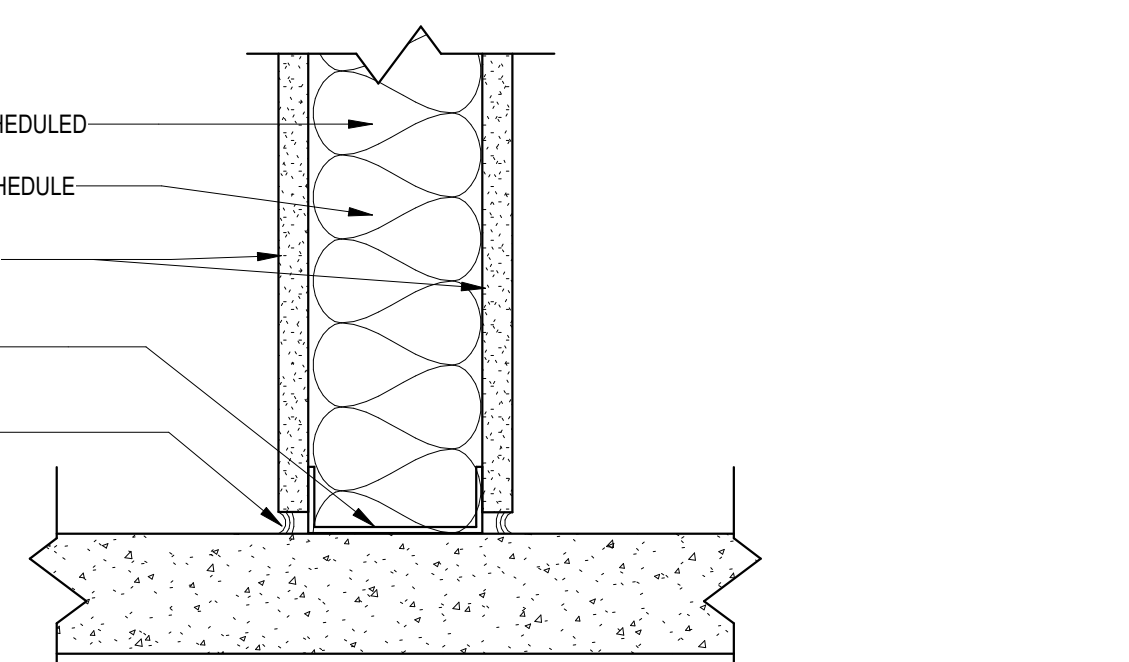
**UNBRACED LENGTH / LIMITING HEIGHT FOR INTERIOR STUD FRAMING - 1 HOUR FIRE-RATED AND NON-RATED PARTITIONS - ALLOWABLE DEFLECTION: L / 240 at 5 PSF**

STUD SIZE	STUD SPACING	LIMITING HEIGHT: 25 GAUGE STUD	LIMITING HEIGHT: 20 GAUGE STUD
1 5/8"	16"	8'-4"	9'-6"
2 1/2"	16"	11'-3"	12'-10"
3 5/8"	16"	14'-4"	16'-5"
6"	16"	19'-9"	24'-6"
4" SHAFTWALL	24"	N/A	17'-6"

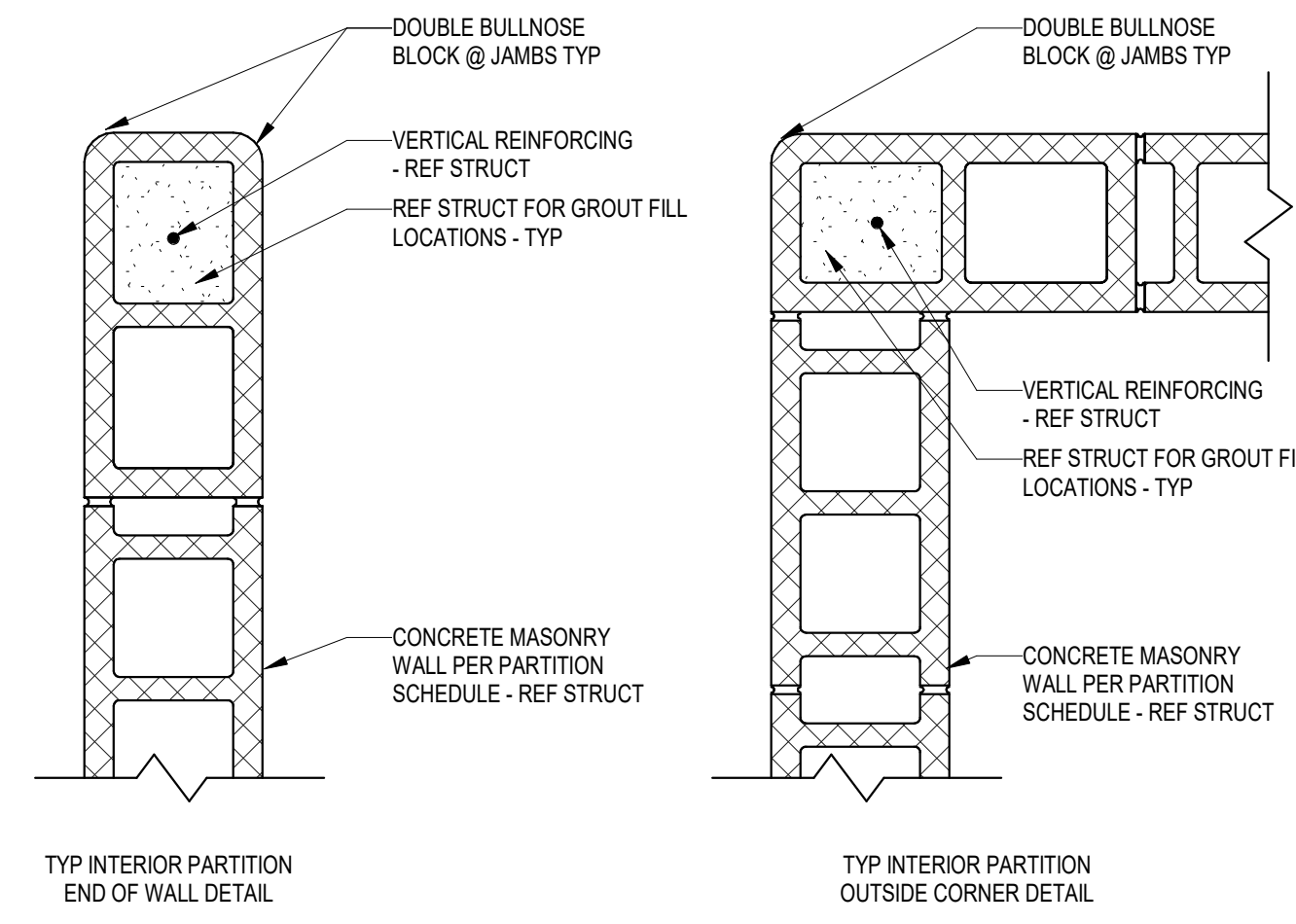
- PARTITION NOTES**
- STUD SPACINGS SHALL BE 16" O.C. UNLESS NOTED OTHERWISE.
  - REFER TO UNBRACED LENGTH/LIMITING HEIGHT CHARTS FOR STUD GAUGE REQUIREMENTS. REFER TO SPECIFICATIONS FOR ADDITIONAL REQUIREMENTS FOR USE OF HEAVIER LIGHT GAUGE METAL FRAMING IN LIEU OF THOSE SHOWN.
  - GENERAL CONTRACTOR SHALL SUPPLY AND COORDINATE INSTALLATION OF BLOCKING IN ALL INTERIOR PARTITIONS.
  - REFERENCE ENLARGED INTERIOR ELEVATIONS FOR ADDITIONAL WALL FINISH INFORMATION.
  - REFERENCE ROOM FINISH SCHEDULE, SHEET A-601, FOR WALL SUBSTRATE INFORMATION.
  - PARTITION DEFLECTION SHALL BE LIMITED TO L/240 AT 5 PSF HORIZONTAL LOAD.
  - PARTITION BRACINGS SHALL OCCUR ONLY IN SPACES WITH CEILINGS OR SOFFITS IN WHICH THE BRACING SHALL BE CONCEALED FROM VIEW.
- STUD GAUGE NOTES**
- USE CHART BELOW TO DETERMINE THE REQUIRED STUD GAUGE FOR THE VARIOUS PARTITION TYPES.
  - REFER TO STRUCTURAL DRAWINGS / SPECIFICATIONS FOR STRUCTURAL STUD FRAMING REQUIREMENTS AT EXTERIOR WALLS.
  - AT GENERAL CONTRACTORS OPTION, STUD GAUGES MAY BE ENGINEERED BY A REGISTERED PROFESSIONAL IN THE STATE OF THIS PROJECT.
  - ABOVE CEILING BRACING (AT NOT MORE THAN 4'-0" O.C.) IS PERMITTED FOR NON-FIRE RATED PARTITIONS TO HELP REDUCE THE UNBRACED LENGTH OF PARTITION. PROVIDE HORIZONTAL STUD STRONGBACK.



**2 TYP T.O. WALL DETAIL**  
3" = 1'-0"



**1 TYP B.O. WALL DETAIL**  
3" = 1'-0"



**3 TYP INTERIOR BULLNOSE CMU DETAILS**  
1 1/2" = 1'-0"

**PARTITION TYPE KEY**

**PARTITION MATERIAL**  
C = CONCRETE  
F = INSULATED CONCRETE FORM  
M = MASONRY  
P = MIXED CONSTRUCTION MATERIALS  
S = METAL STUD  
W = WOOD STUD

**PARTITION TYPE NUMBER**

**EXAMPLE PARTITION TYPE TAG**  
S1aD1

**FIRE RATING**  
O = NO SMOKE/FIRE RATING REQUIREMENTS  
V = SMOKE RATED  
1 = 1 HOUR FIRE RATED  
X = 1 HOUR FIRE & SMOKE RATED  
2 = 2 HOUR FIRE RATED  
Z = 2 HOUR FIRE & SMOKE RATED

**EXTENSION DESIGNATION**  
C = EXTEND PARTITION 6" ABOVE CEILING  
D = EXTEND PARTITION TO DECK/FLOOR SLAB  
L = LOW WALL - REF PARTITION TYPE FOR PARTITION HEIGHT  
N = INFILL PARTITION IN EXISTING OPENING

**NOTE:**  
1. NOT ALL COMBINATIONS OF PARTITION TYPES SHOWN ARE UTILIZED IN THIS PROJECT.  
2. PARTITION TYPE "P" WITH MIXED CONSTRUCTION MATERIALS WILL NOT HAVE MATERIAL THICKNESS DESIGNATIONS.